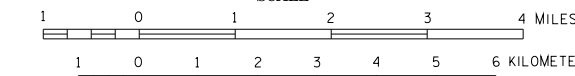


# GENERAL HIGHWAY MAP SHERBURNE COUNTY MINNESOTA

PREPARED BY THE  
MINNESOTA DEPARTMENT OF TRANSPORTATION  
OFFICE OF TRANSPORTATION DATA & ANALYSIS  
IN COOPERATION WITH  
U.S. DEPARTMENT OF TRANSPORTATION  
FEDERAL HIGHWAY ADMINISTRATION

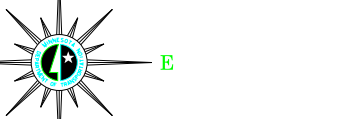
SCALE



2011

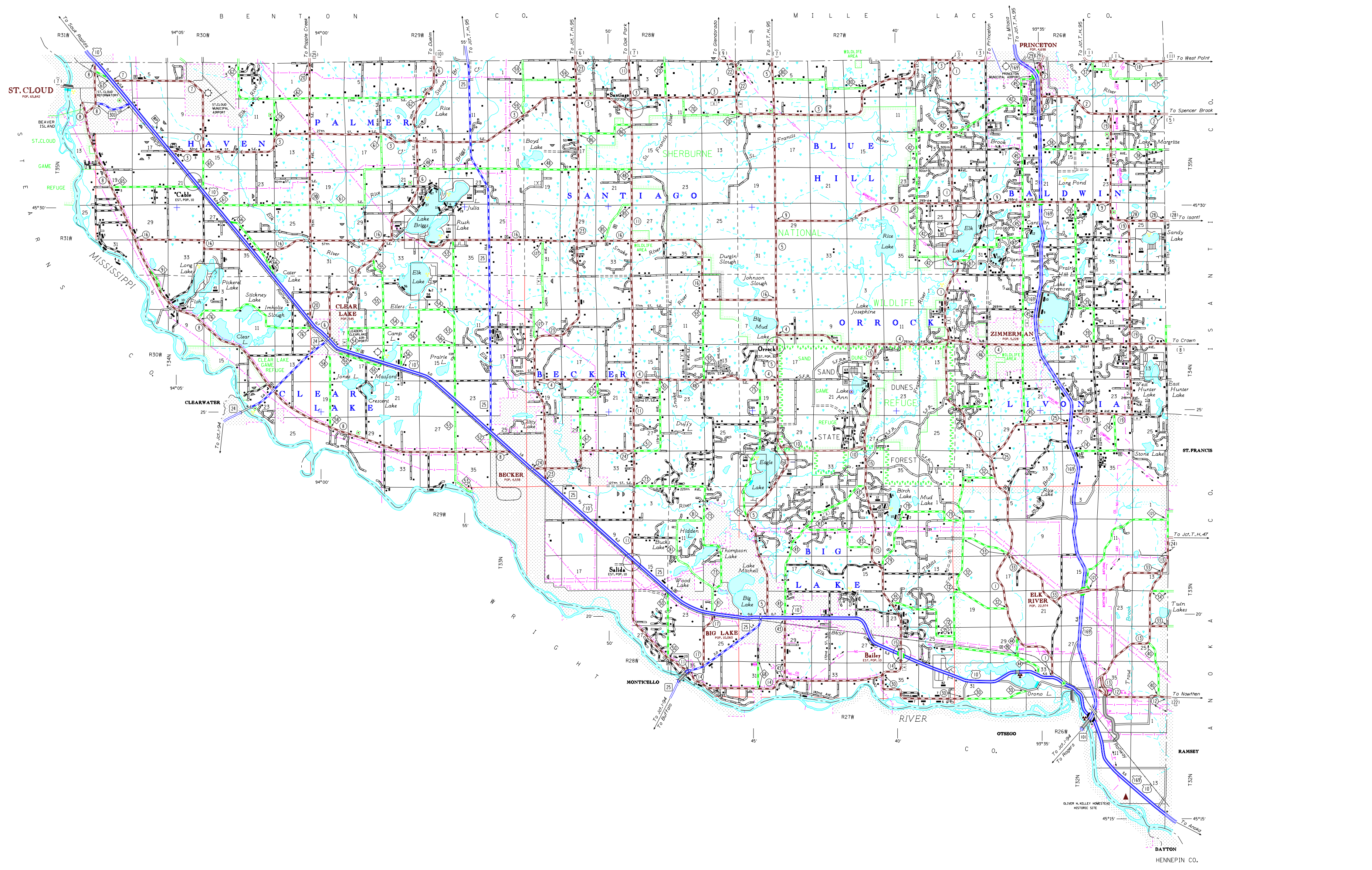
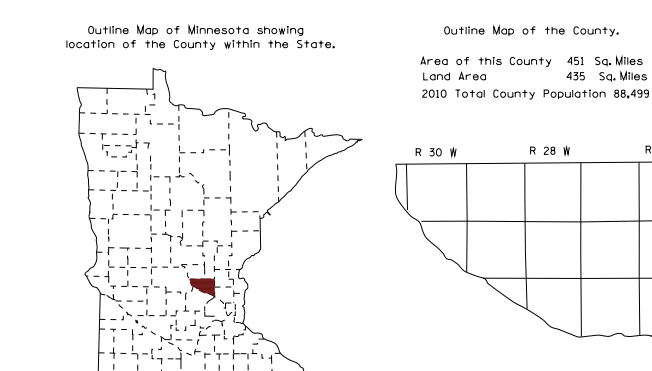
BASIC DATA - 1977\*

Projections  
Minnesota Coordinate System  
Central Zone  
Lambert Conformal Conic



## LEGEND

- |   |                               |
|---|-------------------------------|
| <b>ROAD AND ROADWAY FEATURES</b>  | <b>NAVIGATION</b>             |
| PROJECTED ROAD  | RAIL LINES ON NATURAL STREAMS |
| UNIMPAVED ROAD  | SHIP LINES ON INLAND LAKES    |
| GRAVEL AND GRAVEL ROAD  | DOCK PIER OR LANDING          |
| SOIL SURFACE ROAD   | NAVIGABLE STREAM              |
| GRAVEL OR STONE ROAD  | LOCKWATER LIGHT BEACON        |
| BITUMEN ROAD  | LOCKWATER LIGHT               |
| PAVED ROAD  | LIGHTHOUSE                    |
| DECEASED ROAD   |                               |
| ROAD UNDER CONSTRUCTION   |                               |
| ROADS IN UNINCORPORATED PLACES NOT FULLY WITHIN MUNICIPALITIES AND PREVIOUS EDITIONS                              |                               |
| POINTS BETWEEN WHICH DISTANCES ARE INDICATED  |                               |
| GRADE SEPARATION  |                               |
| FULL TRAFFIC INTERCHANGE  |                               |
| PARTIAL TRAFFIC INTERCHANGES INDICATING TRAFFIC MOVEMENT  |                               |
| <b>ROAD SYSTEM DESIGNATIONS</b>   |                               |
| INTERSTATE TRUNK HIGHWAY  |                               |
| UNNUMBERED TRUNK HIGHWAY  |                               |
| STATE NUMBERED TRUNK HIGHWAY  |                               |
| COUNTY STATE AID HIGHWAY  |                               |
| COUNTY STATE AID IN ADJUTING COUNTY   |                               |
| TERMINATION OF DESIGNATED ROUTE   |                               |
| INTERSTATE EXIT   |                               |
| GREAT RIVER ROAD  |                               |
| FEDERAL AID INTERSTATE SYSTEM   |                               |
| NATIONAL FOREST HIGHWAY   |                               |
| NATIONAL FOREST DEVELOPMENT   |                               |
| INDIAN SERVICE ROAD   |                               |
| STATE STREET ROAD   |                               |
| STATE PARK ROAD   |                               |
| RAILROADS   |                               |
| RAILROADS RUN NUMBER OF TRACKS BY A SINGLE OPERATING COMPANY OR BY TRAINS OF ANOTHER COMPANY UNDER THROUGH RIGHTS |                               |
| RAILROADS IN ADJUTATION BY TWO OR MORE TRACKS OF SEPARATELY OPERATED COMPANIES                                    |                               |
| RAILROAD STATION  |                               |
| GRADE CROSSING  |                               |
| OVERPASS HIGHWAY BELOW  |                               |
| OVERPASS HIGHWAY ABOVE  |                               |
| <b>ARWAYS</b>   |                               |
| MILITARY FIELD  |                               |
| COMMERCIAL OR MANAGERIAL FIELD  |                               |
| COMPLETE FACILITIES   |                               |
| LANDING AREA OR STRIP   |                               |
| SEAPLANE BASE   |                               |
| AIRWAY LIGHT BEACON-GENERAL   |                               |
| RADIO RANGE STATION   |                               |
| <b>STRUCTURES</b>   |                               |
| General of Symbols lower 20' spans  |                               |
| HOBBY BRIDGE  |                               |
| SMALL BRIDGES CLOSELY SPACED  |                               |
| OVERPASS  |                               |
| General of Symbols 100' span and over   |                               |
| GENERAL   |                               |
| DIAPHRAGM   |                               |
| ARCH  |                               |
| TRUSS   |                               |
| THE ABOVE FALL IS KEYS BEING APPLICABLE   |                               |
| Other Structures  |                               |
| RECTANGULAR BRIDGE  |                               |
| DAW WITH ROAD LARGE SCALE   |                               |
| DAW WITH ROAD SMALL SCALE   |                               |
| DAW WITHOUT ROAD LARGE SCALE  |                               |
| DAW WITHOUT ROAD SMALL SCALE  |                               |
| LEVEL ON ONE  |                               |
| LEVEL ON ONE WITH ROAD  |                               |
| WOOD STRUCTURES 10 TO 20' SPAN  |                               |
| CONCRETE FORD OR DIP  |                               |
| FORD - ROAD ESTABLISHED   |                               |
| <b>BOUNDARIES</b>   |                               |
| NATIONAL OR STATE   |                               |
| COUNTY  |                               |
| CITY TOWNSHIP   |                               |
| CONGRESSIONAL TOWNSHIP ALL-LAND   |                               |
| CORPORATE LINE  |                               |
| SECTION LINE  |                               |
| CONGESTED AREA  |                               |
| NATIONAL OR STATE PARK  |                               |
| NATIONAL OR STATE FOREST  |                               |
| INDIAN RESERVATION  |                               |
| GAME REFUGE   |                               |
| ADJUTY  |                               |
| WILDLIFE MANAGEMENT AREA STATUS ON  |                               |
| WILDLIFE AREA FEDERAL   |                               |
| MATCH LINE BETWEEN ADJOINING SHEETS OF THE SAME COUNTY  |                               |
| <b>DRAINAGE</b>   |                               |
| INTERMITTENT STREAM   |                               |
| MINOR STREAM  |                               |
| WIDE STREAM   |                               |
| WASH OR BRAMP LAND  |                               |
| DRAINAGE STATION  |                               |
| LAKE OR POND  |                               |
| <b>CONSERVATION</b>   |                               |
| FOREST RANGER STATION   |                               |
| GUARD OR WARDEN STATION   |                               |
| NOT PERMANENTLY OCCUPIED  |                               |
| POWDER MILL   |                               |
| GAME PRESERVE   |                               |
| SEPARATION OF LANDS UNDER FEDERAL PROMOTION ELEVATION   |                               |
| WALL PANE OF STATE OR COUNTY  |                               |
| MANICIPAL, STATE, OR FEDERAL  |                               |
| PUBLIC ACCESS POINT   |                               |
| <b>RECREATION</b>   |                               |
| GOLF COURSE OR COUNTRY CLUB   |                               |
| SKI CLUB  |                               |
| ATHLETIC FIELD  |                               |
| RECREATION PARK   |                               |
| PLATONIC BALLFIELD  |                               |
| BATHING BEACH OR SWIMMING POOL  |                               |
| SCENE SITE  |                               |
| CAMP OR LODGE   |                               |
| <b>FARM AND DWELLING UNITS</b>  |                               |
| FARM UNIT   |                               |
| SMALLER THAN FARM   |                               |
| BARNYARD OR DONATIONS FOR STUDENTS  |                               |
| BARNYARD, BARN, ETC.  |                               |
| SEASONAL DWELLING   |                               |
| NUMBER OF GROUPS DWELLING CLOSELY SPACED  |                               |
| NUMBER OF GROUPS DWELLING CLOSELY SPACED  |                               |
| INDICATED NUMBER OF EACH UNIT   |                               |
| LOT AND NUMBER USED TO INDICATE LOCATION OF ANY CULTURAL FEATURE  |                               |
| SHOW OUT OF POSITION  |                               |
| <b>INDUSTRIAL</b>   |                               |
| FACTORY OR INDUSTRIAL PLANT   |                               |
| WHEEL   |                               |
| STORAGE TANKS, OIL, OR GAS  |                               |
| STEEL MILL  |                               |
| MEET DAMP   |                               |
| STOCKYARD/FEEDLOT   |                               |
| QUARRY, CEMENTARY OR CHEESE FACTORY   |                               |
| WAREHOUSE   |                               |
| <b>COMMERCIAL</b>   |                               |
| STORE OR SMALL BUSINESS ESTABLISHMENT   |                               |
| HOTEL   |                               |
| TOURIST COURT   |                               |
| RESTAURANT  |                               |
| BARBER  |                               |
| BREWERY   |                               |
| <b>PUBLIC SERVICE FACILITIES</b>  |                               |
| POST OFFICE   |                               |
| FIRE STATION  |                               |
| MUSEUM  |                               |
| PUBLIC LIBRARY  |                               |
| LODGE   |                               |
| ALL-ROUNDER POINT OF ENTRY  |                               |
| RADIO STATION   |                               |
| GENERIC SCHOOL PLANT  |                               |
| NURSING HOME  |                               |
| HOSPITAL  |                               |
| TOWN HALL   |                               |
| CONVENTIONAL INSTITUTION  |                               |
| <b>CITY CENTERS</b>   |                               |
| STATE CAPITAL   |                               |
| COUNTY SEAT   |                               |
| CITY CENTER   |                               |
| UNINCORPORATED CITY - GENERALIZED   |                               |
| UNINCORPORATED CITY - GENERALIZED   |                               |
| <b>MISCELLANEOUS MAP FEATURES</b>   |                               |
| CHAPEL, OTHER RELIGIOUS INSTITUTIONS  |                               |
| CEMETERY  |                               |
| CHURCH WITH CEMETERY ADJACENT   |                               |
| PARSONAGE, RECTORY, CHURCH  |                               |
| MONUMENT - GRAVE  |                               |
| GRAVEL PIT  |                               |
| QUARRY  |                               |
| SCARP WITH JAW  |                               |
| SCARP WITH JAW  |                               |
| POWER GENERATOR   |                               |
| STATE PATROL STATION  |                               |
| DEPARTMENT OF TRANSPORTATION DISTRICT OFFICE  |                               |
| TOLL HOUSE, STATE POST OF ENTRY OR WEIR STATION   |                               |
| WATER HOUSE   |                               |
| NATURAL GAS PETROLEUM PRODUCTS  |                               |
| CRUDE OIL OR WATER  |                               |
| CRUDE OIL OR WATER  |                               |
| CRUDE OIL OR WATER  |                               |
| NATURAL GAS PETROLEUM PRODUCTS  |                               |
| PIPELINE, NATURAL GAS   |                               |
| PIPELINE, PETROLEUM PRODUCTS  |                               |
| PIPELINE, CRUDE OIL   |                               |
| TRANSMISSION LINE, OVER OR UNDER  |                               |
| POWER PLANT   |                               |
| TRANSFORMATION STATION  |                               |
| TOWNSHIP STATION  |                               |
| LONGITUDE AND LATITUDE INTERSECTION   |                               |
| OPEN TO THE PUBLIC  |                               |



\*NOTE: ALL FEATURES EXCEPT TOWNSHIP ROADS AND CULTURE ARE CURRENT AS OF JANUARY 1, 2011.  
NOTE: FOR DETAIL OF COUNTY STATE AID HIGHWAYS AND COUNTY ROADS IN INCORPORATED PLACES, SEE MAPS OF MUNICIPALITIES.