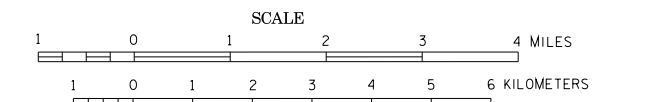


GENERAL HIGHWAY MAP KITTSON COUNTY MINNESOTA

PREPARED BY THE
MINNESOTA DEPARTMENT OF TRANSPORTATION
OFFICE OF TRANSPORTATION DATA & ANALYSIS
IN COOPERATION WITH
U.S. DEPARTMENT OF TRANSPORTATION
FEDERAL HIGHWAY ADMINISTRATION



2011
BASIC DATA - 1977*

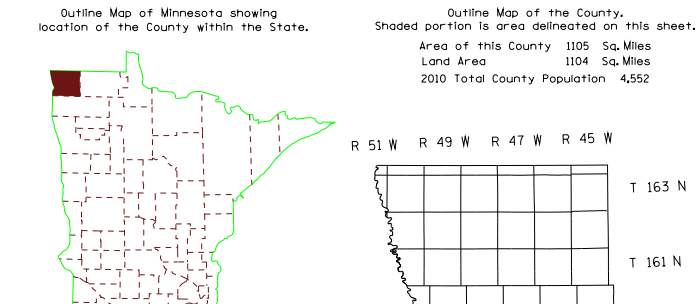
Projections:
Minnesota Coordinate System
North Zone
Lambert Conformal Conic

North American Datum
of 1983



LEGEND

- | | |
|--|--|
| ROAD AND ROADWAY FEATURES | NAVIGATION |
| PROJECTED ROAD | SHIP LINES ON INLAND STREAMS |
| UNIMPROVED ROAD | DOCK, PIER ON LANDING |
| GRAVEL AND GRADED ROAD | NAVIGABLE STREAM |
| SOIL SURFACE ROAD | LANDMARK LIGHT BEACON |
| GRAVEL OR STONE ROAD | LIGHTHOUSE |
| RETAINMENT ROAD | |
| PAVED ROAD | |
| ROAD UNDER CONSTRUCTION | |
| ROADS IN UNINCORPORATED PLACES | |
| EX-EMPTION OF LOCAL ROADS NOT CLASSIFIED BY MUNICIPALITIES AND | |
| INDIVIDUAL ROADS | |
| POINTS BETWEEN WHICH DISTANCES ARE MEASURED INDICATED THIS WAY | |
| GRADE SEPARATION | |
| FULL TRAFFIC INTERCHANGE | |
| PARTIAL TRAFFIC INTERCHANGE | |
| INDICATING TRAFFIC MOVEMENT | |
| | |
| ROAD SYSTEM DESIGNATIONS | CONSERVATION |
| INTERSTATE TRUNK HIGHWAY | FOREST RANGER STATION |
| UNNUMBERED TRUNK HIGHWAY | STATE OR FEDERAL STATION |
| STATE NUMBERED TRUNK HIGHWAY | NOT PERMANENTLY OCCUPIED |
| COUNTY STATE AID HIGHWAY | FISH HATCHERY |
| COUNTY ROAD | GAME PRESERVE |
| COUNTY STATE AID IN CONSTRUCTION | SEPARATION OF LANDS |
| TEMPORARY DESIGNATED ROUTE | PROMINENT ELEVATION |
| | MINIMUM POINT OF STATE OR COUNTY |
| | MP - MUNICIPAL, WP - WAYSIDE |
| | PUBLIC ACCESS POINT |
| | |
| RAILROADS | RECREATION |
| RELEASED ANY NUMBER OF TRACKS USED BY A SINGLE OPERATING COMPANY OR BY TRAINS OF ANOTHER CARRIER UNDER TRUCKS RIGHTS | GOLF COURSE OR COUNTRY CLUB |
| RAILROADS IN AUTHORITY OF TWO OR MORE TRACKS OF SEPARATELY OPERATED COMPANIES OR | ATHLETIC FIELD |
| ADJACENT RIGHTS OF WAY | RECREATION FARM |
| GRADE CROSSING | POND, SHED, PLAYGROUND, BALLFIELD, ETC. |
| OVERPASS HIGHWAY BELONGING TO STATE | BATHING BEACH OR SWIMMING POOL |
| OVERPASS HIGHWAY BELONGING TO PRIVATE | SCENE SITE |
| | CAMP OR LODGE |
| | |
| AIRWAYS | FARM AND DWELLING UNITS |
| MILITARY FIELD | FARM UNIT |
| COMMERCIAL OR MUNICIPAL FIELD | SMALLER THAN FARM |
| COMPLETE FACILITIES | BARRACKS OR QUARTERS FOR SOLDIERS |
| LANDING AREA OR STRIP | BORROW, WINDMILL, ETC. |
| SEAPLANE BASE | SEASONAL DWELLING |
| AIRWAY LIGHT BEACON, GENERAL | HOUSE OR GROUP OF BUILDINGS CLOSELY SPACED |
| RADIO WAVE STATION | NUMBER SUBJECT TO CHANGE |
| | INDICATE NUMBER OF STORES |
| | SHOW NAME AND LOCATION OF STORE |
| | LOCATION OF ANY CULTURAL FEATURE |
| | SHOW DATE OF POSITION |
| | |
| STRUCTURES | INDUSTRIAL |
| GENERAL SYMBOLS LOWER 20' SPAN | FACTORY OR INDUSTRIAL PLANT |
| GENERAL SYMBOLS 20' TO 29' SPAN | WAREHOUSE |
| GENERAL SYMBOLS 30' TO 39' SPAN | STORAGE TANKS, OIL OR GAS |
| GENERAL SYMBOLS 40' TO 49' SPAN | BEET SUMP |
| GENERAL | STOCK FEEDLOT |
| DRAINAGE | QUARTERS, CREAMERY OR CHEESE FACTORY |
| ARCH | WAREHOUSE |
| | |
| BOUNDARIES | COMMERCIAL |
| NATIONAL OR STATE | STORE OR SMALL BUSINESS ESTABLISHMENT |
| COUNTY | HOTEL |
| CONGRESSIONAL TERRITORY HULLAND | RESTAURANT |
| CORPORATE LINE | THEATER OR THEATRE |
| SECTION LINE | BURDEN |
| CONGRESSIONAL TERRITORY HULLAND | GREENHOUSE |
| CONGRESSIONAL TERRITORY HULLAND | |
| CONGRESSIONAL TERRITORY HULLAND | PUBLIC SERVICE FACILITIES |
| CONGRESSIONAL TERRITORY HULLAND | POST OFFICE |
| CONGRESSIONAL TERRITORY HULLAND | FIRE STATION |
| CONGRESSIONAL TERRITORY HULLAND | MUSEUM |
| CONGRESSIONAL TERRITORY HULLAND | PUBLIC LIBRARY |
| CONGRESSIONAL TERRITORY HULLAND | LONGER |
| CONGRESSIONAL TERRITORY HULLAND | LANDING POINT OF ENTRY |
| CONGRESSIONAL TERRITORY HULLAND | RAILROAD STATION |
| CONGRESSIONAL TERRITORY HULLAND | SEMI-CONDUCTOR PLANT |
| CONGRESSIONAL TERRITORY HULLAND | NURSING HOME |
| CONGRESSIONAL TERRITORY HULLAND | HOSPITAL |
| CONGRESSIONAL TERRITORY HULLAND | CORRECTIONAL INSTITUTION |
| CONGRESSIONAL TERRITORY HULLAND | |
| CONGRESSIONAL TERRITORY HULLAND | CITY CENTERS |
| CONGRESSIONAL TERRITORY HULLAND | STATE CAPITAL |
| CONGRESSIONAL TERRITORY HULLAND | COUNTY SEAT |
| CONGRESSIONAL TERRITORY HULLAND | CITY CENTER |
| CONGRESSIONAL TERRITORY HULLAND | INCORPORATED CITY (GENERALIZED) |
| CONGRESSIONAL TERRITORY HULLAND | |
| CONGRESSIONAL TERRITORY HULLAND | MISCELLANEOUS MAP FEATURES |
| CONGRESSIONAL TERRITORY HULLAND | CAMP, OTHER RELIGIOUS INSTITUTIONS |
| CONGRESSIONAL TERRITORY HULLAND | CAMPUS |
| CONGRESSIONAL TERRITORY HULLAND | CHURCH WITH CEMETERY ADJACENT |
| CONGRESSIONAL TERRITORY HULLAND | PARISH, SACRISTY, CHANCEL, PRESBYTERY |
| CONGRESSIONAL TERRITORY HULLAND | MONUMENT (GENERAL) |
| CONGRESSIONAL TERRITORY HULLAND | GRAND PIT |
| CONGRESSIONAL TERRITORY HULLAND | LANDFILL |
| CONGRESSIONAL TERRITORY HULLAND | AUTO JUMPWAY |
| CONGRESSIONAL TERRITORY HULLAND | CONCRETE DAM OR WATER POST |
| CONGRESSIONAL TERRITORY HULLAND | STATE FARM, SUBSTATION |
| CONGRESSIONAL TERRITORY HULLAND | DEPARTMENT OF TRANSPORTATION OFFICE |
| CONGRESSIONAL TERRITORY HULLAND | TOLL HOUSE, STATE POST OF ENTRY OR |
| CONGRESSIONAL TERRITORY HULLAND | REST STATION |
| CONGRESSIONAL TERRITORY HULLAND | WATER HOUSE |
| CONGRESSIONAL TERRITORY HULLAND | NATURAL GAS PETROLEUM PRODUCTS |
| CONGRESSIONAL TERRITORY HULLAND | CRUDE OIL OR WATER |
| CONGRESSIONAL TERRITORY HULLAND | CRUDE OIL OR WATER |
| CONGRESSIONAL TERRITORY HULLAND | NATURAL GAS PETROLEUM PRODUCTS |
| CONGRESSIONAL TERRITORY HULLAND | PIPELINE, NATURAL GAS |
| CONGRESSIONAL TERRITORY HULLAND | PIPELINE, CRUDE OIL |
| CONGRESSIONAL TERRITORY HULLAND | PIPELINE, CRUDE OIL |
| CONGRESSIONAL TERRITORY HULLAND | TRANSMISSION LINE, OVER OR UNDER |
| CONGRESSIONAL TERRITORY HULLAND | POWER PLANT |
| CONGRESSIONAL TERRITORY HULLAND | TRANSFORMER STATION |
| CONGRESSIONAL TERRITORY HULLAND | TRANSFORMER STATION |
| CONGRESSIONAL TERRITORY HULLAND | LATITUDE AND LONGITUDE INTERSECTION |
| CONGRESSIONAL TERRITORY HULLAND | NOTICE: STATE OR NATIONAL |
| CONGRESSIONAL TERRITORY HULLAND | OPEN TO THE PUBLIC |



*NOTE: ALL FEATURES EXCEPT TOWNSHIP ROADS AND CULTURE ARE CURRENT AS OF JANUARY 1, 2011.

NOTE: FOR DETAIL OF COUNTY STATE AID HIGHWAYS AND COUNTY ROADS IN INCORPORATED PLACES, SEE MAPS OF MUNICIPALITIES.

