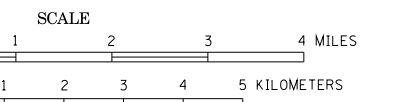


GENERAL HIGHWAY MAP BROWN COUNTY MINNESOTA

PREPARED BY THE
MINNESOTA DEPARTMENT OF TRANSPORTATION
OFFICE OF TRANSPORTATION DATA & ANALYSIS
IN COOPERATION WITH
U.S. DEPARTMENT OF TRANSPORTATION
FEDERAL HIGHWAY ADMINISTRATION



2011
BASIC DATA - 1977*

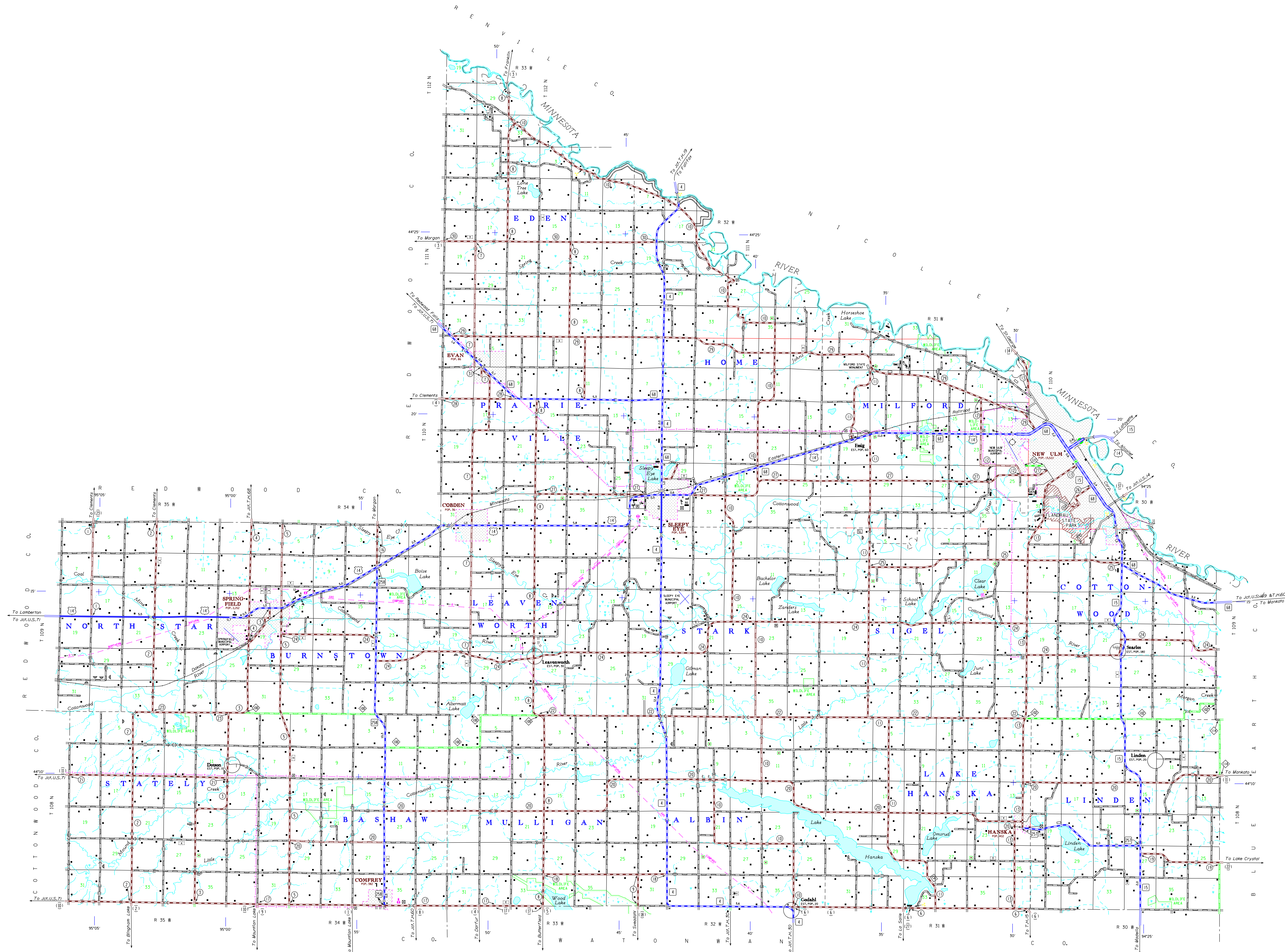
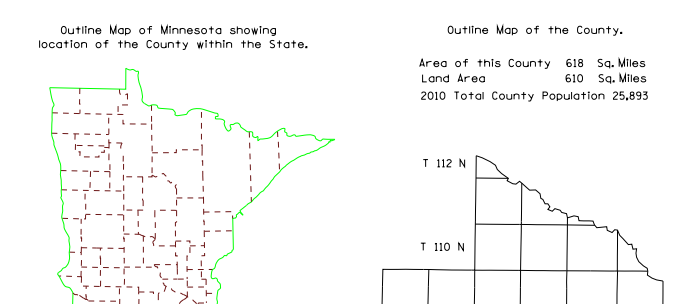
Projections
Minnesota Coordinate System
South Zone
Lambert Conformal Conic

North American Datum
of 1983



LEGEND

- | | |
|--|-------------------------------|
| ROAD AND ROADWAY FEATURES | NAVIGATION |
| PROJECTED ROAD | BASE LINES ON NATURAL STREAMS |
| PRIMITIVE ROAD | SHIP LINES ON INLAND LAKES |
| UNIMPROVED ROAD | DOCK, PIER OR LEADING |
| GRAVEL AND GRADED ROAD | NAVIGABLE STREAM |
| SOIL SURFACE ROAD | DAM WITH LOCK |
| GRAVEL OR STONE ROAD | LANDMARK LIGHT BEACON |
| BITUMEN ROAD | LIGHTHOUSE |
| PAVED ROAD | |
| DECEASED ROAD | |
| TRUNK HIGHWAY UNDER CONSTRUCTION | |
| ROADS IN UNINCORPORATED PLACES NOT FULLY WITHIN MUNICIPALITIES AND PROBING ROADS | |
| POINTS BETWEEN WHICH DISTANCES ARE MEASURED INDICATED | |
| GRADE SEPARATION | |
| FULL TRAFFIC INTERCHANGE | |
| PARTIAL TRAFFIC INTERCHANGES INDICATING TRAFFIC MOVEMENT | |
| ROAD SYSTEM DESIGNATIONS | |
| INTERSTATE TRUNK HIGHWAY | |
| UNNUMBERED TRUNK HIGHWAY | |
| STATE NUMBERED TRUNK HIGHWAY | |
| COUNTY STATE AID HIGHWAY | |
| COUNTY STATE AID IN ADJUTING COUNTY | |
| TERMINATION OF DESIGNATED ROUTE | |
| INTERSTATE EXIT | |
| GREAT RIVER ROAD | |
| FEDERAL AID INTERSTATE SYSTEM | |
| NATIONAL FOREST HIGHWAY | |
| NATIONAL FOREST DEVELOPMENT | |
| INDIAN SERVICE ROAD | |
| NUMBERED STATE TRUNK HIGHWAY | |
| STATE PARK ROAD | |
| RAILROADS | |
| RAILROAD ANY NUMBER OF TRACKS BY A SINGLE OPERATING COMPANY OR BY TRAINS OF ANOTHER CARRIED UNDER THROUGH RIGHTS | |
| RAILROADS IN ADJUTATION (TWO OR MORE TRACKS OF SEPARATELY OPERATED COMPANIES OR SEPARATE RIGHTS OF WAY) | |
| RAILROAD STATION | |
| GRADE CROSSING | |
| INDUSTRIAL HOISTWAY BELLEVILLE | |
| OVERPASS HIGHWAY ABOVE | |
| ARWAYS | |
| MILITARY FIELD | |
| COMMERCIAL OR MANAGERIAL FIELD | |
| COMPLETE FACILITIES | |
| LANDING AREA OR STRIP | |
| SCALEWAY BASE | |
| ARMY LIGHT BEACON/GENERAL | |
| RADIO RANGE STATION | |
| STRUCTURES | |
| GENERAL SYMBOLS LOWER 20' SPAN | |
| SMALL SPANNS CLOSELY SPACED | |
| OVERPASS | |
| GENERAL SYMBOLS 20' TO 50' SPAN | |
| GENERAL | |
| DRAINAGE | |
| ARCH | |
| FRIS | |
| THE MAIN FALL IS KEPT HERE APPLICABLE | |
| Other Structures | |
| RECTANGULAR BRIDGE | |
| DAY WITH ROAD LARGE SCALE | |
| DAY WITH ROAD SMALL SCALE | |
| DAY WITHOUT ROAD LARGE SCALE | |
| DAY WITHOUT ROAD SMALL SCALE | |
| LEVEE ON ONE SIDE | |
| LEVEE ON ONE SIDE WITH ROAD | |
| WOOD STRUCTURES 10 TO 20' SPAN | |
| CONCRETE FORD OR SIP | |
| FORD - ROAD ESTABLISHED | |
| BOUNDARIES | |
| NATIONAL OR STATE | |
| COUNTY | |
| CONGRESSIONAL TOWNSHIP UNL. LAND | |
| CONGRESSIONAL LINE | |
| SECTION LINE | |
| CONGRESSIONAL AREA | |
| NATIONAL OR STATE PARK | |
| NATIONAL OR STATE FOREST | |
| INDIAN RESERVATION | |
| GAS REFUSE | |
| WILDLIFE MANAGEMENT AREA STATIONS | |
| WATERWAY AREA PRESERVE | |
| MATCH LINE BETWEEN ADJOINING SHEETS OF THE SAME COUNTY | |
| DRAINAGE | |
| INTERMITTENT STREAM | |
| NATURAL STREAM | |
| WIDE STREAM | |
| WATERWAY | |
| WATERWAY WITH TRANSDUCER STATION | |
| DRAINAGE STATION | |
| LAKE OR POND | |
| CONSERVATION | |
| FOREST RANGER STATION | |
| GUIDE OR BINDER STATION | |
| NOT PERMANENTLY OCCUPIED | |
| FOOT BRIDGE | |
| GAME PRESERVE | |
| SEPARATION OF LANDS | |
| PROMINENT ELEVATION | |
| MINIMUM ELEVATION | |
| MANICIPAL BP - BAYSIDE | |
| PUBLIC ACCESS POINT | |
| RECREATION | |
| GOLF COURSE OR COUNTRY CLUB | |
| GOLF CLUB | |
| ATHLETIC FIELD | |
| RECREATION PARK | |
| BEACH | |
| BEACHES, BALLFIELDS, ETC. | |
| BATHING BEACH OR SWIMMING POOL | |
| SCENE SITE | |
| CAMP OR LODGE | |
| FARM AND DWELLING UNITS | |
| FARM UNIT | |
| SMALLER THAN FARM | |
| BARNYARD OR DOMESTICS FOR STUDENTS | |
| BARNYARD, WAREHOUSE, ETC. | |
| SEASONAL DWELLING | |
| HOSE OR GROUP OF BUILDINGS CLOSELY SPACED | |
| NUMBERED HOUSES TO THE OWNER | |
| INDICATE NUMBER OF EACH UNIT | |
| SHOW AREA USED TO INDICATE LOCATION OF ANY CULTURAL FEATURE | |
| SHOW OUT OF POSITION | |
| INDUSTRIAL | |
| FACTORY OR INDUSTRIAL PLANT | |
| WAREHOUSE | |
| STORAGE TANKS, OIL OR GAS | |
| STEEL | |
| BEET SUMP | |
| STOCK PILE/FEEDLOT | |
| QUARRY/CRUSHERY OR CRACK FACTORY | |
| WAREHOUSE | |
| COMMERCIAL | |
| STORE OR SMALL BUSINESS ESTABLISHMENT | |
| HOTEL | |
| RESTAURANT | |
| THEATRE | |
| BARBERSHOP | |
| GREENHOUSE | |
| PUBLIC SERVICE FACILITIES | |
| POST OFFICE | |
| FIRE STATION | |
| MUSEUM | |
| PUBLIC LIBRARY | |
| SCHOOL | |
| ALL-ROUNDER POINT OF ENTRY | |
| RAILROAD STATION | |
| GRAND STAIRWAY PLANT | |
| NURSING HOME | |
| HOSPITAL | |
| TRINITY | |
| CONVENTUAL INSTITUTION | |
| CITY CENTERS | |
| STATE CAPITAL | |
| COUNTY SEAT | |
| CITY CENTER | |
| INCORPORATED CITY (GENERALIZED) | |
| UNINCORPORATED COMMUNITY | |
| MISCELLANEOUS MAP FEATURES | |
| CHAPEL OR OTHER RELIGIOUS INSTITUTIONS | |
| CHURCH WITH CEMETERY ADJACENT | |
| PARSONAGE/RESIDENCE OF MINISTER | |
| MONUMENT (GENERAL) | |
| GRAVEL PIT | |
| GRAVEL SAND OR WASTEWATER POND | |
| SCARP METAL JAW | |
| SCARP METAL JAW AREA | |
| STATE PARK STATION | |
| DEPARTMENT OF TRANSPORTATION DISTRICT OFFICE | |
| TOLL HOUSE STATE POST OF ENTRY OR REST STOP | |
| WATER HOUSE | |
| NATURAL GAS PETROLEUM PRODUCTS | |
| CRUDE OIL OR WATER | |
| STATION OR PUMPING STATION | |
| NATURAL GAS PETROLEUM PRODUCTS | |
| PIPELINE NATURAL GAS | |
| PIPELINE CRUDE OIL | |
| PIPELINE WATER | |
| TRANSMISSION LINE (30KV OR OVER) | |
| POWER PLANT | |
| TRANSFORMATION STATION | |
| CONDUIT LINE | |
| TRANSFORMATION STATION | |
| LATITUDE AND LONGITUDE INTERSECTION | |
| NOTICE: STATE OF MINNESOTA | |
| OPEN TO THE PUBLIC | |



To request this document in an alternative format call the Disability Programs Coordinator at 651-296-4718, or 1-800-657-3774 (Greater Minnesota) 711 or 1-800-627-3529 (Minnesota Relay). You may also send an e-mail to: AD@dot.state.mn.us. (Please request at least one week in advance).

*NOTE: ALL FEATURES EXCEPT TOWNSHIP ROADS AND CULTURE ARE CURRENT AS OF JANUARY 1, 2011.
NOTE: FOR DETAIL OF COUNTY STATE AID HIGHWAYS AND COUNTY ROADS IN INCORPORATED PLACES, SEE MAPS OF MUNICIPALITIES.