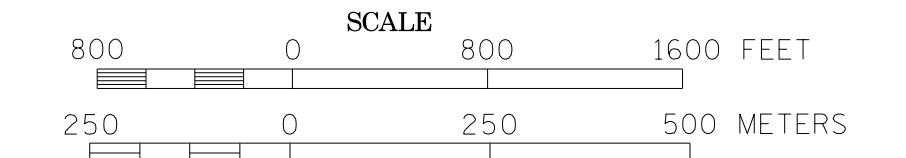
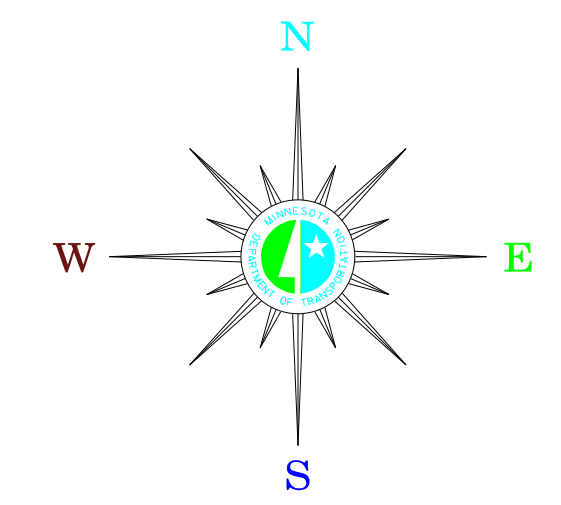


MUNICIPALITIES OF WINONA CO.

PREPARED BY THE
MINNESOTA DEPARTMENT OF TRANSPORTATION
OFFICE OF TRANSPORTATION DATA & ANALYSIS
IN COOPERATION WITH
U.S. DEPARTMENT OF TRANSPORTATION
FEDERAL HIGHWAY ADMINISTRATION

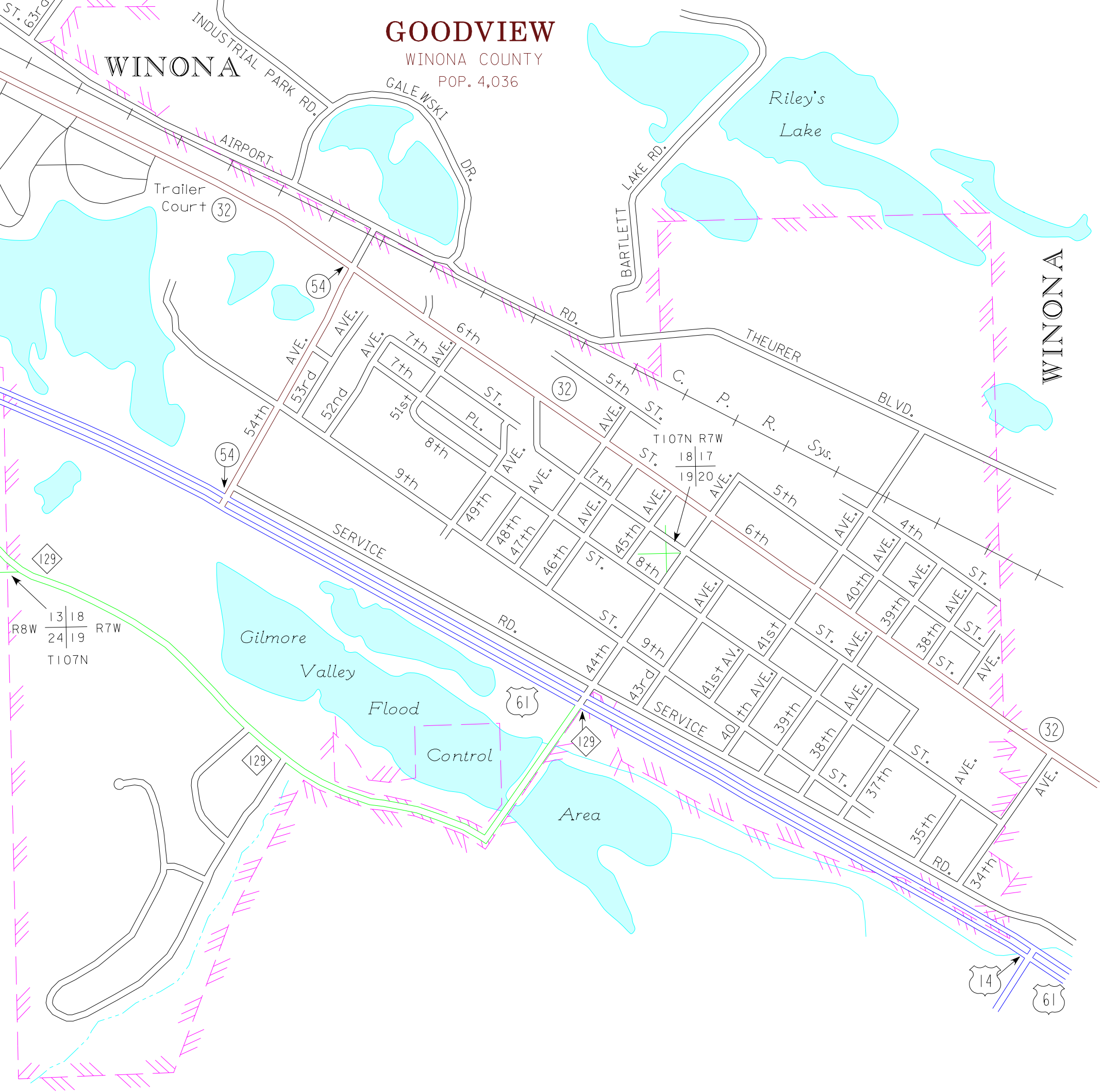
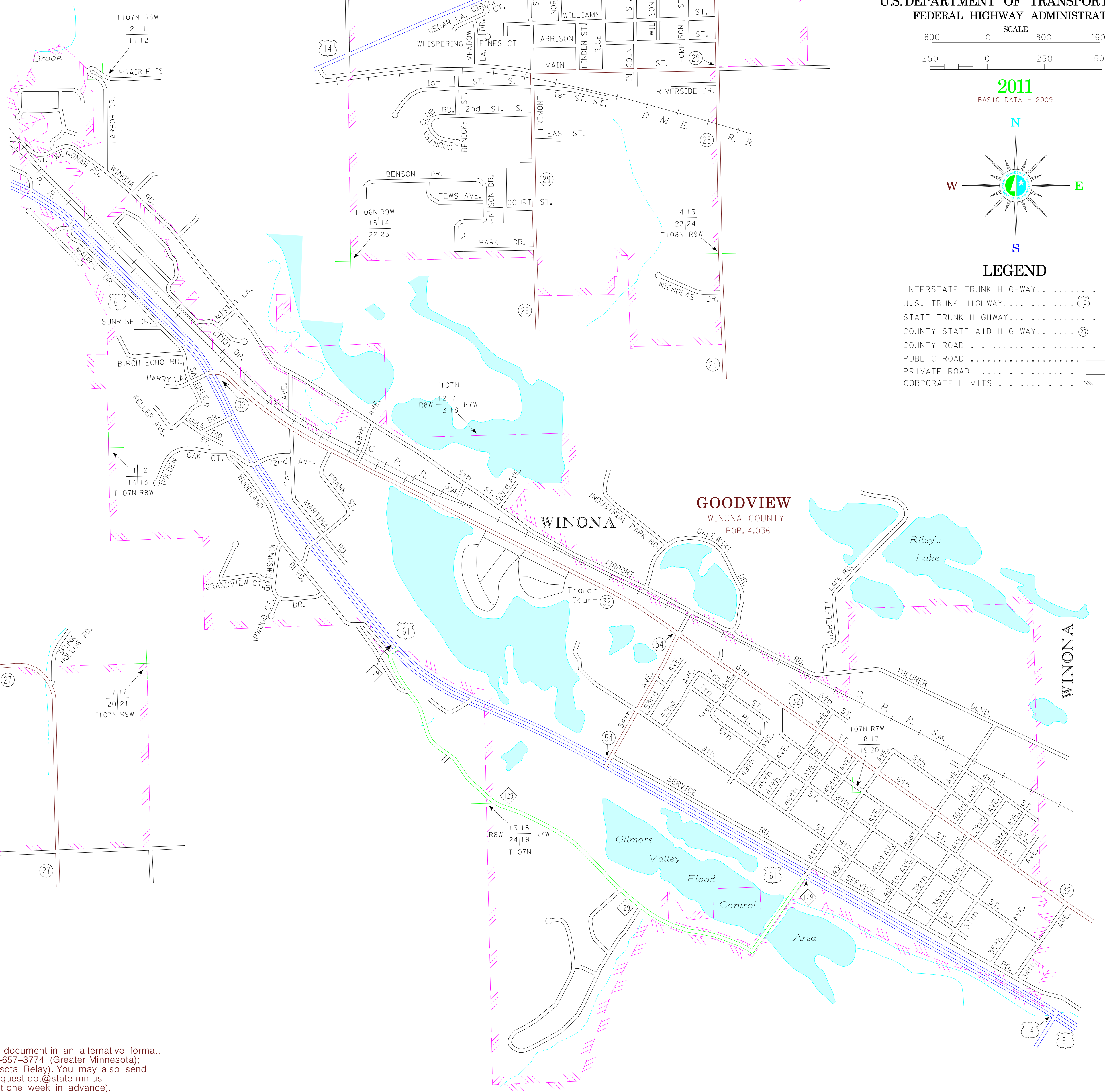
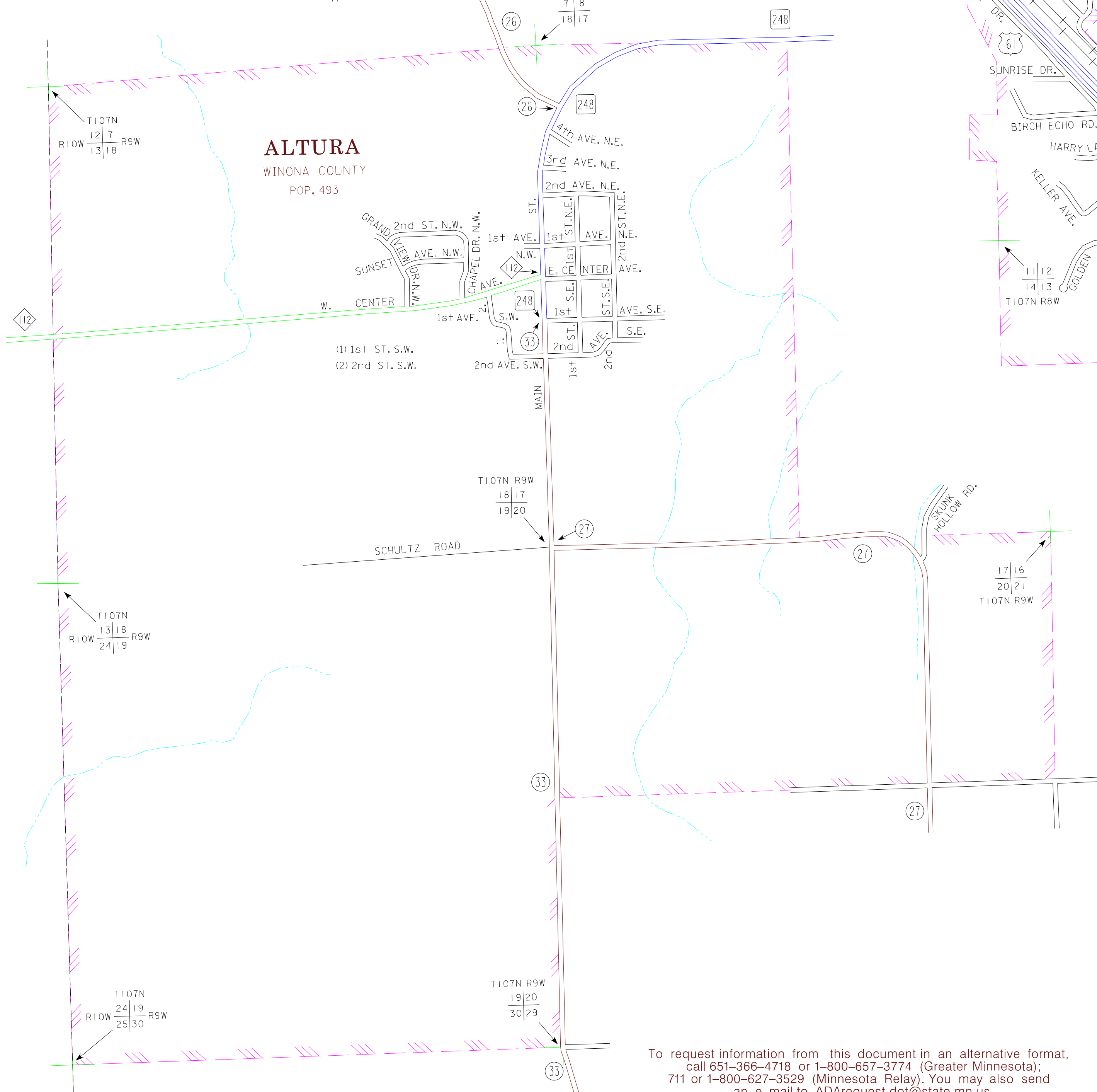
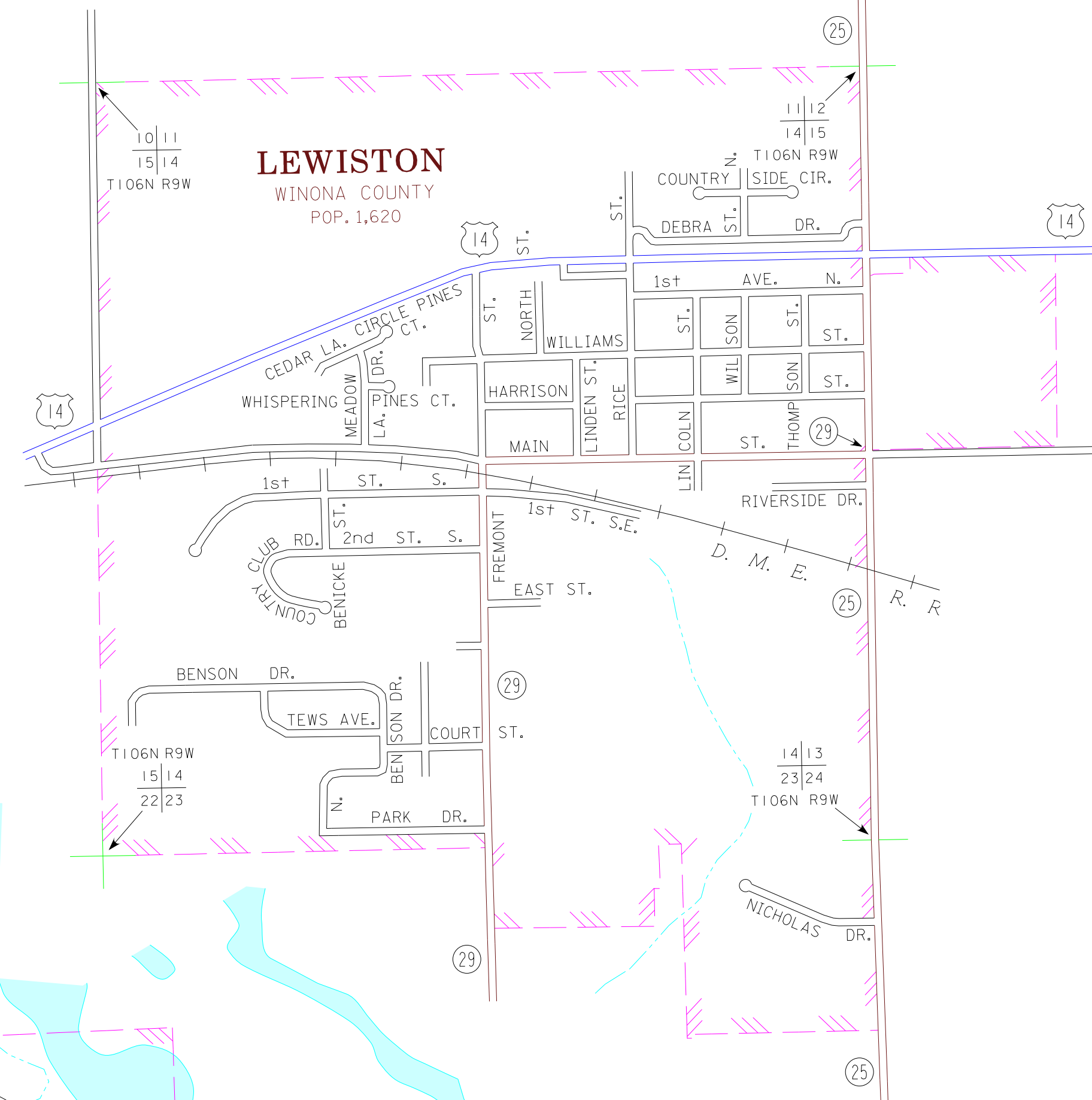
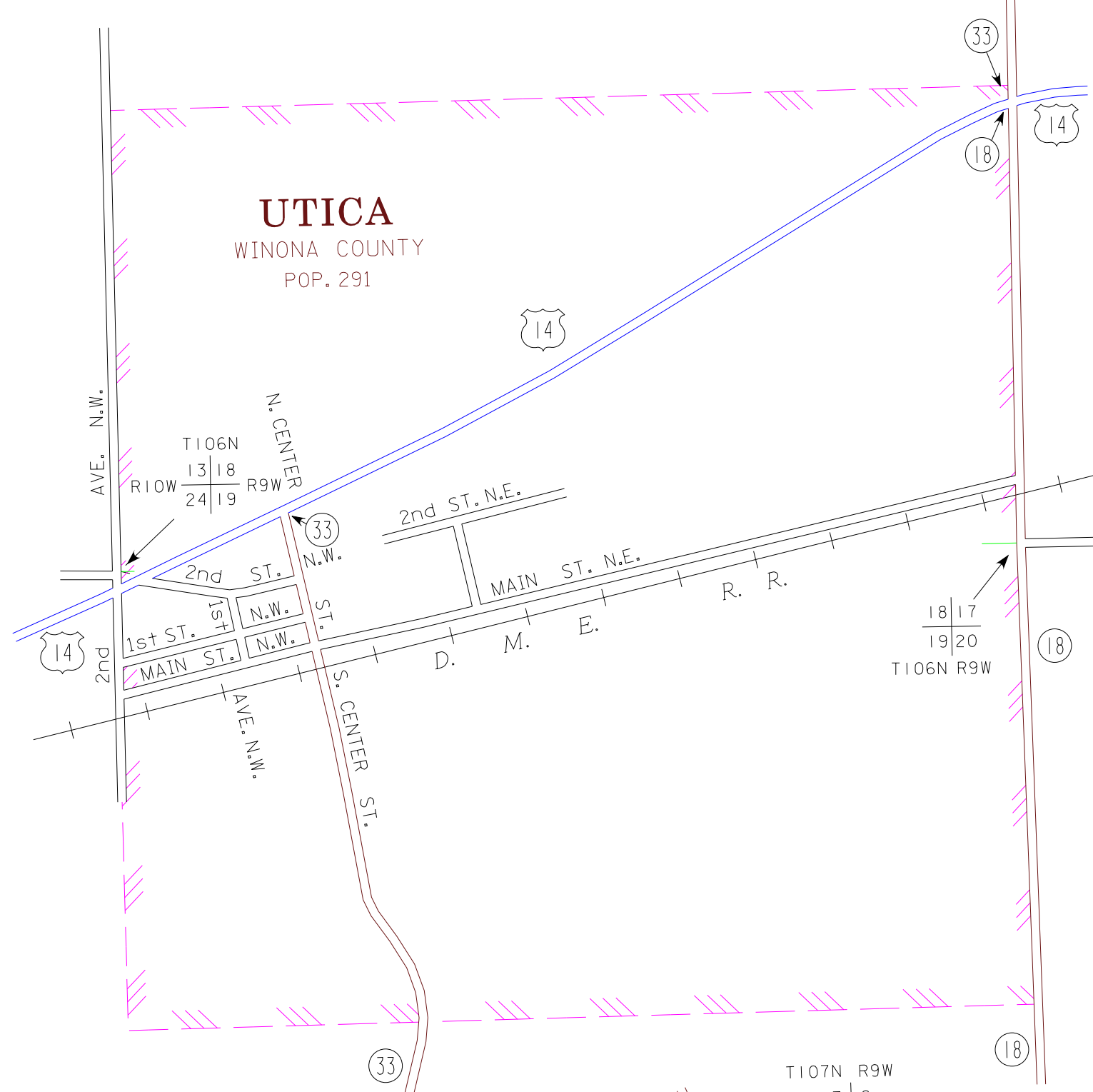


2011
BASIC DATA - 2009



LEGEND

- INTERSTATE TRUNK HIGHWAY..... (I-35)
- U.S. TRUNK HIGHWAY..... (US-14)
- STATE TRUNK HIGHWAY..... (ST-25)
- COUNTY STATE AID HIGHWAY..... (CSA-29)
- COUNTY ROAD..... (C-33)
- PUBLIC ROAD..... (P-26)
- PRIVATE ROAD..... (PR-12)
- CORPORATE LIMITS..... (Hatched line)



To request information from this document in an alternative format, call 651-366-4718 or 1-800-657-3774 (Greater Minnesota); 711 or 1-800-627-3529 (Minnesota Relay). You may also send an e-mail to ADArequest.dot@state.mn.us. (Please request at least one week in advance).

NOTE: 2010 U.S. CENSUS FIGURES SHOWN FOR ALL MUNICIPALITIES UNLESS OTHERWISE STATED.

MUNICIPALITIES SHOWN ON THIS SHEET
ALTURA
GOODVIEW
LEWISTON
UTICA