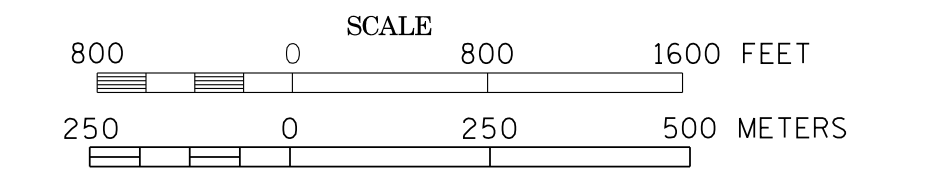
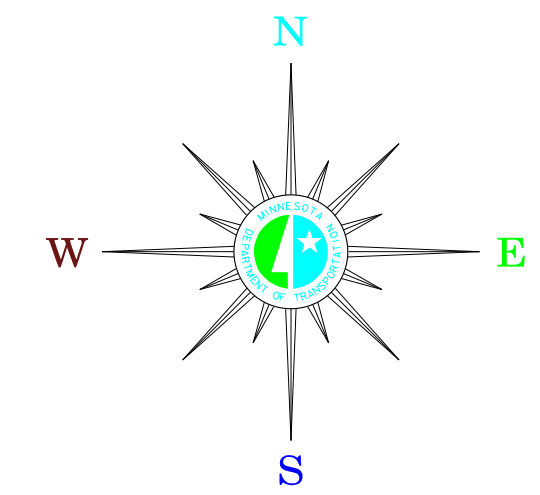


MUNICIPALITIES OF  
**TRAVERSE CO.**

PREPARED BY THE  
MINNESOTA DEPARTMENT OF TRANSPORTATION  
OFFICE OF TRANSPORTATION DATA & ANALYSIS  
IN COOPERATION WITH  
U.S. DEPARTMENT OF TRANSPORTATION  
FEDERAL HIGHWAY ADMINISTRATION

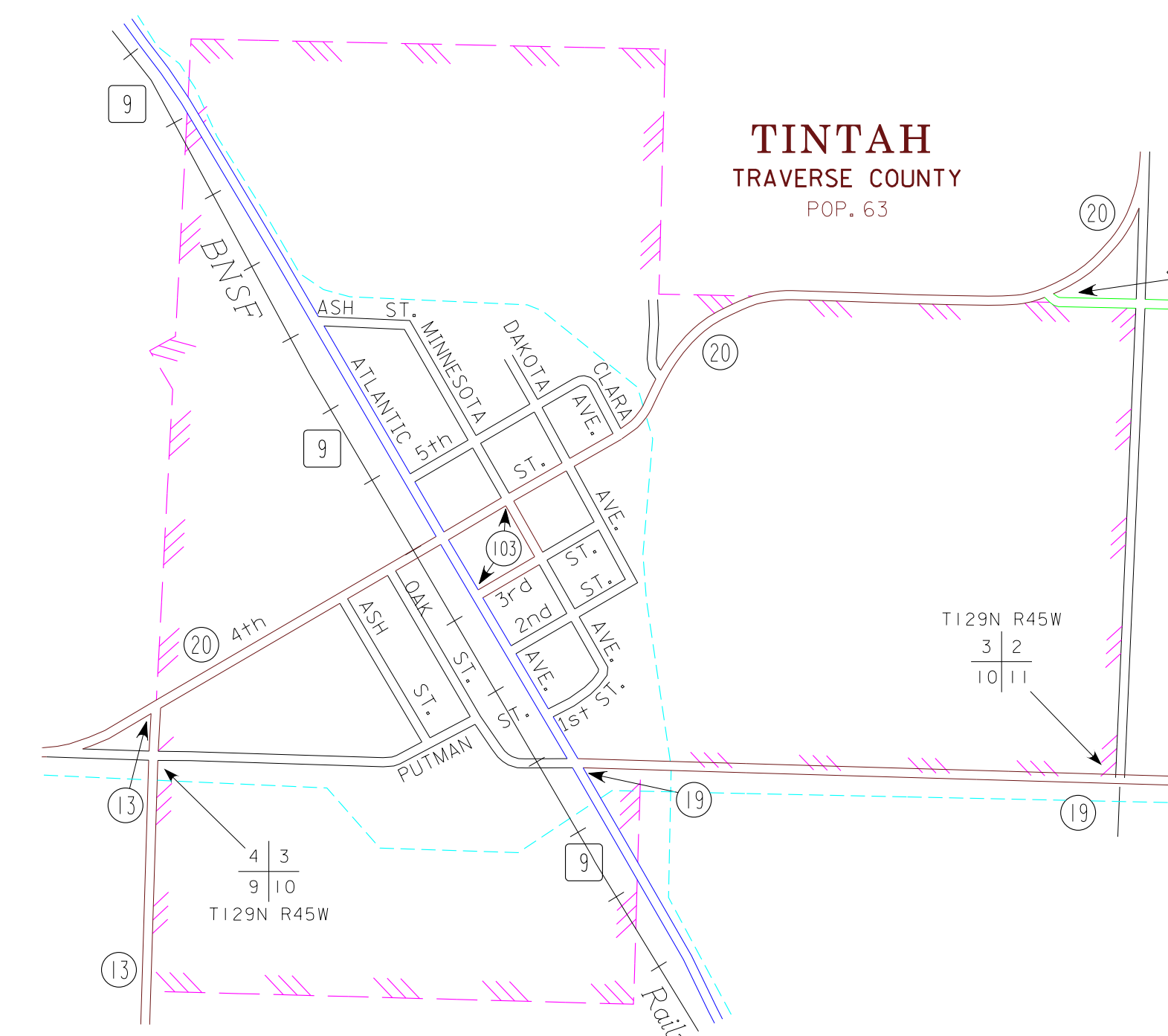
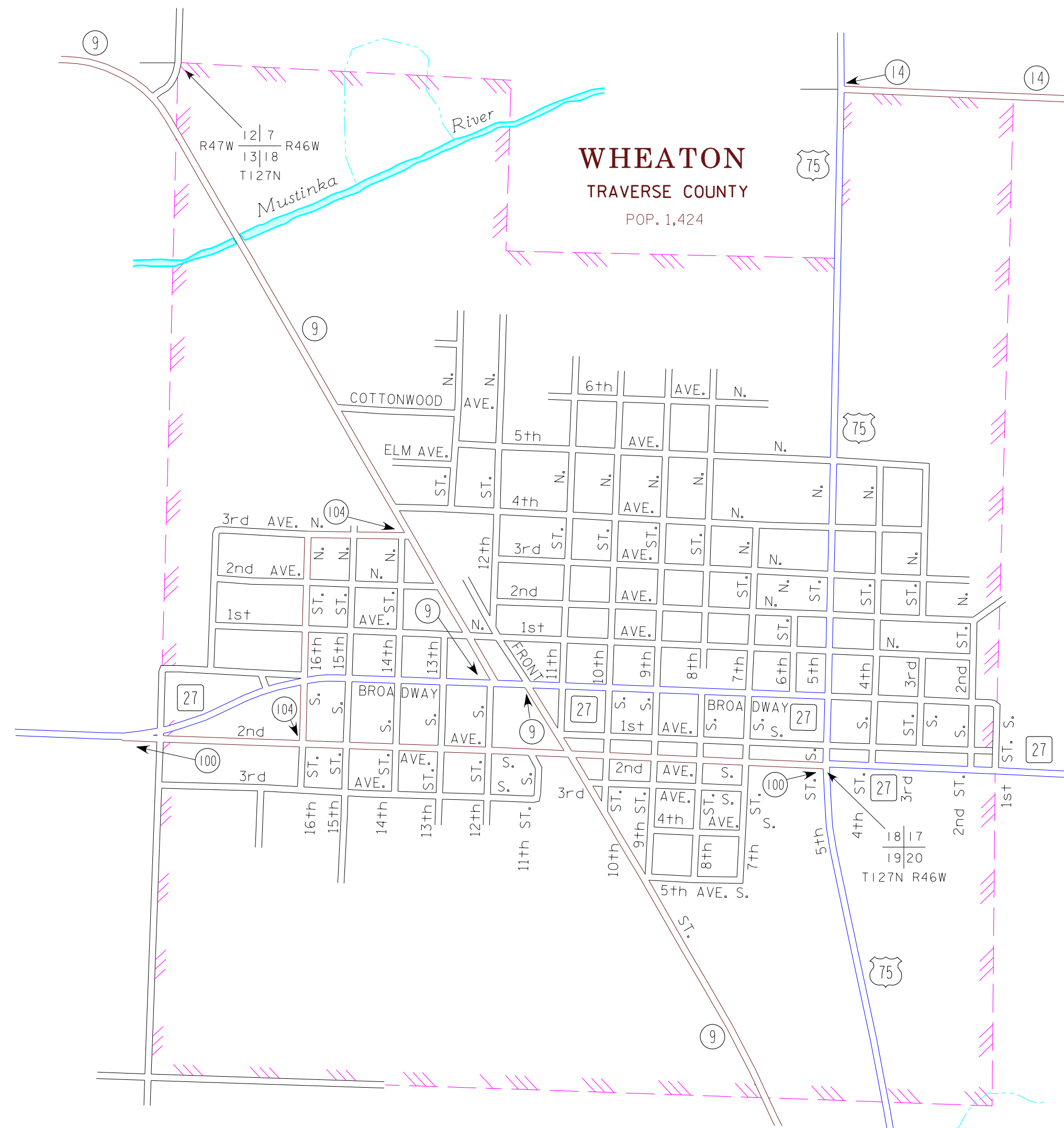
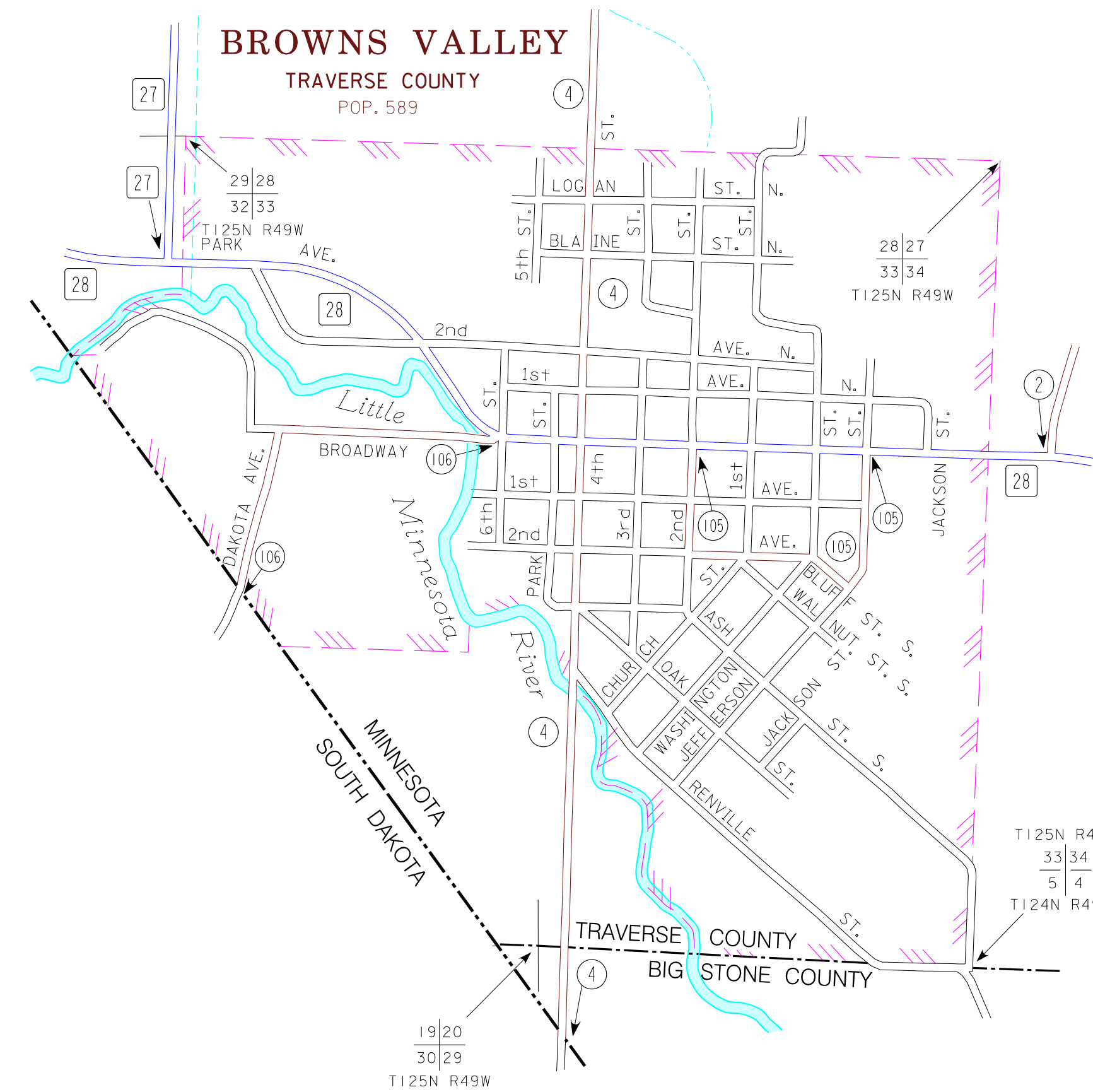
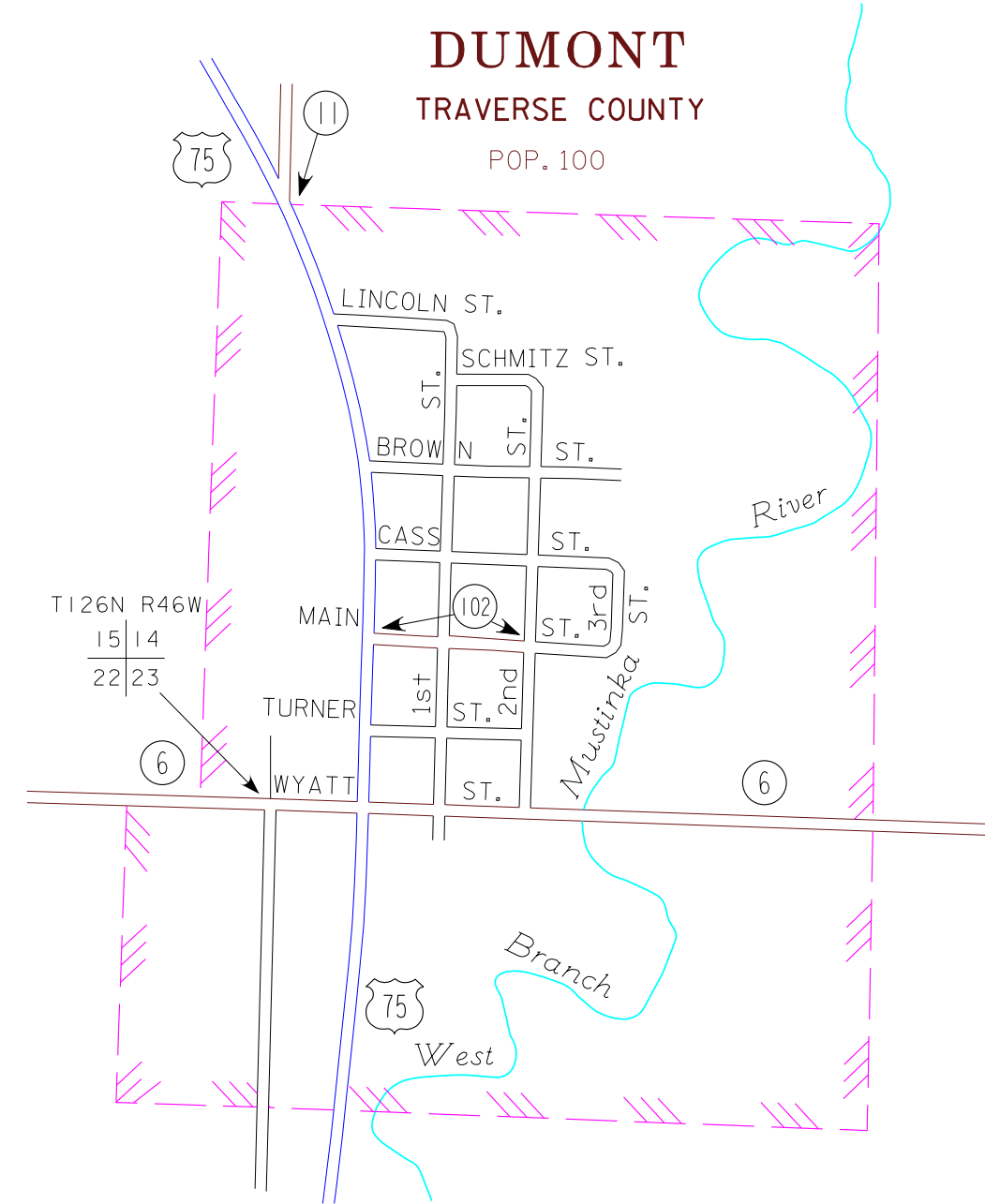


2011  
BASIC DATA - 2009



**LEGEND**

- INTERSTATE TRUNK HIGHWAY..... (35)
- U.S. TRUNK HIGHWAY..... (75)
- STATE TRUNK HIGHWAY..... (55)
- COUNTY STATE AID HIGHWAY..... (23)
- COUNTY ROAD..... (15)
- PUBLIC ROAD .....
- PRIVATE ROAD .....
- CORPORATE LIMITS.....



- MUNICIPALITIES SHOWN  
ON THIS SHEET
- BROWNS VALLEY
  - DUMONT
  - TINTAH
  - WHEATON

To request information from this document in an alternative format, call 651-281-716 or 1-800-627-3774 (Greater Minnesota) 711 or 1-800-627-3320 (Minnesota Relay). You may also send an e-mail to ADArequest@state.mn.us. (Please request at least one week in advance.)

NOTE: 2010 U.S. CENSUS FIGURES SHOWN FOR ALL MUNICIPALITIES UNLESS OTHERWISE STATED.