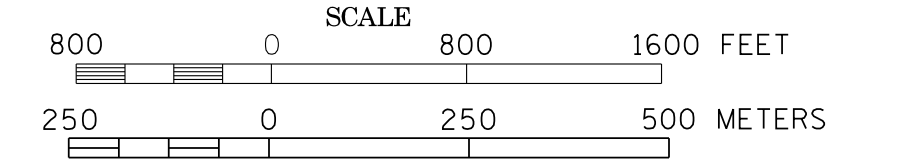
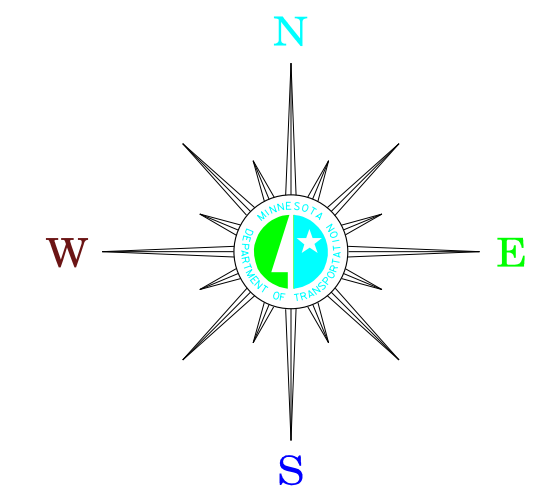


MUNICIPALITIES OF
TODD CO.

PREPARED BY THE
MINNESOTA DEPARTMENT OF TRANSPORTATION
OFFICE OF TRANSPORTATION DATA & ANALYSIS
IN COOPERATION WITH
U.S. DEPARTMENT OF TRANSPORTATION
FEDERAL HIGHWAY ADMINISTRATION



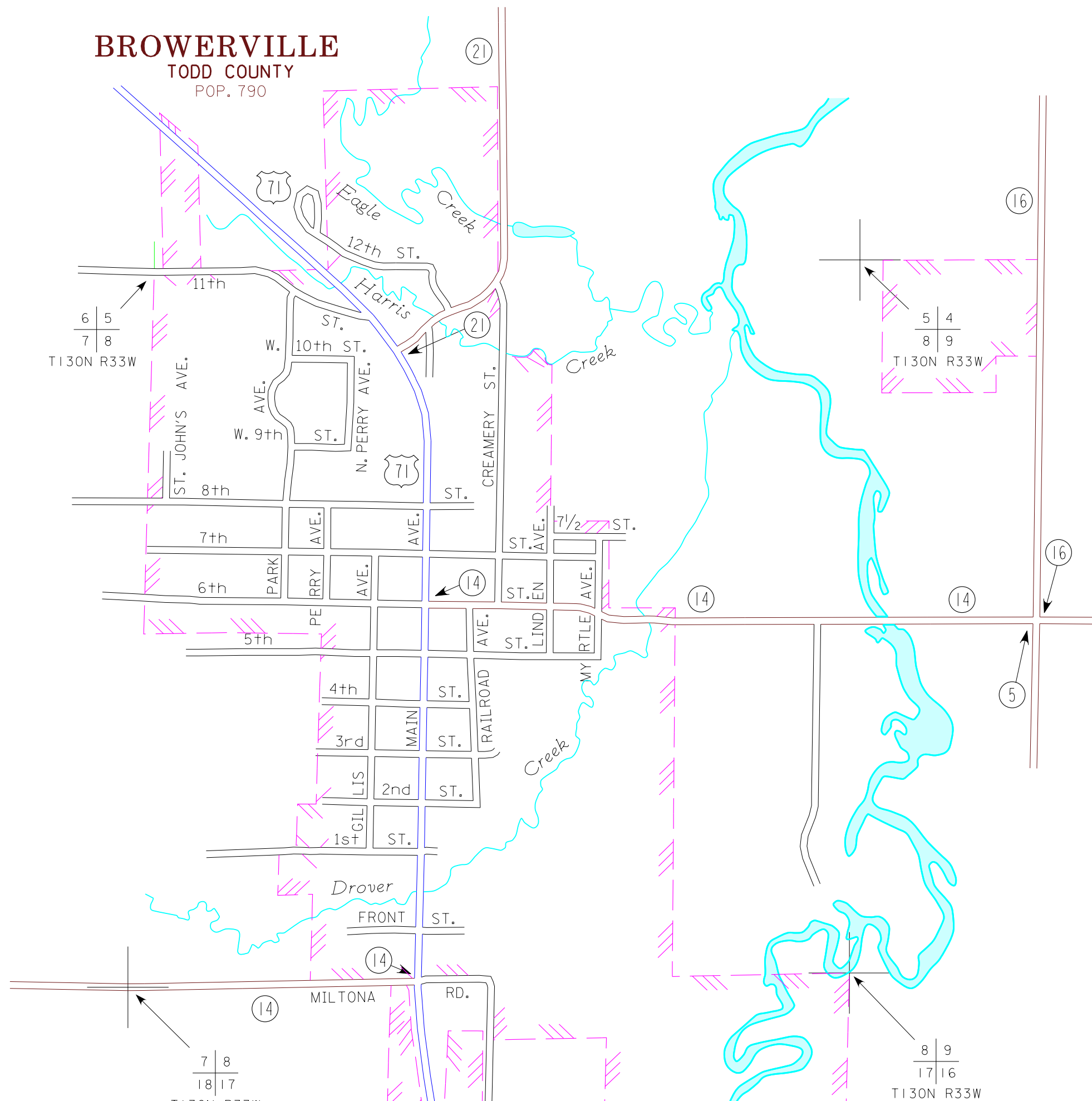
2011
BASIC DATA - 2009



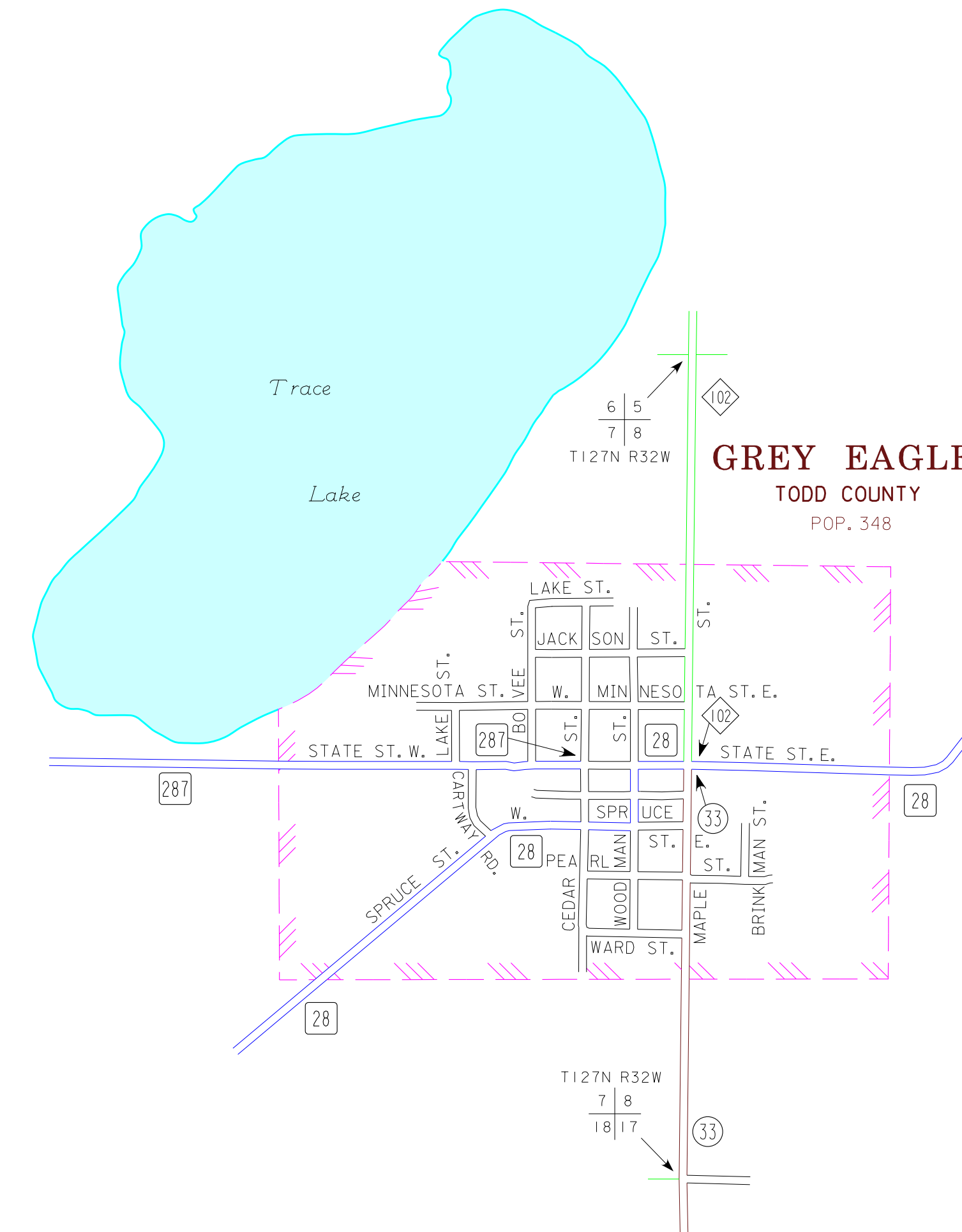
LEGEND

- INTERSTATE TRUNK HIGHWAY..... (35)
- U.S. TRUNK HIGHWAY..... (71)
- STATE TRUNK HIGHWAY..... (55)
- COUNTY STATE AID HIGHWAY..... (23)
- COUNTY ROAD..... (14)
- PUBLIC ROAD..... (16)
- PRIVATE ROAD..... (5)
- CORPORATE LIMITS.....

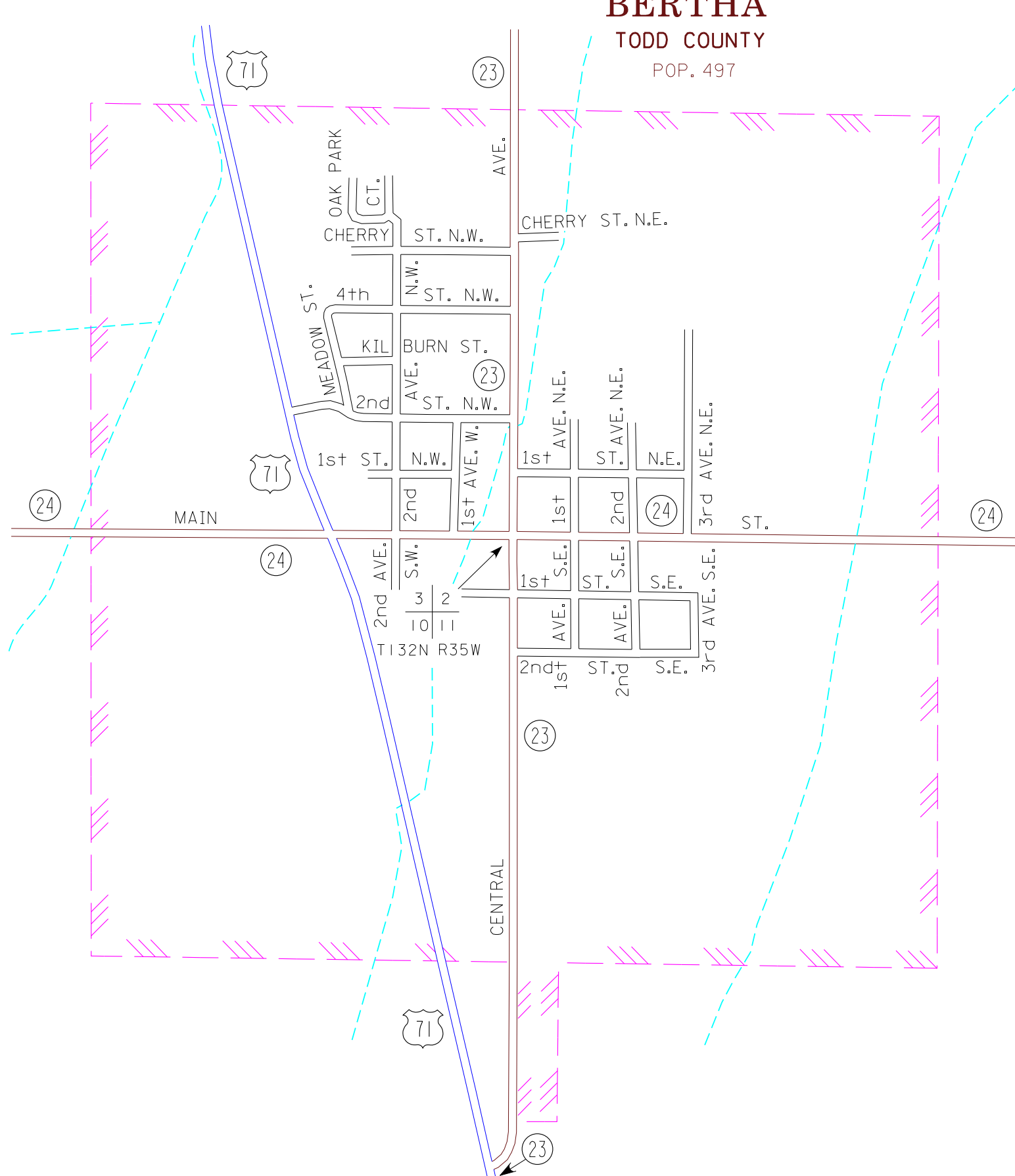
BROWERVILLE
TODD COUNTY
POP. 790



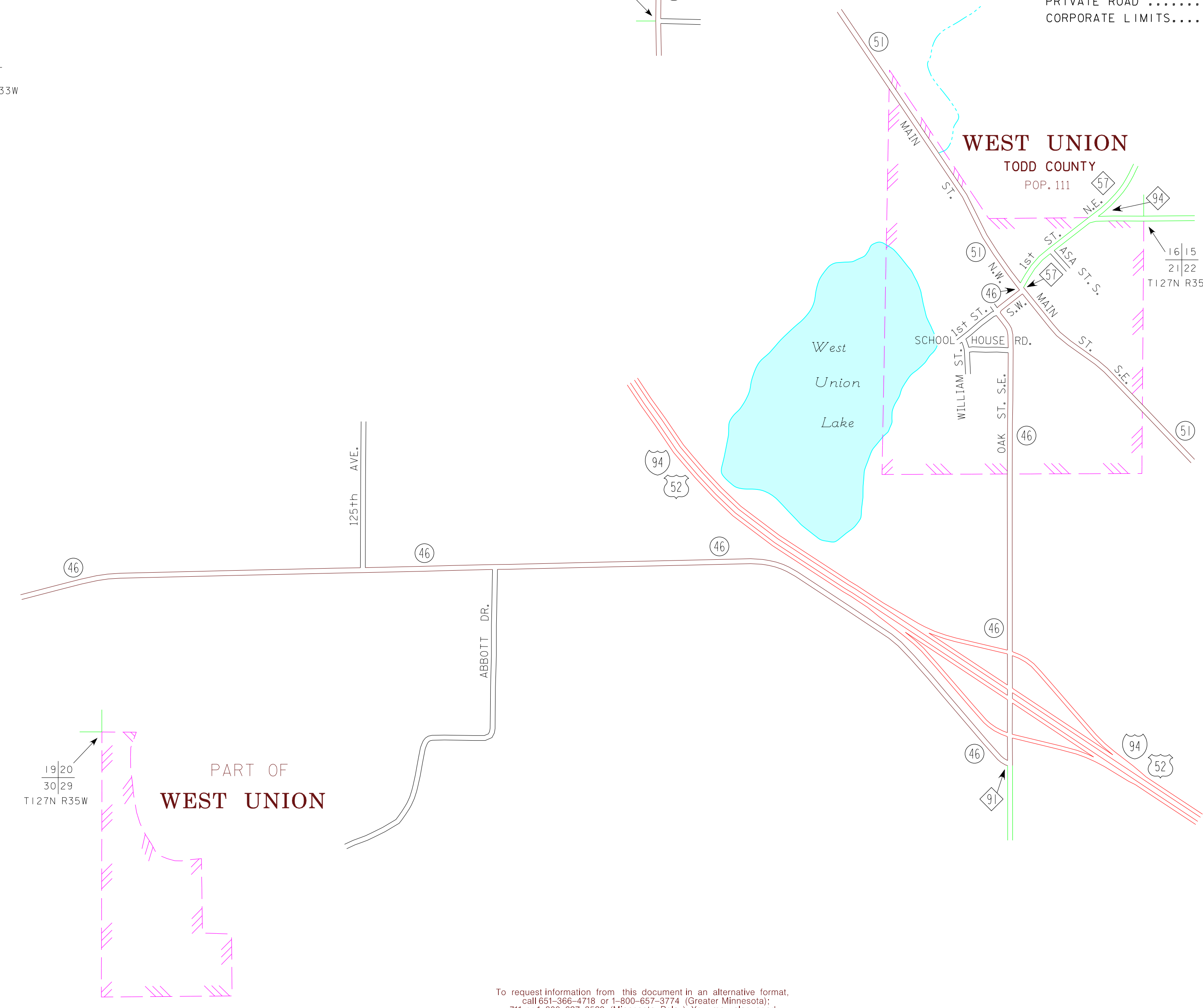
GREY EAGLE
TODD COUNTY
POP. 348



BERTHA
TODD COUNTY
POP. 497



WEST UNION
TODD COUNTY
POP. 111



PART OF
WEST UNION

MUNICIPALITIES SHOWN
ON THIS SHEET

- BERTHA
- BROWERVILLE
- GREY EAGLE
- WEST UNION

- MOTLEY
(See Morrison Co.
3 of 5)
- OSAKIS
(See Douglas Co.
1 of 2)

To request information from this document in an alternative format,
call 651-366-4718 or 1-800-657-3774 (Greater Minnesota);
711 or 1-800-627-3529 (Minnesota Relay). You may also send
an e-mail to ADArequest.dot@state.mn.us.
(Please request at least one week in advance).

NOTE: 2010 U.S. CENSUS FIGURES SHOWN FOR ALL MUNICIPALITIES UNLESS OTHERWISE STATED.