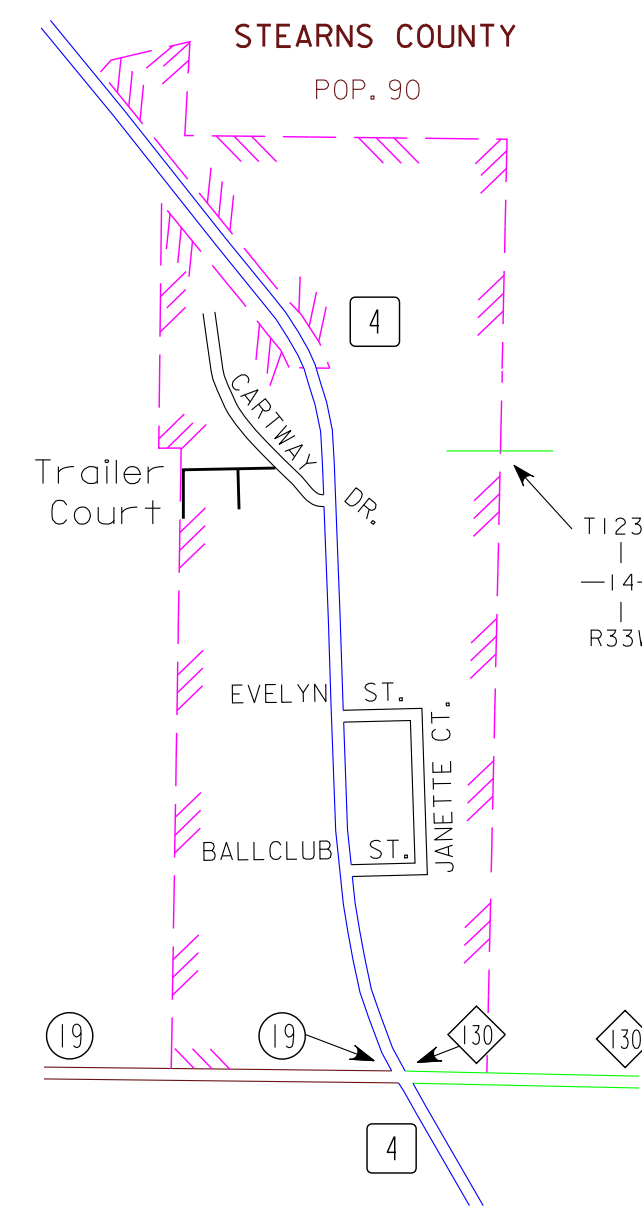


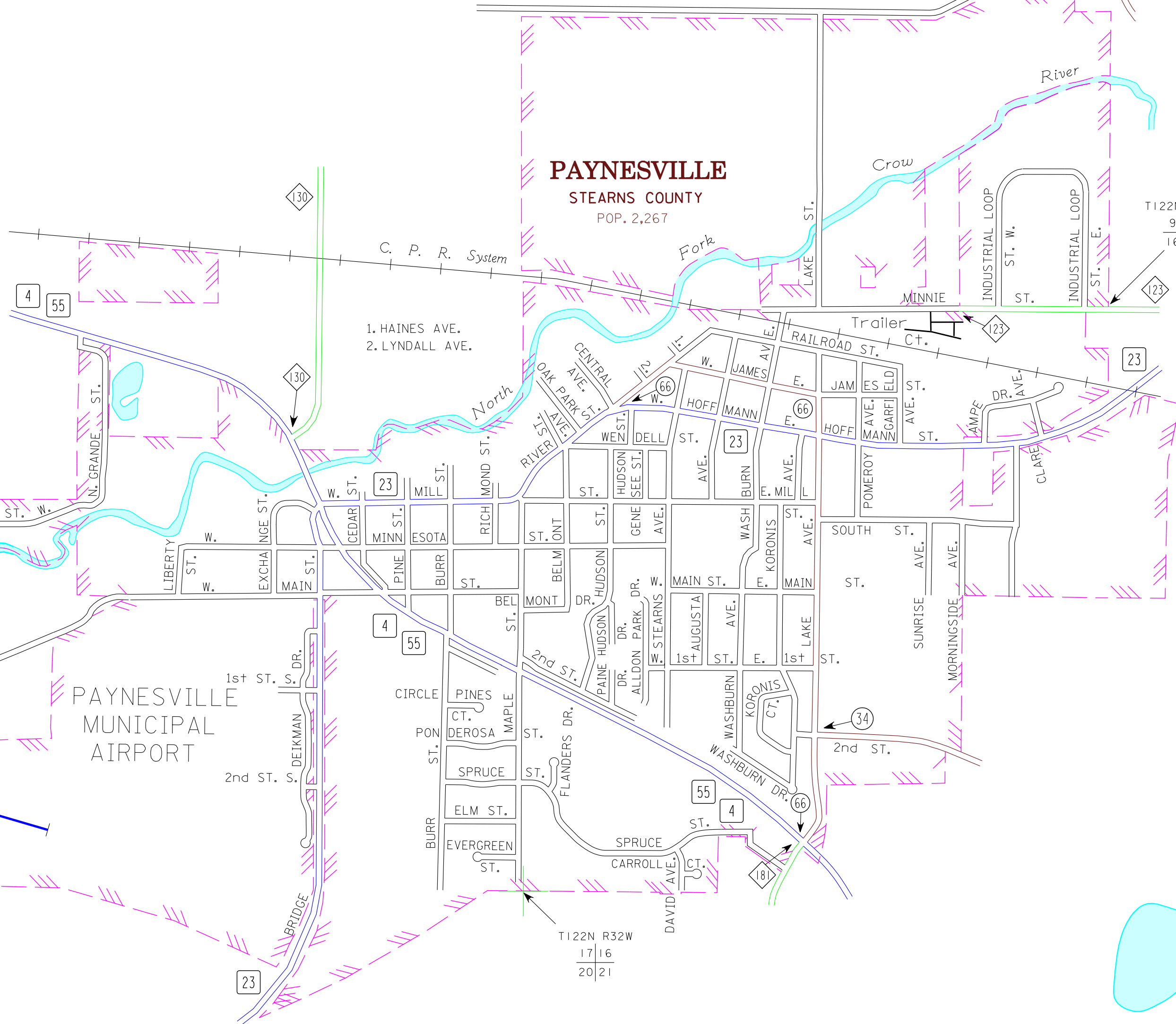
LAKE HENRY

STEARNS COUNTY
POP. 90



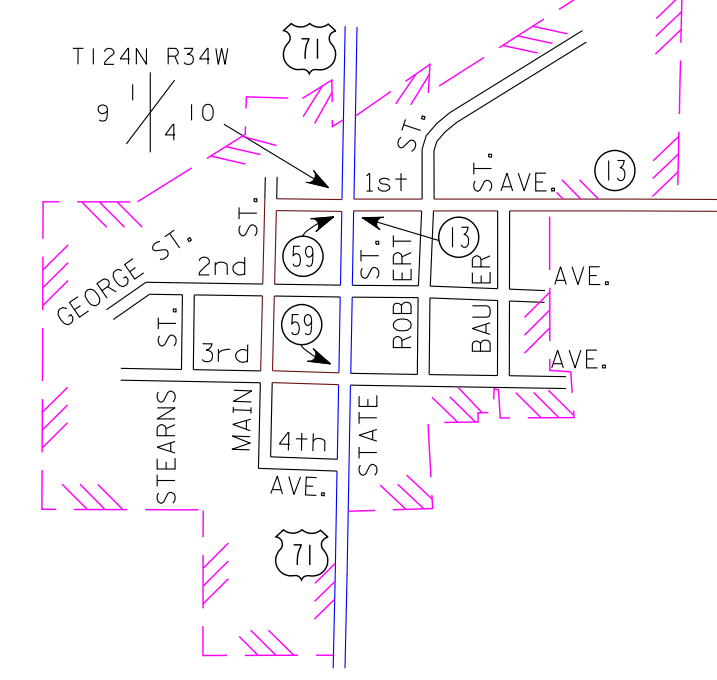
PAYNESVILLE

STEARNS COUNTY
POP. 2,267



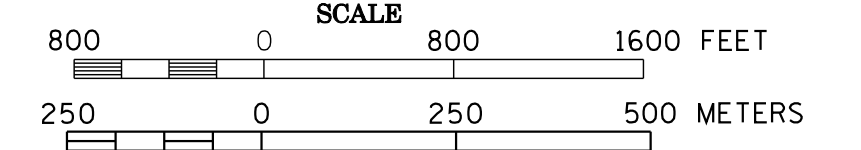
ELROSA

STEARNS COUNTY
POP. 166

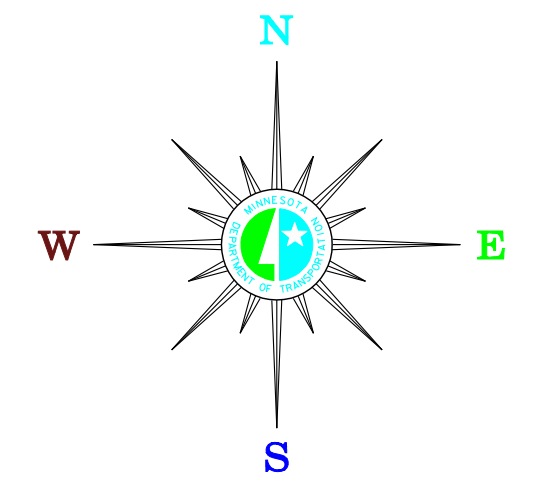


MUNICIPALITIES OF STEARNS CO.

PREPARED BY THE
MINNESOTA DEPARTMENT OF TRANSPORTATION
OFFICE OF TRANSPORTATION DATA & ANALYSIS
IN COOPERATION WITH
U.S. DEPARTMENT OF TRANSPORTATION
FEDERAL HIGHWAY ADMINISTRATION



2009
BASIC DATA - 1994



LEGEND

- INTERSTATE TRUNK HIGHWAY..... (I-90)
- U.S. TRUNK HIGHWAY..... (US-169)
- STATE TRUNK HIGHWAY..... (ST-55)
- COUNTY STATE AID HIGHWAY..... (CS-23)
- COUNTY ROAD..... (CR-19)
- PUBLIC ROAD..... (PR-4)
- PRIVATE ROAD..... (PR-1)
- CORPORATE LIMITS..... (Dashed line)

PAYNESVILLE MUNICIPAL AIRPORT

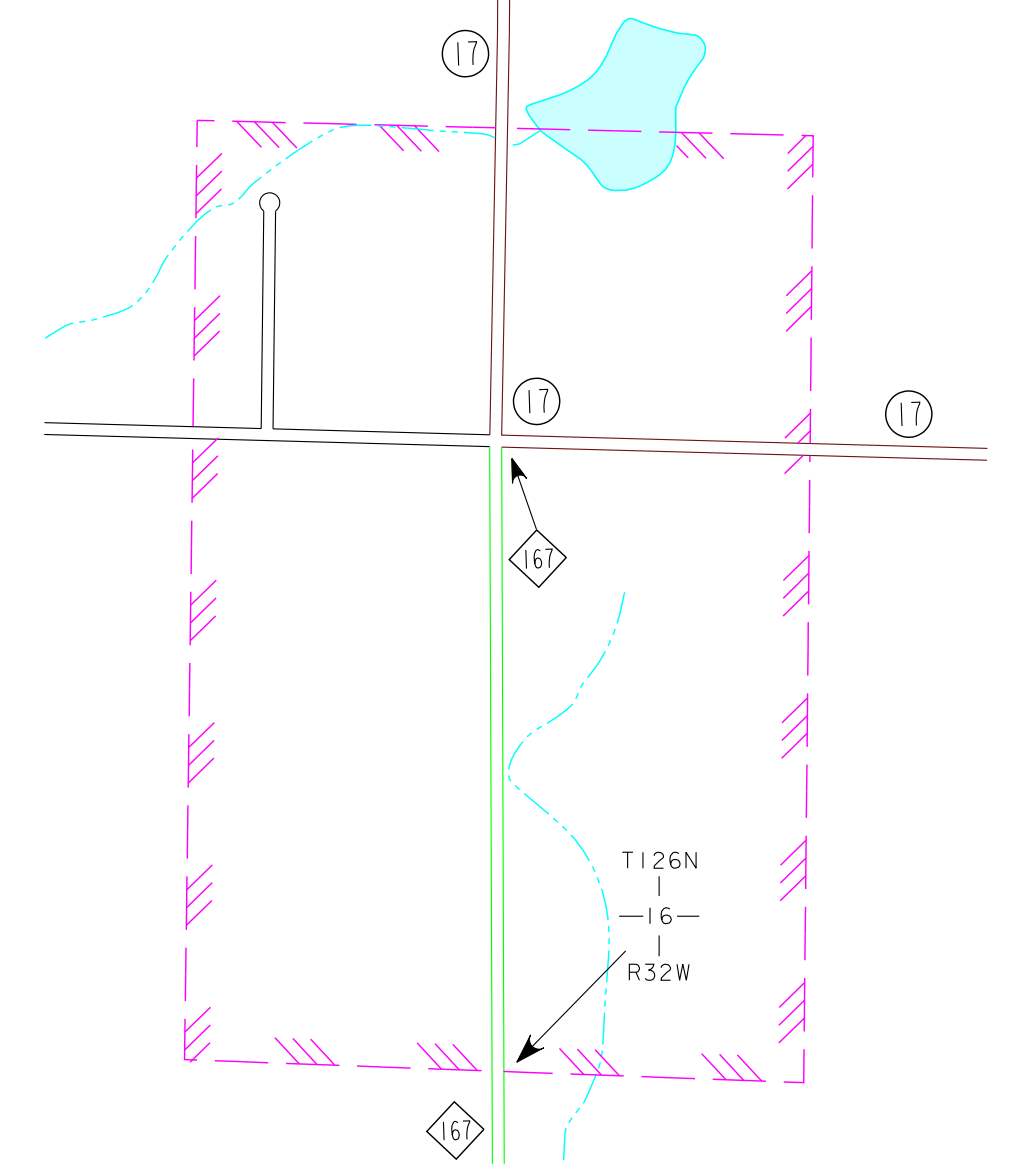
AVON

STEARNS COUNTY
POP. 1,242



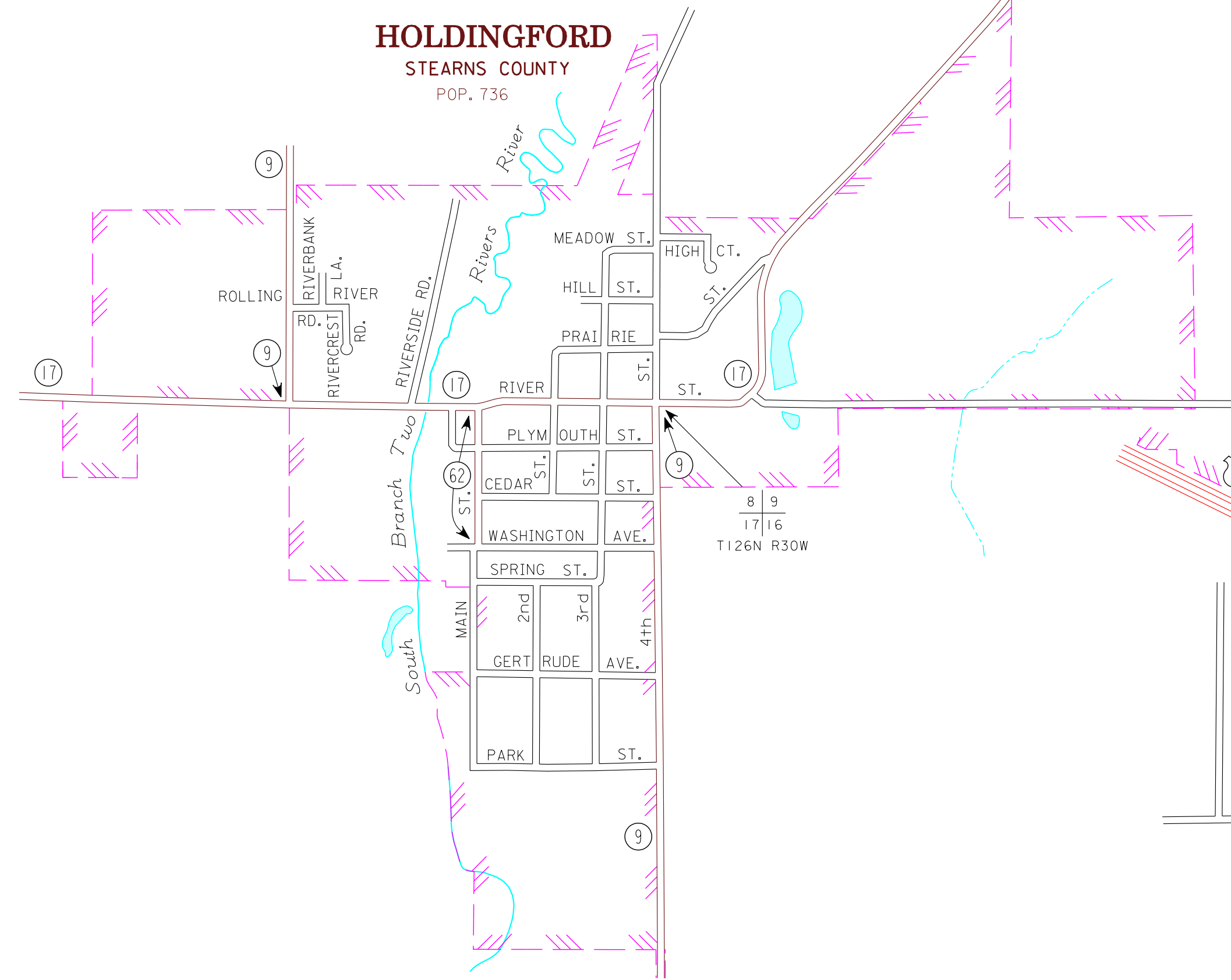
ST. ROSA

STEARNS COUNTY
POP. 44



HOLDINGFORD

STEARNS COUNTY
POP. 736



MUNICIPALITIES SHOWN ON THIS SHEET

- AVON
- ELROSA
- HOLDINGFORD
- LAKE HENRY
- PAYNESVILLE
- ST. ROSA

- CLEARWATER: SEE WRIGHT COUNTY SHEET 4 OF 6
- EDEN VALLEY: SEE MECKER COUNTY SHEET 1 OF 2

NOTE: 2000 U.S. CENSUS FIGURES SHOWN FOR ALL MUNICIPALITIES UNLESS OTHERWISE STATED.