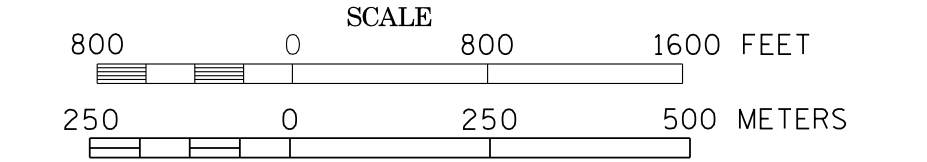
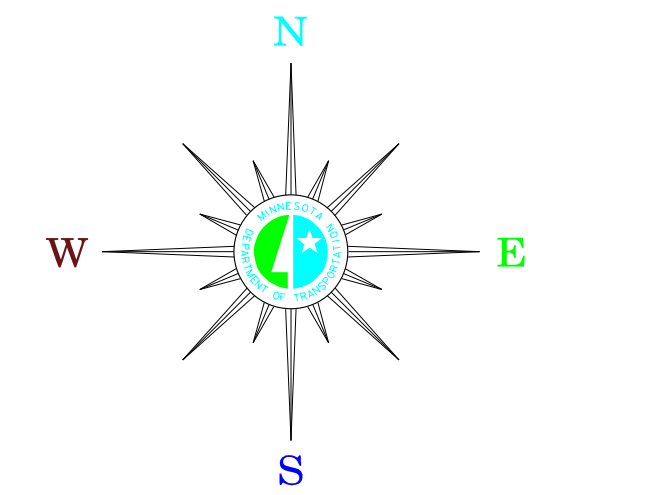


# MUNICIPALITIES OF NORMAN COUNTY

PREPARED BY THE  
MINNESOTA DEPARTMENT OF TRANSPORTATION  
OFFICE OF TRANSPORTATION DATA & ANALYSIS  
IN COOPERATION WITH  
U.S. DEPARTMENT OF TRANSPORTATION  
FEDERAL HIGHWAY ADMINISTRATION

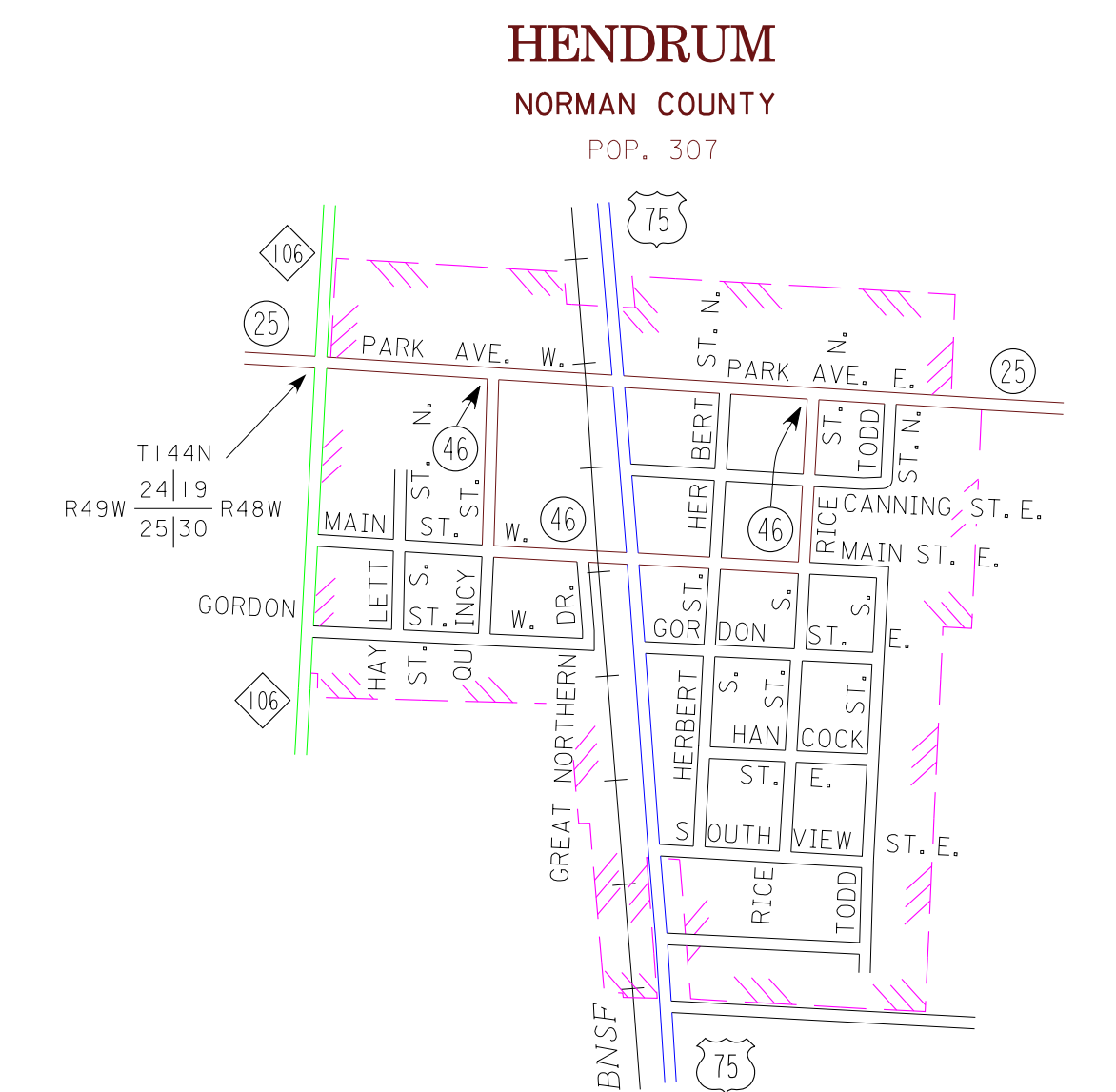
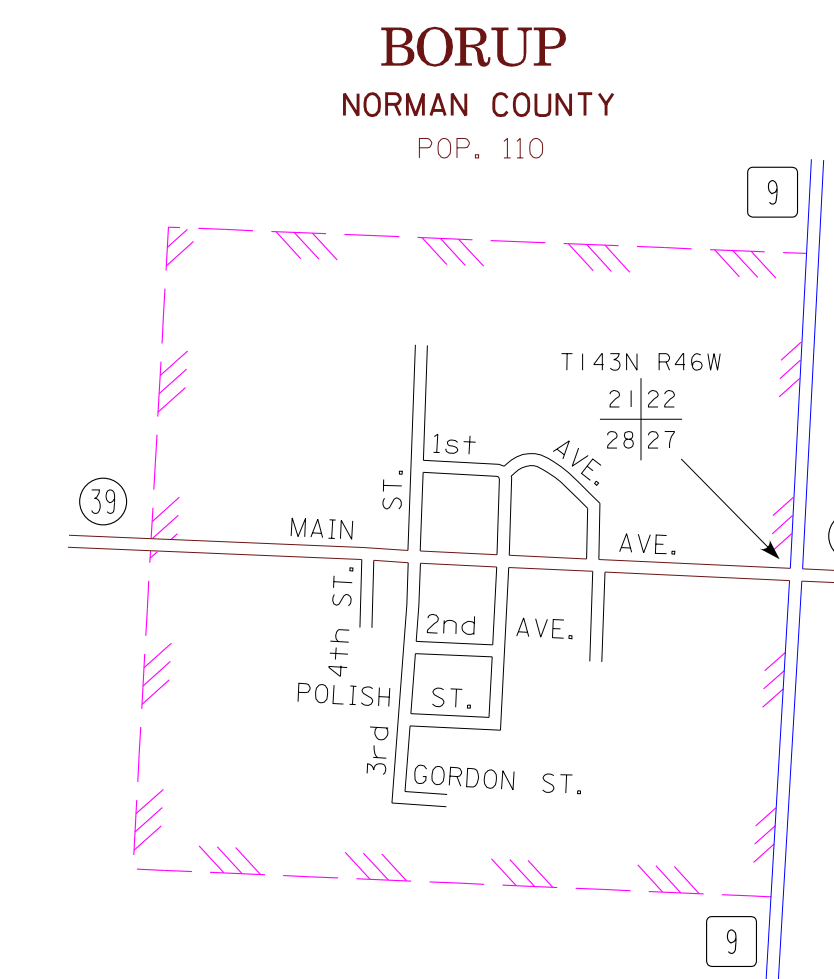
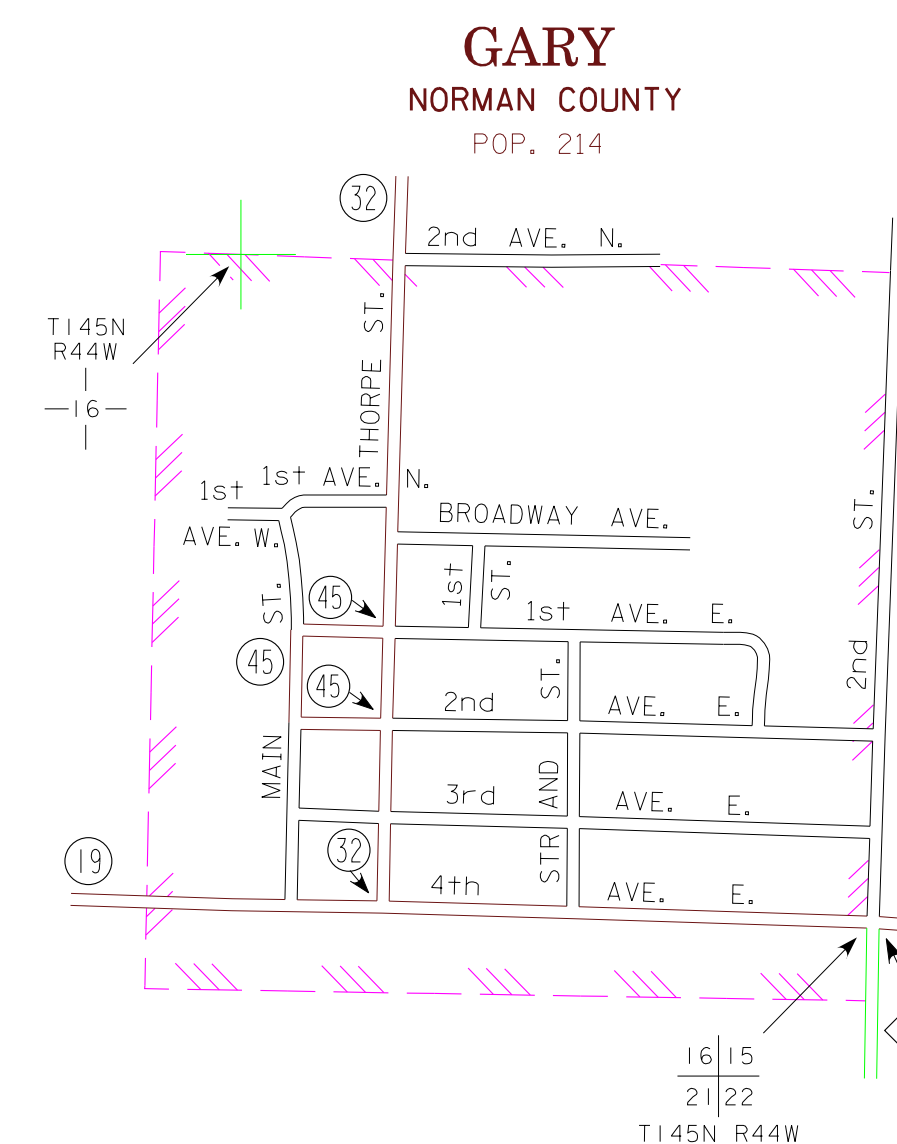
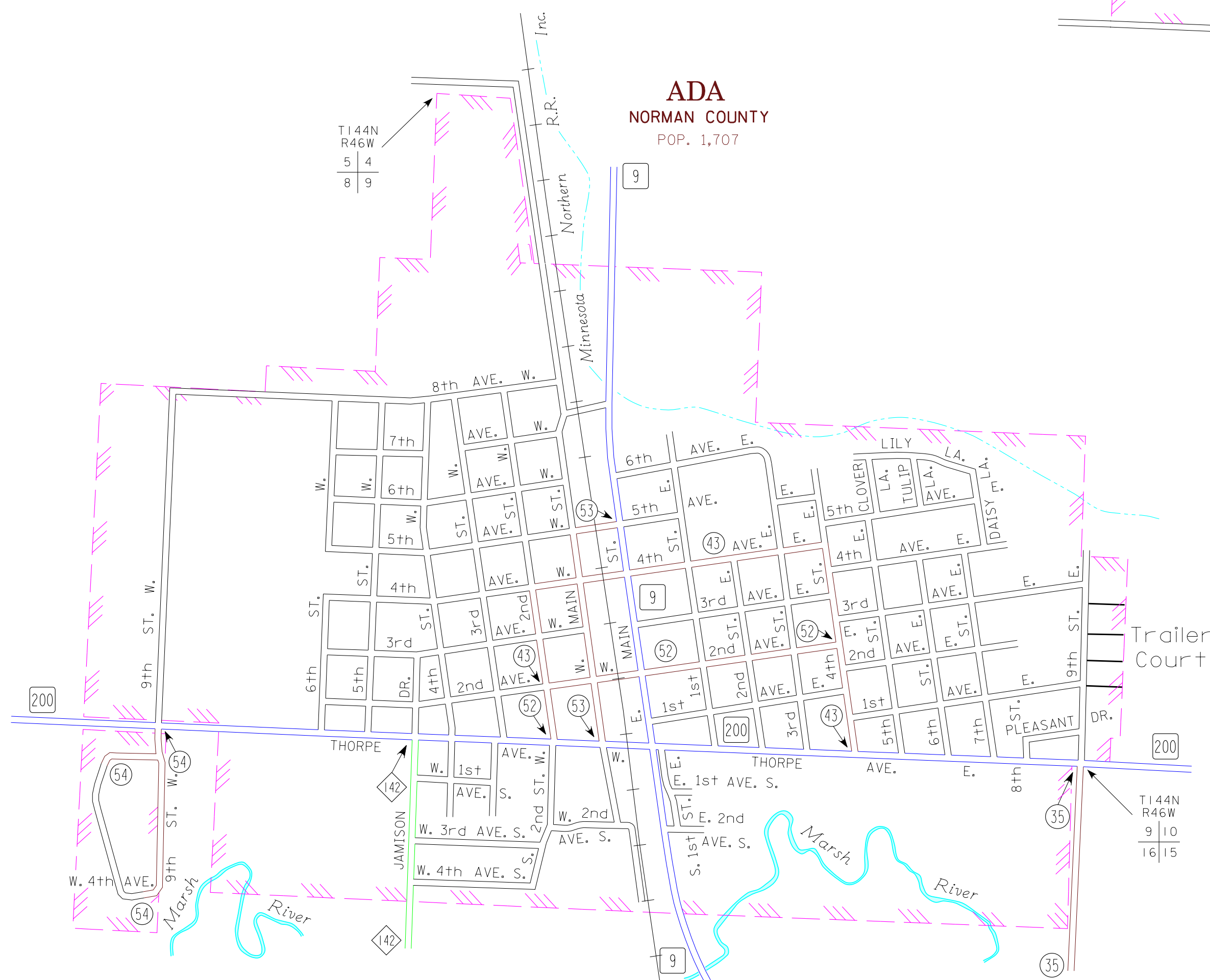
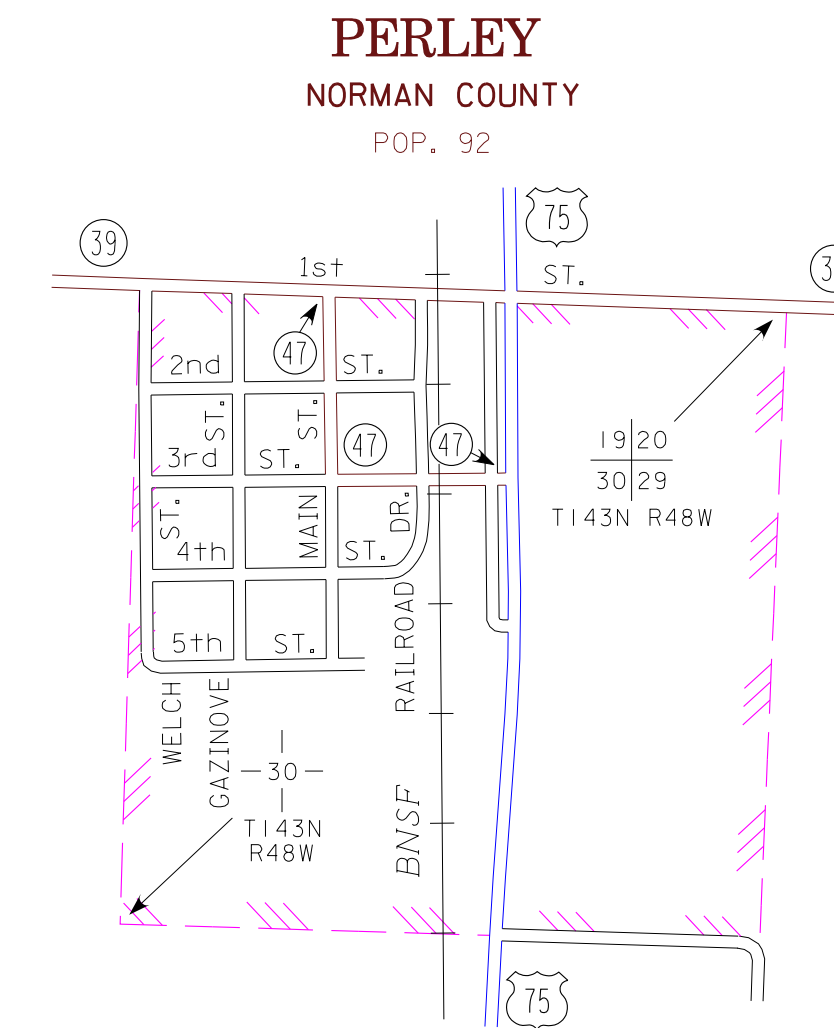
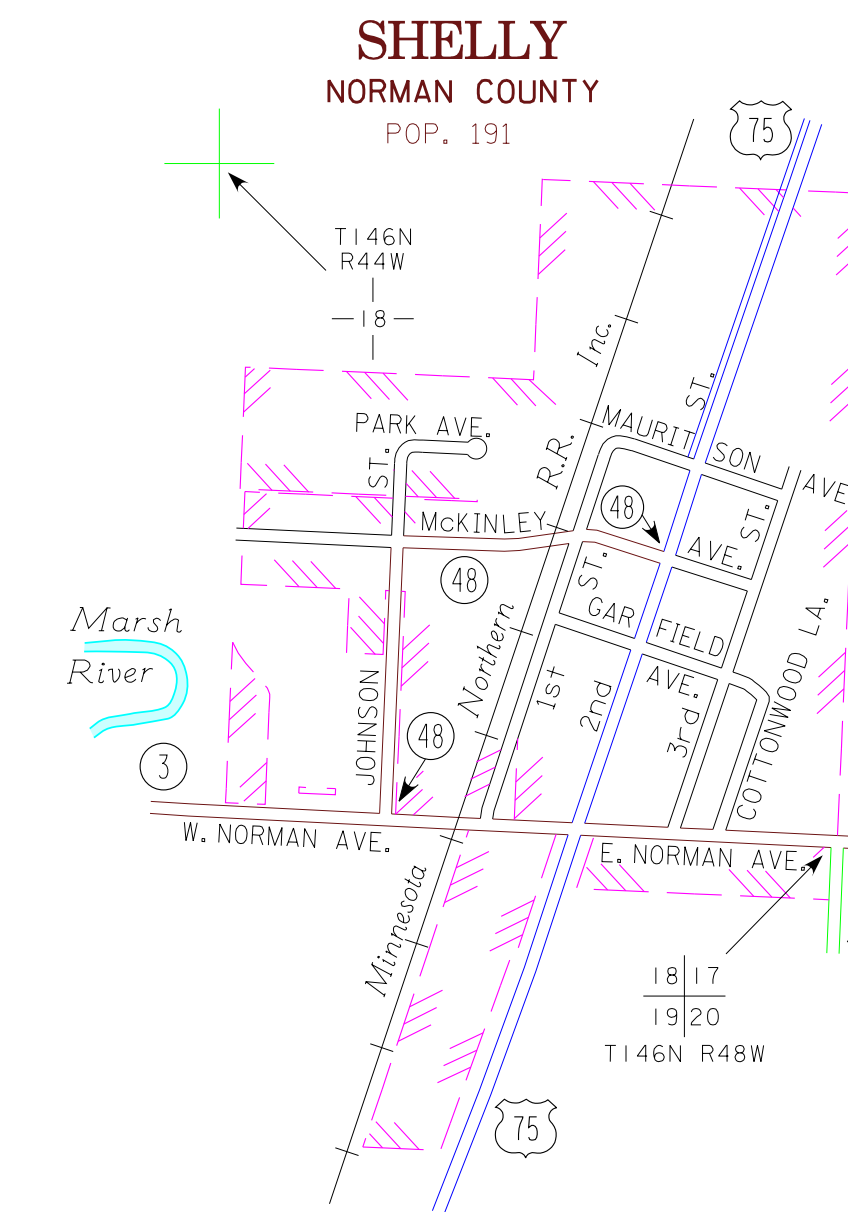
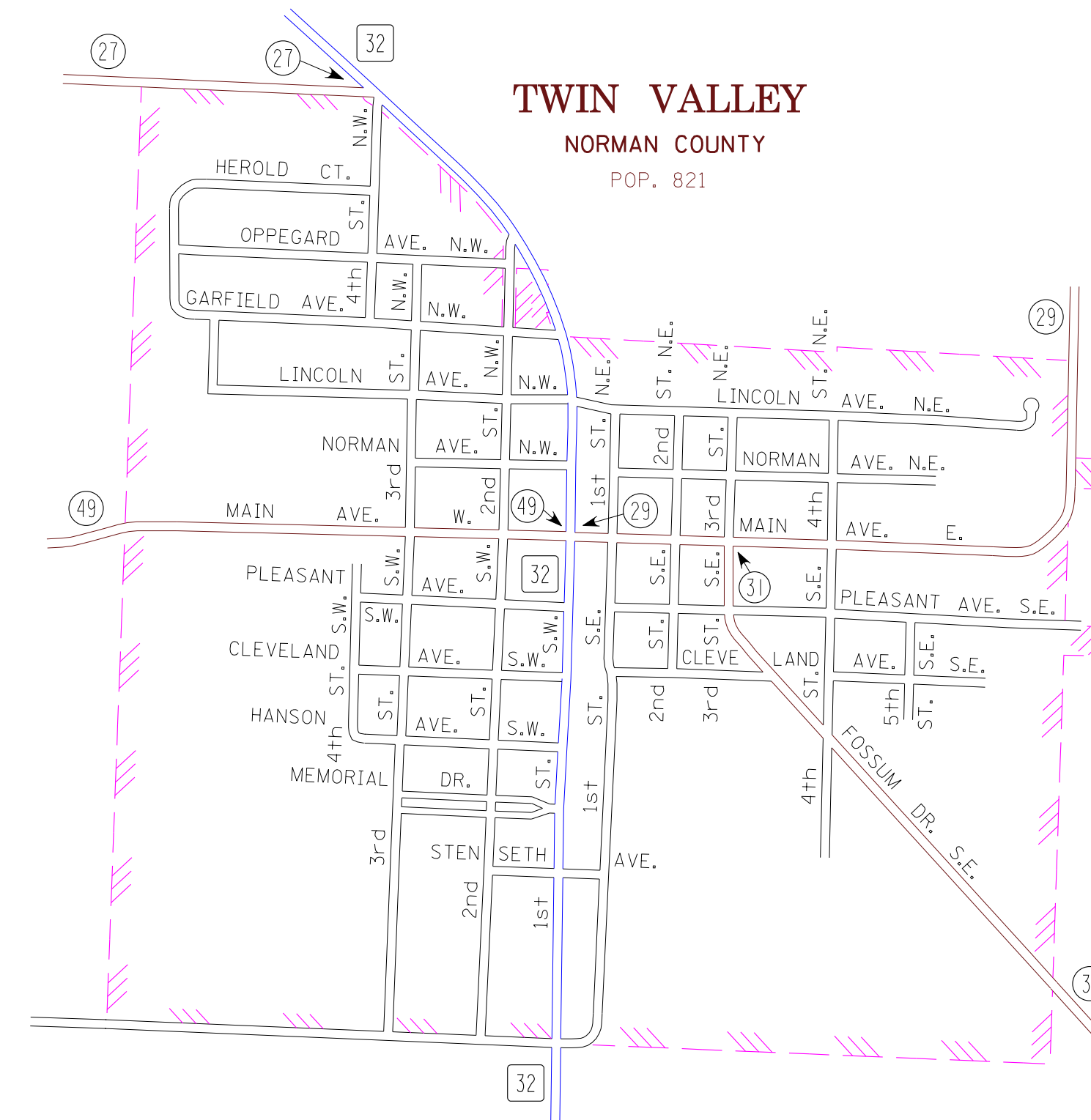
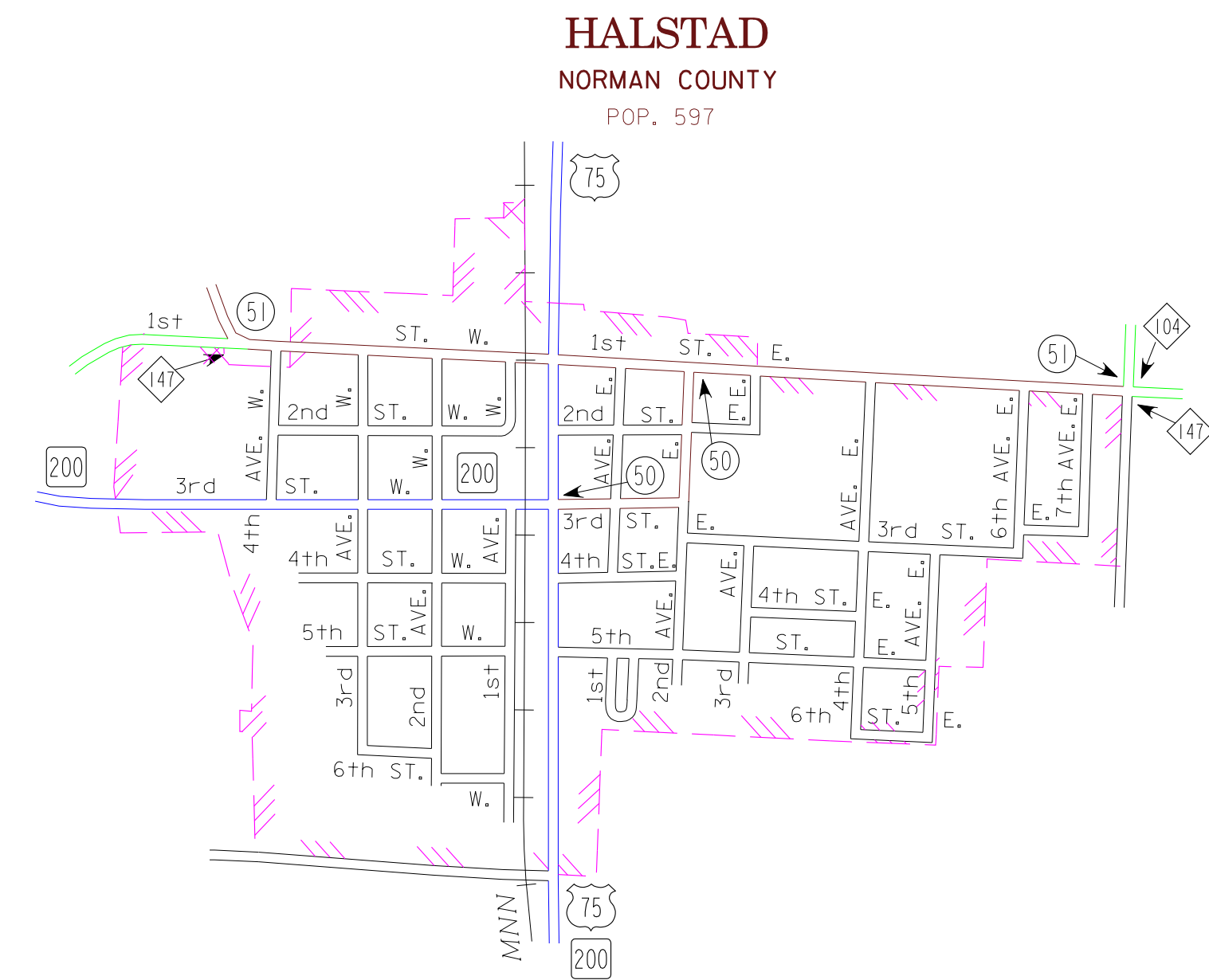


2011  
BASIC DATA - 2008



## LEGEND

- INTERSTATE TRUNK HIGHWAY..... (I-95)
- U.S. TRUNK HIGHWAY..... (75)
- STATE TRUNK HIGHWAY..... (35)
- COUNTY STATE AID HIGHWAY..... (25)
- COUNTY ROAD..... (32)
- PUBLIC ROAD..... (14)
- PRIVATE ROAD..... (15)
- CORPORATE LIMITS..... (---)



MUNICIPALITIES SHOWN  
ON THIS SHEET

- ADA
- BORUP
- GARY
- HALSTAD
- HENDRUM
- PERLEY
- SHELLY
- TWIN VALLEY

To request information from this document in an alternative format,  
call 651-366-2718 or 1-800-657-3774 (Greater Minnesota);  
711 or 1-800-627-3539 (Minnesota Relay). You may also send  
an e-mail to ADRequest.dot@state.mn.us.  
(Please request at least one week in advance.)

NOTE: 2010 U.S. CENSUS FIGURES SHOWN FOR ALL MUNICIPALITIES UNLESS OTHERWISE STATED.