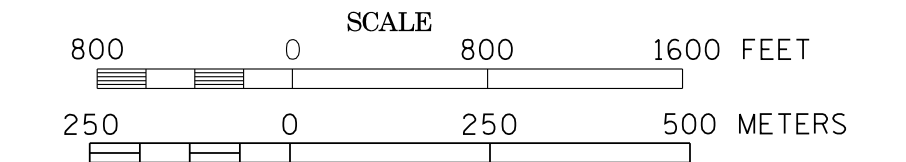
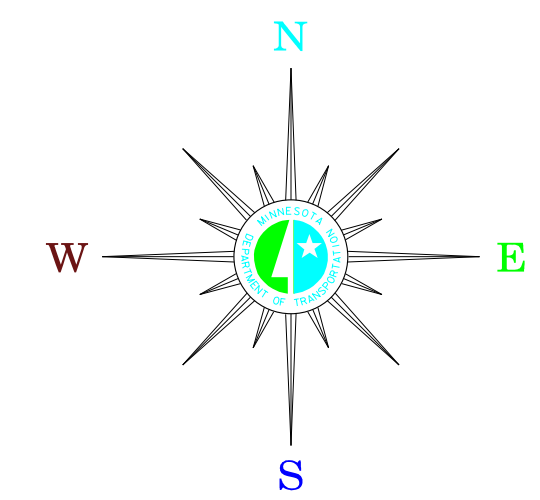


MUNICIPALITIES OF MURRAY CO.

PREPARED BY THE
MINNESOTA DEPARTMENT OF TRANSPORTATION
 OFFICE OF TRANSPORTATION DATA & ANALYSIS
 IN COOPERATION WITH
U.S. DEPARTMENT OF TRANSPORTATION
 FEDERAL HIGHWAY ADMINISTRATION

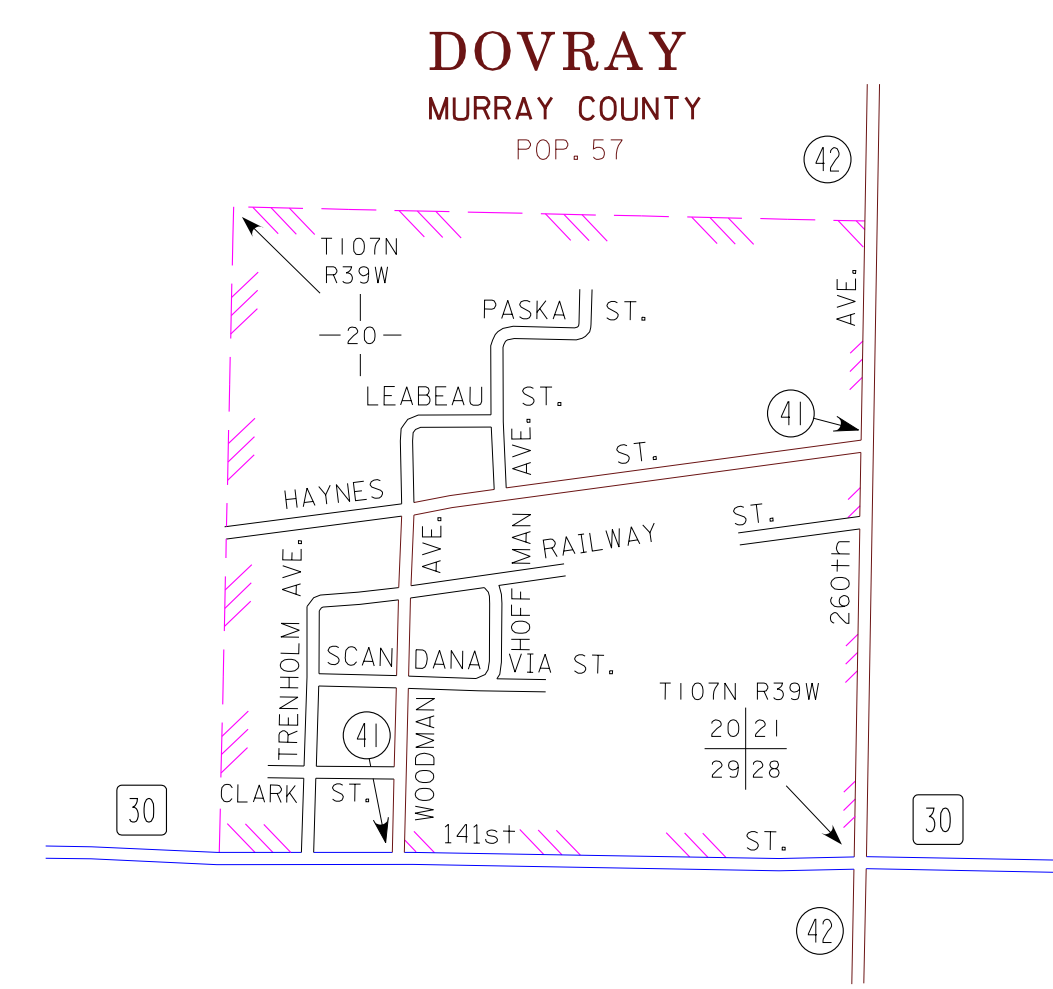
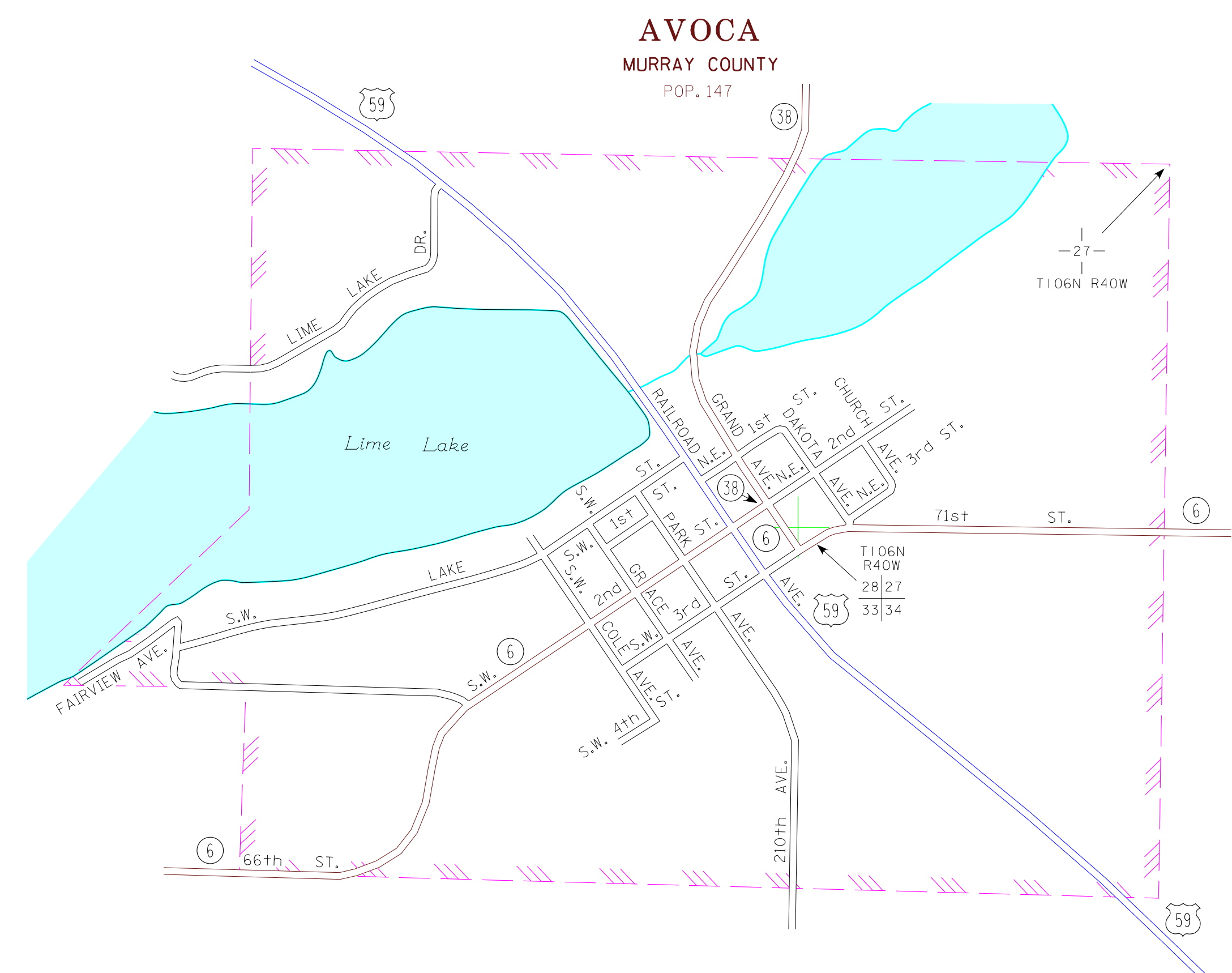
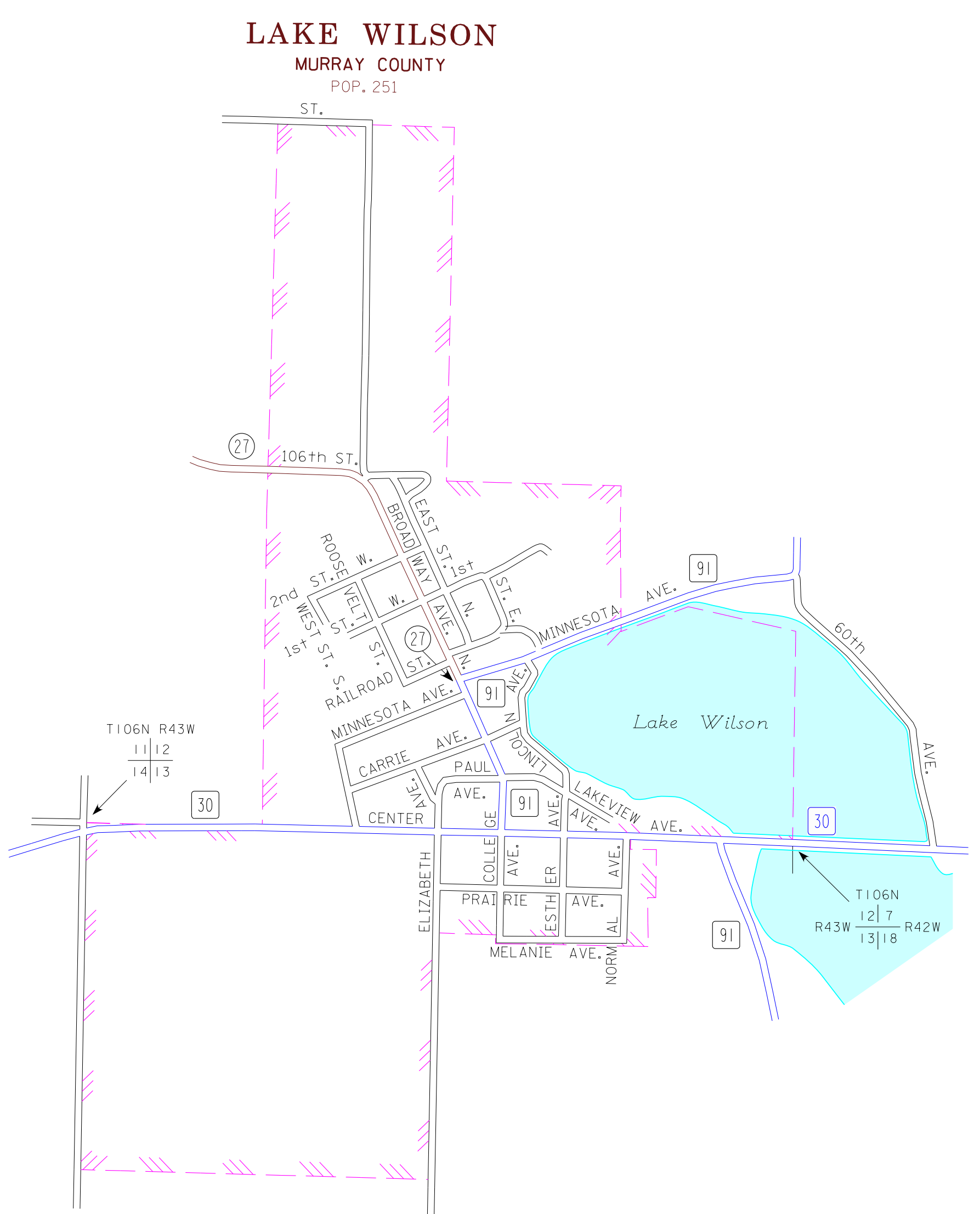
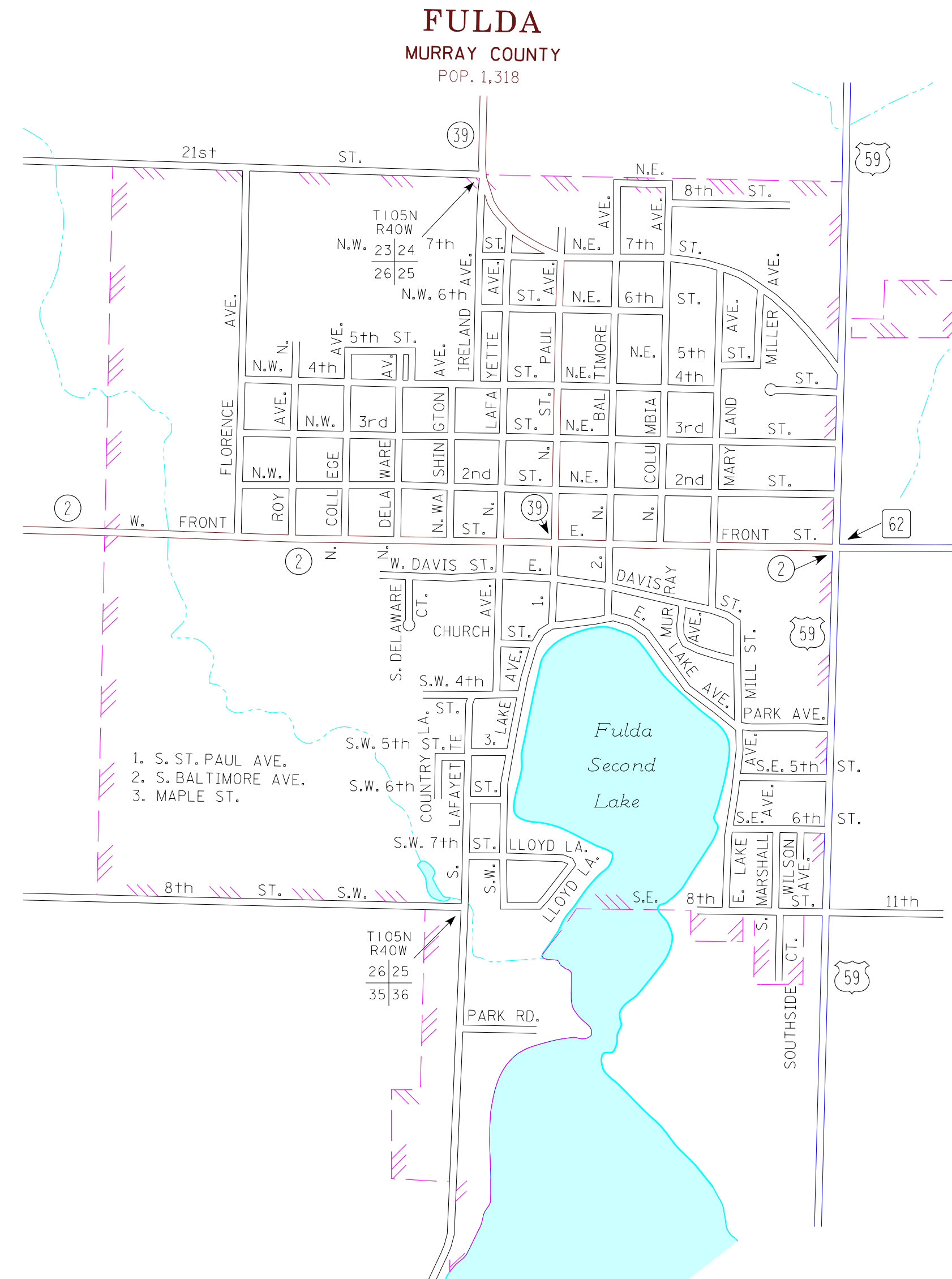
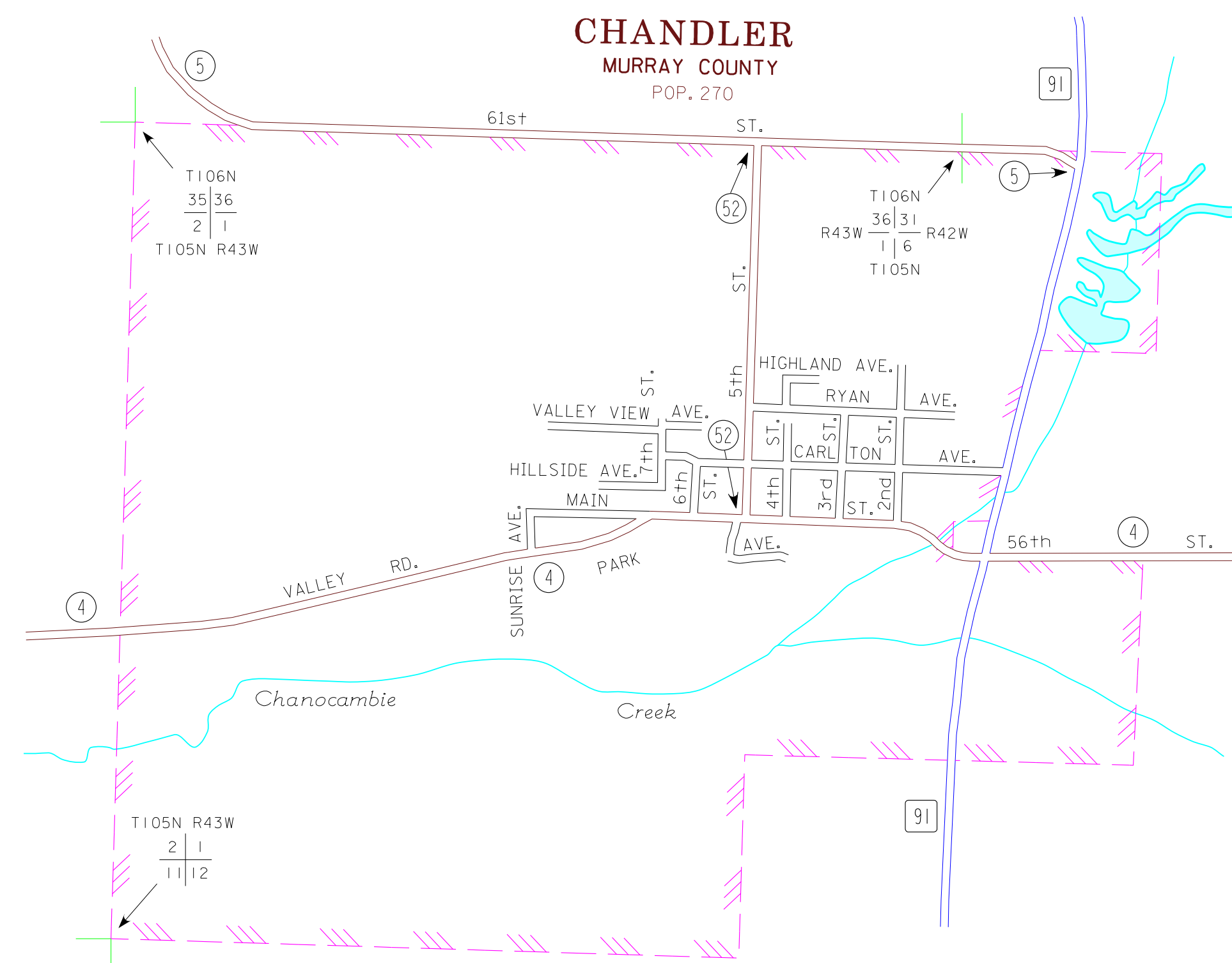


2011
 BASIC DATA - 2009



LEGEND

- INTERSTATE TRUNK HIGHWAY..... (35)
- U.S. TRUNK HIGHWAY..... (10)
- STATE TRUNK HIGHWAY..... (55)
- COUNTY STATE AID HIGHWAY..... (23)
- COUNTY ROAD..... (15)
- PUBLIC ROAD
- PRIVATE ROAD
- CORPORATE LIMITS.....



- MUNICIPALITIES SHOWN ON THIS SHEET
- AVOCA
 - CHANDLER
 - DOVRAY
 - FULDA
 - LAKE WILSON

To request information from this document in an alternative format, call 651-366-4718 or 1-800-657-3774 (Greater Minnesota); 711 or 1-800-627-3529 (Minnesota Relay). You may also send an e-mail to ADRequest.dot@state.mn.us. (Please request at least one week in advance).

NOTE: 2010 U.S. CENSUS FIGURES SHOWN FOR ALL MUNICIPALITIES UNLESS OTHERWISE STATED.