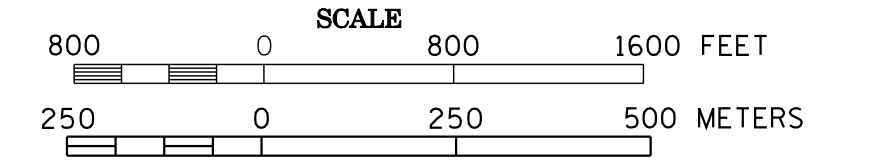
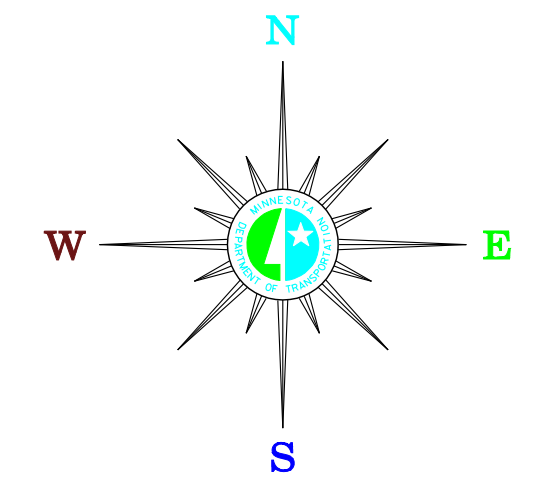


MUNICIPALITIES OF MARSHALL CO.

PREPARED BY THE
MINNESOTA DEPARTMENT OF TRANSPORTATION
OFFICE OF TRANSPORTATION DATA & ANALYSIS
IN COOPERATION WITH
U.S. DEPARTMENT OF TRANSPORTATION
FEDERAL HIGHWAY ADMINISTRATION



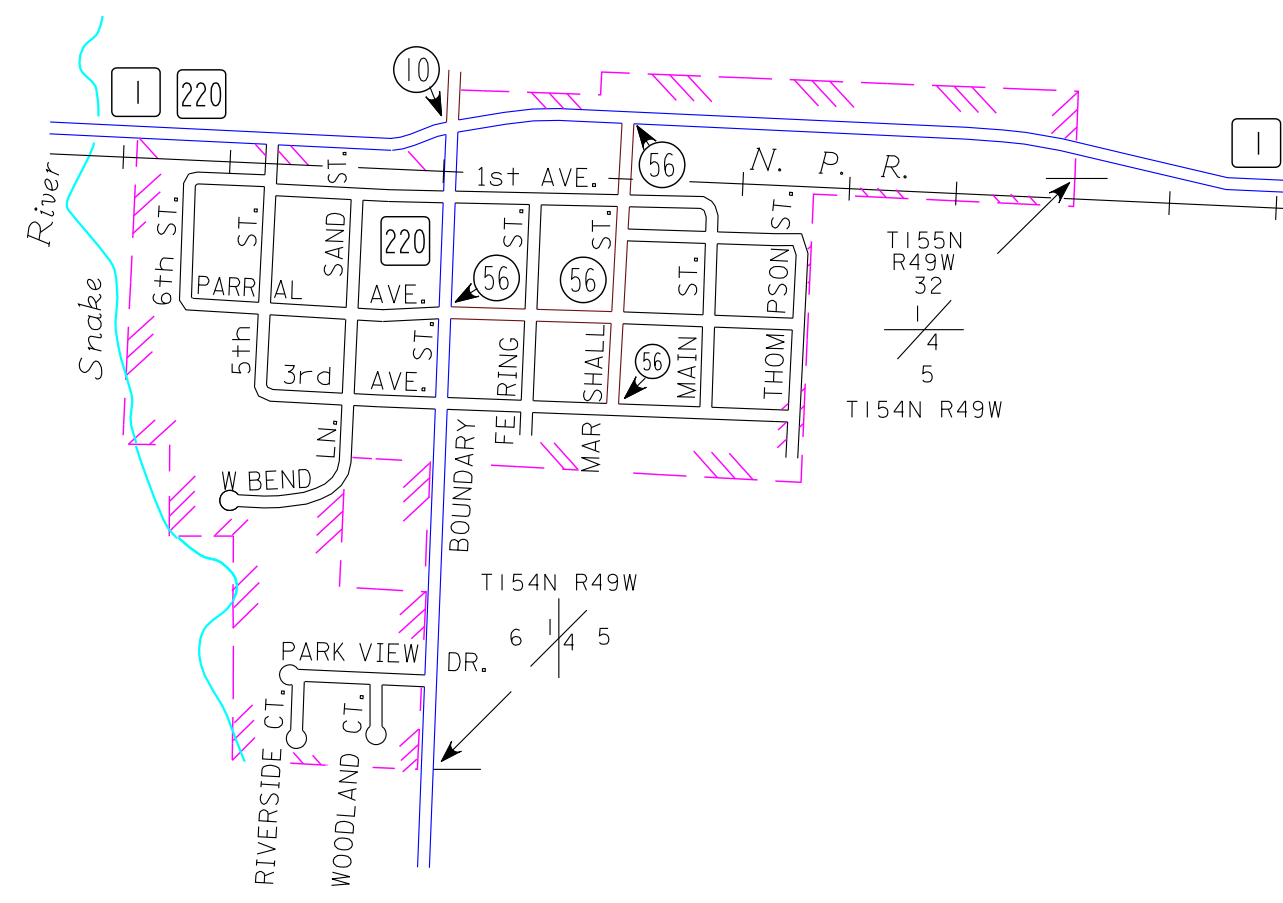
2009
BASIC DATA - 1975



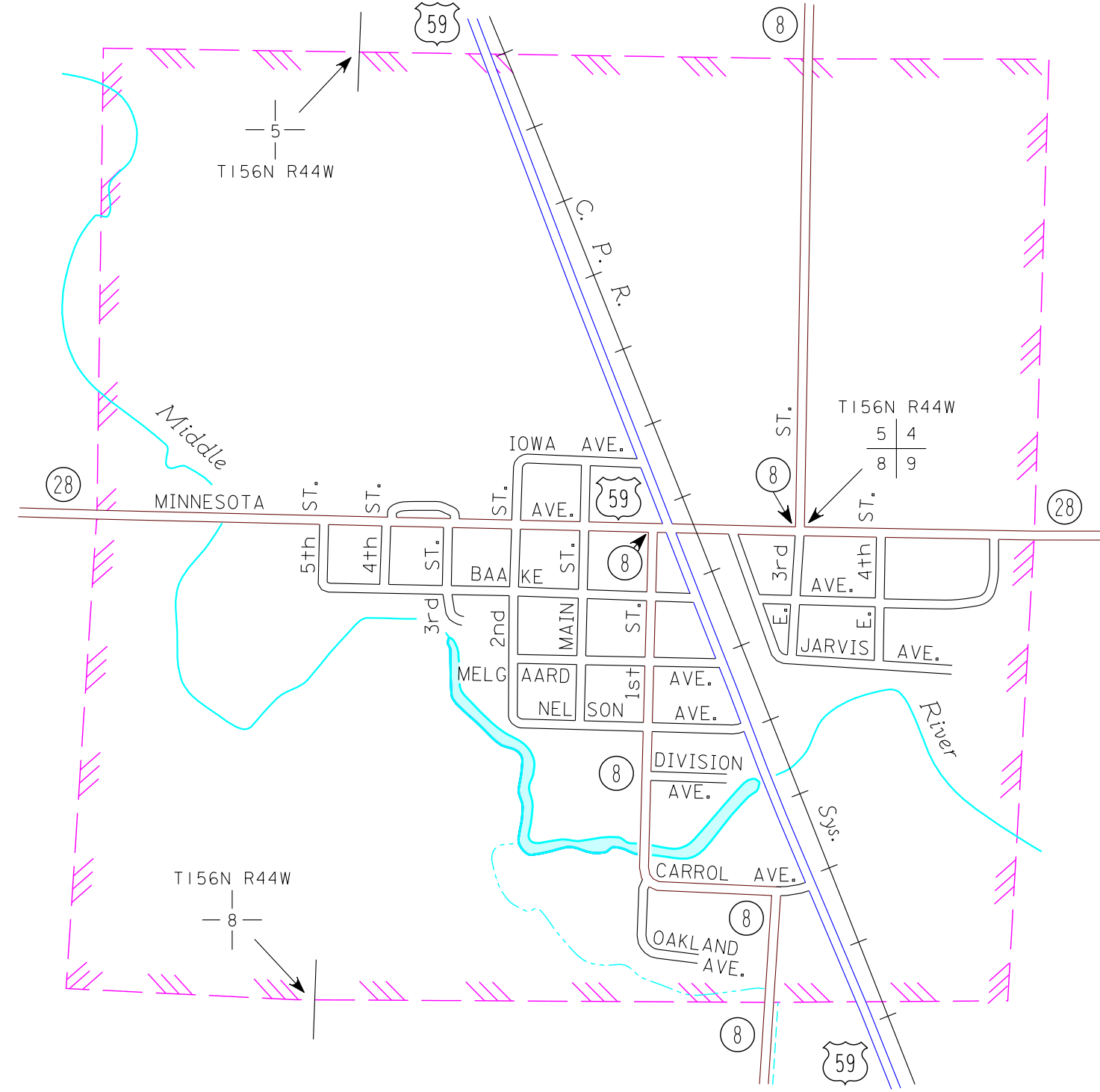
LEGEND

- INTERSTATE TRUNK HIGHWAY..... (35)
- U.S. TRUNK HIGHWAY..... (10)
- STATE TRUNK HIGHWAY..... (55)
- COUNTY STATE AID HIGHWAY..... (23)
- COUNTY ROAD..... (15)
- PUBLIC ROAD.....
- PRIVATE ROAD.....
- CORPORATE LIMITS.....

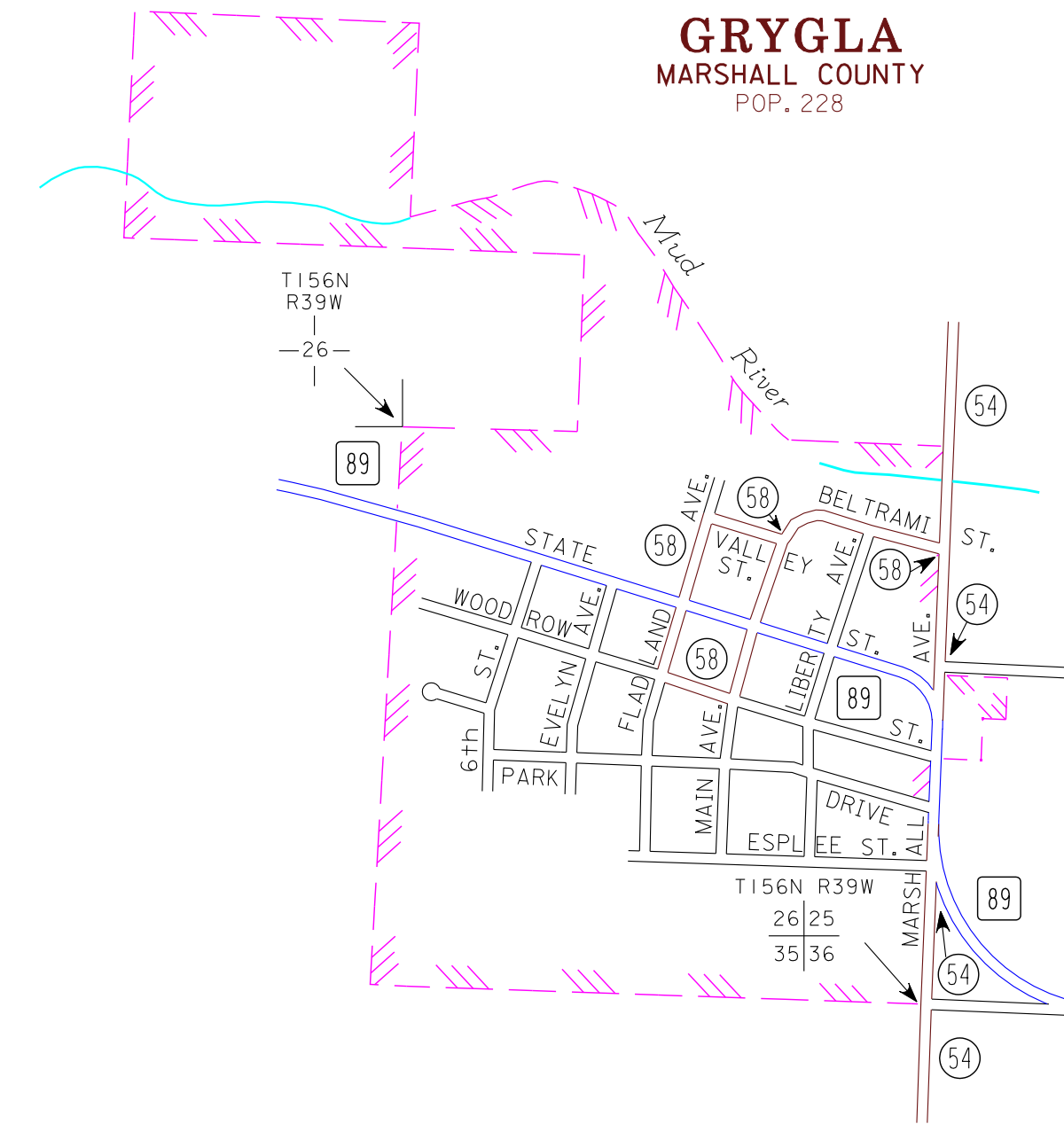
ALVARADO MARSHALL COUNTY POP. 371



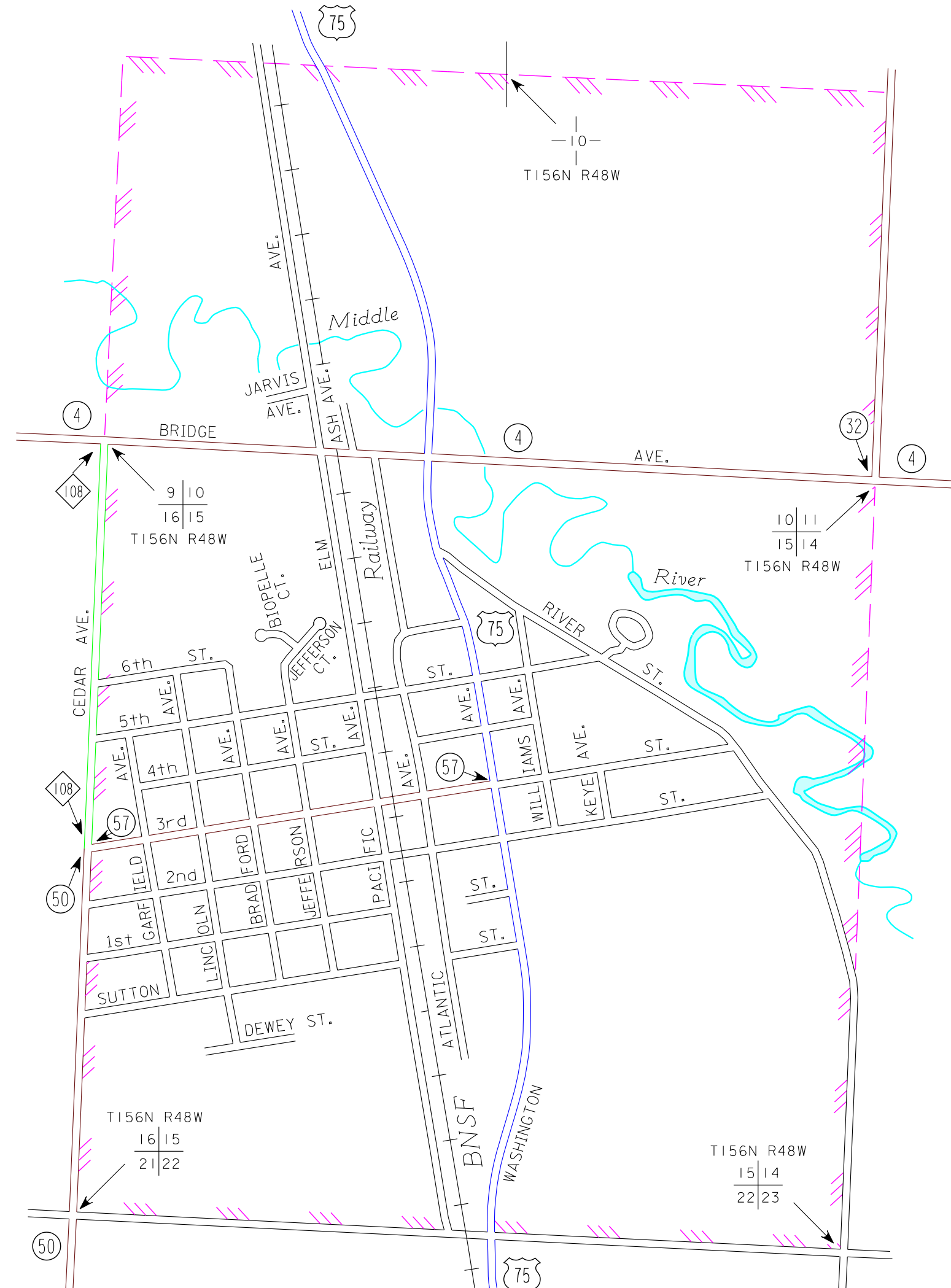
NEWFOLDEN MARSHALL COUNTY POP. 362



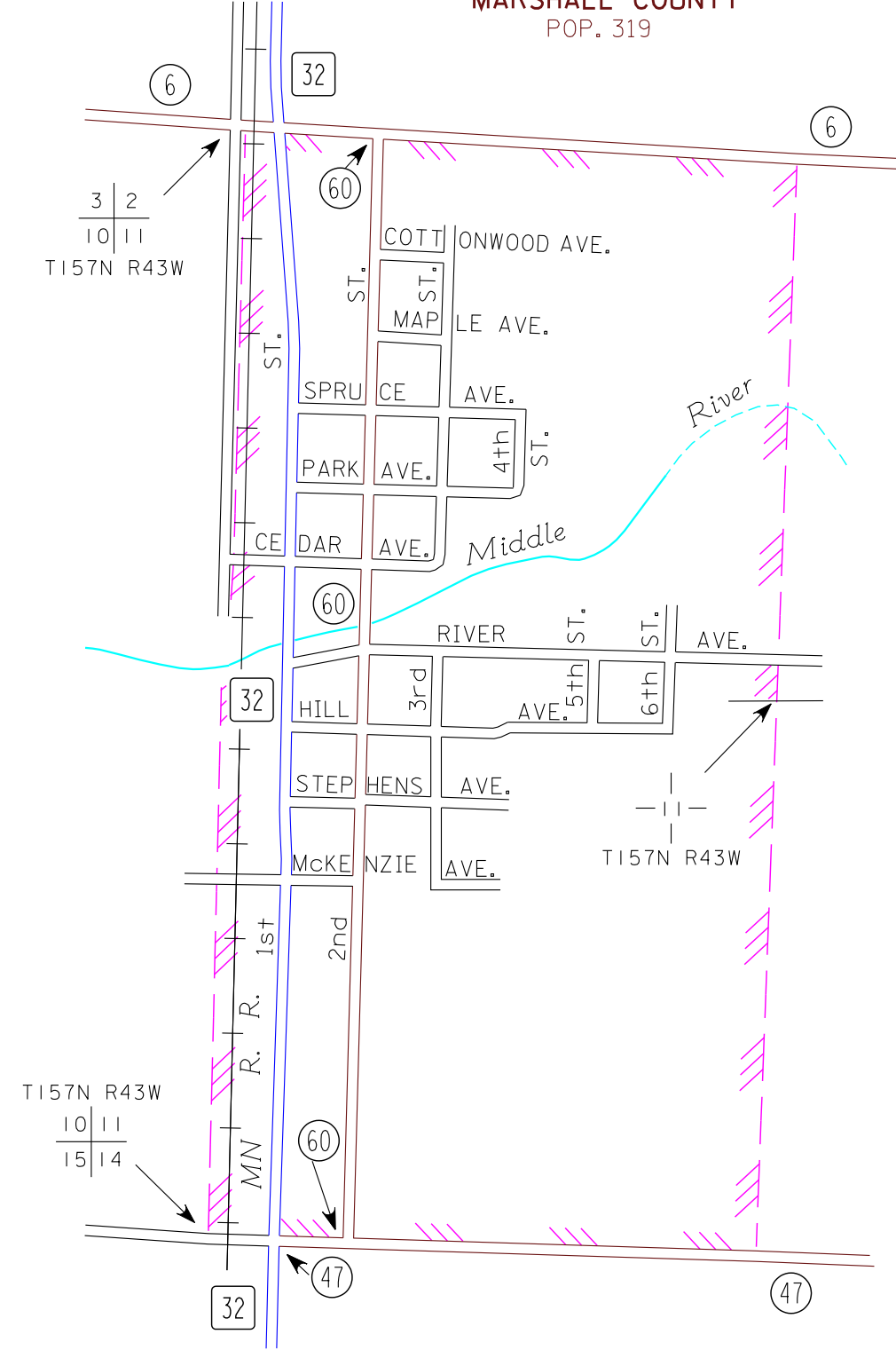
GRYGLA MARSHALL COUNTY POP. 228



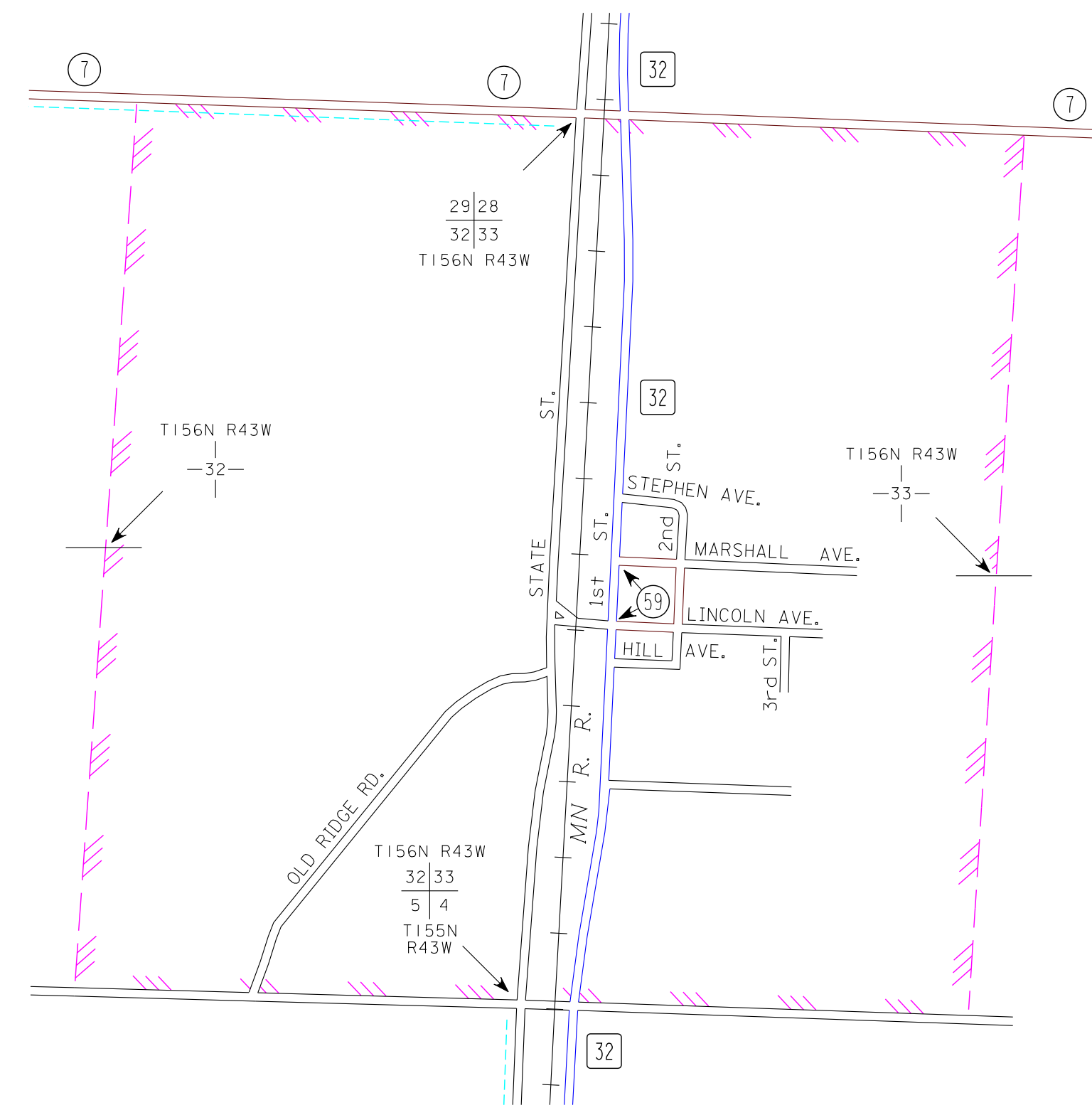
ARGYLE MARSHALL COUNTY POP. 656



MIDDLE RIVER MARSHALL COUNTY POP. 319



HOLT MARSHALL COUNTY POP. 89



- MUNICIPALITIES SHOWN
ON THIS SHEET
- ALVARADO
 - ARGYLE
 - GRYGLA
 - HOLT
 - MIDDLE RIVER
 - NEWFOLDEN

NOTE: 2000 U.S. CENSUS FIGURES SHOWN FOR ALL MUNICIPALITIES UNLESS OTHERWISE STATED.