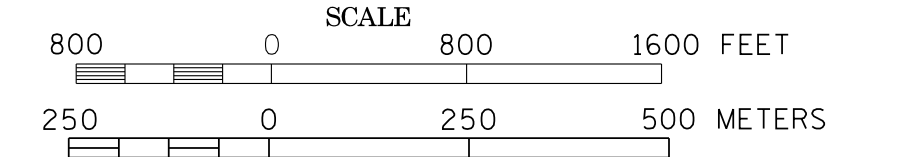


HOFFMAN
GRANT COUNTY
POP. 681

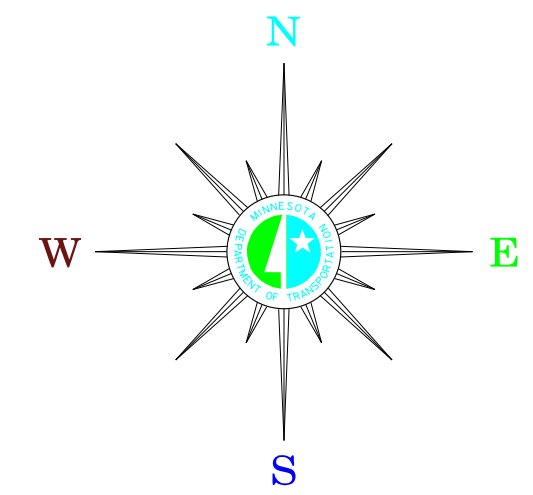
WENDELL
GRANT COUNTY
POP. 167

MUNICIPALITIES OF
GRANT CO.

PREPARED BY THE
MINNESOTA DEPARTMENT OF TRANSPORTATION
OFFICE OF TRANSPORTATION DATA & ANALYSIS
IN COOPERATION WITH
U.S. DEPARTMENT OF TRANSPORTATION
FEDERAL HIGHWAY ADMINISTRATION

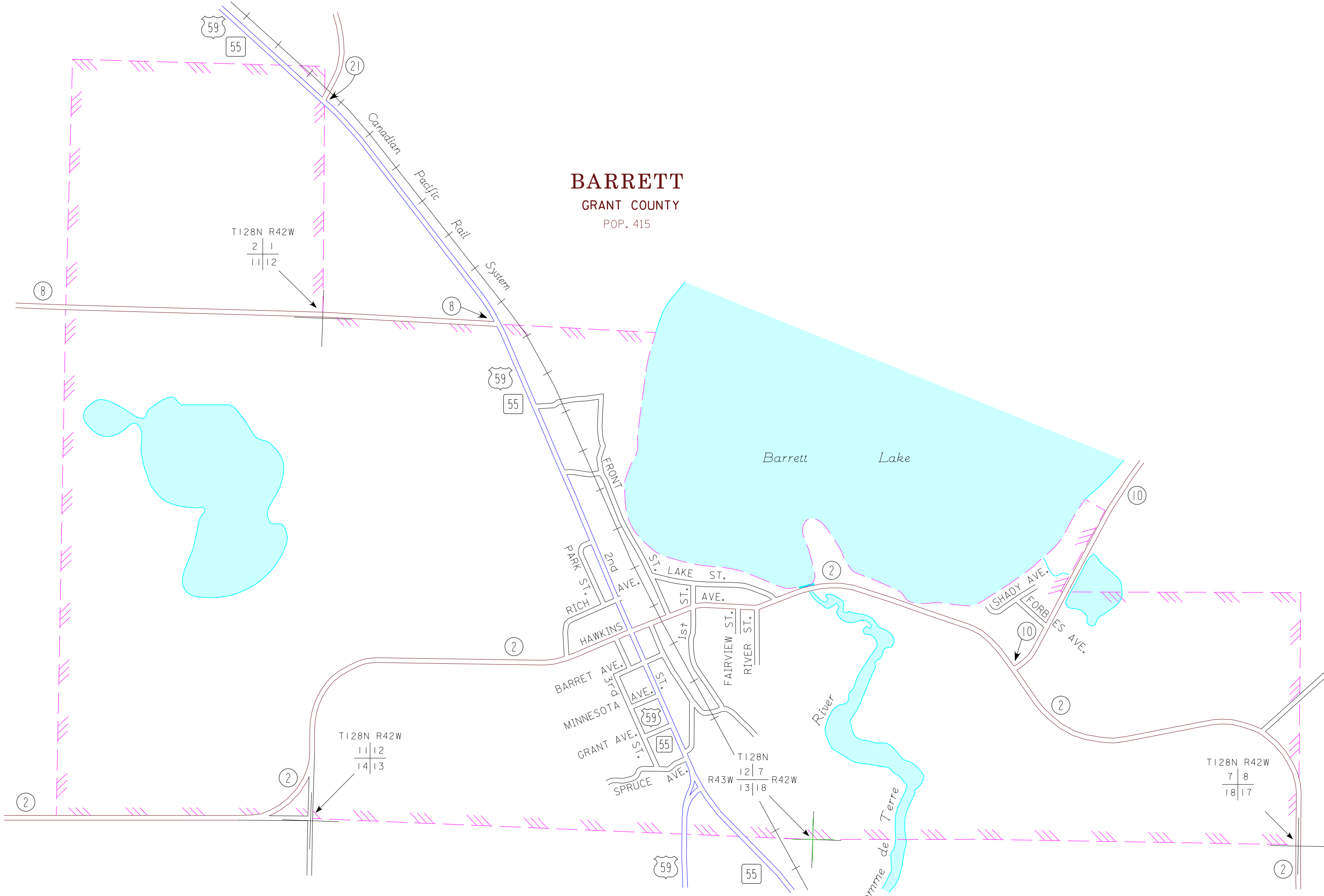
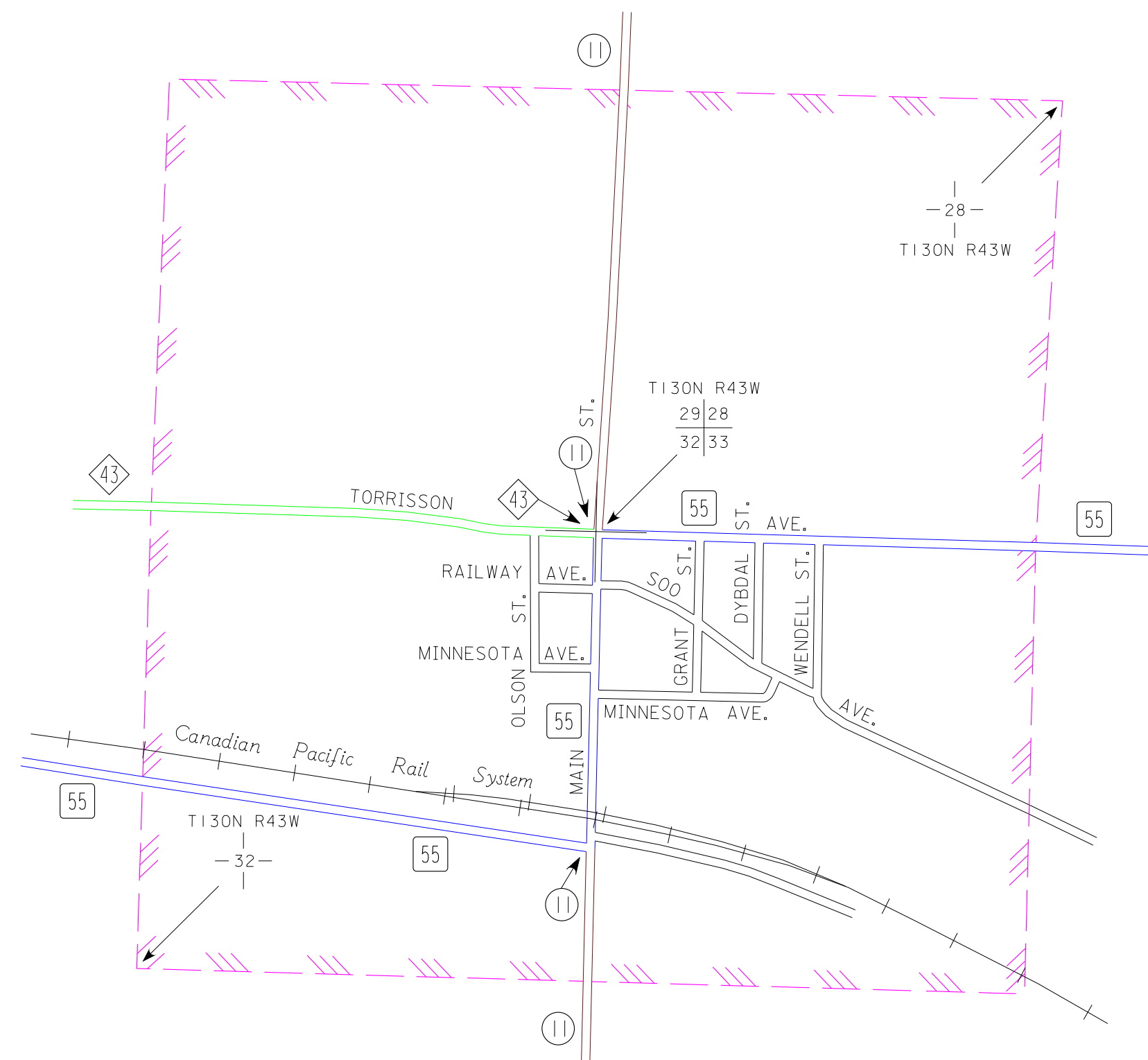
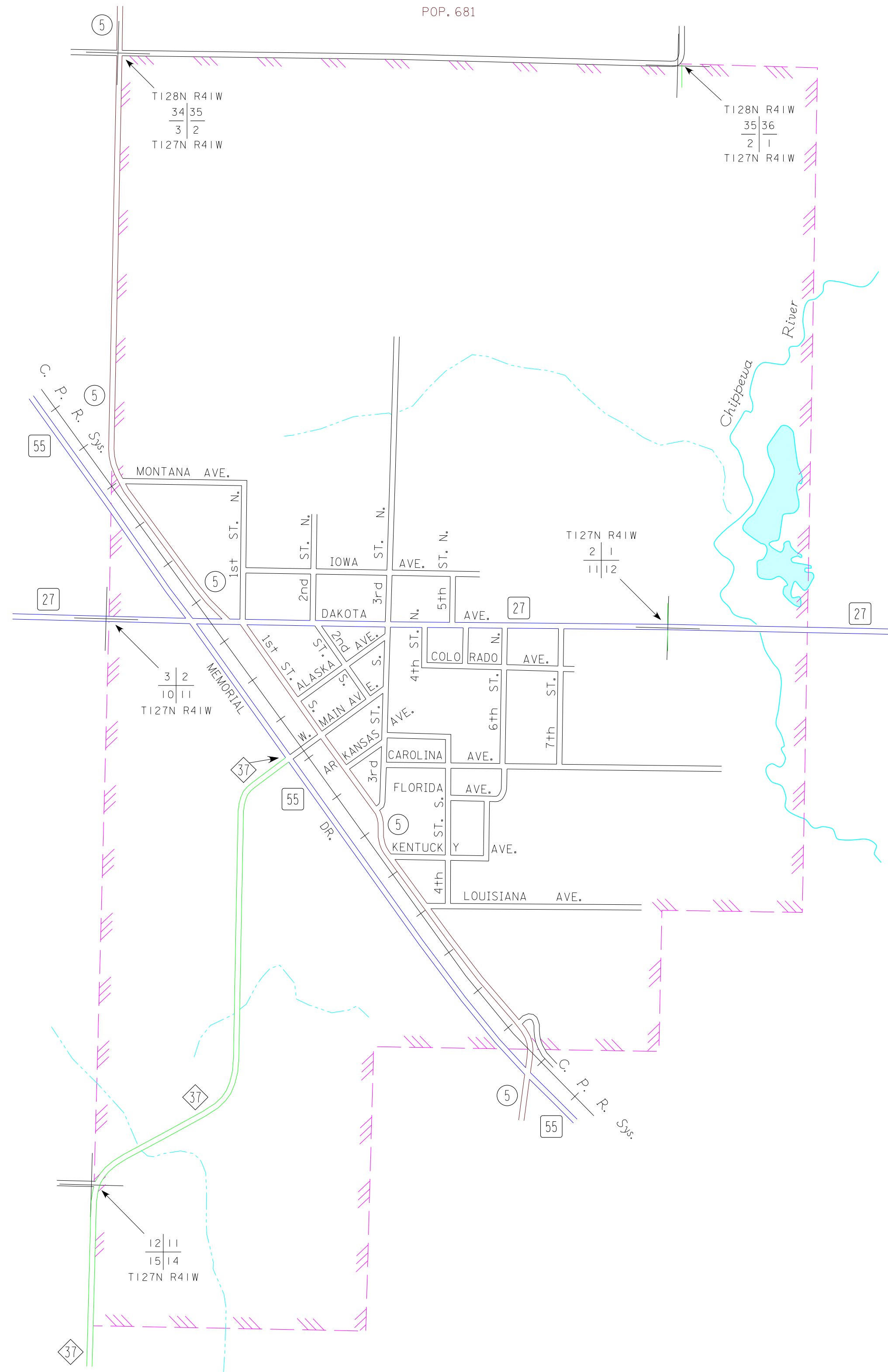


2011
BASIC DATA - 2009



LEGEND

- INTERSTATE TRUNK HIGHWAY..... (I-35)
- U.S. TRUNK HIGHWAY..... (US-10)
- STATE TRUNK HIGHWAY..... (ST-55)
- COUNTY STATE AID HIGHWAY..... (CSA-23)
- COUNTY ROAD..... (C-15)
- PUBLIC ROAD.....
- PRIVATE ROAD.....
- CORPORATE LIMITS.....



MUNICIPALITIES SHOWN
ON THIS SHEET
BARRETT
HOFFMAN
WENDELL

To request information from this document in an alternative format, call 651-366-4718 or 1-800-657-3774 (Greater Minnesota); 711 or 1-800-627-3529 (Minnesota Relay). You may also send an e-mail to ADArequest.d@state.mn.us. (Please request at least one week in advance).

NOTE: 2010 U.S. CENSUS FIGURES SHOWN FOR ALL MUNICIPALITIES UNLESS OTHERWISE STATED.