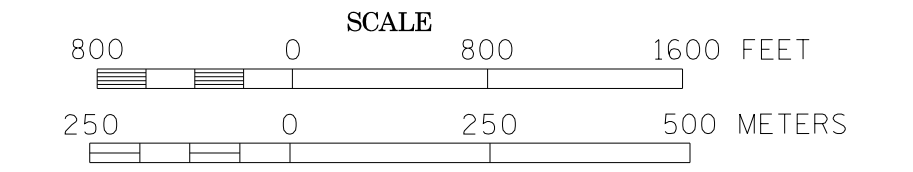
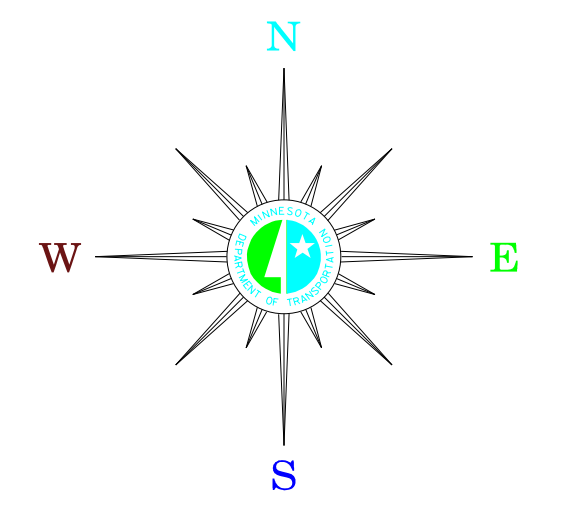


MUNICIPALITIES OF  
**CASS CO.**

PREPARED BY THE  
MINNESOTA DEPARTMENT OF TRANSPORTATION  
OFFICE OF TRANSPORTATION DATA & ANALYSIS  
IN COOPERATION WITH  
U.S. DEPARTMENT OF TRANSPORTATION  
FEDERAL HIGHWAY ADMINISTRATION



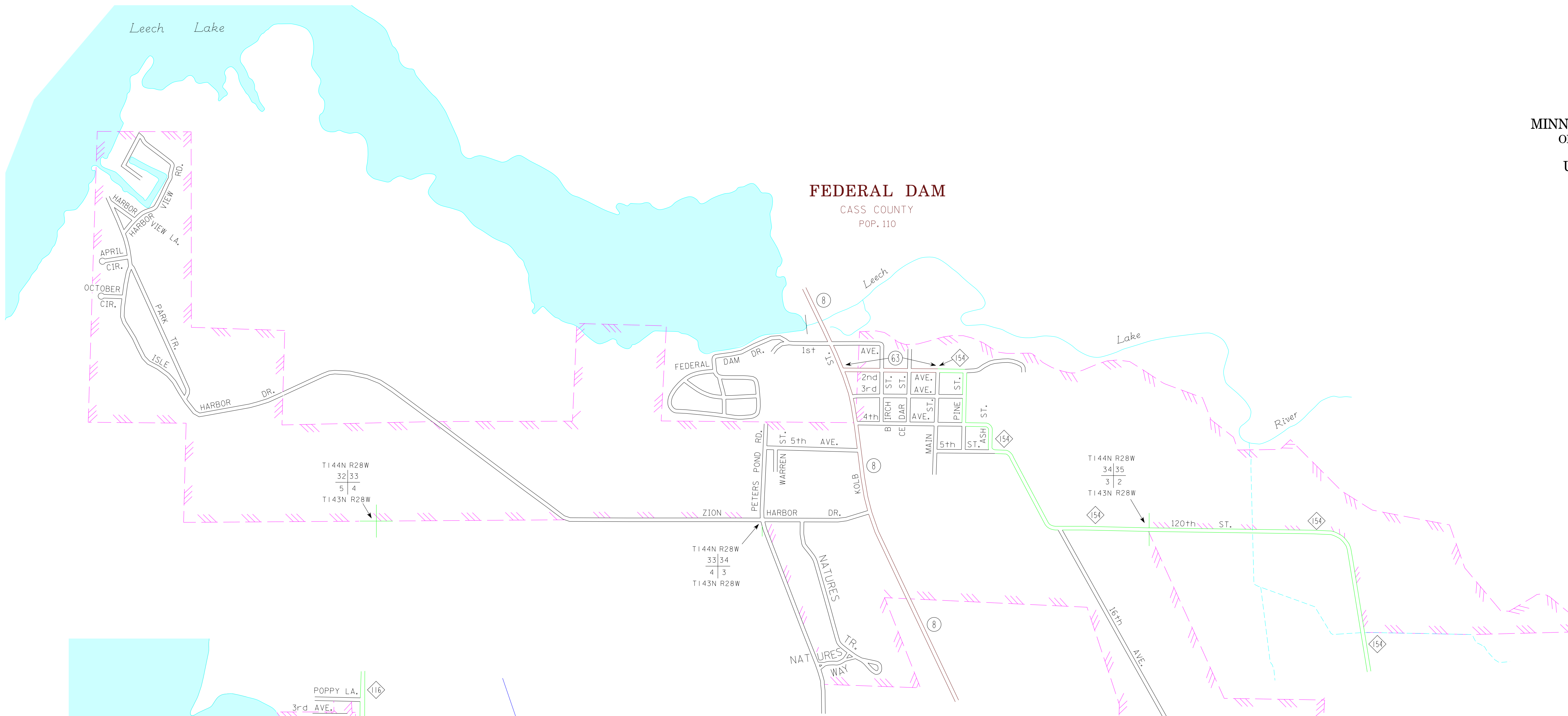
2011  
BASIC DATA - 2010



**LEGEND**

- INTERSTATE TRUNK HIGHWAY..... (35)
- U.S. TRUNK HIGHWAY..... (10)
- STATE TRUNK HIGHWAY..... (55)
- COUNTY STATE AID HIGHWAY..... (23)
- COUNTY ROAD..... (15)
- PUBLIC ROAD.....
- PRIVATE ROAD.....
- CORPORATE LIMITS.....

**FEDERAL DAM**  
CASS COUNTY  
POP. 110



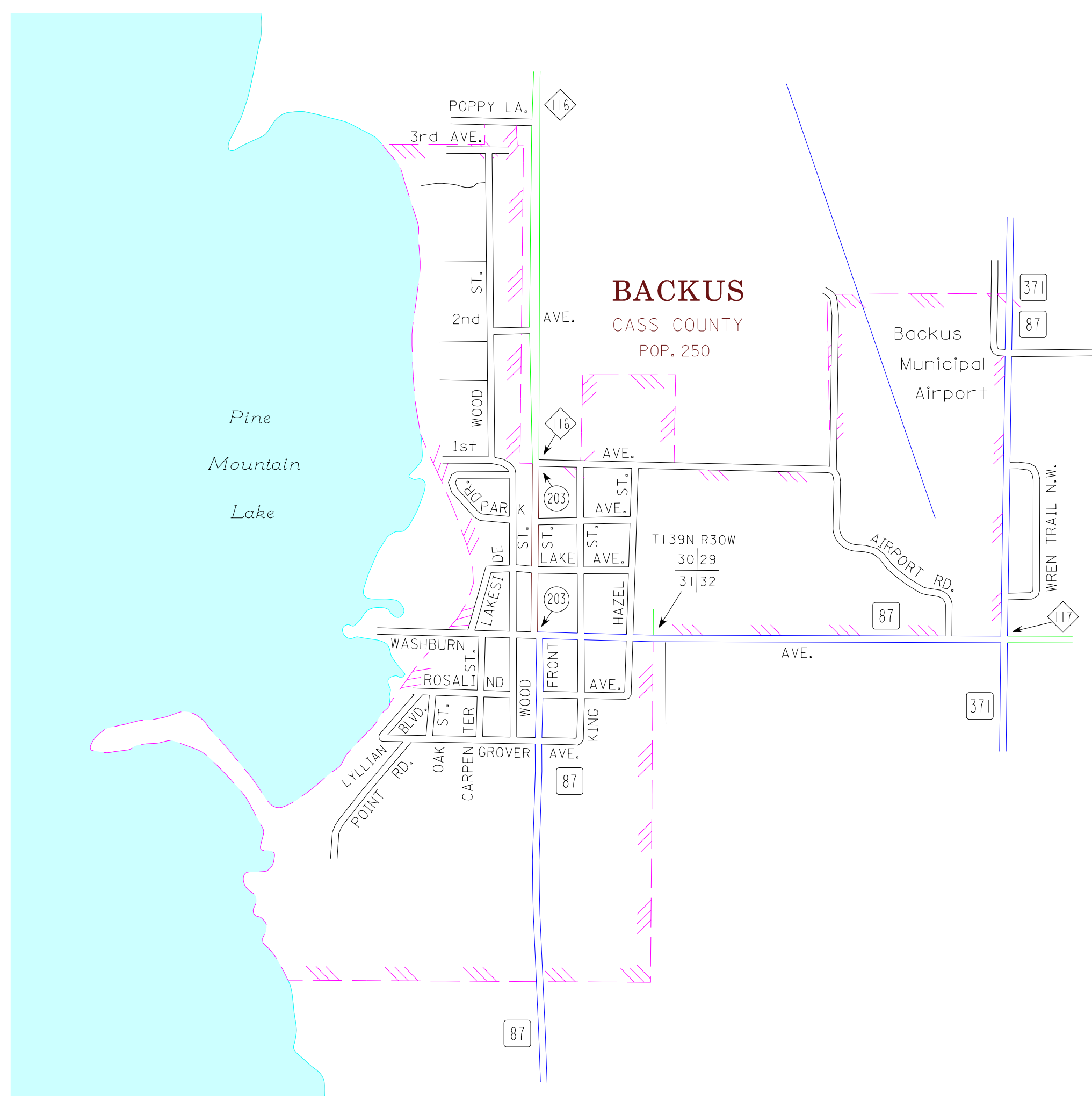
T144N R28W  
32|33  
5|4  
T143N R28W

T144N R28W  
33|34  
4|3  
T143N R28W

T144N R28W  
34|35  
3|2  
T143N R28W

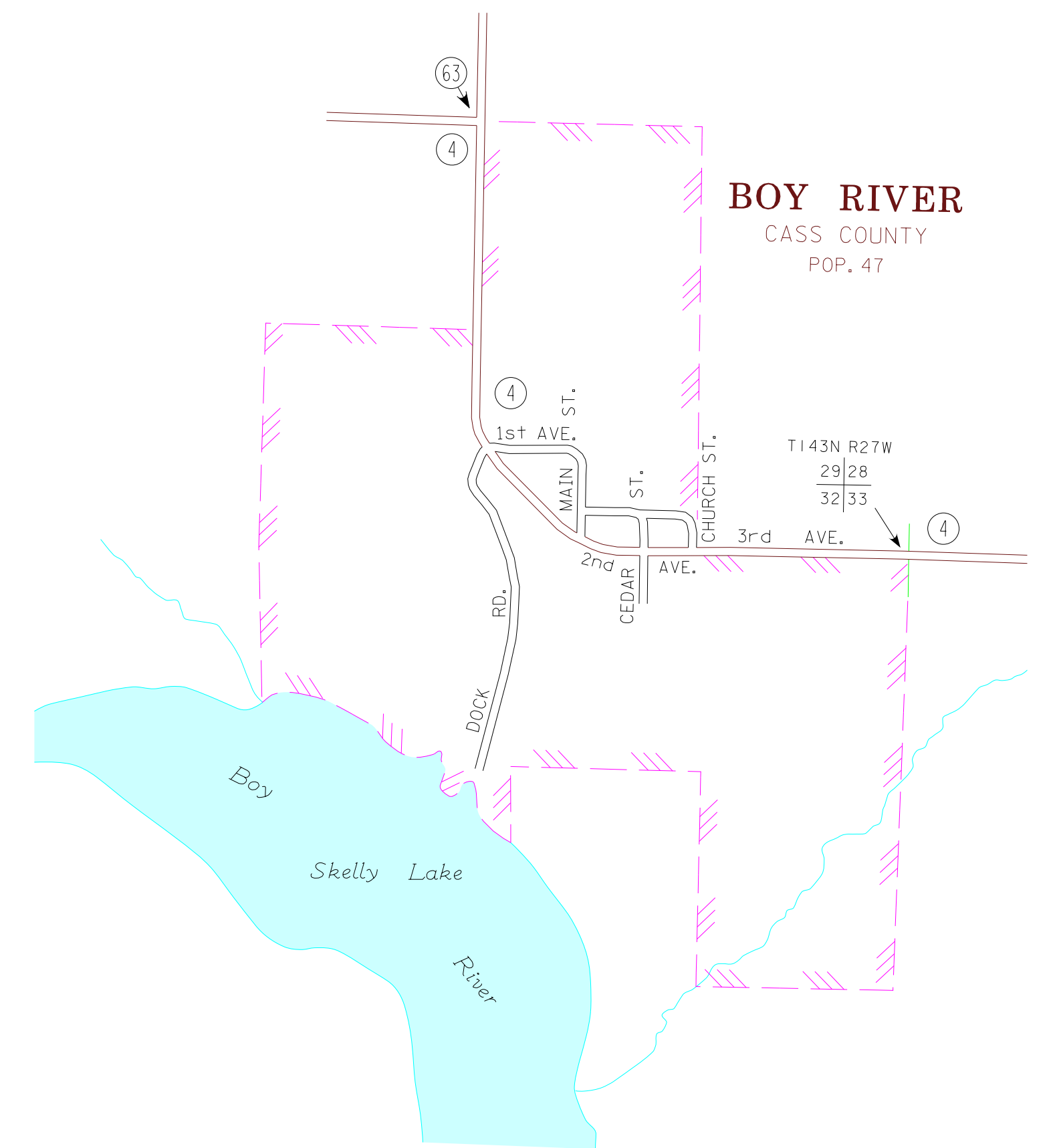
T143N R28W  
3|2  
10|11

**BACKUS**  
CASS COUNTY  
POP. 250



T139N R30W  
30|29  
31|32

**BOY RIVER**  
CASS COUNTY  
POP. 47



T143N R27W  
29|28  
32|33

MUNICIPALITIES SHOWN  
ON THIS SHEET  
BACKUS  
BOY RIVER  
FEDERAL DAM  
MOTLEY:  
See Morrison Co.  
Sheet 3 of 5

To request information from this document in an alternative format, call 651-366-4718 or 1-800-657-3774 (Greater Minnesota); 711 or 1-800-627-3529 (Minnesota Relay). You may also send an e-mail to ADRequest.dot@state.mn.us. (Please request at least one week in advance).

NOTE: 2010 U.S. CENSUS FIGURES SHOWN FOR ALL MUNICIPALITIES UNLESS OTHERWISE STATED.