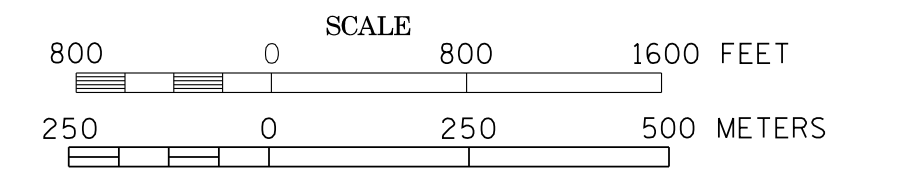
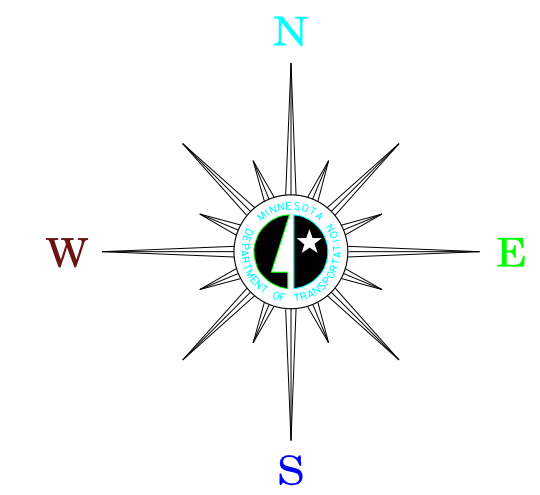


MUNICIPALITIES OF CARVER CO.

PREPARED BY THE
MINNESOTA DEPARTMENT OF TRANSPORTATION
OFFICE OF TRANSPORTATION DATA & ANALYSIS
IN COOPERATION WITH
U.S. DEPARTMENT OF TRANSPORTATION
FEDERAL HIGHWAY ADMINISTRATION



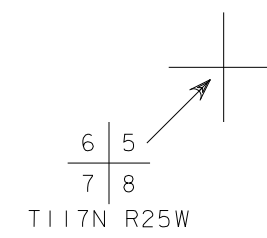
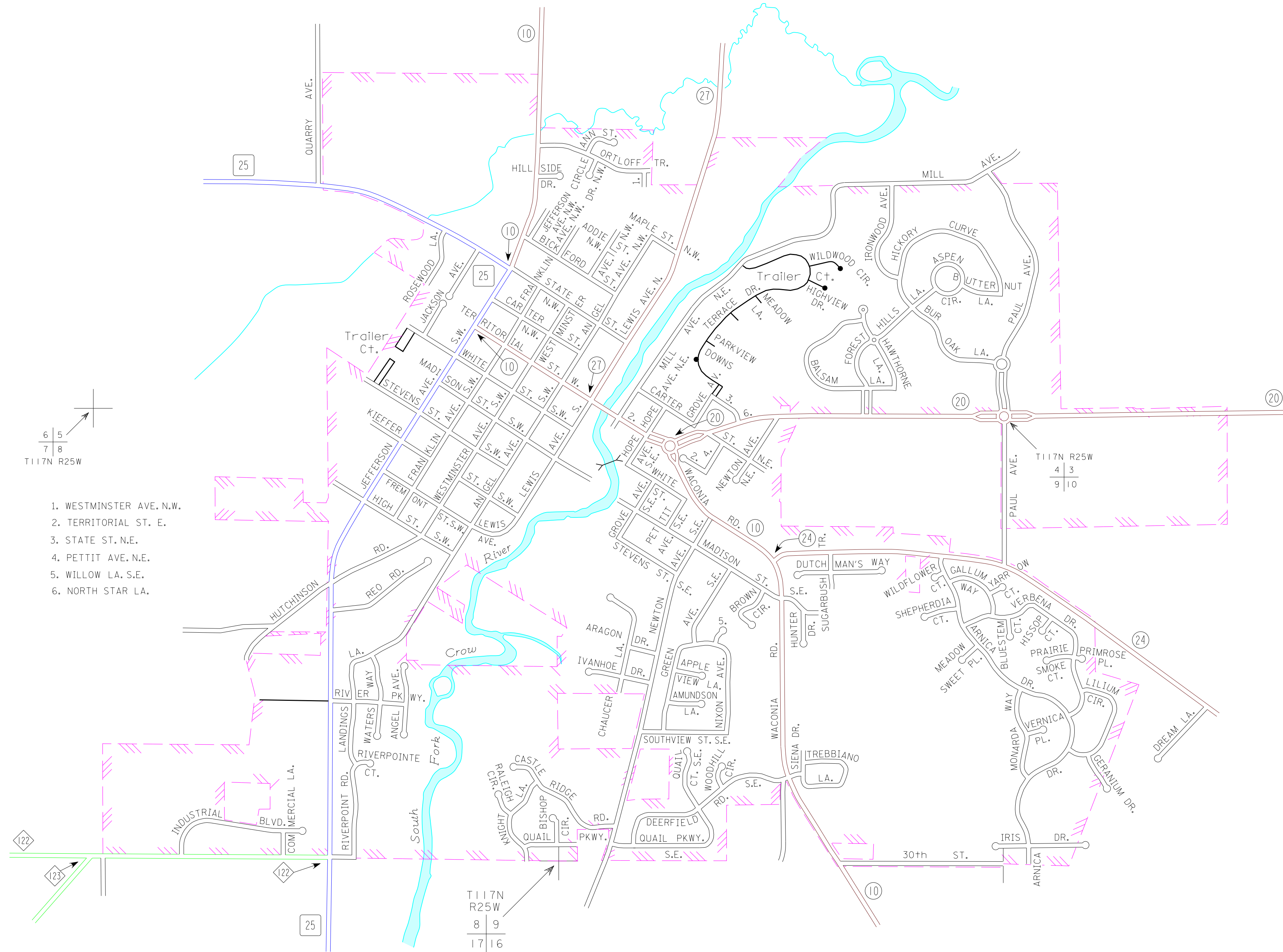
2011
BASIC DATA - 2010



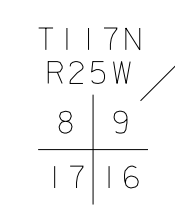
LEGEND

- INTERSTATE TRUNK HIGHWAY..... (35)
- U.S. TRUNK HIGHWAY..... (10)
- STATE TRUNK HIGHWAY..... (55)
- COUNTY STATE AID HIGHWAY..... (23)
- COUNTY ROAD..... (15)
- PUBLIC ROAD
- PRIVATE ROAD
- CORPORATE LIMITS.....

WATERTOWN CARVER COUNTY POP. 4,205



1. WESTMINSTER AVE. N.W.
2. TERRITORIAL ST. E.
3. STATE ST. N.E.
4. PETTIT AVE. N.E.
5. WILLOW LA. S.E.
6. NORTH STAR LA.



MUNICIPALITIES SHOWN
ON THIS SHEET
WATERTOWN

To request information from this document in an alternative format,
call 651-366-4718 or 1-800-657-3774 (Greater Minnesota);
711 or 1-800-627-3529 (Minnesota Relay). You may also send
an e-mail to ADArequest.dot@state.mn.us.
(Please request at least one week in advance).

NOTE: 2010 U.S. CENSUS FIGURES SHOWN FOR ALL MUNICIPALITIES UNLESS OTHERWISE STATED.