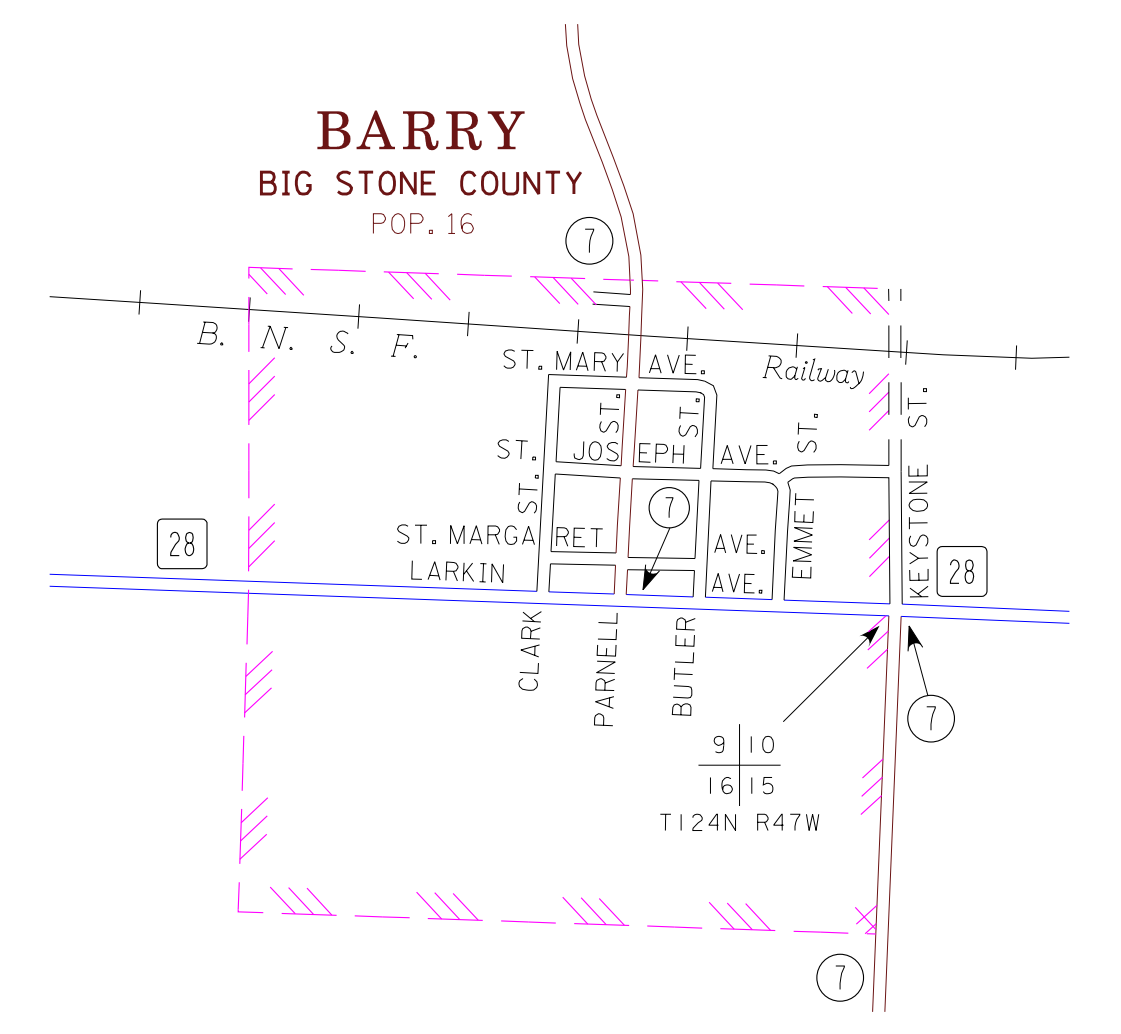
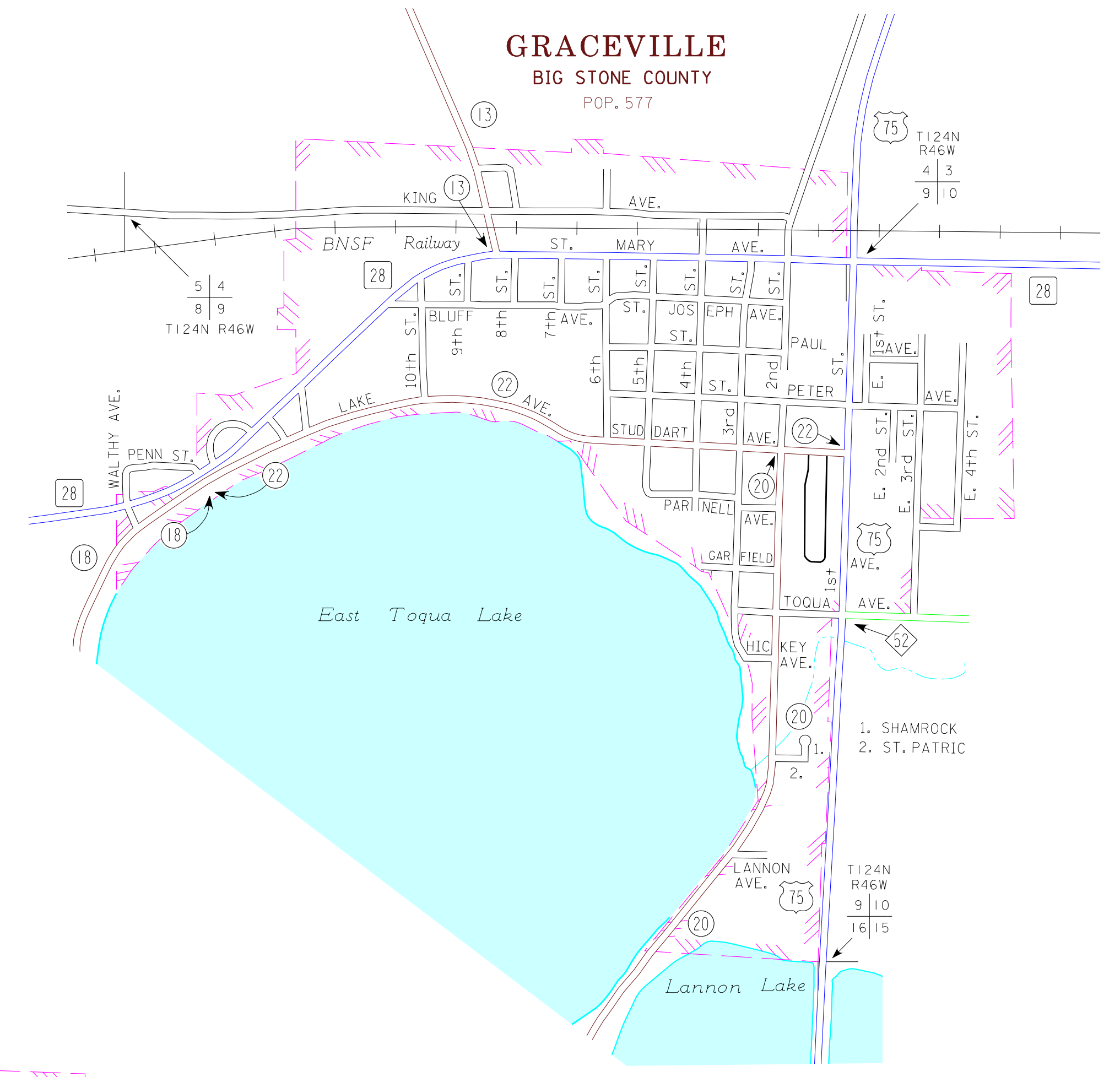


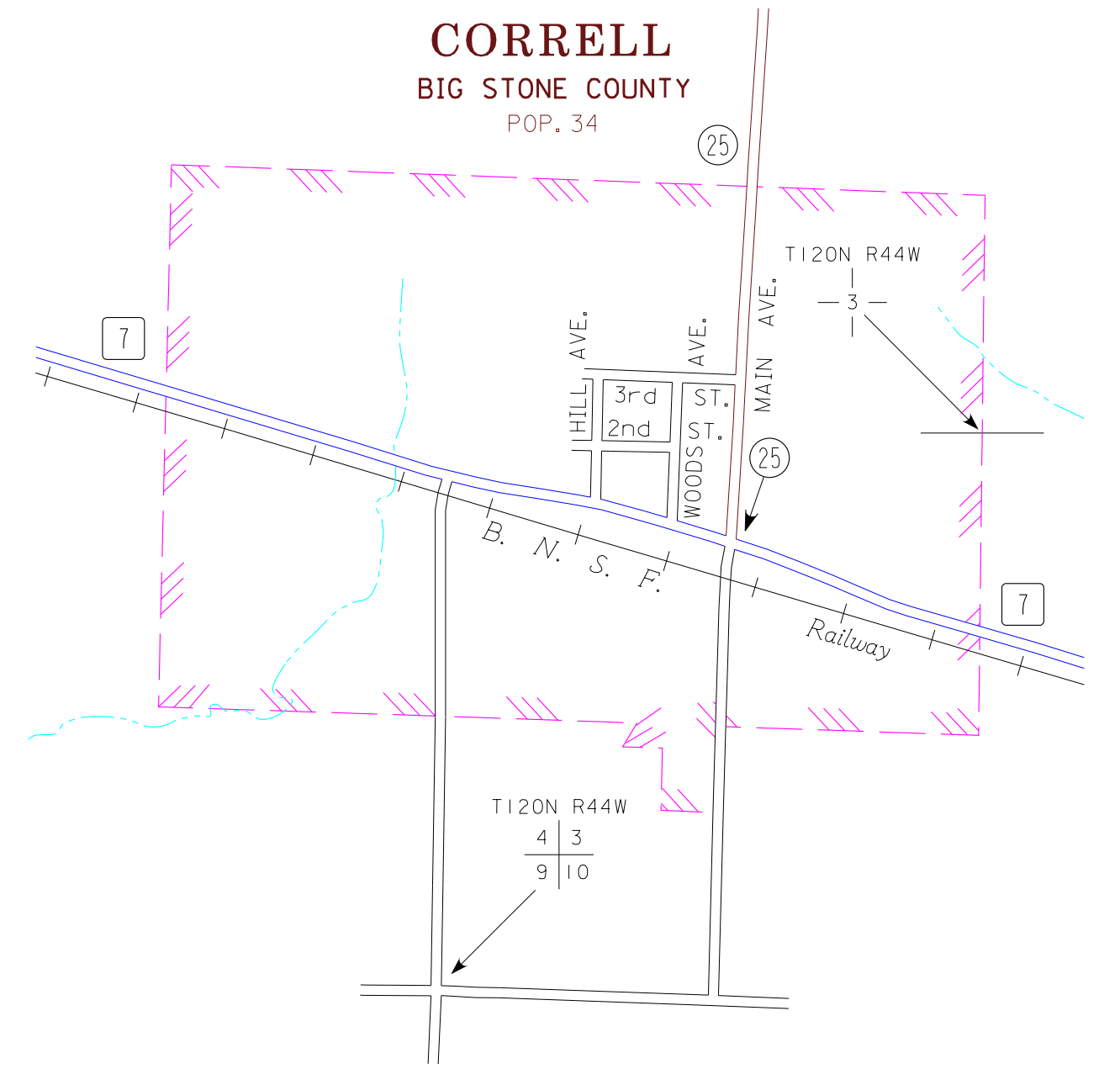
**ODESSA**  
BIG STONE COUNTY  
POP. 135



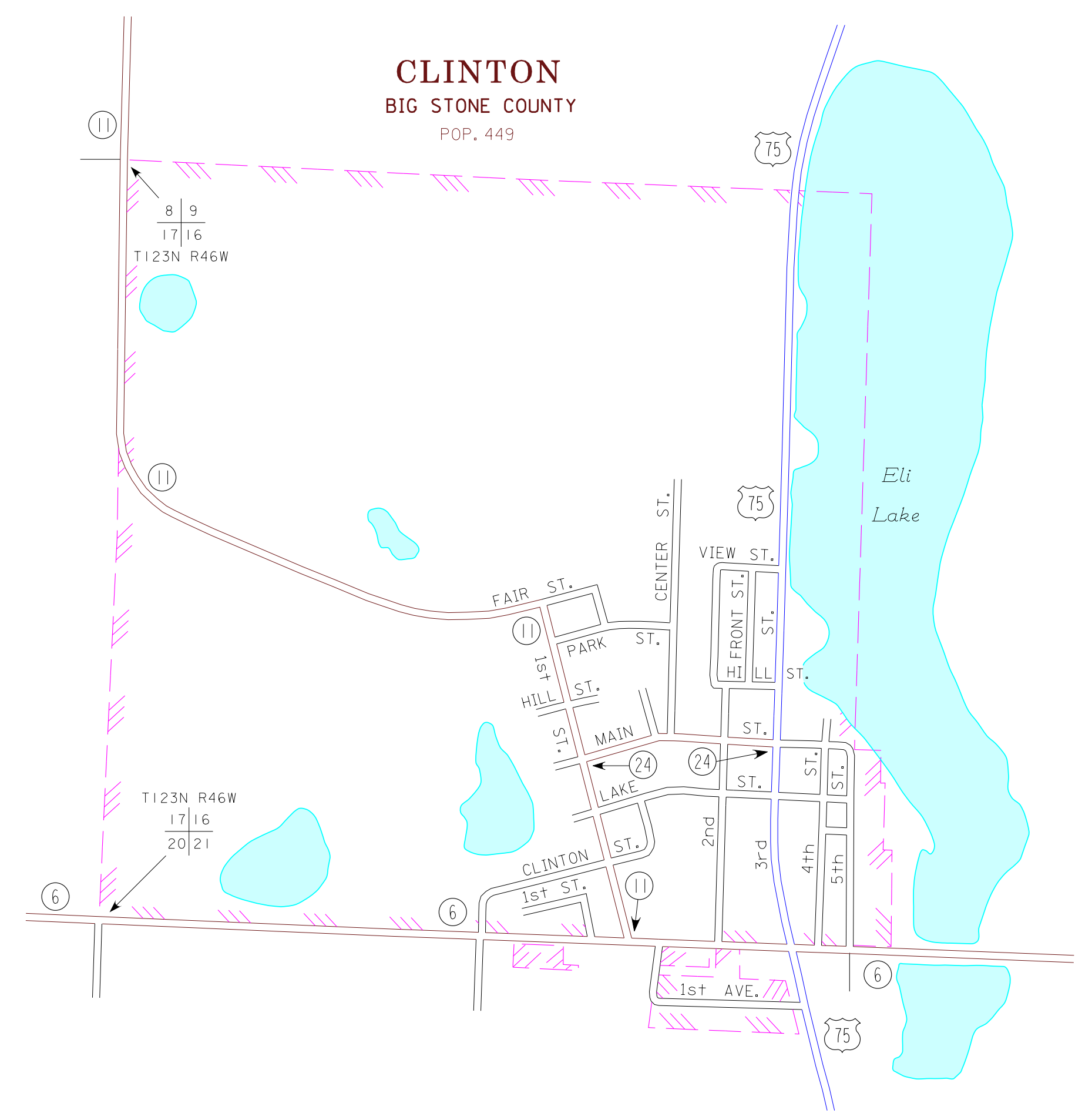
**BARRY**  
BIG STONE COUNTY  
POP. 16



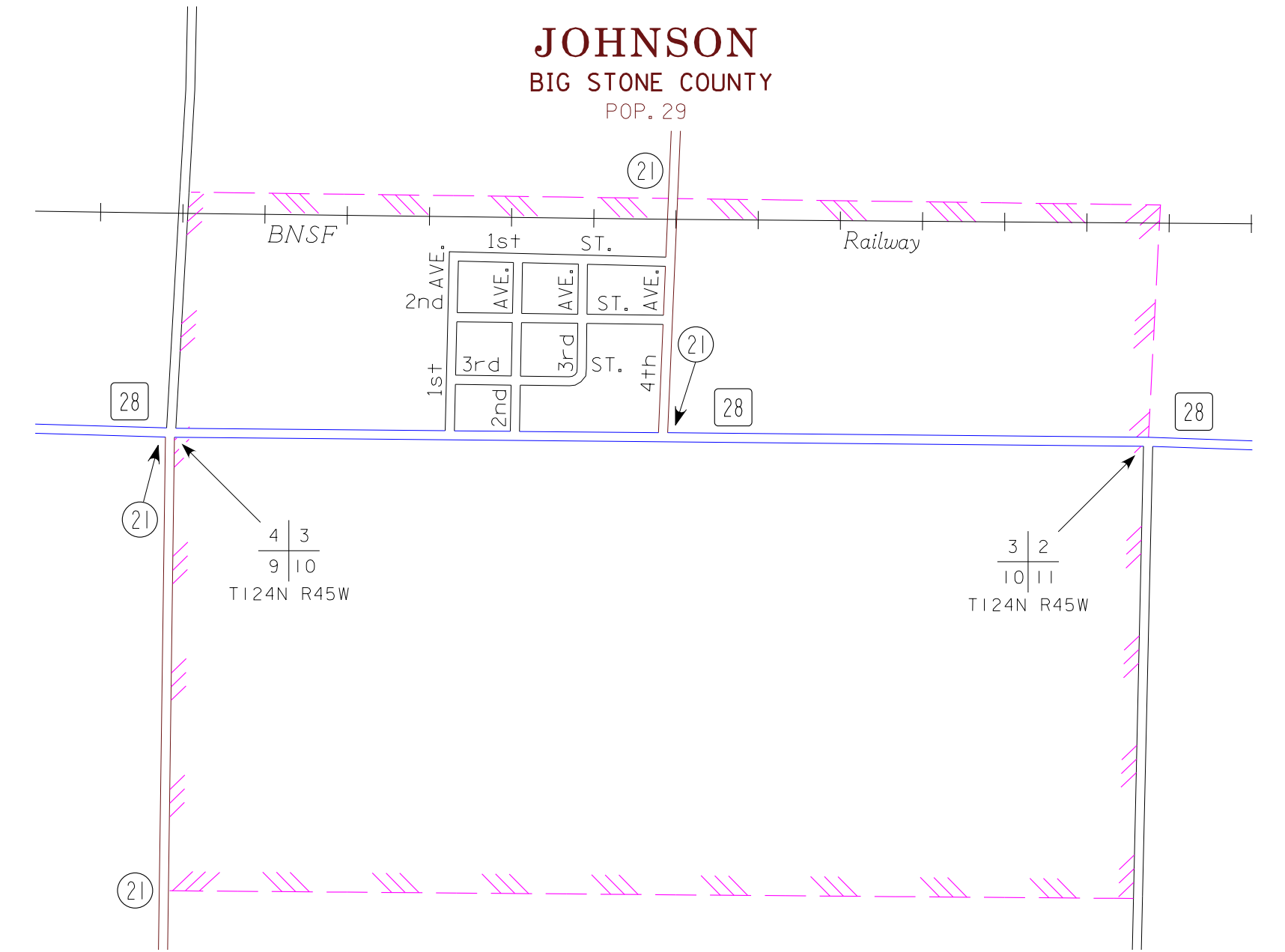
**GRACEVILLE**  
BIG STONE COUNTY  
POP. 577



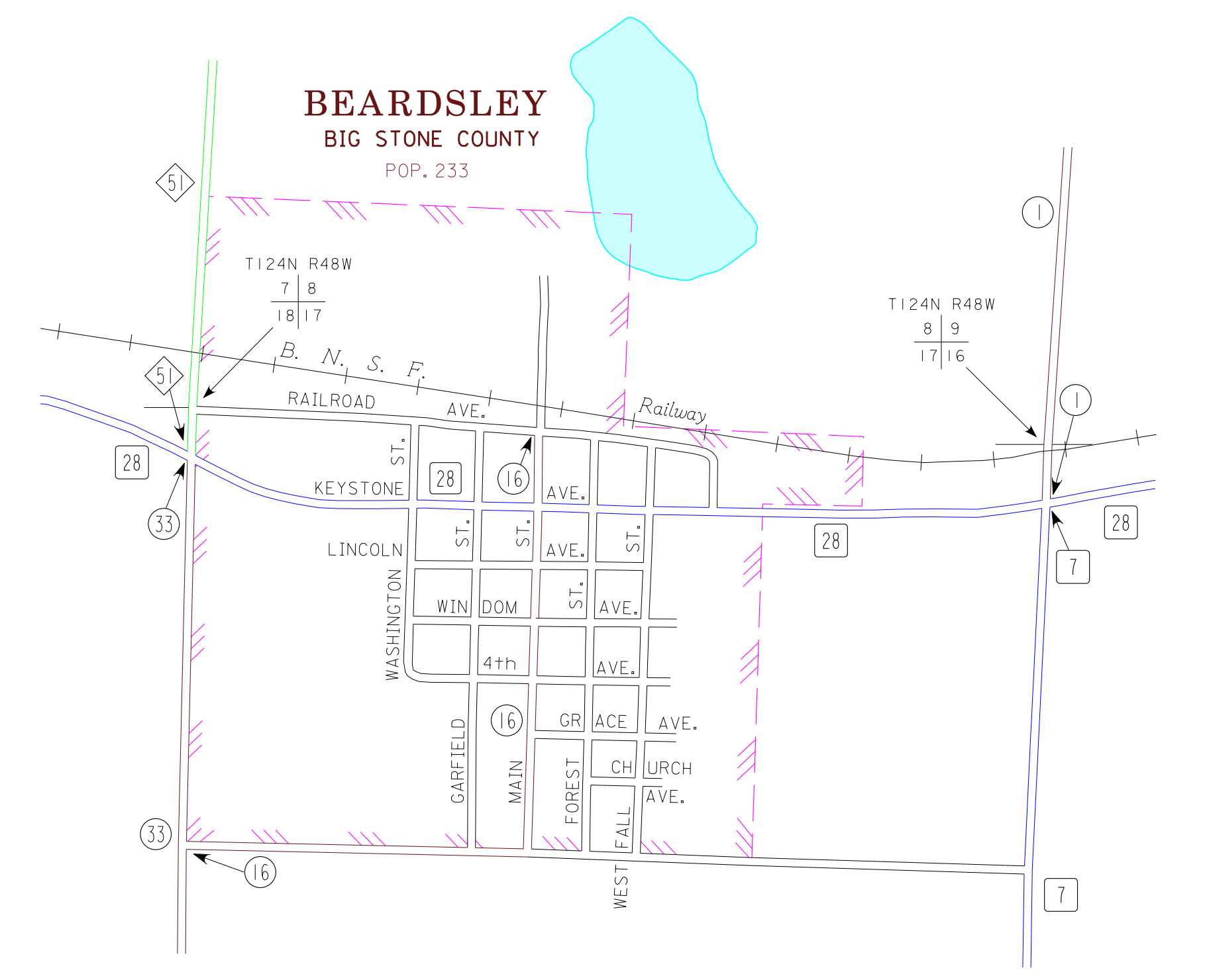
**CORRELL**  
BIG STONE COUNTY  
POP. 34



**CLINTON**  
BIG STONE COUNTY  
POP. 449



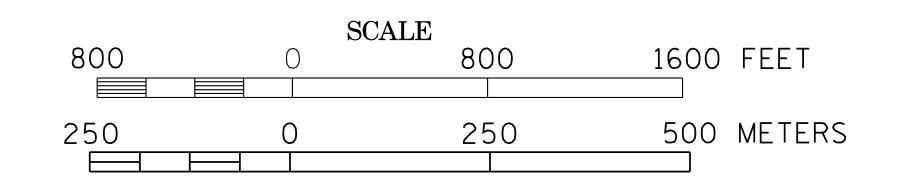
**JOHNSON**  
BIG STONE COUNTY  
POP. 29



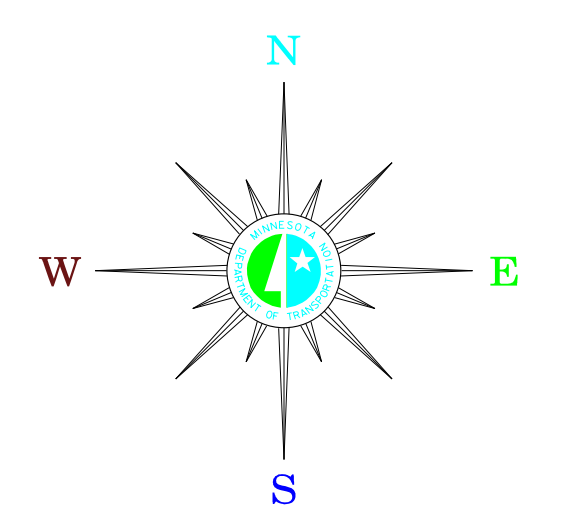
**BEARDSLEY**  
BIG STONE COUNTY  
POP. 233

MUNICIPALITIES OF  
**BIG STONE CO.**

PREPARED BY THE  
MINNESOTA DEPARTMENT OF TRANSPORTATION  
OFFICE OF TRANSPORTATION DATA & ANALYSIS  
IN COOPERATION WITH  
U.S. DEPARTMENT OF TRANSPORTATION  
FEDERAL HIGHWAY ADMINISTRATION



2011  
BASIC DATA - 2010



**LEGEND**

- INTERSTATE TRUNK HIGHWAY..... (I-35)
- U.S. TRUNK HIGHWAY..... (US-75)
- STATE TRUNK HIGHWAY..... (ST-55)
- COUNTY STATE AID HIGHWAY..... (CSA-23)
- COUNTY ROAD..... (C-15)
- PUBLIC ROAD .....
- PRIVATE ROAD .....
- CORPORATE LIMITS.....

MUNICIPALITIES SHOWN  
ON THIS SHEET

- BARRY
- BEARDSLEY
- CLINTON
- CORRELL
- GRACEVILLE
- JOHNSON
- ODESSA

To request information from this document in an alternative format,  
call 651-366-4718 or 1-800-657-3774 (Greater Minnesota);  
711 or 1-800-657-3529 (Minnesota Relay). You may also send  
an e-mail to ADAREquest.dot@state.mn.us  
(Please request at least one week in advance).

NOTE: 2010 U.S. CENSUS FIGURES SHOWN FOR ALL MUNICIPALITIES UNLESS OTHERWISE STATED.