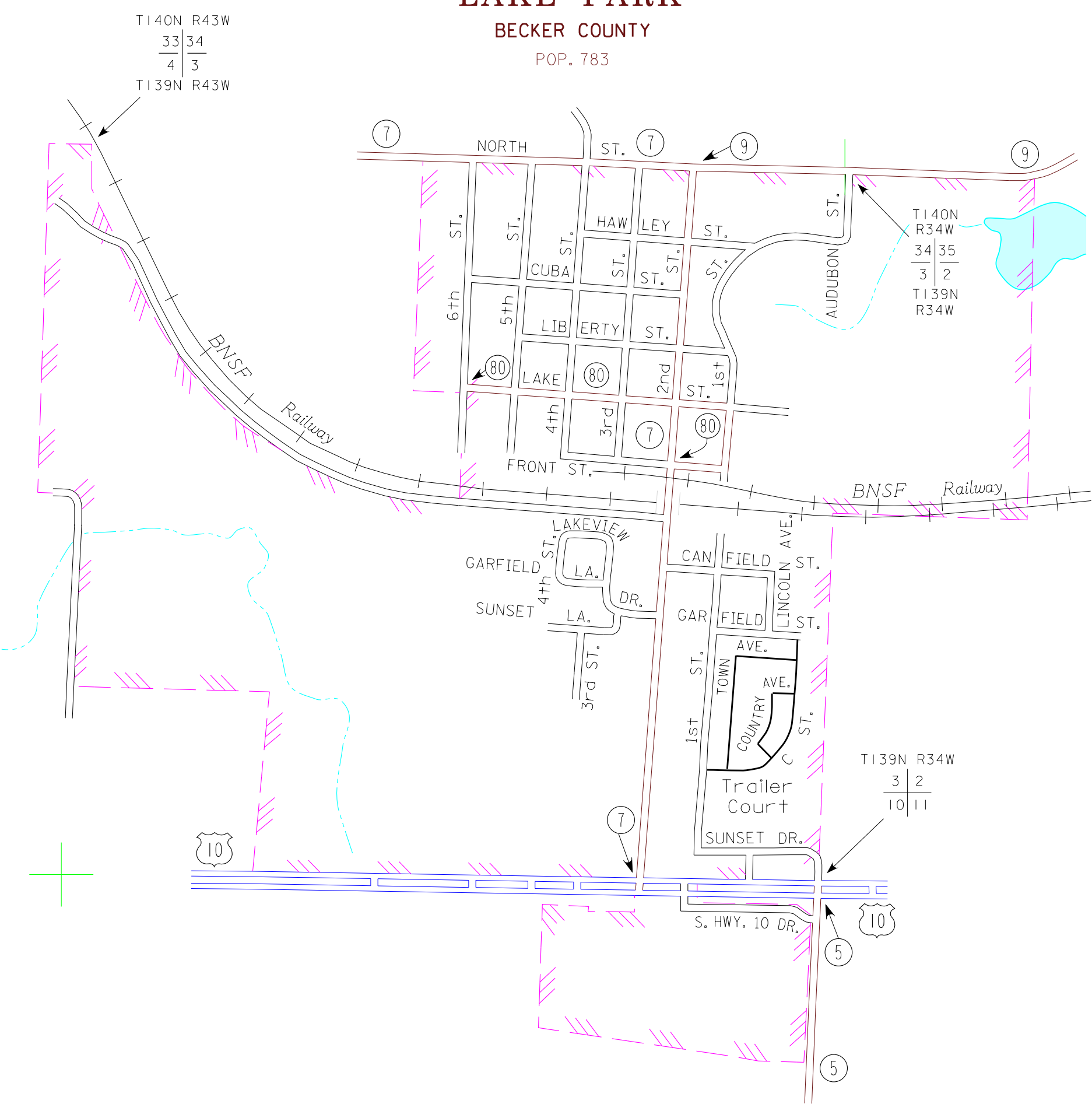


**LAKE PARK**

BECKER COUNTY

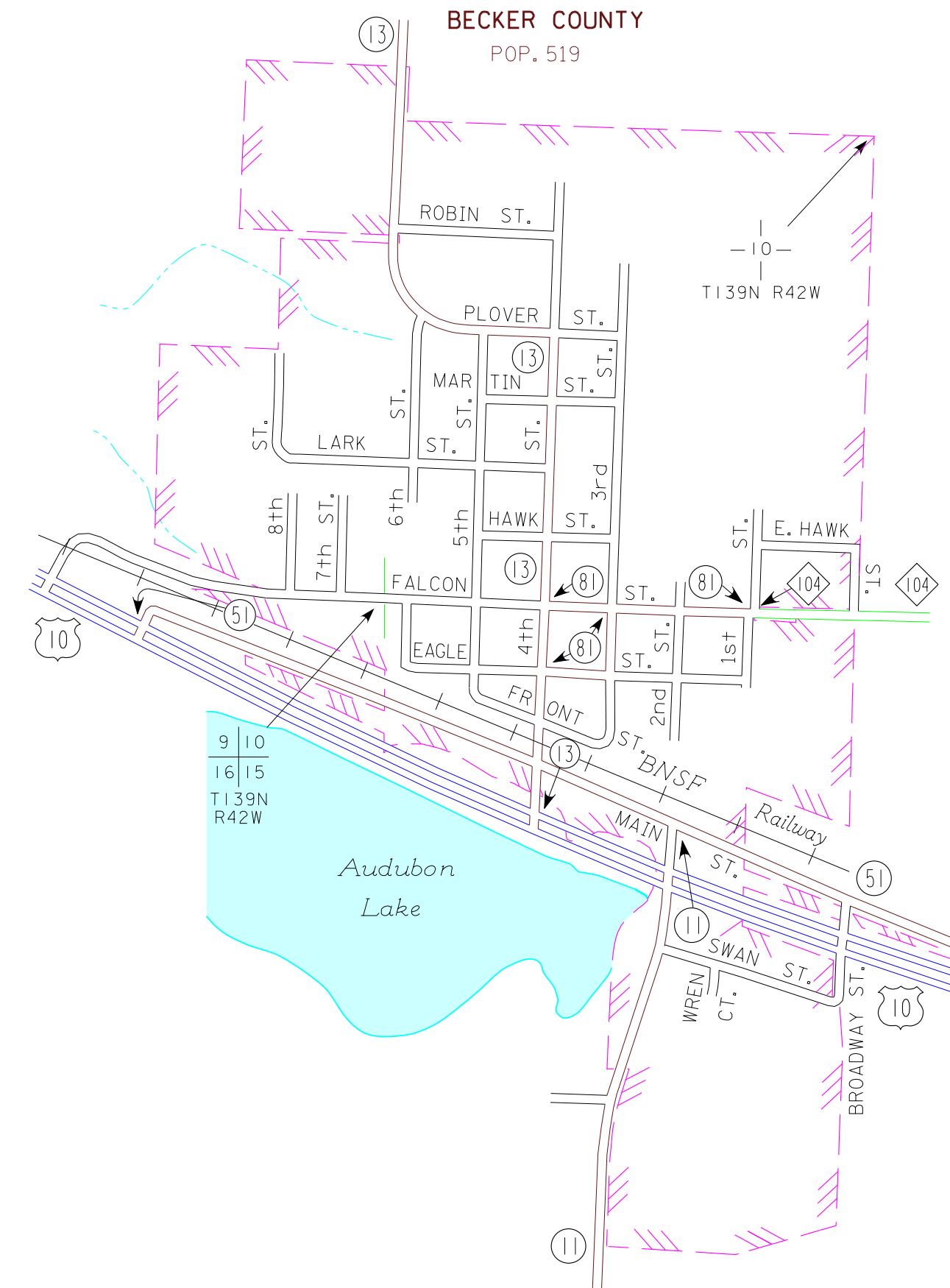
POP. 783



**AUDUBON**

BECKER COUNTY

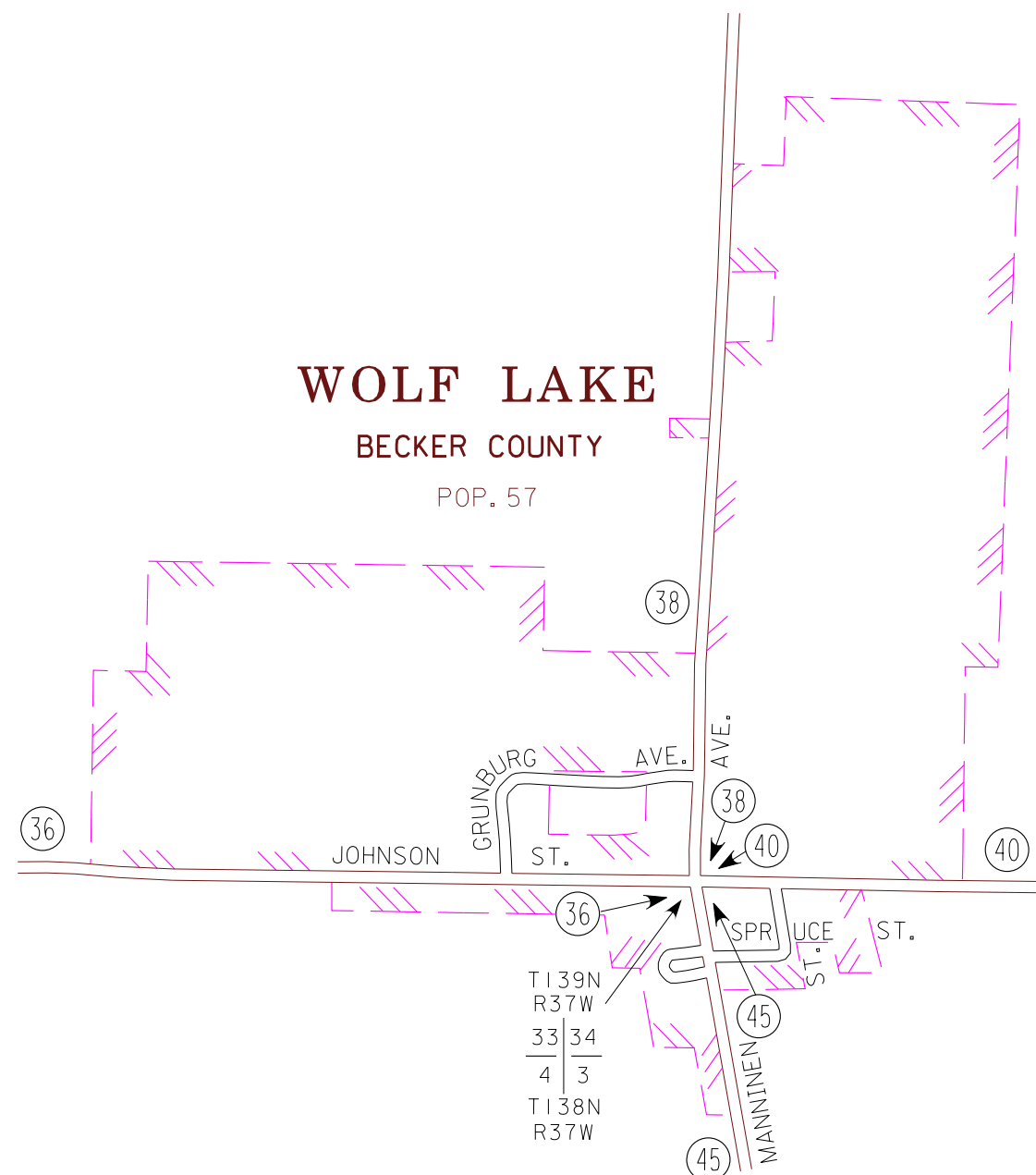
POP. 519



**WOLF LAKE**

BECKER COUNTY

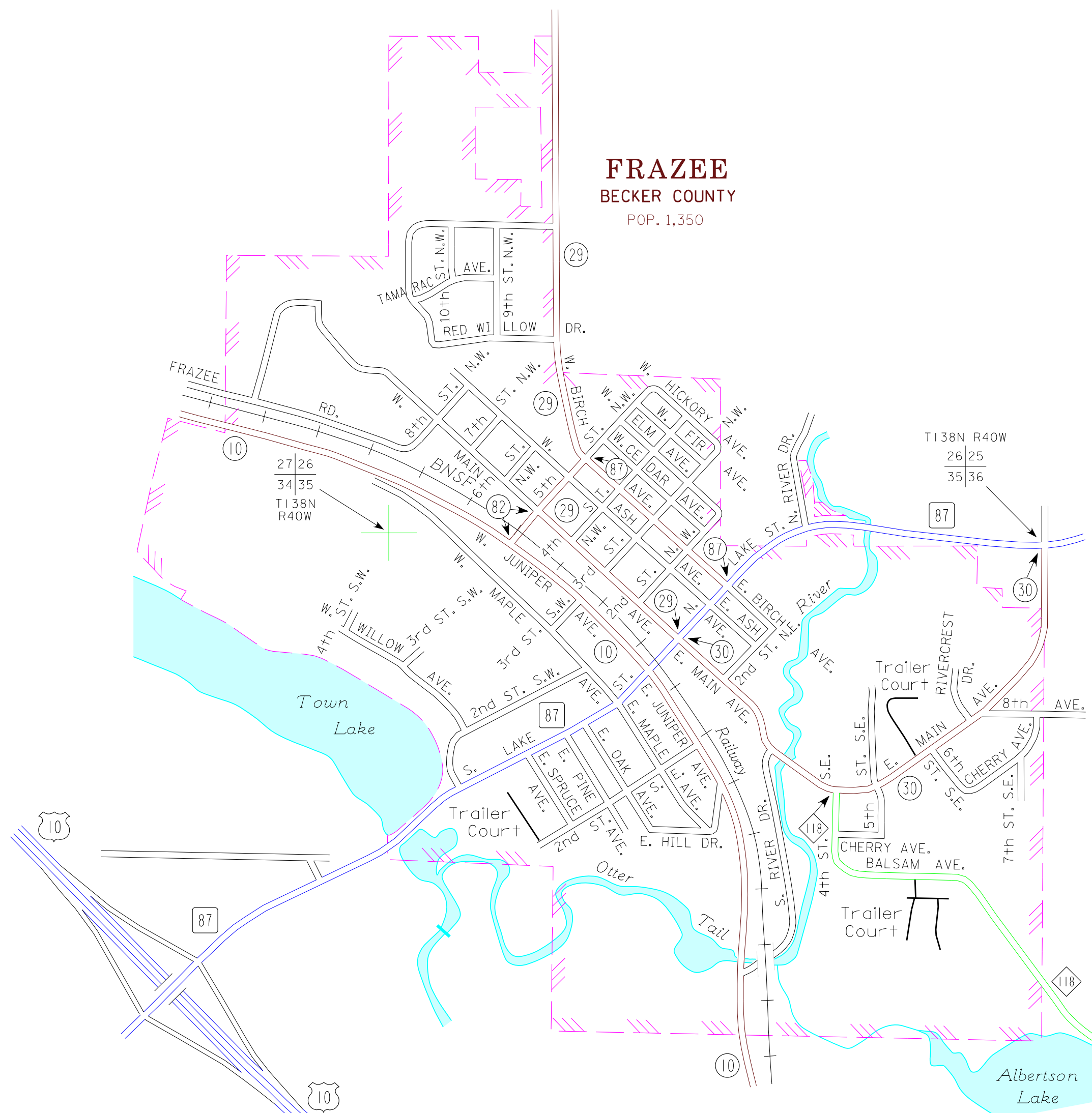
POP. 57



**FRAZEE**

BECKER COUNTY

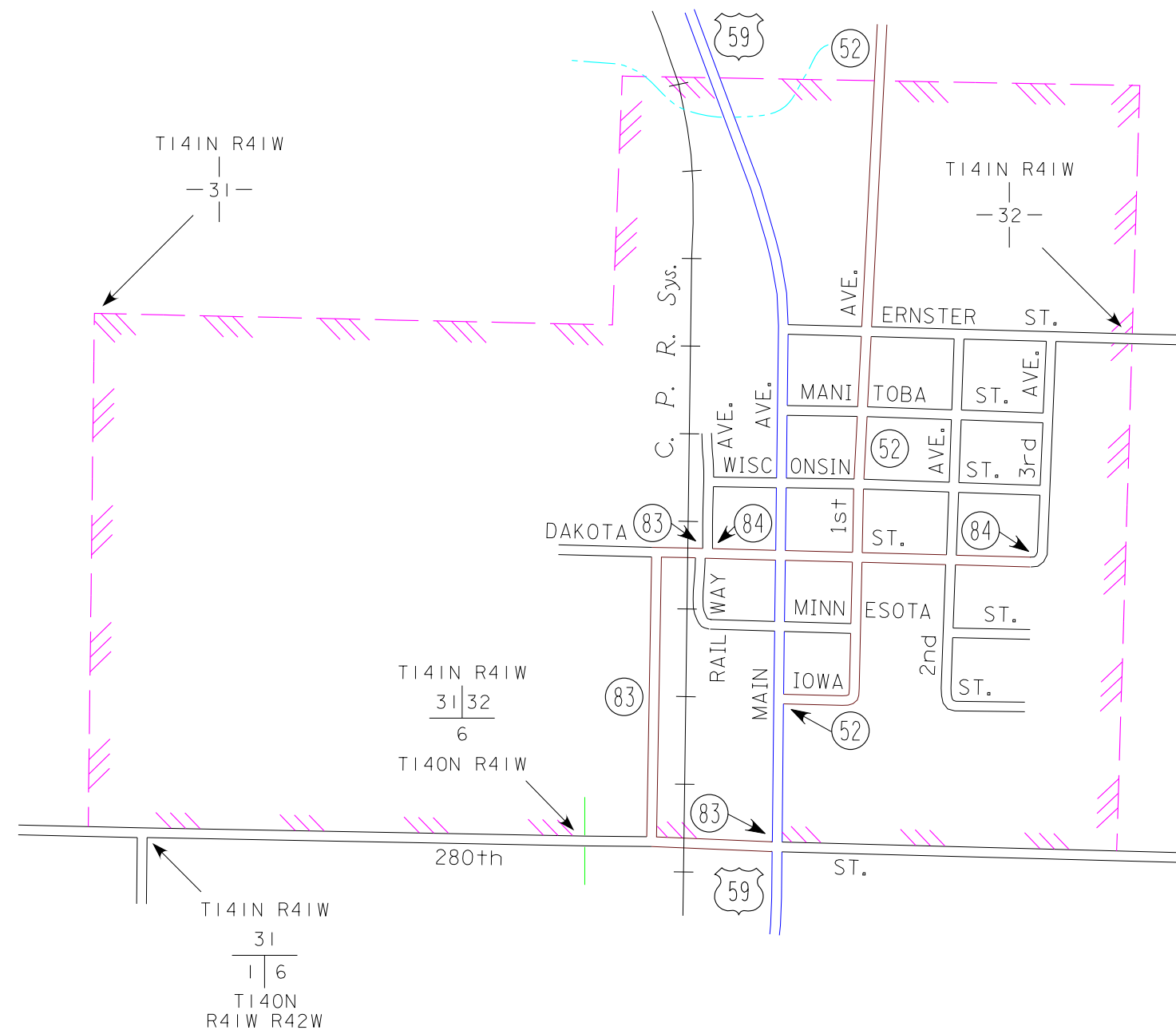
POP. 1,350



**CALLAWAY**

BECKER COUNTY

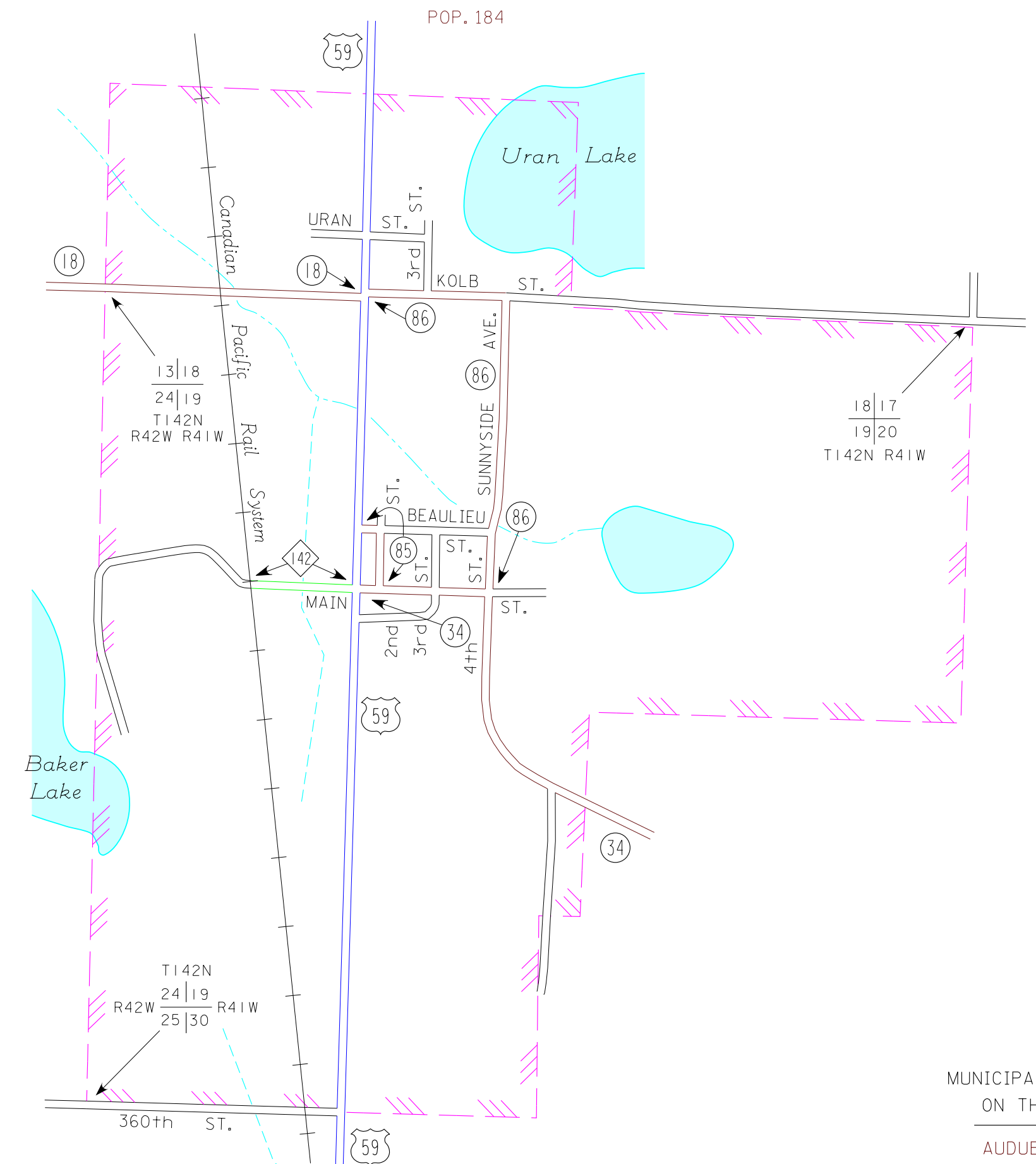
POP. 234



**OGEMA**

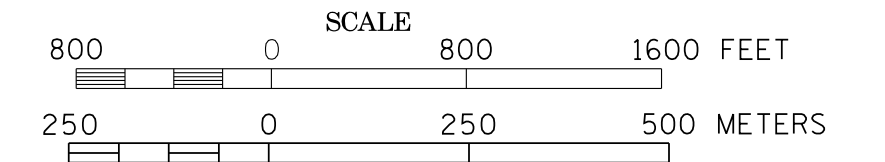
BECKER COUNTY

POP. 184

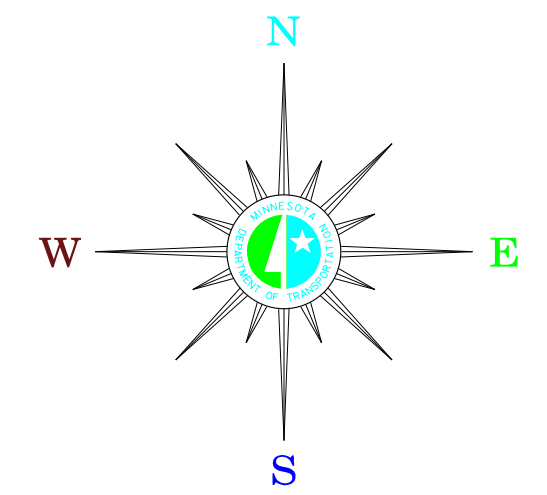


MUNICIPALITIES OF  
**BECKER COUNTY**

PREPARED BY THE  
MINNESOTA DEPARTMENT OF TRANSPORTATION  
OFFICE OF TRANSPORTATION DATA & ANALYSIS  
IN COOPERATION WITH  
U.S. DEPARTMENT OF TRANSPORTATION  
FEDERAL HIGHWAY ADMINISTRATION



2011  
BASIC DATA - 2010



**LEGEND**

- INTERSTATE TRUNK HIGHWAY..... (35)
- U.S. TRUNK HIGHWAY..... (10)
- STATE TRUNK HIGHWAY..... (55)
- COUNTY STATE AID HIGHWAY..... (23)
- COUNTY ROAD..... (15)
- PUBLIC ROAD.....
- PRIVATE ROAD.....
- CORPORATE LIMITS.....

MUNICIPALITIES SHOWN  
ON THIS SHEET

- AUDUBON
- CALLAWAY
- FRAZEE
- LAKE PARK
- OGEMA
- WOLF LAKE

To request information from this document in an alternative format, call 855-366-4718 or 1-800-657-3774 (Greater Minnesota); 711 or 1-800-627-3529 (Minnesota Relay). You may also send an e-mail to ADRequest.dot@state.mn.us. (Please request at least one week in advance.)

NOTE: 2010 U.S. CENSUS FIGURES SHOWN FOR ALL MUNICIPALITIES UNLESS OTHERWISE STATED.