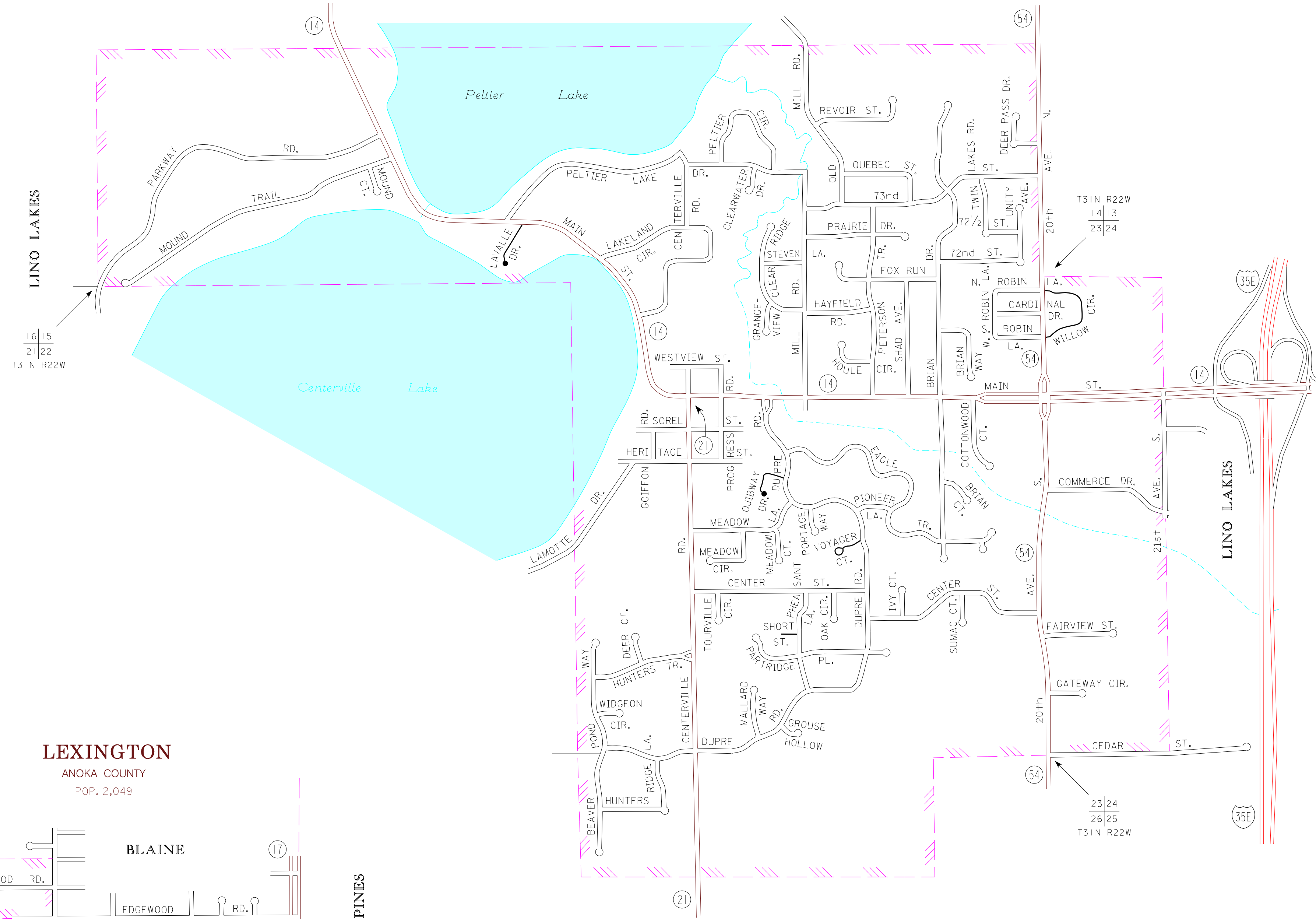


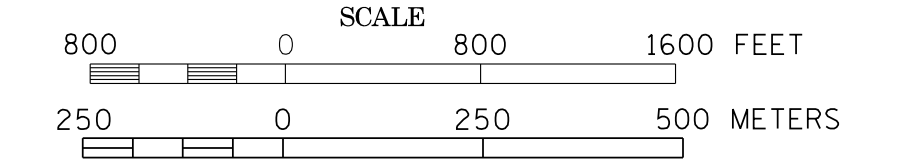
CENTERVILLE
ANOKA COUNTY
POP. 3,792

LINO LAKES

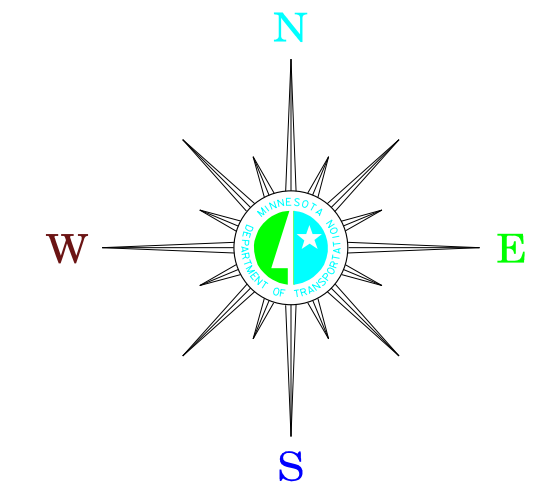


MUNICIPALITIES OF
ANOKA CO.

PREPARED BY THE
MINNESOTA DEPARTMENT OF TRANSPORTATION
OFFICE OF TRANSPORTATION DATA & ANALYSIS
IN COOPERATION WITH
U.S. DEPARTMENT OF TRANSPORTATION
FEDERAL HIGHWAY ADMINISTRATION



2011
BASIC DATA - 2009

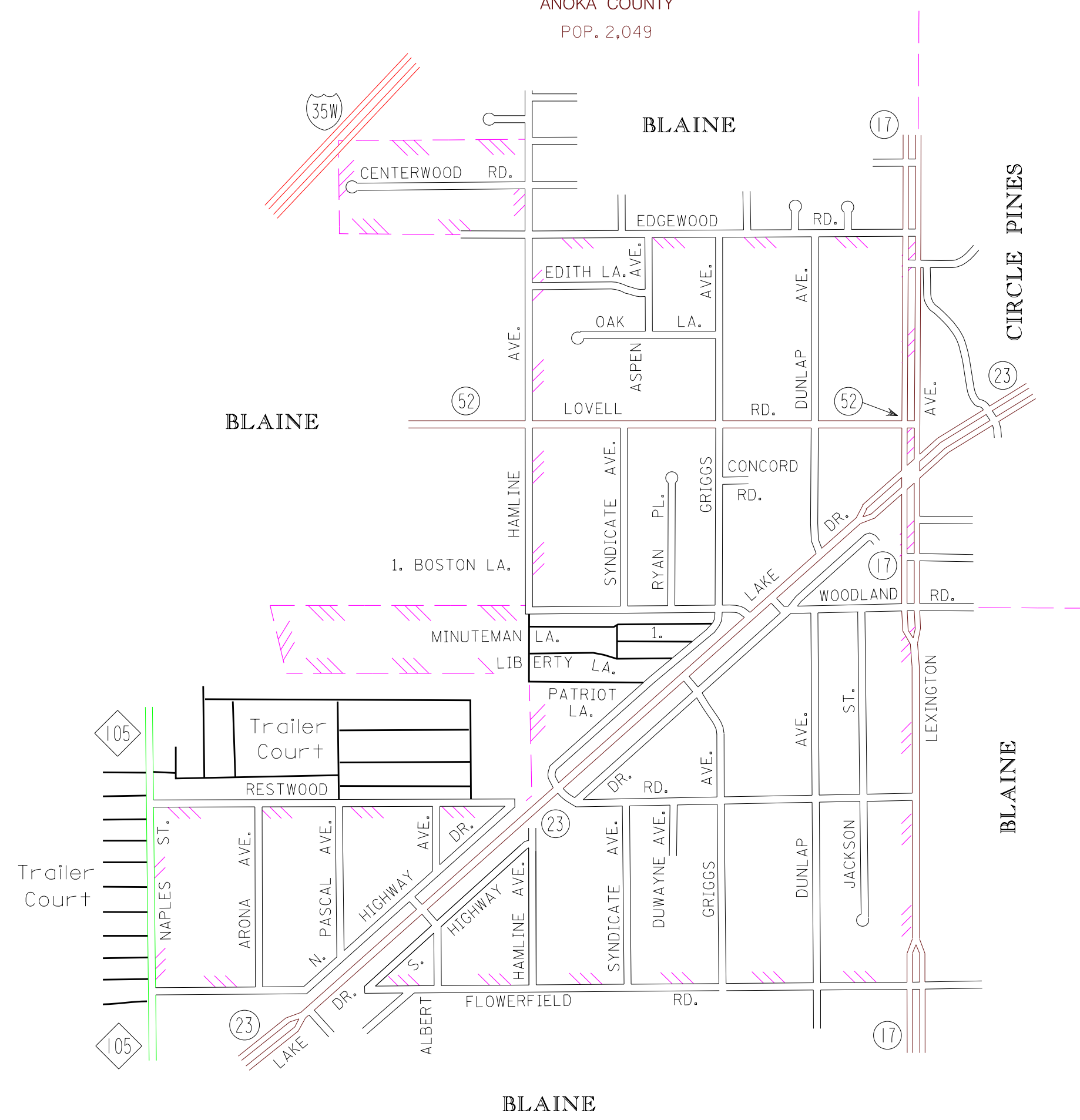


LEGEND

- INTERSTATE TRUNK HIGHWAY..... (35)
- U.S. TRUNK HIGHWAY..... (16)
- STATE TRUNK HIGHWAY..... (55)
- COUNTY STATE AID HIGHWAY..... (23)
- COUNTY ROAD..... (15)
- PUBLIC ROAD.....
- PRIVATE ROAD.....
- CORPORATE LIMITS.....

LEXINGTON
ANOKA COUNTY
POP. 2,049

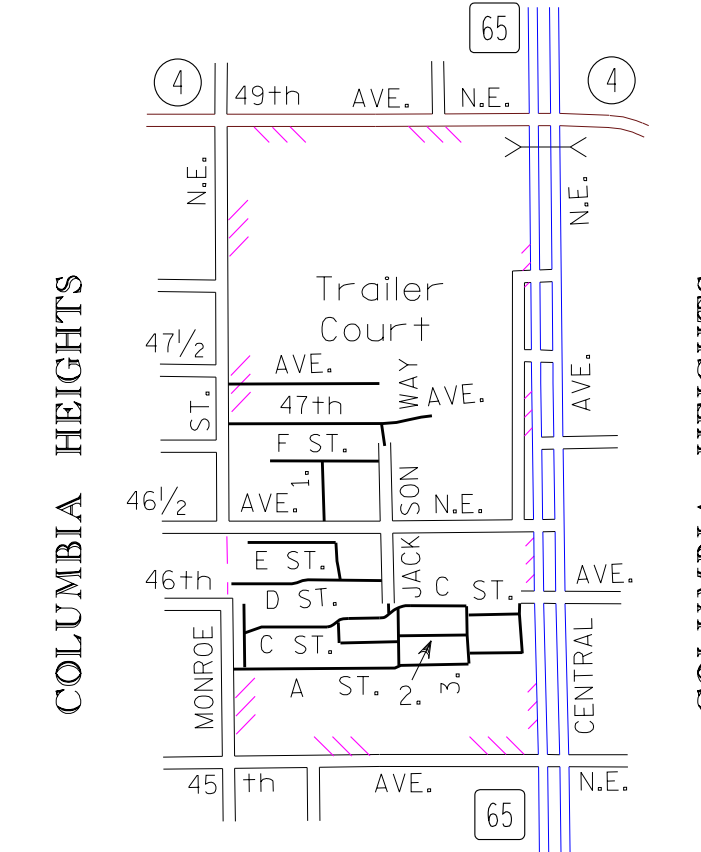
BLAINE



LINO LAKES

HILLTOP
ANOKA CO.
POP. 744

COLUMBIA HEIGHTS

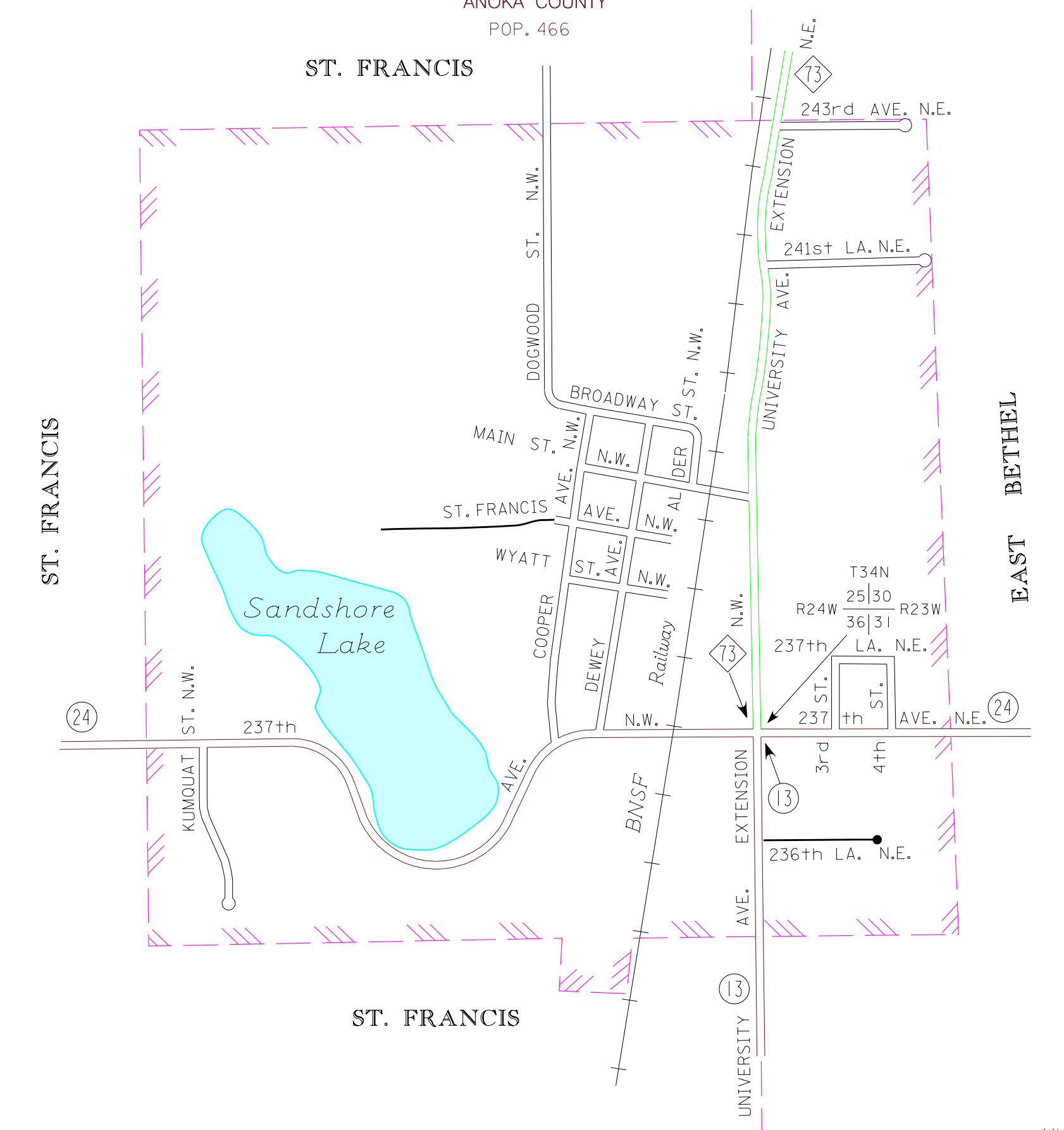


1. QUINCY WAY
2. B ST.
3. VAN BUREN WAY

COLUMBIA HEIGHTS

BETHEL
ANOKA COUNTY
POP. 466

ST. FRANCIS



MUNICIPALITIES SHOWN
ON THIS SHEET

- BETHEL
- CENTERVILLE
- HILLTOP
- LEXINGTON

To request information from this document in an alternative format, call 651-366-4718 or 1-800-657-3774 (Greater Minnesota); 711 or 1-800-627-3529 (Minnesota Relay). You may also send an e-mail to ADRequest.digit@state.mn.us. (Please request at least one week in advance.)

NOTE: 2010 U.S. CENSUS FIGURES SHOWN FOR ALL MUNICIPALITIES UNLESS OTHERWISE STATED.