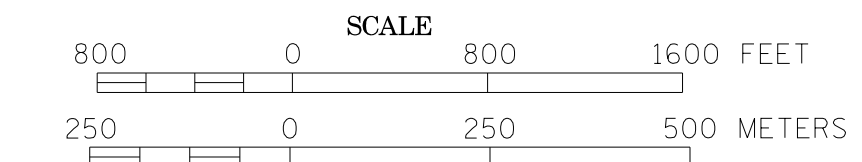
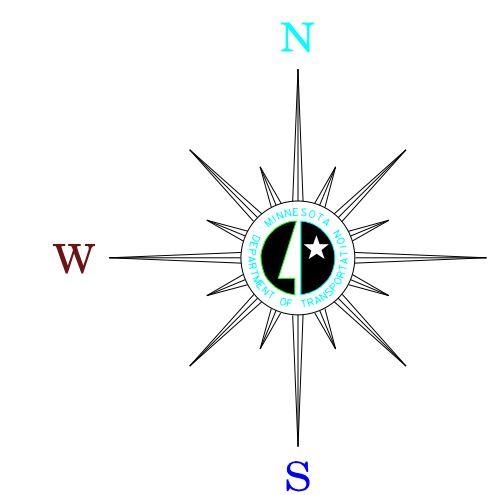


MUNICIPALITY OF MORRIS

PREPARED BY THE
MINNESOTA DEPARTMENT OF TRANSPORTATION
 OFFICE OF TRANSPORTATION DATA & ANALYSIS
 IN COOPERATION WITH
U.S. DEPARTMENT OF TRANSPORTATION
 FEDERAL HIGHWAY ADMINISTRATION

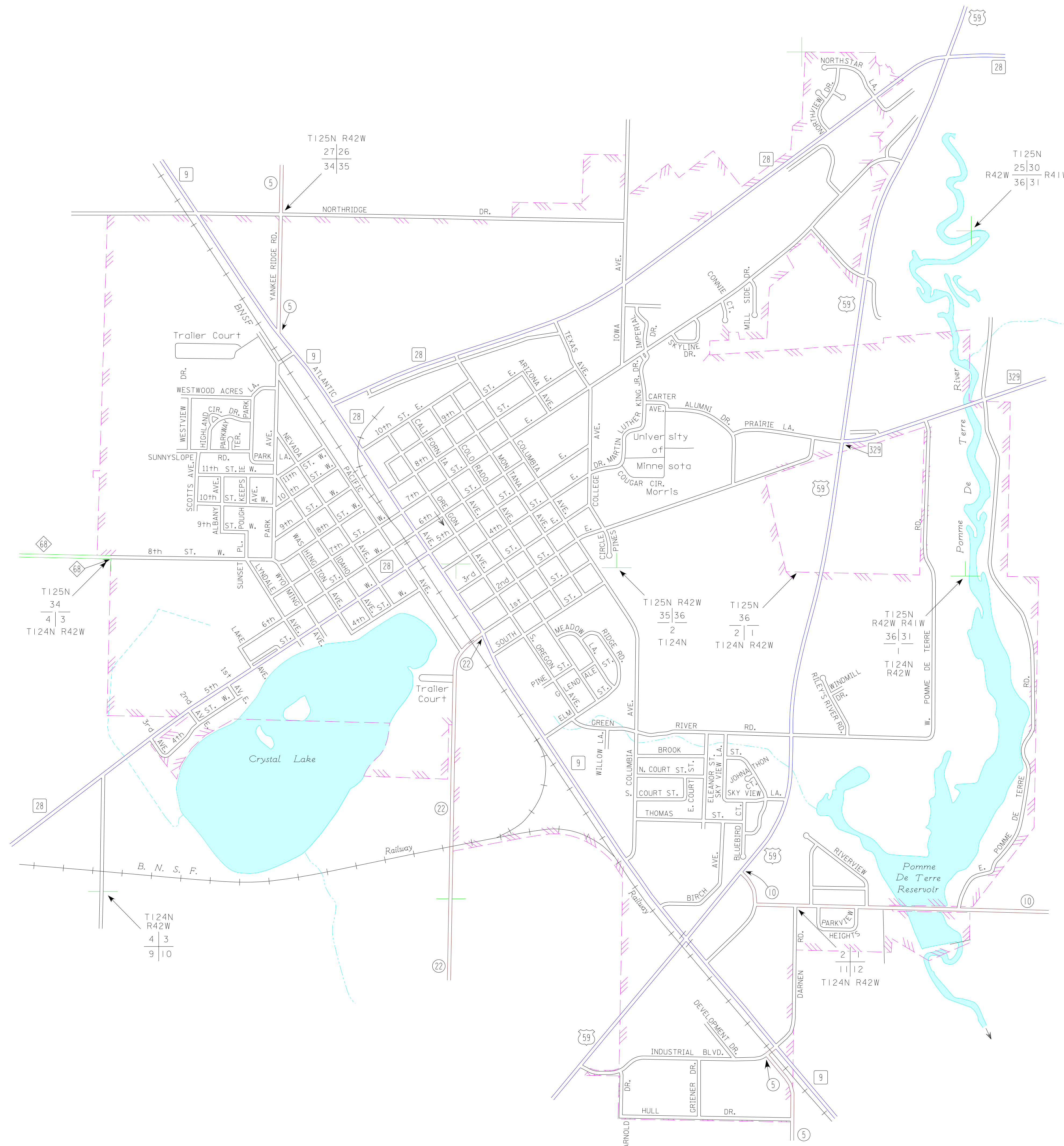


2011
 BASIC DATA - 2008



LEGEND

- INTERSTATE TRUNK HIGHWAY..... (I-35)
- U.S. TRUNK HIGHWAY..... (US-28)
- STATE TRUNK HIGHWAY..... (ST-59)
- COUNTY STATE AID HIGHWAY..... (CSA-329)
- COUNTY ROAD..... (C-9)
- CORPORATE LIMITS.....
- PUBLIC ROAD.....
- PRIVATE ROAD.....



To request information from this document in an alternative format, call 651-368-4718 or 1-800-657-3774 (Greater Minnesota); 711 or 1-800-627-3529 (Minnesota Relay). You may also send an e-mail to tda@request.state.mn.us. (Please request at least one week in advance).