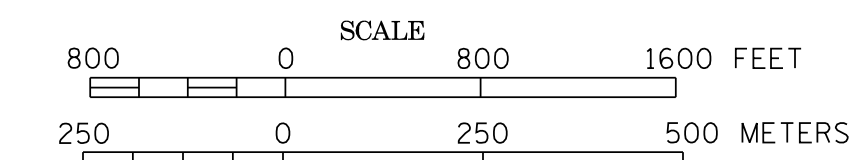
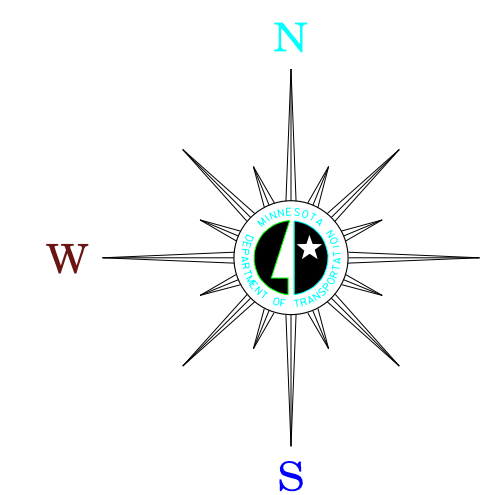


MUNICIPALITY OF
BYRON

PREPARED BY THE
MINNESOTA DEPARTMENT OF TRANSPORTATION
OFFICE OF TRANSPORTATION DATA & ANALYSIS
IN COOPERATION WITH
U.S. DEPARTMENT OF TRANSPORTATION
FEDERAL HIGHWAY ADMINISTRATION

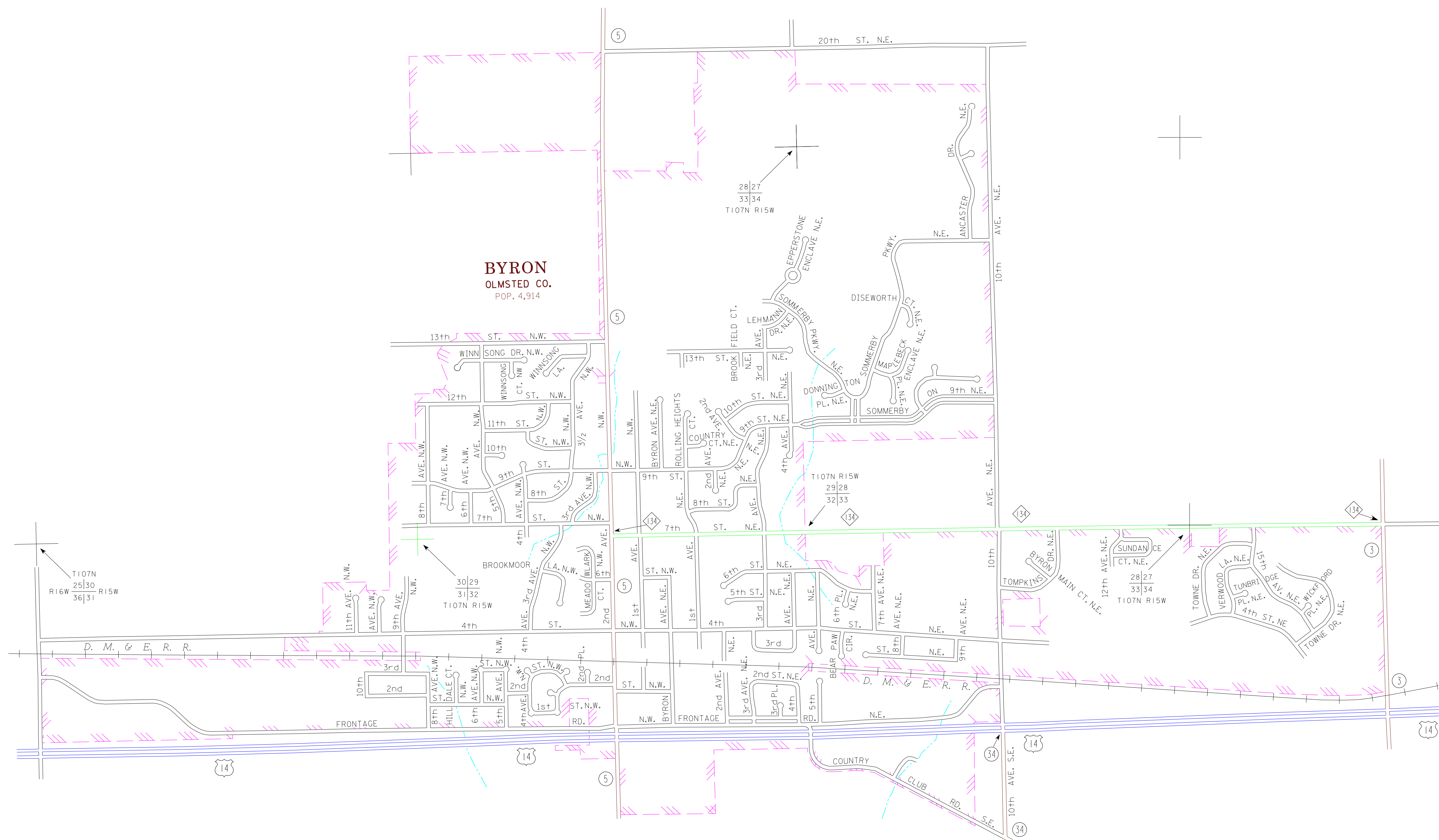


2010
BASIC DATA - 2009



LEGEND

- INTERSTATE TRUNK HIGHWAY..... (35)
- U.S. TRUNK HIGHWAY..... (14)
- STATE TRUNK HIGHWAY..... (55)
- COUNTY STATE AID HIGHWAY..... (23)
- COUNTY ROAD..... (34)
- CORPORATE LIMITS.....
- PUBLIC ROAD.....
- PRIVATE ROAD.....



BYRON
OLMSTED CO.
POP. 4,914

To request information from this document in an alternative format, call 651-366-4718 or 1-800-657-3774 (Greater Minnesota); 711 or 1-800-627-3529 (Minnesota Relay). You may also send an e-mail to ADRequest.dot@state.mn.us. (Please request at least one week in advance).