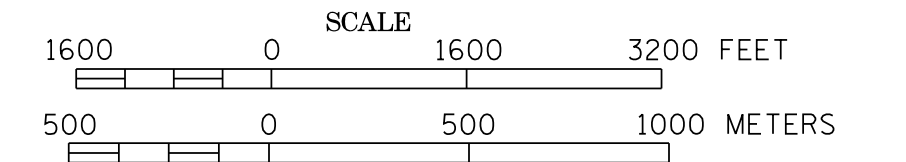
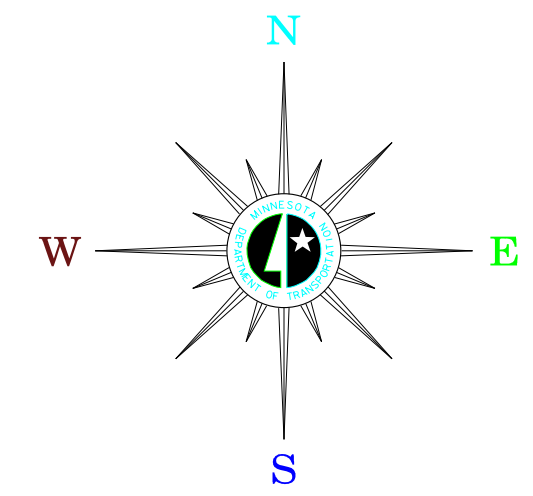


# MUNICIPALITY OF BUFFALO

PREPARED BY THE  
MINNESOTA DEPARTMENT OF TRANSPORTATION  
OFFICE OF TRANSPORTATION DATA & ANALYSIS  
IN COOPERATION WITH  
U.S. DEPARTMENT OF TRANSPORTATION  
FEDERAL HIGHWAY ADMINISTRATION



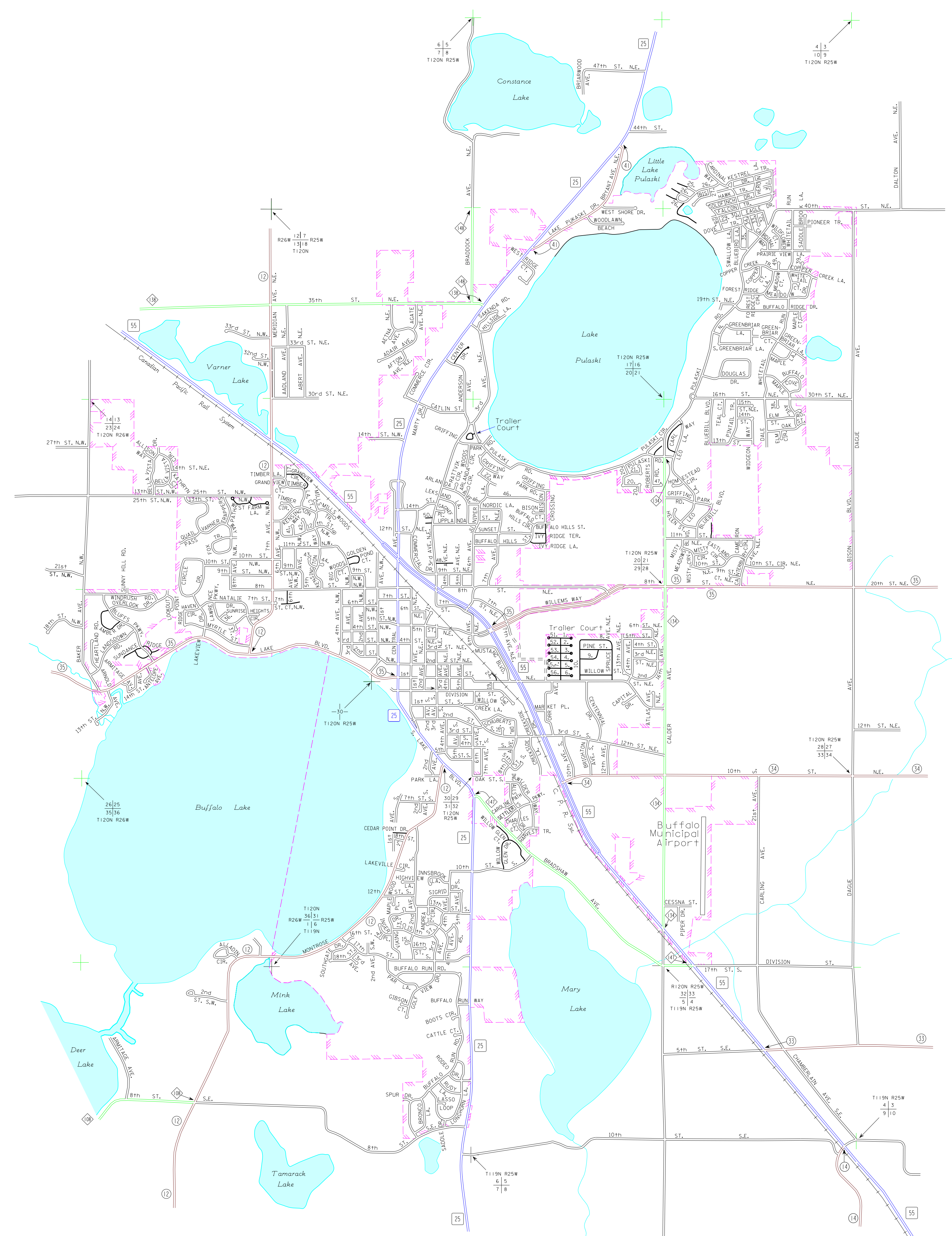
2011  
BASIC DATA - 2008



## LEGEND

- INTERSTATE TRUNK HIGHWAY..... (I-35)
- U.S. TRUNK HIGHWAY..... (US-16)
- STATE TRUNK HIGHWAY..... (ST-55)
- COUNTY STATE AID HIGHWAY..... (CSA-25)
- COUNTY ROAD..... (C-14)
- CORPORATE LIMITS.....
- PUBLIC ROAD.....
- PRIVATE ROAD.....

1. E. FIR ST.
2. E. ELM ST.
3. E. DOUGLAS ST.
4. E. CEDAR ST.
5. E. BIRCH ST.
6. E. ASH ST.
7. MANOR AVE.
8. WALNUT ST.
9. POPLAR ST.
10. ASPEN AVE.
11. SOO LA.
12. HIGHLAND LA.
13. KAREN CIR.
14. KRISTEN CIR.
15. ANNE CIR.
16. WILLOW CREEK CT.
17. GRANDVIEW AVE. N.W.
18. WILLOW CIR.
19. 7TH AVE. N.E.
20. LAKEVIEW PRKY.
21. LAKESIDE CIR.
22. HARTHORN AVE.
23. JUNIPER L.A.
24. SUMMIT DR.
25. KESTREL CT.
26. KESTREL CIR.
27. IBIS WAY
28. GOLDFINCH LA.
29. GOLDFINCH PL.
30. EAGLE PL.
31. FALCON LA.
32. CEDAR CREST LA.
33. EAGLE CT.
34. KINGFISHER LA.
35. ROBIN LA.
36. HONEY SUCKLE CIR.
37. SERENITY CIR.
38. CEDAR PL.
39. PLUM TREE CIR.
40. MAPLE CIR.
41. HEMLOCK CIR.
42. LILAC CIR.
43. HAZELWOOD CT.
44. HAZELWOOD CIR.
45. WAGON WHEEL CIR.
46. VENDELL ST.
47. ROBERTS CT.
48. ARCADIAN PL.
49. RASPBERRY CT.
50. RIDGE STONE PL.
51. W. FIR ST.
52. W. ELM ST.
53. W. DOUGLAS ST.
54. W. CEDAR ST.
55. W. BIRCH ST.
56. W. ASH ST.
57. CAMERON CIR.



To request information from this document in an alternative format, call 651-366-4718 or 1-800-657-3774 (Greater Minnesota); 711 or 1-800-627-3529 (Minnesota Relay). You may also send an e-mail to ADRequest.d@state.mn.us. (Please request at least one week in advance).