

HE ~~1122-84~~
HAC-005

STATEWIDE BRIDGE SURVEY FORM

MNDOT No.: 92366
Historic Name:
Common Name: Hanover Bridge
Owner: City of Hanover
Year Built: 1885
Engineer:
Fabricator: Morse Bridge Co.(?)
Contractor: Morse Bridge Co.

Location

15 447975 4999980

County: Hennepin
City/Town: Hanover C.
Legal Description: Section 36, Township 120N, Range 24W
Crossing: carries closed local road (Mun. 1) over Crow River

SE-SW-SW

Sketch Diagram

see attached field survey form

Technical Data

Category: steel through truss
Span No./Type: one metal pin-connected Pratt through truss main span, two timber stringer approach spans
Overall Width x Overall Length: 15.5' x 231'

Significance

Local x State ___ National ___
Historic Context: Metal Truss Bridges in Minnesota, 1870s-1942
Integrity: Excellent ___ Good x Fair ___ Poor ___
No. of Resources with Property: 1 contributing structure(s)
___ non-contributing structure(s)

Summary Description

Located on the east side of Hanover, just north of County Highway 19 and about one quarter mile east of its intersection with County Highway 123, this bridge carries a closed, unpaved, north-south road over the Crow River, connecting Wright and Hennepin counties. In March, 1885, the Wright County Committee on Roads and Bridges invited Hennepin County's Committee to meet along the Crow River to discuss proposed bridges. The following month, the commissions from the two counties jointly resolved to build two bridges over the river (one at Berning's and one, probably this one, at Hanover Brother's or Vollbrecht's) and to advertise for bids for same. Seventeen bridge contractors responded, and at the bid opening in May, the Morse Bridge Company's bid was lowest and that firm received the contract. Both bridges were satisfactorily completed by November.(A) The bridge consists of a metal, pin-connected, Pratt through truss main span and two timber stringer approach

Summary Description Continued

spans. The main span is supported by piers consisting of paired, cylindrical, concrete-filled, riveted steel plate caissons. The approach spans are supported by the piers and stone abutments with timber sills. The superstructure of the main span is comprised as follows: the upper chords consist of two steel channel sections riveted with a continuous steel top cover plate and batten plates along the lower flanges; the lower chords are punched steel eye-bars; the hip vertical members are forged steel eye-bars; the other verticals consist of two steel channel sections riveted with lacing bars; the diagonals are punched steel eye-bars; the counters are square steel turnbuckles. Eleven lines of timber stringers with bridging, which sit on the upper flanges of the floor beams, support the plank deck. The built-up floor beams, consisting of four steel angle sections riveted with a continuous steel plate web, are suspended from the superstructure by means of a steel plate hanging from the pin at the hip verticals and by means of U-bolts at the other panel points. Portal bracing consists of a latticed panel approximately at mid-height of each portal and of turnbuckles between the panel and the tops of the trusses.

Sources of Information

- A. Hennepin County Commissioners Record, 1885, p. 43, March 23; p. 44, April 6; p. 69, May 6; p. 74, May 7; p. 127, November 2.

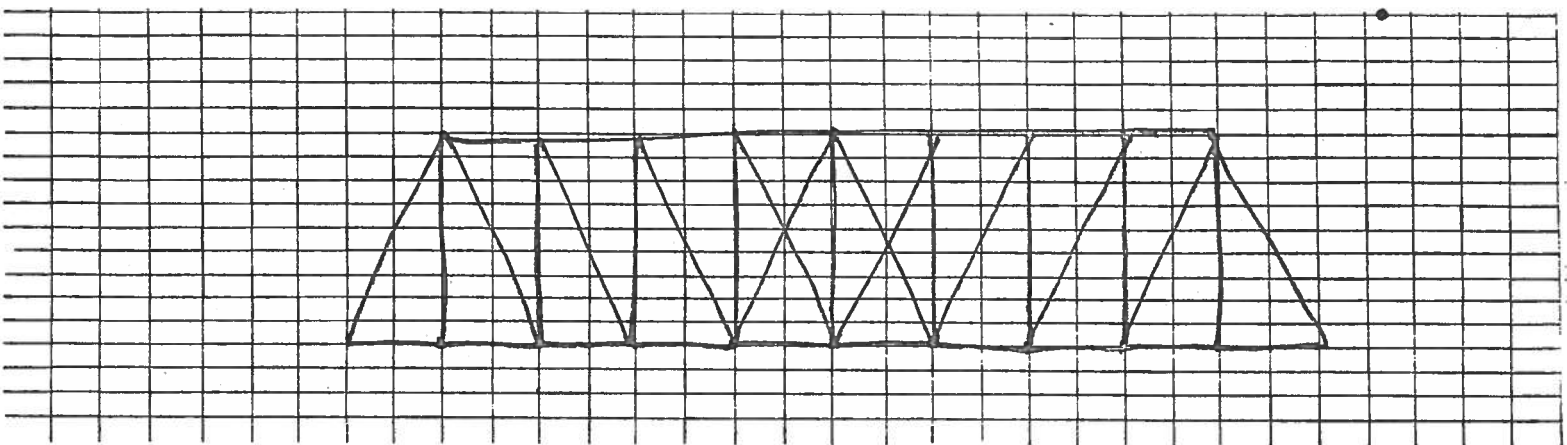
Date of Survey: October, 1987

Surveyor: Fredric L. Quivik
Architectural Historian
Renewable Technologies, Inc.
Butte, MT

COUNTY: _____ TOWNSHIP/CITY: LANOVER
 BRIDGE NAME: LANOVER BR. 92304
 LOCATION: E. EDGE OF TOWN N. OF 30

PLAQUE
MORSE BRIDGE CO.
YOUNGSTON, OHIO
1885
CARNEGIE STEEL

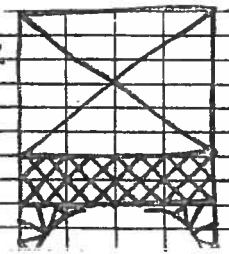
(APPROX) YR BLT: _____
 CARRIES _____ OVER _____
1 MAIN SPAN(S) PRATT THROUGH
 _____ APPROACH SPAN(S) _____
 _____ APPROACH SPAN(S) _____



MEMBER DESCRIPTION: LOWER CHORD: PUNCHED EYE-BARS
 SUPERSTRUCTURE: VERTICALS: HIP: WRAPPED EYE-BARS; OTHERS] [S&R. ROD TURN
 RAILING: TIMBER DIAGONALS: PUNCHED EYEBARS; COUNTERS] [CONT
 SUBSTRUCTURE: _____ UPPER CHORD: _____] [BATT
STONE ABUTS WITH TIMBER SILL N. END, CONCR. ABUT OVER ORIG. STONE
PAIRED CONCRETE-FILLED CYL. STEEL TIERS] ABUT S. END.
 TYPE of MOVABLE END ROLLERS, N. END

CONNECTIONS: FLOOR BM. TO SUPERSTR. LANNER PLATE BELOW PIN (HIP VERT)
 PANEL INTERSECTIONS PIN U-BOLTS (OTHERS)
 STRINGERS TO FLR. BM. SIT ATOP FL. BM.
 FLOOR SYSTEM: FLOOR BMS. BLT-UP GIRDER F F
 STRINGERS 11 LINES TIMBER STR WITH X-BRIDGING
 DECK PUNK

LATERAL BRACING: PORTAL SWAY FLOOR
 PORTAL 4 L WITH LATTICE
TORNBUCKLES, & LATTICE KNEE BR
 SWAY ANGLE X-BR.
 FLOOR RODS



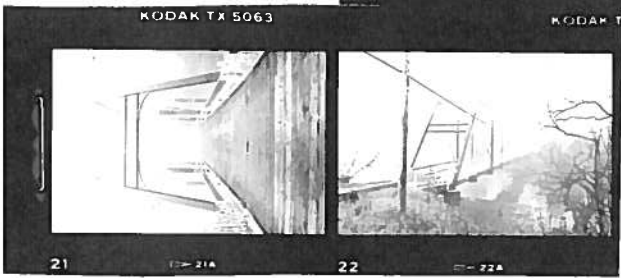
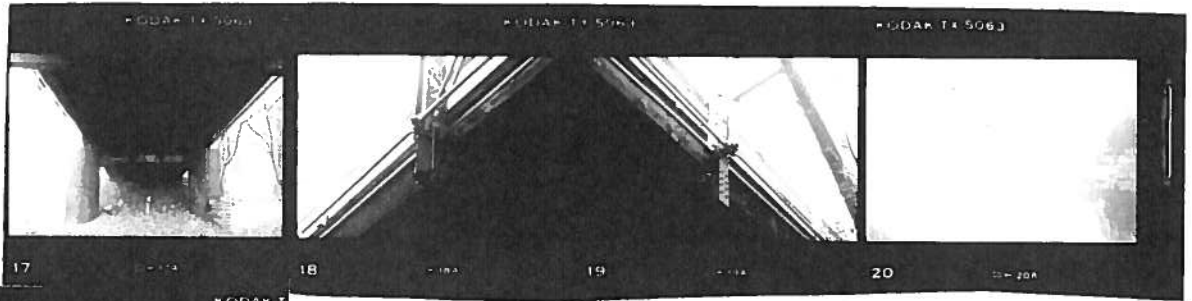
STATEWIDE BRIDGE SURVEY: PHOTO CONTACT SHEET RECORD, Br. No. 92366

Contact Sheet # 09153

November, 1987

Photographer: Fredric L. Quivik

Frame No.	Bridge No.	County	City/ Township	Subject	Camera Facing
17.	92366	Hennepin	Hanover C.	north caissons	N
18.	"	"	"	U-bolt at most verticals	SW
19.	"	"	"	riveted hanger at hip verticals	NW
20.	"	"	"	east elevation	W
21.	"	"	"	portal view	N
22.	"	"	"	3/4 view	NW



CITY OF HANOVER
11250 - 5TH STREET N.E.
HANOVER, MINNESOTA 55341
(612) 497-3777

September 3, 1986

TO: Gerry Sikorski, 6th District
Tad Jude, State Senator
E.S. Robb, Hennepin County Commissioner
Sam S. Sivanich, Hennepin County Commissioner
Michelle Bogenreif, Wright County Commissioner
Dennis Gimmestad, Minnesota Historical Society
John Baule, Executive Director Hennepin County Historical Society
Joyce Swenson, President, Wright County Historical Society
Mark B. Dayton, Commissioner, MN DEED
Richard Scherman, Executive Director, NW Hennepin League

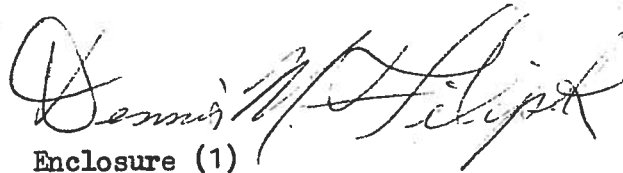
FROM: Dennis Filipek, Chairman
Hanover Bridge Commission

RE: Hanover Historic Bridge

We are enclosing a recent article from the Crow River News of the Hanover Historic Bridge. We are grateful to those people mentioned in the article for their interest and support.

We will be having a meeting on September 11th at 7 p.m. at the Hanover City Hall. We will be having some community discussion on the history of this 101 year old bridge as well as discussion about it's future. Our engineer will present some preliminary restoration plans for our review.

We hope that all of you who may have an interest in preserving the bridge in order to maintain it's historic significance will join us on September 11th.

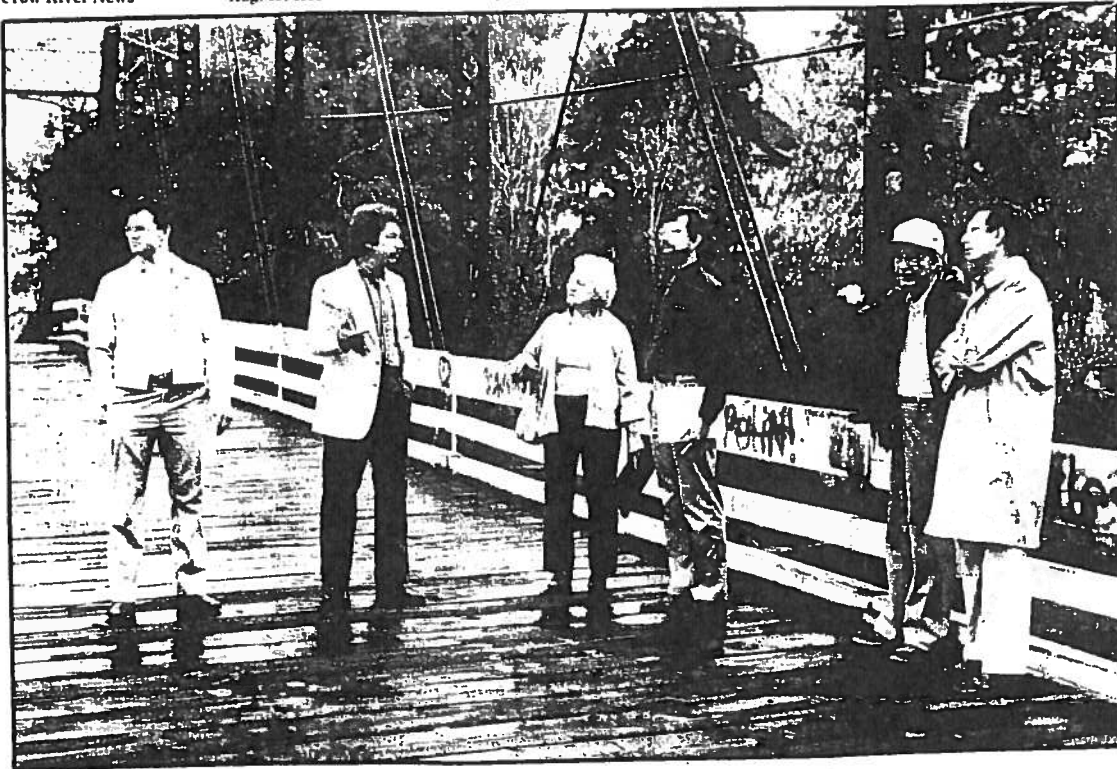


Dennis M. Filipek

Enclosure (1)

cc: Council (5)

DF/jz



Several local officials got together Wednesday, Aug. 13 on the historic Hanover bridge to discuss possible plans for the restoration of the bridge.

On hand for the discussion were (left to right) Hanover City Engineer Norm Gartner, Hanover City

Council member Dennis Filipek, Wright County Historical Society president Joyce Swenson, Hennepin County Historical Society executive director John Baule, Hanover resident Wally Volbrecht, and state senator Tad Jude.

In Hanover

Interest in bridge grows officials eye next steps

by
Patty Wiederich
Interest in the repair and restoration of the historic bridge in Hanover is snowballing.

The latest development in efforts to make the restoration of the bridge a reality resulted in a meeting of several local officials on the bridge Wednesday, Aug. 13.

Work on maintaining the bridge has largely been the work of Hanover City Council member Dennis Filipek, who has organized meetings to drum up support for the restoration of the bridge.

ASSET

Filipek's contention is that the bridge, which has gradually become a potential liability for Hanover, could become an asset. He said he has talked with many Hanover residents, seeking their input and support for the project.

The main concerns with the bridge now hinge on safety concerns. Filipek said he has talked with juveniles who hang out around the bridge, residents who live near it, and law enforcement officials.

From stories he has gleaned from those sources, Filipek said he has heard of kids who will scale the bridge, walk across the top of the structure, and then jump into the waters of the Crow River. The bridge draws the city's youth, he said, noting that without lighting and other safety measures, potential for a tragedy exists.

Filipek outlined some ideas he has for work on the bridge, including replacing wooden side

rails that are becoming weakened in some spots. Spaces between the slats in the rails could also be remedied, Filipek said, to prevent anything that might happen if a small child slipped between them.

HISTORIC VALUE

Besides the safety concerns associated with the bridge, there is also a historical significance. The 101-year-old bridge is the oldest existing link between Hennepin and Wright counties. Filipek said interest in the bridge is growing as more and more residents draw on their and their parents' memories of the bridge.

At the meeting Wednesday, Filipek talked of his plans for the bridge, and got feedback from representatives of the Hennepin and Wright county historical societies. Hanover City Engineer Norm Gartner, resident Wally Volbrecht and Minnesota State Senator Tad Jude were also on hand.

John Baule, executive director of the Hennepin County Historical Society, and Joyce Swenson, president of the Wright County Historical Society, listened to Filipek's comments and seemed enthusiastic about the possibilities that renovation of the bridge could offer.

"I could see the bridge become a very positive thing for Hanover," Filipek said. "Hanover really needs something like this."

POTENTIAL

Swenson said she could also see the value of the restoration, and

added that while it may appear that interest in the bridge has faded, such a project may be just the spark to ignite more community interest and pride in the bridge.

If it came down to whether or not the bridge should be maintained at all, she said, she feels that Hanover residents would strongly support the maintenance of the bridge.

The situation, she said, has a lot of similarities to the time the Hennepin County Historical Society considered moving the Burschville school to Brooklyn Park to get more use out of it. Although the school had not drawn a lot of community interest in the past, residents turned out in full force to oppose having the school moved.

MEETING

To draw on the stories and pictures that residents may have of the bridge, Filipek has set up a "swap meeting" for 7 p.m. Thursday, Sept. 11 at Hanover City Hall.

Residents will be encouraged to bring any memories, stories, pictures or other documentation of the bridge's earlier days to share with others. With that information, Filipek said he felt he would be better armed to get even more support for the project.

Baule said he could see the advantages of having the bridge undergo a facelift. He made a couple of suggestions about the types of rails that could be used, and of-

fered to check into the suppliers of some certain materials for Filipek.

Strengths of the bridge, however, were identified by both Baule and Jude. Although it will probably never be used for heavy traffic again — the bridge is supposed to be limited to light traffic and non-motorized vehicles — the bridge is structurally sound and it is aesthetically pleasing.

Residents interested in the bridge project should contact Filipek by writing to him at Hanover City Hall, or by leaving a message for him at the City Hall number, 497-3777.

CITY OF HANOVER
11250 - 5TH STREET N.E.
HANOVER, MINNESOTA 55341
(612) 497-3777

MAYOR •
Maxine Ladda
CLERK-TREASURER
Gail Lippert
COUNCIL MEMBERS
Robert Dixon, Jr.
Dennis Filipek
Barbara Irvine
Tim Zimmerman

August 6, 1986

Mr. John Baule, Executive Director
Hennepin County Historical Society
2303 3rd Avenue South
Minneapolis, MN 55404

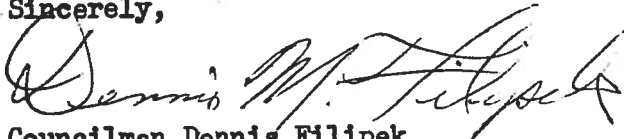
Dear Mr. Baule:

After discussion of Hanover's Historic Bridge with Commissioner Sam Sivanich, I was referred to Mr. C. Blaine Harstab who in turn had suggested I contact your office. I was very pleased with your prompt response.

For your information, I am enclosing a clipping from the August 5th issue of the Crow River News.

I will be calling you next week with an open calendar for your convenience. I would like to arrange a time we, and a few concerned citizens, could meet on the Bridge.

Sincerely,



Councilman Dennis Filipek
Chairman, Hanover Bridge Commission

Enclosure (1)

cc: Commissioner Sam Sivanich
C. Blaine Harstab
Superintendent, National Register of Historic Places
Minnesota Historical Society
Wright County Historical Society
Commissioner, Bud Robb

Hanover bridge study sought

The condition of the historic bridge in Hanover has prompted one city council member to take action.

Hanover City Council member Dennis Filipek is working for the repair and renovation of the historic bridge, which, at 100 years old, is the oldest existing link between Wright and Hennepin counties.

PROBLEMS

"Present conditions are physically and cosmetically unacceptable," Filipek said. He added that he feels that the bridge is, in its present condition, a hazardous area, especially for small children who may slip between slats of the railings on the bridge.

Other problems with the bridge include the weakness of the railings — most are rather wobbly — and a lot of graffiti in language as colorful as the paint used for them.

Filipek said he wants to get the city behind a project to restore the bridge so it can be a plus for Hanover. He said he would like to have the bridge improved not only for the aesthetics it would bring to Hanover, but also to preserve the bridge as a historic marker.

Filipek is not blaming anyone for the disrepair of the bridge, feeling instead that it has reached its current state very gradually. "Some things, with the passing of time, become more acceptably neglected," he said.

"But in the case of historic importance, this bridge must be preserved," he added, pointing out that the bridge is registered with the federal government and with the state.

MEETING

To spark more community interest in the preservation of the bridge, Filipek will be calling for a meeting of any interested individuals on the bridge during the first week of September.

At the meeting, Filipek wants to review the study done on the bridge, and to get some idea of the amount of donations residents of Hanover and the surrounding area would like to make for the bridge's restoration. (Watch future editions of the Crow River News for a final date on that meeting.)

Filipek said he sees the project as a chance for some real community action in Hanover, with the possible support of the federal, state and local governments. Restoration of the bridge, he said, could be a real show of community pride.

PROJECT

Items that would need attention at the bridge include painting and basic repairs, and making the fences and rails to make the bridge

safer. He would also like to add lighting to the bridge for night safety and for appearances.

Community response to his ideas has been pretty well received, Filipek said, noting that more than half of the people he and council member Tim Zimmerman had talked to about the project were in favor of it.

The Minnesota Historical Society and the Hennepin County Historical Society have also both shown interest, he said.

Persons who would like more information about his plans or who would like to be involved in the project are asked to contact Hanover City Hall, writing to the attention of Dennis Filipek, chairman of the Hanover Bridge Commission. Messages can also be left at city hall for Filipek by calling 497-3777.



Hanover City Council member Dennis Filipek (right) and Hanover City Engineer Norm Gartner discussed possible project plans for the historic bridge in Hanover.

United States Senate

WASHINGTON, D.C. 20510

October 16, 1975

Mr. Russell Fridley
Minnesota Historical Society
690 Cedar
St. Paul, Minnesota

Dear Russell:

Attached is a letter which I have received from one of my constituents concerning a matter which I think you might be able to help solve.

Mrs. Lila Wiese writes about two historical sites in the Hanover area -- the old bridge and the dam site.

I will appreciate knowing the possibilities of funds to repair these two facilities. In responding to me, please return the constituent's letter along with your response and mark the envelope to the attention of my assistant, Mr. Fred L. Gates, 462 Federal Courts Building, Minneapolis 55401.

Thank you for your cooperation and assistance.

Sincerely,


Hubert H. Humphrey

mm 55341

United States Department of the Interior
National Park Service

National Register of Historic Places Continuation Sheet

Section number _____ Page _____

Note: These changes apply to
Hanover Bridge in Wright County,
Minnesota.

REFERENCE NUMBER: 79001268

STATE: MINNESOTA

COUNTY: Wright

RESOURCE NAME (HISTORIC):

CITY:

VICINITY OF:

ADDRESS: off Co. Hwy. 19 over Crow River

CERTIFICATION DATE:

REMOVED DATE:

COMMENTS: Property is also located in Hennepin County.

Nina M. Archabal

Nina M. Archabal
State Historic Preservation Officer

JUN 17 1988

Date