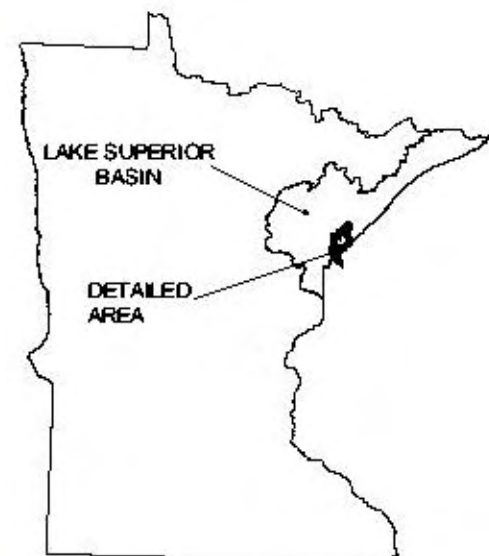
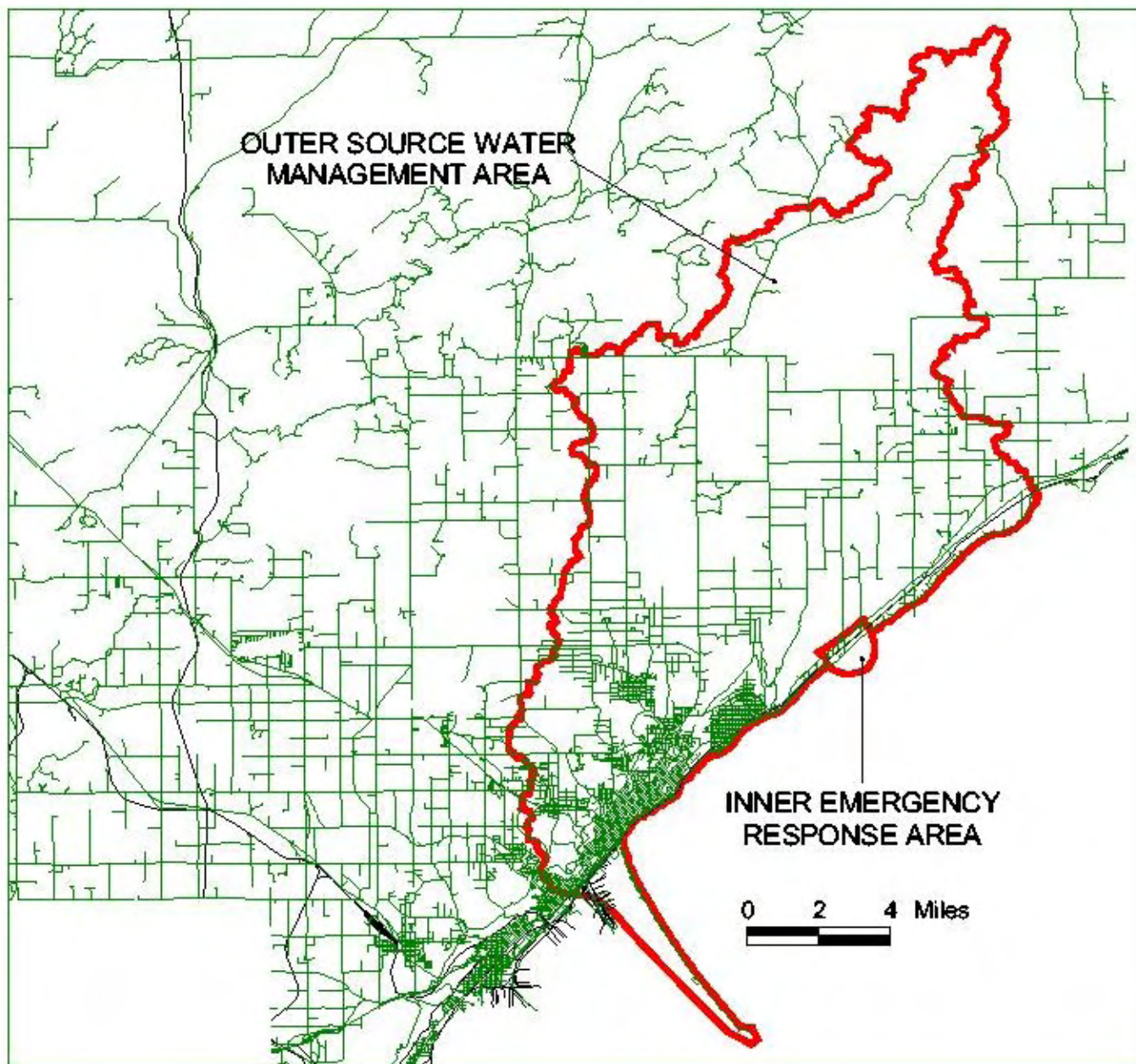


Appendix C: Source Water Protection Areas

- District 1 – Duluth Area
- District 2 – East Grand Forks
- District 3 – St. Cloud Area
- District 4 – Moorhead
- District 6 – Rochester

District 1 – Duluth Area

SOURCE WATER ASSESSMENT AREA FOR THE CITY OF DULUTH

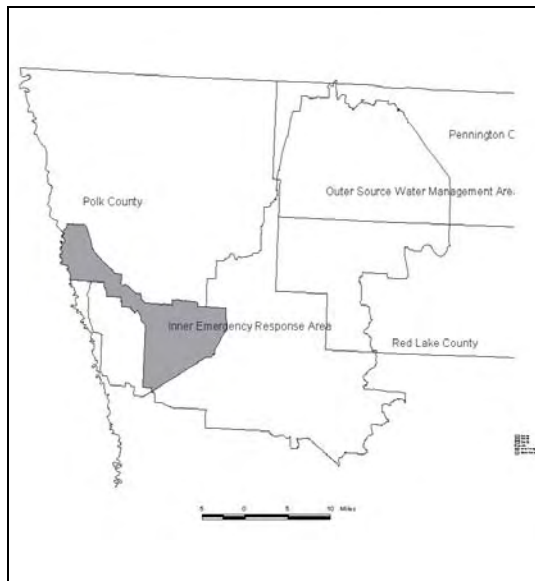


State-wide Inset Map

Prepared by the
Minnesota Department of Health
June, 2002

District 2 – East Grand Forks

**FIGURE 1
EAST GRAND FORKS
SOURCE WATER ASSESSMENT AREA**

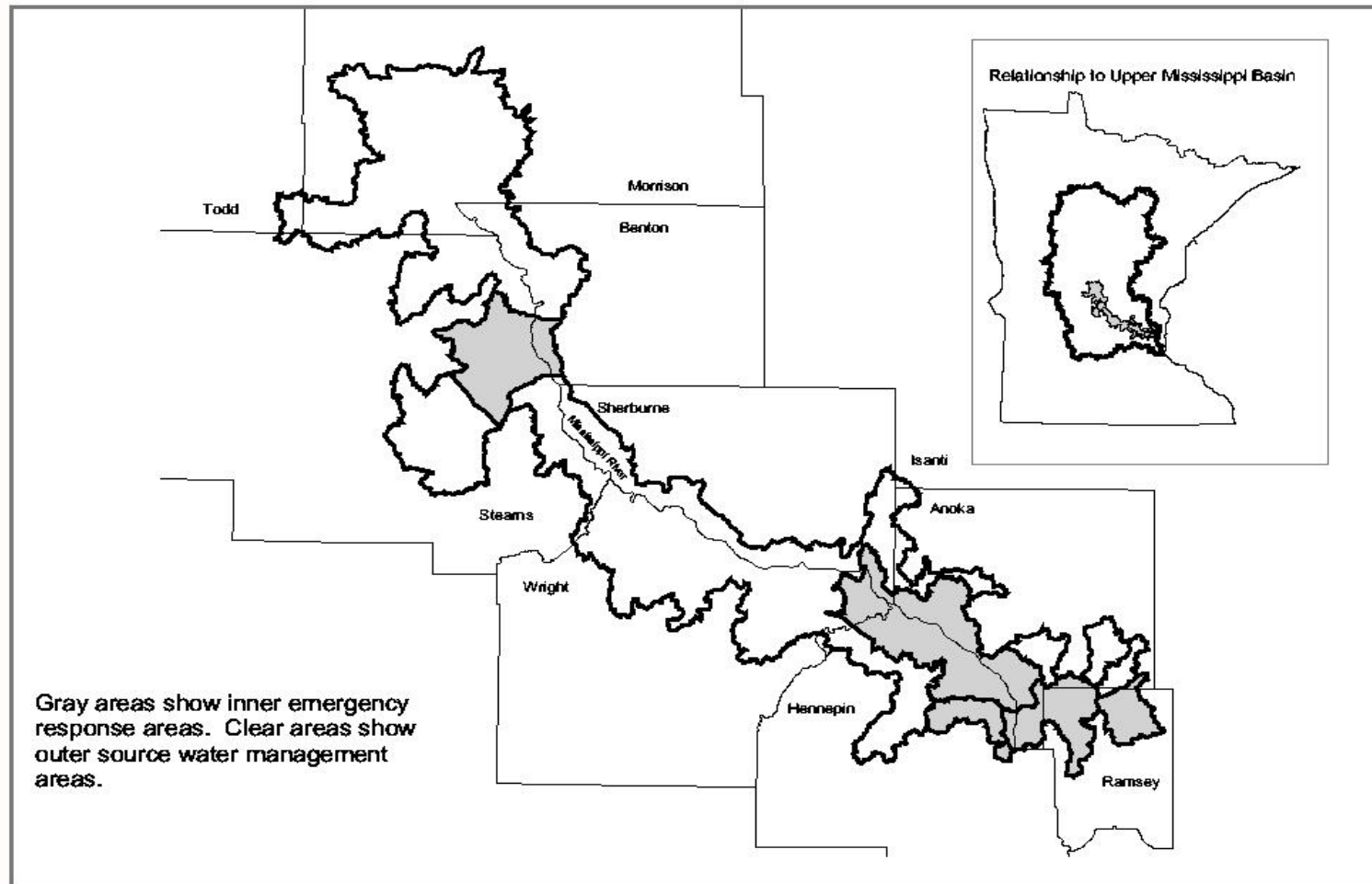


**FIGURE 2
EAST GRAND FORKS
SOURCE WATER ASSESSMENT AREA – ENTIRE WATERSHED**



District 3 – St. Cloud Area

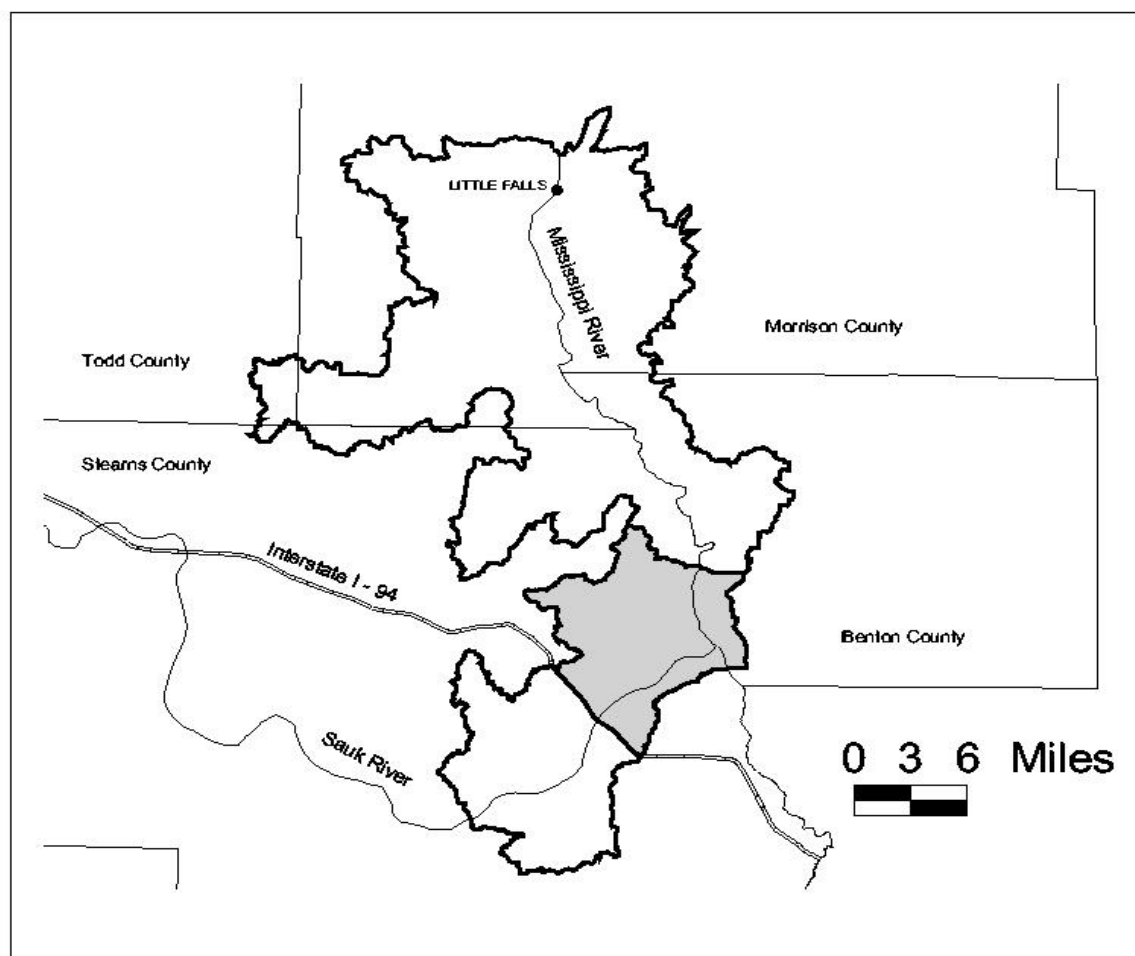
COMPOSITE SOURCE WATER ASSESSMENT AREAS FOR THE MISSISSIPPI RIVER





Prepared by the Minnesota Department of Health August, 2001

FIGURE 2
COMPOSITE SOURCE WATER AREAS FOR THE CITIES OF ST. CLOUD, ST. PAUL, AND MINNEAPOLIS

SOURCE WATER ASSESSMENT AREAS FOR THE CITY OF ST. CLOUD

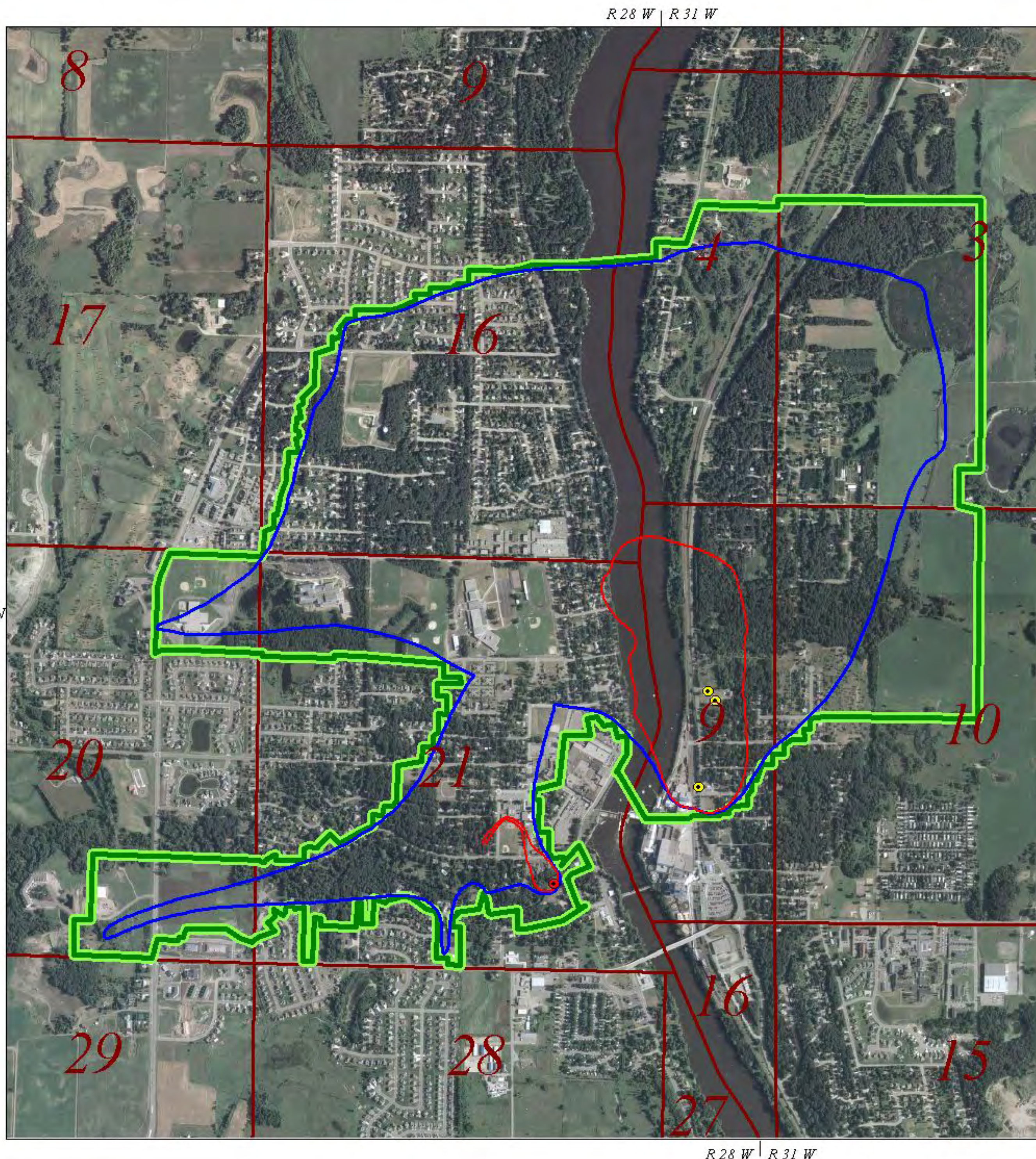


Source Water Assessment Areas

-  Inner Emergency Response Area
-  Outer Source Water Management Area

Prepared by
Minnesota Department of Health
August, 2001

FIGURE 1
SOURCE WATER ASSESSMENT AREAS FOR THE CITY OF ST. CLOUD



Sartell East

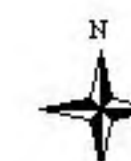
Drinking Water Supply Management Area (DWSMA) MN-00317 10 year Time of Travel

Public Water Supply Well

- Primary
- Emergency
- Emergency Management Zone
- Wellhead Protection Area (WHPA)
- DWSMA

Variable Vulnerability

0.2 0 0.2 Miles



Approved October 12, 2004

R 29 W | R 28 W

Sartell North

Drinking Water Supply Management Area (DWSMA) MN-00316 10 year Time of Travel

Public Water Supply Well

● Primary

Emergency Management Zone

Wellhead Protection Area (WHPA)

Groundwater Capture Zone

DWSMA

Variable Vulnerability

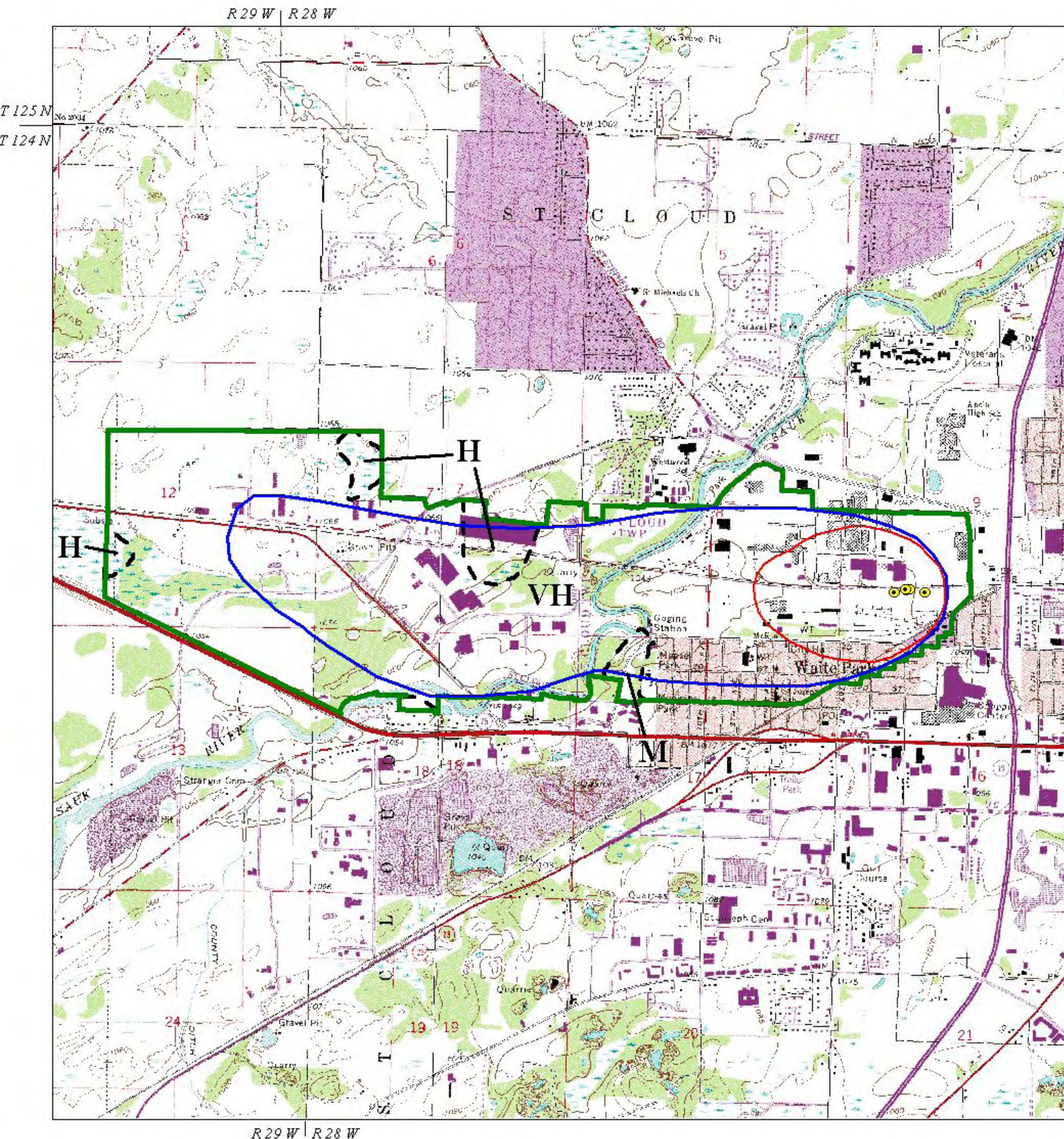
0.5 0 0.5 Miles



Approved October 12, 2004

T 126 N
T 125 N

R 29 W | R 28 W



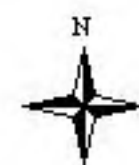
Waite Park

Drinking Water Supply Management Area (DWSMA) MN-00131 10 year Time of Travel

- Public Water Supply Well
- Emergency Management Zone
- Wellhead Protection Area (WHPA)
- DWSMA
- DWSMA Vulnerability Boundary

VH = Very High Vulnerability
H = High Vulnerability
M = Moderate Vulnerability

0.5 0 0.5 Miles



Approved March 22, 2002

R 28 W | R 31 W

Sauk Rapids

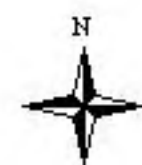
Drinking Water Supply Management Area (DWSMA) MN-00101 10 year Time of Travel

Public Water Supply Well

- Primary
- Emergency Management Zone
- Wellhead Protection Area (WHPA)
- Groundwater Capture Zone
- DWSMA

H = High Vulnerability

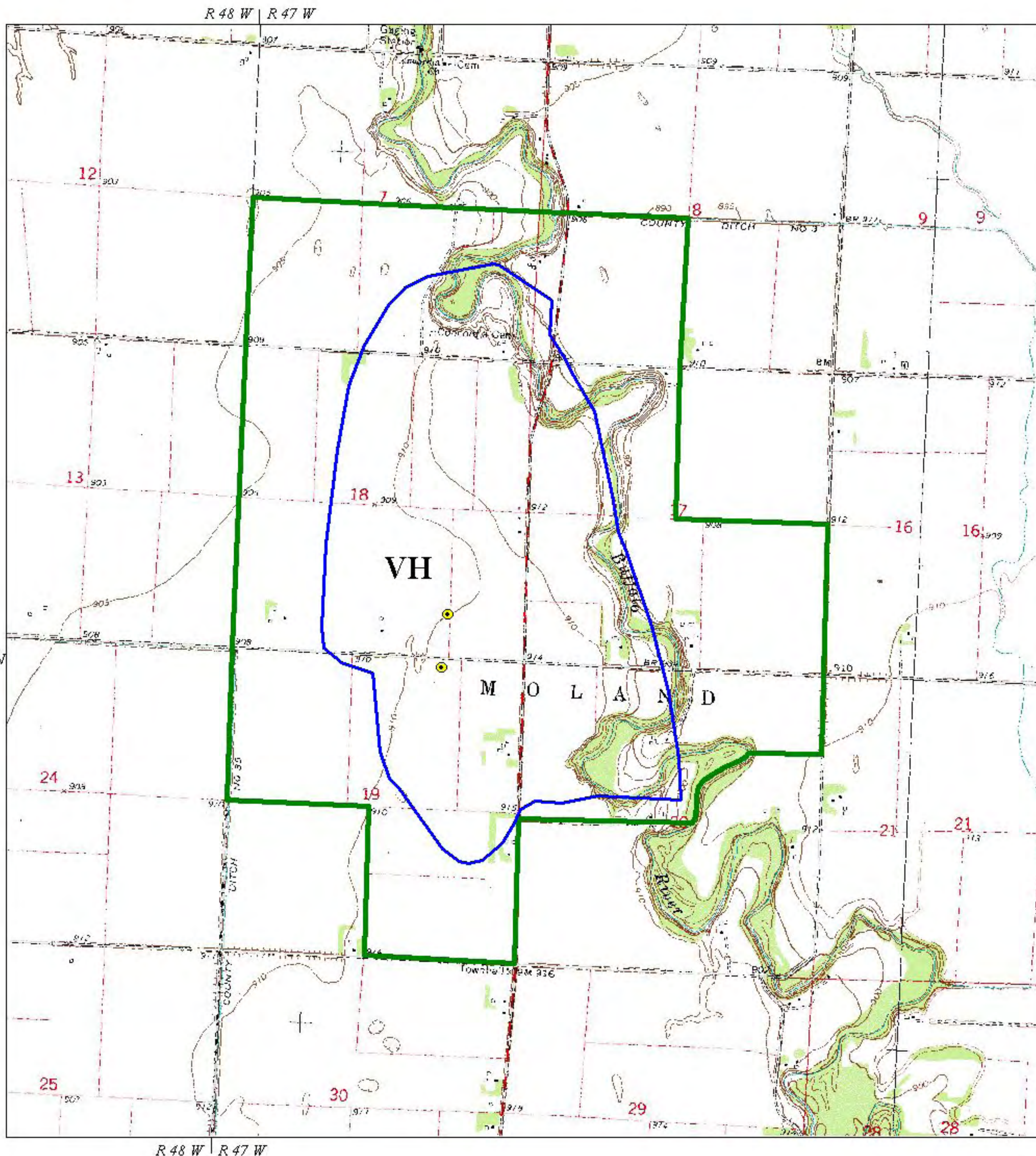
0.4 0 0.4 Miles



Approved July 26, 2001

R 28 W | R 31 W

District 4 – Moorhead



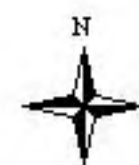
Moorhead NE

Drinking Water Supply Management Area (DWSMA) MN-00156 10 year Time of Travel

- Public Water Supply Well
- Wellhead Protection Area (WHPA)
- DWSMA

VH = Very High Vulnerability

0.3 0 0.3 Miles



Approved January 4, 2002

R 48 W

T 140 N
T 139 N

T 140 N
T 139 N

R 48 W

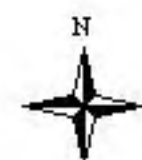
Moorhead 6

Drinking Water Supply Management Area (DWSMA) MN-00154 10 year Time of Travel

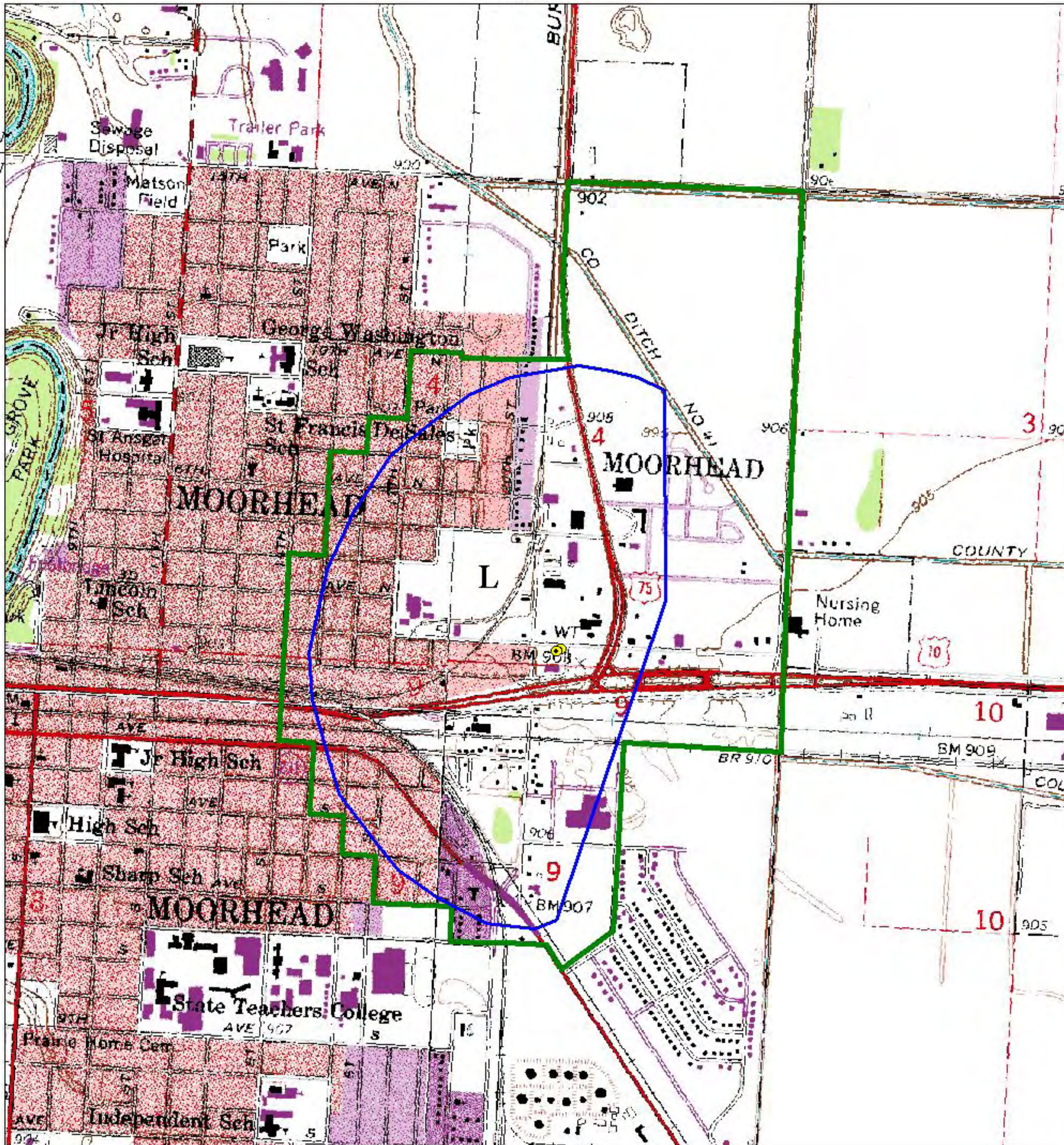
- Public Water Supply Well
- Wellhead Protection Area (WHPA)
- DWSMA

L = Low Vulnerability

0.2 0 0.2 Miles



Approved January 4, 2002



District 6 – Rochester

R 14 W

Rochester 26

*Drinking Water Supply
Management Area
(DWSMA) MN-00310
50 year Time of Travel*

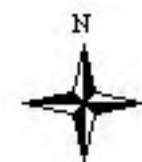
Public Water Supply Well

- Primary
- Emergency

- Emergency Management Zone
- Wellhead Protection Area (WHPA)
- Groundwater Capture Zone
- DWSMA
- DWSMA Vulnerability Boundary

H = High Vulnerability
M = Moderate Vulnerability
L = Low Vulnerability

0.3 0 0.3 Miles



Approved September 29, 2004

R 14 W

R14 W

Rochester 31

Drinking Water Supply Management Area (DWSMA) MN-00311 50 year Time of Travel

Public Water Supply Well

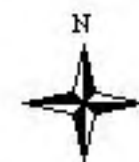
- Primary
- Emergency Management Zone
- Wellhead Protection Area (WHPA)
- Groundwater Capture Zone
- DWSMA
- DWSMA Vulnerability Boundary

T 106 N

T 106 N

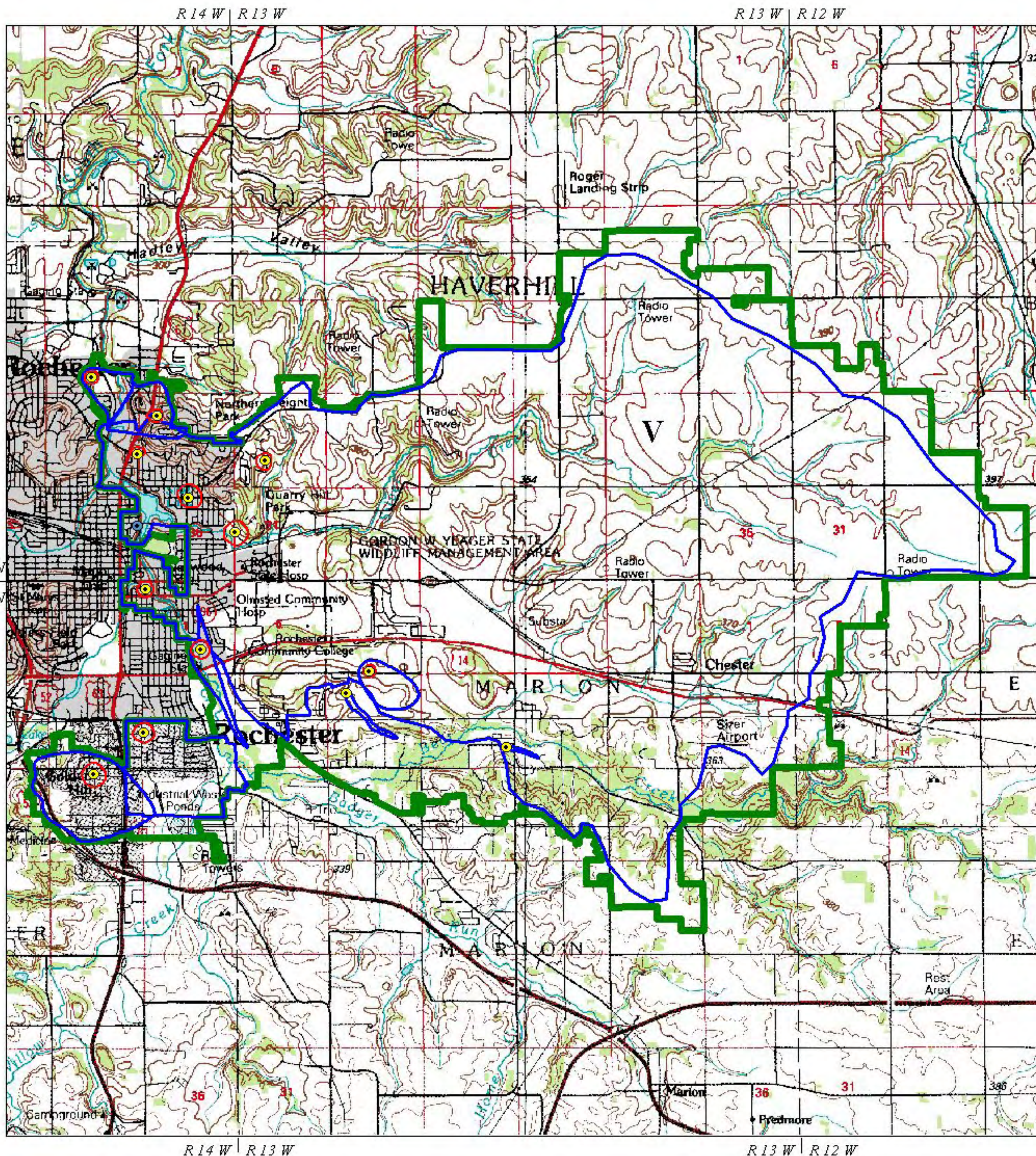
H = High Vulnerability
M = Moderate Vulnerability
L = Low Vulnerability

0.4 0 0.4 Miles



Approved September 29, 2004

R14 W



Rochester East

Drinking Water Supply Management Area (DWSMA) MN-00306

50 year Time of Travel

Public Water Supply Well

● Primary

● Seasonal

Emergency Management Zone

Wellhead Protection Area (WHPA)

DWSMA

V = Variable Vulnerability

2 0 2 Miles



Approved September 29, 2004

R 14 W

Rochester North

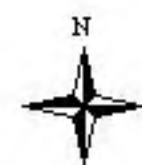
Drinking Water Supply Management Area (DWSMA) MN-00308 50 year Time of Travel

Public Water Supply Well

- Primary
- Emergency Management Zone
- Wellhead Protection Area (WHPA)
- Groundwater Capture Zone
- DWSMA

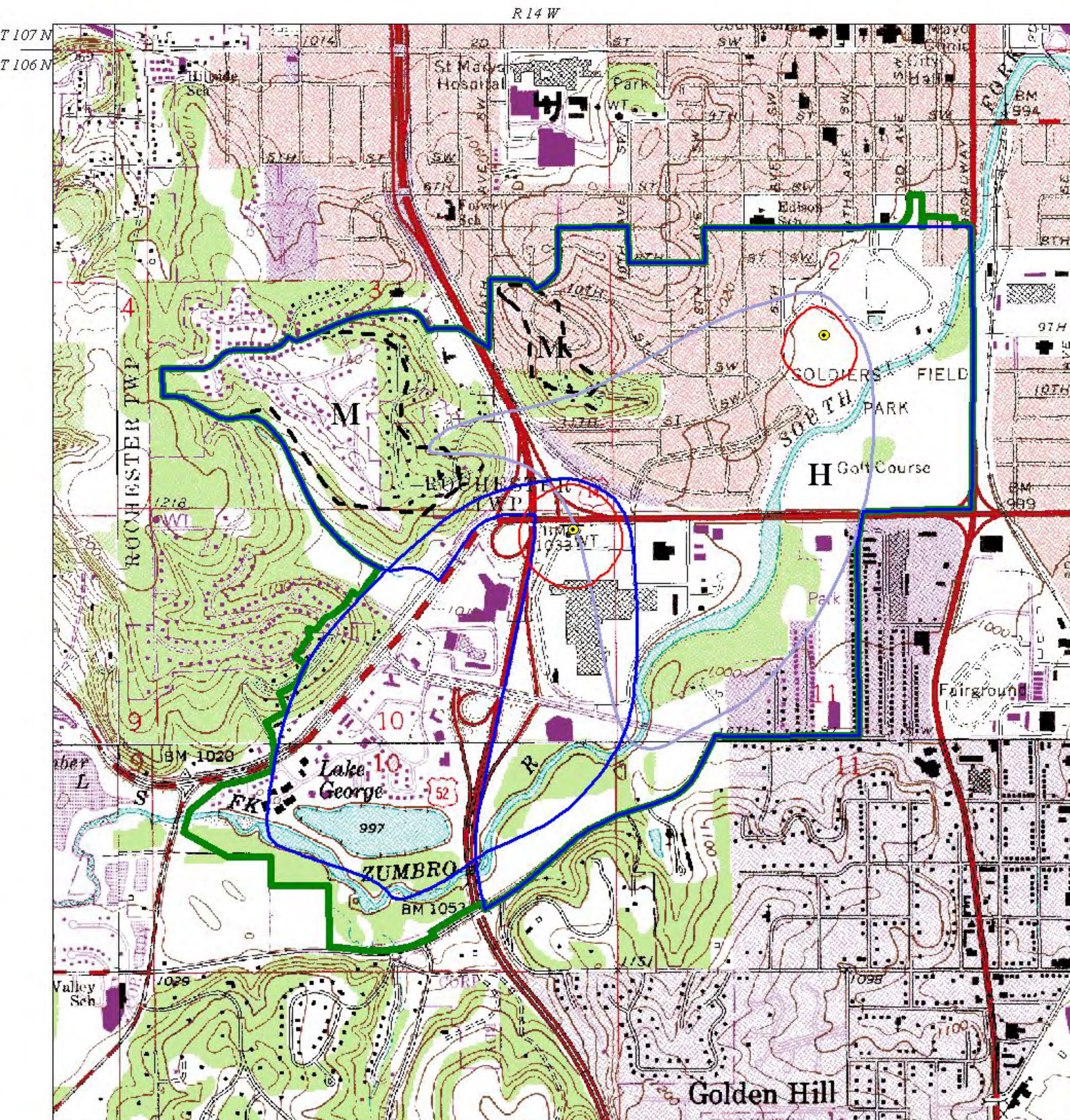
V = Variable Vulnerability

0.7 0 0.7 Miles



Approved September 29, 2004

R 14 W



Rochester Soldiers Field Park

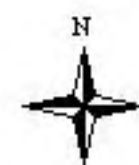
*Drinking Water Supply
Management Area
(DWSMA) MN-00307
50 year Time of Travel*

Public Water Supply Well

- Primary
- Emergency Management Zone
- Wellhead Protection Area (WHPA)
- Groundwater Capture Zone
- DWSMA
- DWSMA Vulnerability Boundary

H = High Vulnerability
M = Moderate Vulnerability

0.3 0 0.3 Miles



Approved September 29, 2004

R14 W

Rochester West

Drinking Water Supply Management Area (DWSMA) MN-00309 50 year Time of Travel

T 107 N
T 106 N

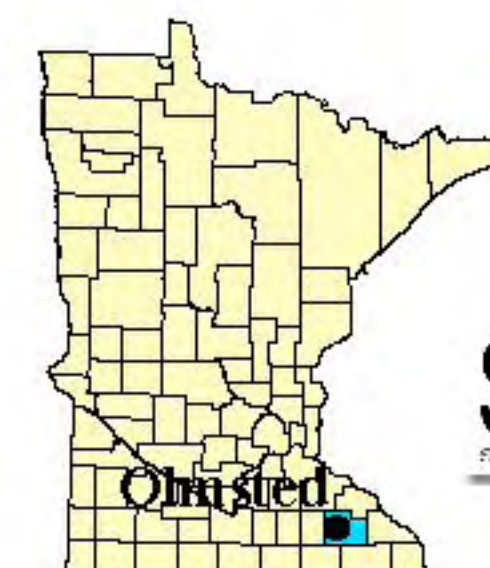
T 107 N
T 106 N

Public Water Supply Well

- Primary
- Emergency Management Zone
- Wellhead Protection Area (WHPA)
- Groundwater Capture Zone
- DWSMA
- DWSMA Vulnerability Boundary

H = High Vulnerability
M = Moderate Vulnerability

0.5 0 0.5 Miles





Approved September 29, 2004

R14 W

R 13 W

Onyx Waste Services

*Drinking Water Supply
Management Area
(DWSMA) MN-00321
10 year Time of Travel*

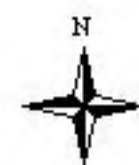
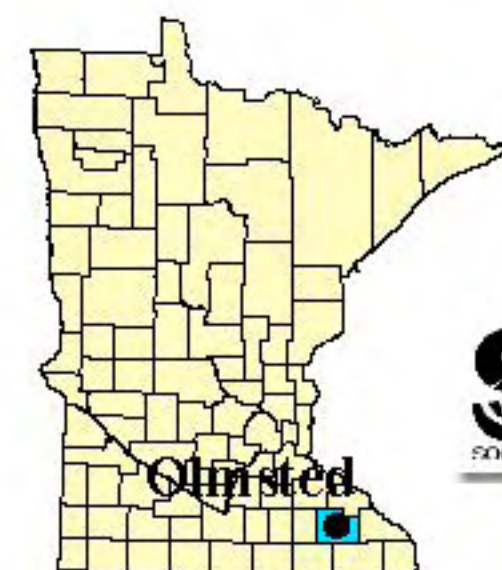
 DWSMA Boundary
 DWSMA Vulnerability Boundary

T 106 N

T 106 N

H = High Vulnerability
M = Moderate Vulnerability
L = Low Vulnerability

0.1 0 0.1 Miles



Approved November 10, 2004

R 13 W

R14 W

T107 N
T106 N

Associated Milk Producers, Inc.

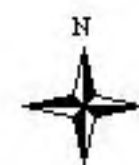
T107 N
T106 N

Drinking Water Supply Management Area (DWSMA) MN-00315 10 year Time of Travel

 DWSMA Boundary

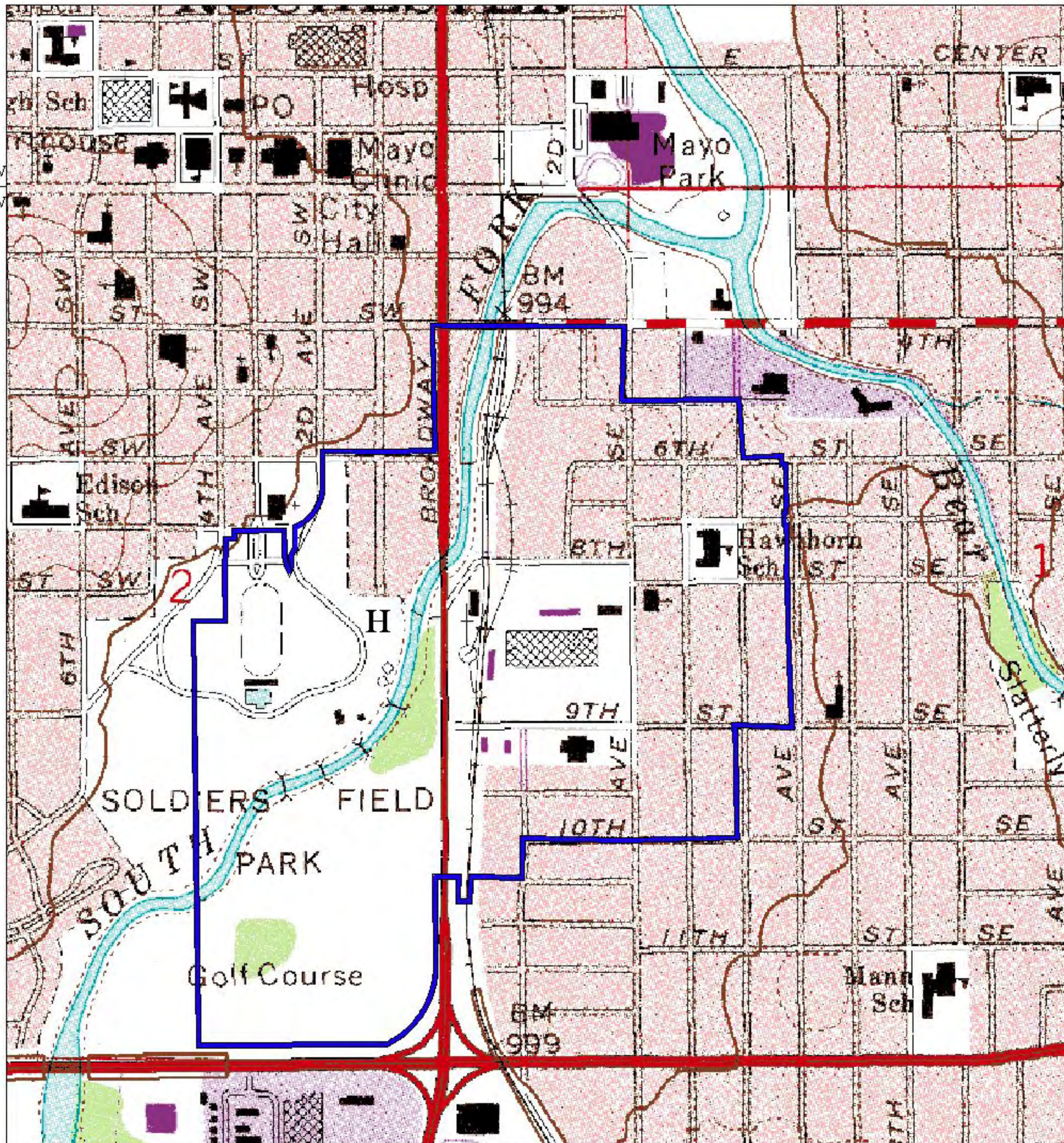
H = High Vulnerability

0.2 0 0.2 Miles




Approved October 5, 2004

R14 W



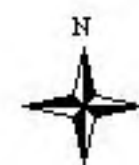
***Drinking Water Supply
Management Area
(DWSMA) MN-00298
10 year Time of Travel***



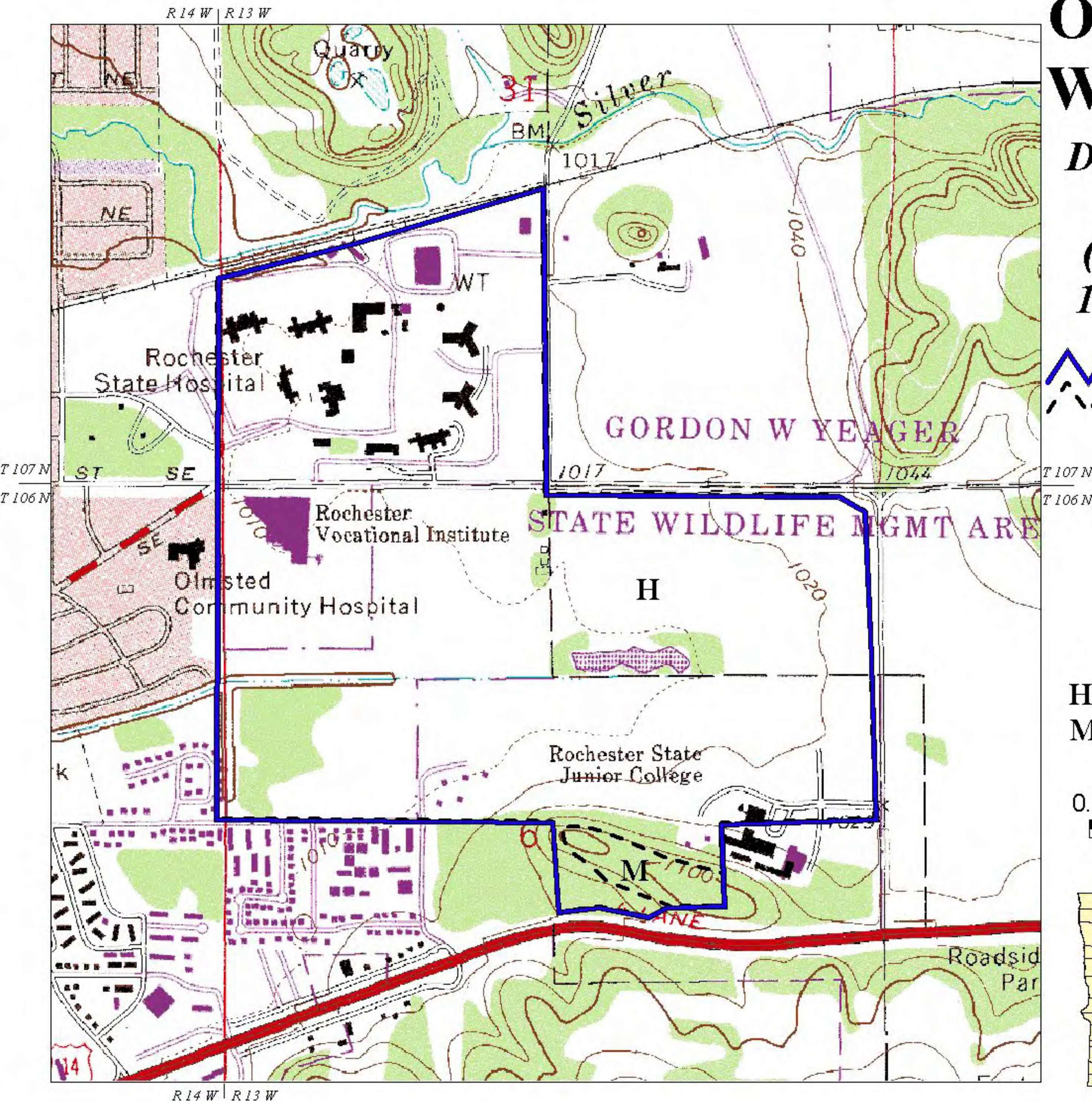
DWSMA Boundary
DWSMA Vulnerability Boundary

H = High Vulnerability
M = Moderate Vulnerability

0.2 0 0.2 Miles



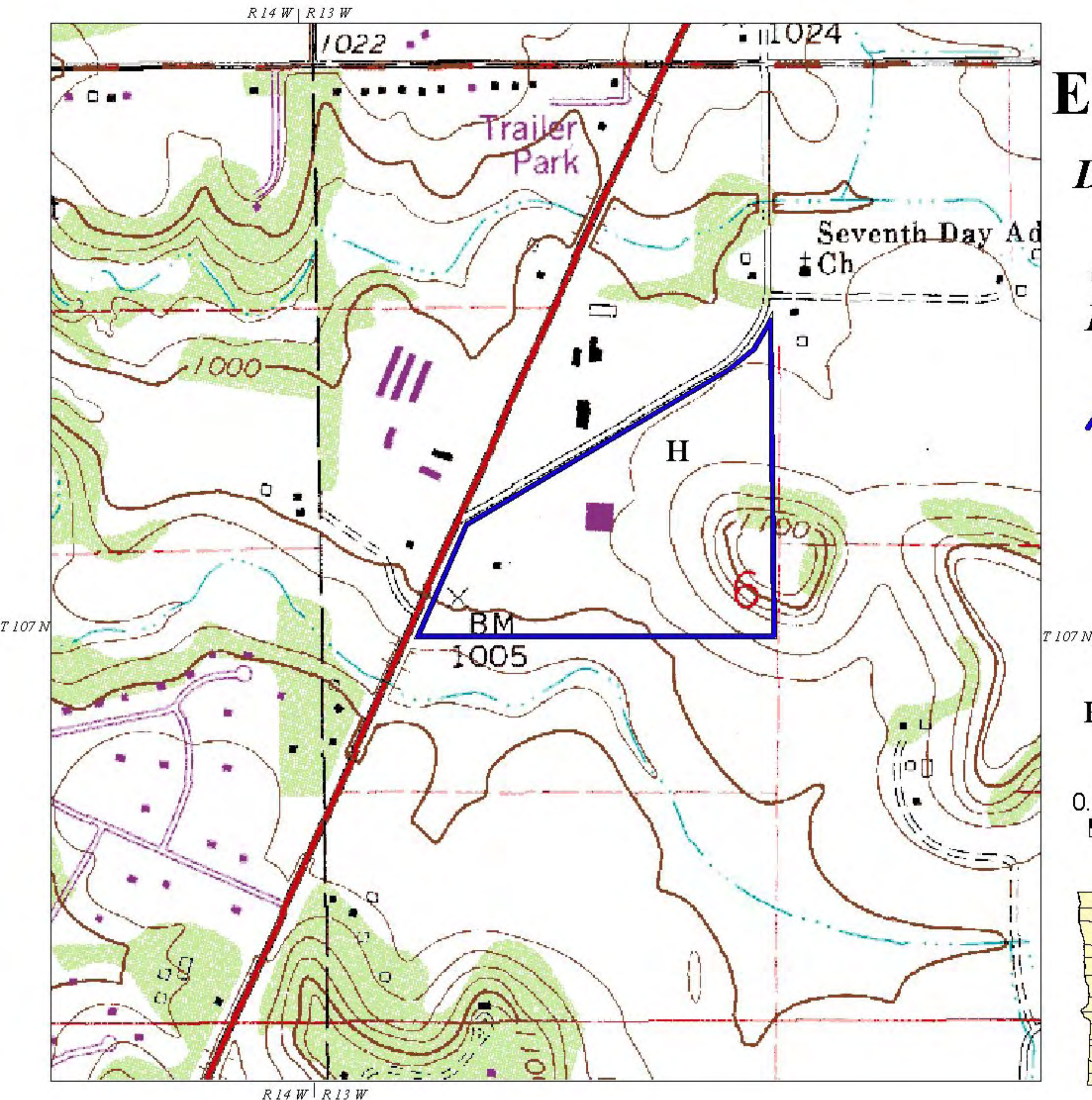
Approved September 1, 2004



Domaille Engineering Inc.

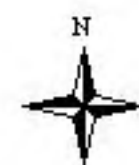
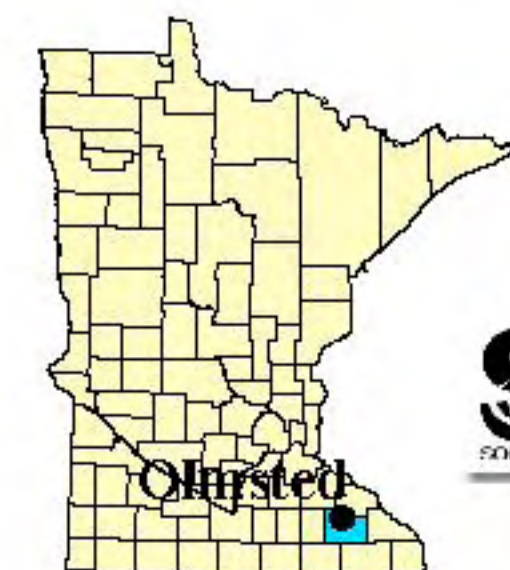
*Drinking Water Supply
Management Area
(DWSMA) MN-00297
10 year Time of Travel*

 DWSMA Boundary



H = High Vulnerability

0.1 0 0.1 Miles



Approved August 25, 2004