



Project Information Workshop

T.H. 52/Oronoco Design-Build

S.P. 5508-84

**Minnesota Department of
Transportation**

Olmsted County, City of Oronoco



Introductions

- **Jai Kalsy, Mn/DOT Dist. 6 - Rochester**
 - **Project Manager**
- **Jeff Vlaminck, Mn/DOT Asst. District Engineer**
 - **Design-Build and Program Support**
- **Terry Ward, Mn/DOT Dist. 6 – Rochester**
- **Joe Gladke, Mn/DOT Office of Construction and Innovative Contracting**
- **Steve Howe, HNTB Corporation**
 - **General Engineering Consultant**

Project Partners

- **Olmsted County**
- **City of Oronoco**
- **FHWA**

Project Information Workshop Presentation

1. Purpose
2. Project Background
3. Project Overview
 - Basic Configuration
 - Schedule
 - Estimated Cost
4. Design-Build Process – Terry Ward, et. al
5. Design-Build Culture – Joe Gladke
6. Comments/Questions

Purpose

- **Overview of:**
 - **Scope/Concept**
 - **Status of Env. Documents/Permits**
 - **Procurement Schedule**
 - **Design-Build Program**
 - **Comments/Questions**

Project Background

- **2000**

- **Road Safety Audit**

- Identified Operational Deficiencies at Oronoco Intersections

- **Highway 52 Corridor Study**

- Establishes Freeway vision b/n I-494 (Metro) to I-90 (D6)

- **2001**

- **Oronoco-Pine Island Sub-Area Study**

- To determine how best to implement freeway vision

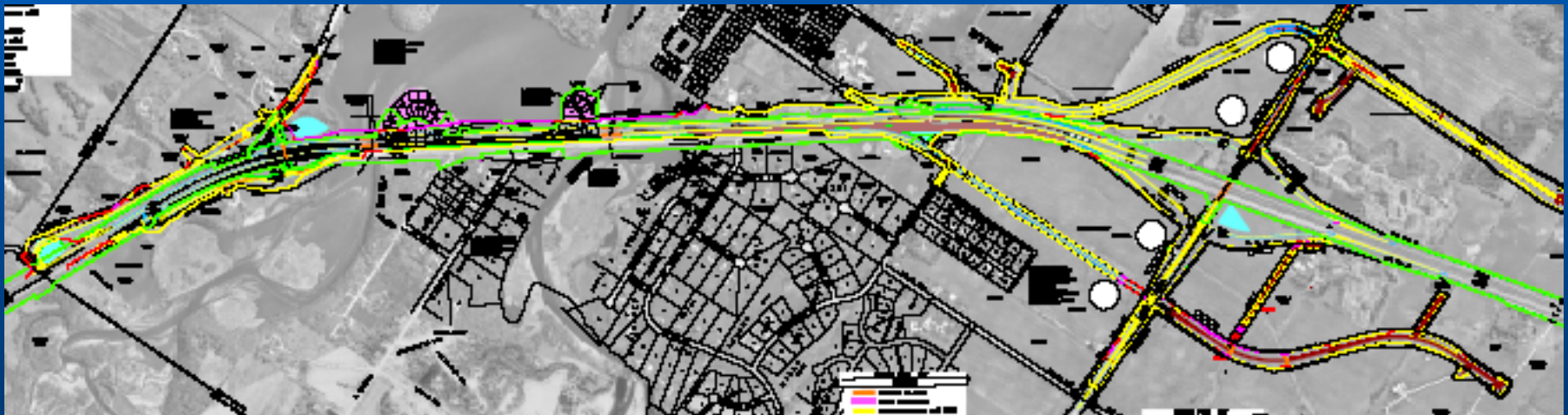
- **Results**

- 3 interchanges to provide access to highway 52
- 1 overpass
- All other direct access to be closed.

Project Background

- **Fall 2003: Pawlenty/Molnau Bond Accelerated Project Bill**
 - **Advances funding for Oronoco piece**
 - **To address known safety problems at CSAH 12 and CSAH 18 intersections (Road Safety Audit).**
 - **Design-Build chosen to accommodate accelerated project schedule.**

Basic Configuration Overview



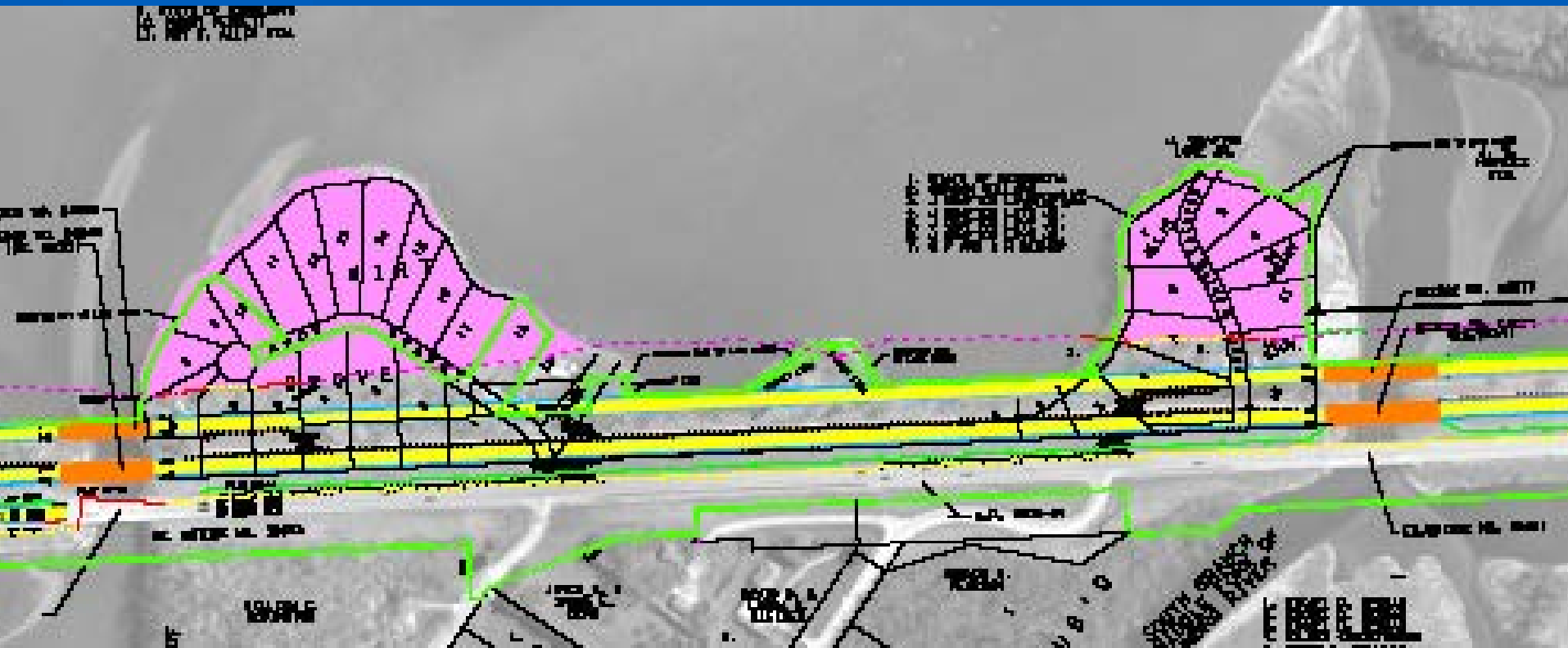
IV. Basic Configuration

- **5 Major elements:**
 - **Overpass @ CSAH 12 (N)**
 - **Including frontage Rd. construction**
 - **Hwy 52 alignment shift**
 - **Creation of new NB lanes and a W.Frontage Rd.**
 - **4 New bridges over Lake Shady**
 - **Interchange at C.R. 112/CR 12 (S)**
 - **Including frontage Rd. construction**
 - **Access Closures b/n 90th St and 59th Ave. NW**

Overpass @ CSAH 12 (N)

- **Close At-Grade intersection w/ hwy 52**
- **Overpass bridge:**
 - Two 12-ft. thru lanes and 10-ft. paved shoulders.
- **Frontage Roads:**
 - **East Frontage Road- start'g 500' E. of Salv. & Marine**
 - **Rt in/out access to NB 52 @ 59th Ave.**
 - **Tie into CSAH 12**
 - **West Frontage Road**
 - **Rt in/out access to SB 52**
 - **2 – 12 ft. paved thru lanes, 8' shoulders**
- **Ponds for runoff detention/treatment**

Highway 52 (Mainline) Alignment



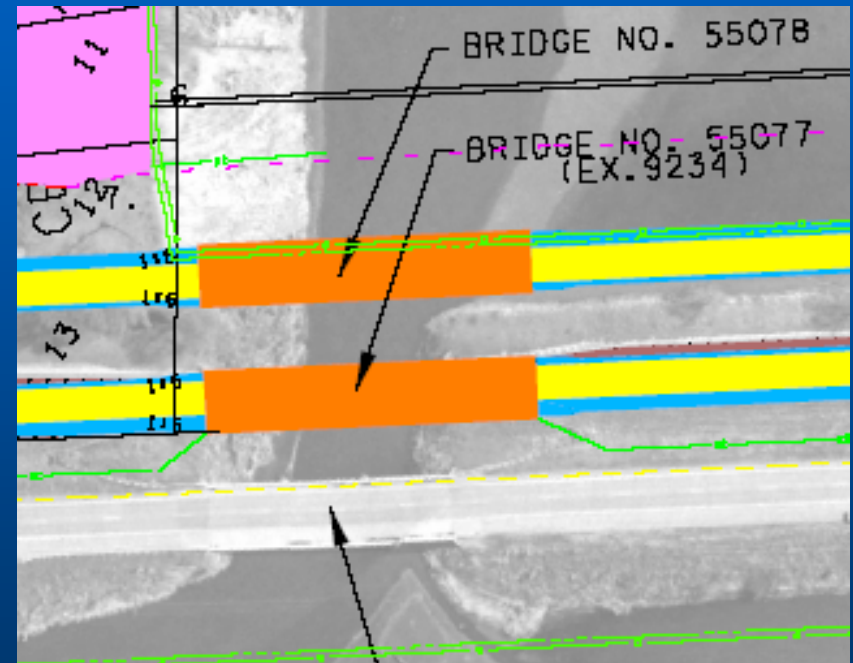
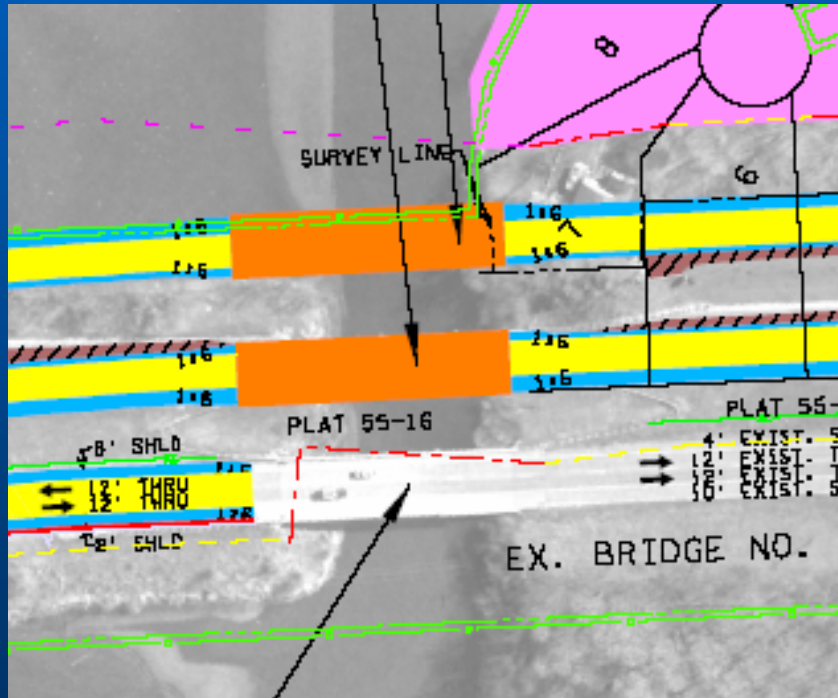
Highway 52 (Mainline) Alignment

- Construct new NB lanes to the east
- Existing NB becomes new SB
- Allows old SB roadway to become new West Frontage Rd.
 - Provides local access to west side properties all the way to 12th St.
- Close access CR 18, Allis Pt., and Wirt Grove Peninsulas
- Pond near exist'g CR18 intersection.

Highway 52 (Mainline) Alignment

- **Typical section for each roadway**
 - **Two thru lanes (13'-14' widened slab concrete)**
 - **3-ft. bit. pvt. shoulder (inside)**
 - **8-ft. bit. Pvt. shoulder (outside)**

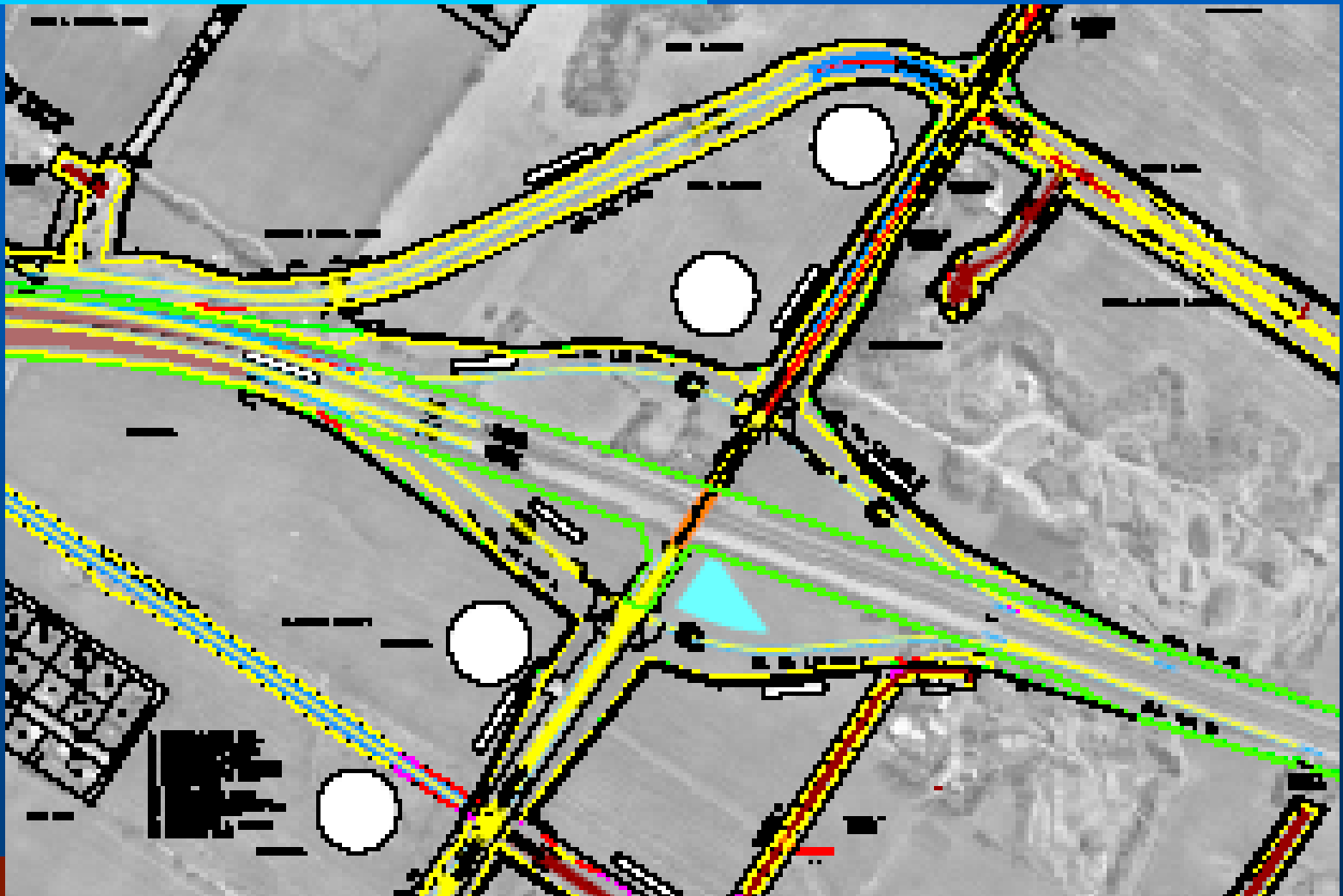
Lake Shady Bridges



Highway 52 Bridges

- 4 new bridges over Lake Shady
 - 2 replacing exist'g NB bridges
 - 2 on new NB alignment
- Typical section:
 - 42-ft. roadway
 - Two, 12-ft. thru lanes
 - 6-ft. inside shoulder
 - 12-ft. outside shoulder

Interchange at CR112/CSAH 12



Interchange

- **Close access at CR112/CR12(S)**
- **Build Grade-separated interchange**
- **Standard Diamond configuration**
- **Interchange bridge**
 - **2-thru lanes and a center lane for left turn movements**
 - **10-ft. paved shoulders**

Interchange: County Roads

- **Const. Begins near 3rd Ave. on CR12**
- **Proceeds East, past 40th Ave. intersection.**
 - **Will connect to CR112 upgrade.**
- **C.R. 112/CR 12 (S)**
 - **Two 12-ft. paved thru lanes**
 - **8-ft. paved shoulders**
 - **Various Rt. & Lt. Turn lanes @ ramp and frontage rd. intersections**
 - **Pond located in SW quad. Of interchange.**

Interchange: Frontage Roads

- **Frontage Roads**
 - **East Side**
 - **EFR/40th Ave. NW**
 - **Starts @ Minnesota Ave. to C.R. 112**
 - **Access provided at 2nd Ave. and Drive C.**
 - **Stop controlled int. w/ CR 112**
 - **From CR 112 South – provides access only**
 - **West Side**
 - **WFRD starts at CR 12 (S)**
 - **Proceed South to provide access only.**
 - **Not paved – aggregate surface.**

Project Status Summary

- **Where we're at today:**
 - **Environmental Documents complete**
 - EA July 2003
 - FONSI March 2004
 - Mn/DOT Negative Decl. April 2004
 - Municipal Consent: January 2005
 - **Subsurface Utility Engineering investigation complete Fall 2004**
 - **RFP under development**
 - **Utility Coordination on-going**

Project Status Summary

- **Right-of-Way Acquisition – 60 parcels total**
 - **Anticipate Title and Possession by November 2005.**
- **Permits Required**
 - **Section 404 (Wetlands)**
 - Mn/DOT to submit late Feb.
 - Mitigation to be provided on-site.
 - **DNR Public Waters**
 - Same as above
 - **NPDES (Phase II)**
 - Design-Build contractor will complete

Other Relevant Information

- **Olmsted County upgrade of CR112**
 - From interchange touchdown east
 - Closed to traffic
 - Design-Build Contractor will be required to coordinate

- **Oronoco Gold Rush Days**
 - 3rd weekend in August
 - Expect work restrictions and/or special Maintenance of Traffic Requirements

Procurement Schedule (Subject to Change)

- **March 4, 2005**
 - Letters of Interest Due
- **March 18, 2005**
 - Issue Request for Qualifications
- **April 15, 2005**
 - RFQ Question Submittal Deadline
- **April 29, 2005**
 - SOQs Due

Procurement Schedule

- **May 24-27, 2005**
 - Shortlist Qualified Teams (3 to 5)
 - Issue Request for Proposals

- **Sept. 6, 2005**
 - Proposals Due

- **Late Oct. –Early Nov. 2005**
 - Best Value Determination/Letting

Project Schedule

- **Early 2006**
 - Begin construction
- **Complete Dec. 2007**

Estimated Cost

- **Total Project Cost approx. \$34 million (not including Right-of-Way costs):**
 - 9.5 lane miles of concrete paving
 - 8.5* lane miles of bituminous paving
 - 6 bridges
 - Box culvert work
 - Retaining wall construction
 - Weigh-in-Motion device

(* lane miles of bit. paving revised following presentation. This value does not include bituminous shouldering adjacent to mainline pavement.)

VI. Further Information

On the web:

www.dot.state.mn.us/designbuild

Single Point of Contact for Project Info:

Jai Kalsy, P.E.

Design-Build Project Manager

Mn/DOT District 6

2900 48th St. NW

Rochester, MN 55901

Email: jai.kalsy@dot.state.mn.us

Fax: 507/285-7355