

# Highway 23 New London | Access & Safety Assessment

Newsletter #2

## How can you participate in the assessment?

A comprehensive public involvement process is being conducted to gather input, educate, and gain support for strategies to improve the safety of Highway 23.

Thank you to everyone who attended the first public open house on May 4, 2017, and provided valuable feedback either in-person or online.

### OPEN HOUSE #2

**Date:** Tuesday, October 3, 2017

**Time:** 5 p.m. - 7 p.m.

**Location:** Peace Lutheran Church  
100 4th Ave SW  
New London, MN 56273

## Contacts

**Lindsey Bruer (Knutson), AICP**

MnDOT Project Manager

Phone: 320-214-6333

Email: [Lindsey.Bruer@state.mn.us](mailto:Lindsey.Bruer@state.mn.us)

**Leif Garnass, PE, PTOE**

SRF Consulting Group, Inc.

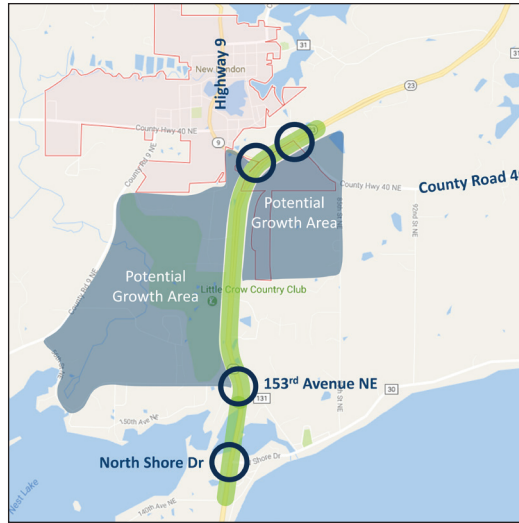
Phone: 763-452-4725

Email: [lgarnass@srfconsulting.com](mailto:lgarnass@srfconsulting.com)

The Minnesota Department of Transportation (MnDOT) and its partners, the City of New London, Kandiyohi County, and the New London Township, are currently conducting an access and safety assessment along Highway 23. Since the first newsletter in April, the assessment team has evaluated existing conditions of the corridor and held the first open house in early May.

## What's next?

- Based on input received during our public and stakeholder outreach, **North Shore Dr has been added and is being evaluated as part of the assessment.**
- Evaluation of traffic crash history and speeds are complete.
- Currently, the assessment team is identifying and evaluating strategies to address issues and concerns along the corridor.
- Join us at the second open house on October 3, 2017 to review and provide education about draft recommendations for improvements to the corridor. Open house details are provided on the left sidebar.



The assessment includes evaluating four intersections along Highway 23: County Road 40, Highway 9, 153rd Avenue NE, and North Shore Dr.

## Schedule

Initial activities for the assessment began in March 2017 and the overall assessment will be completed by November 2017. The assessment is being conducted in three phases:



## Stay updated online!

For more information, please visit the website or project Facebook page:  
<http://www.mndot.gov/d8/projects/hwy23nlsafetyassessment>



<https://www.facebook.com/hwy23newlondonsafetyassessment>

## Highway 23 New London | Access & Safety Assessment



### Travel Speeds

- Travel speeds increase the severity of crashes.
- Drivers are driving too fast, making it difficult to judge traffic.
- With change in speed limit at 153rd Avenue (from 55 mph to 65 mph), it is difficult to judge gaps in traffic from both directions.



### Traffic

- Traffic congestion is an issue at Hwy 9, especially before and after school.
- School traffic is unexpected for non-local drivers since the school is not visible from Hwy 23.
- Recreational traffic causes congestion during the summer months.
- Truck traffic at Hwy 9 creates problems since trucks cannot yield in median.
- Cars weave between Hwy 9 and CR 40.



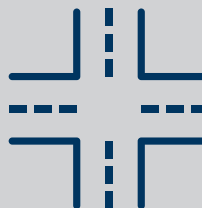
### Driver Behavior

- Inexperienced drivers make poor decisions.
- Most crashes involve younger and older drivers.



### Future Development

- Future development adjacent to Hwy 23 will create additional traffic and require access.
- CR 40 is a future bike route – need to provide safer crossing.
- Future hotel and conference center at golf course will increase traffic.
- Future development will create distractions for drivers.



### Intersection Design

- Roadway curves and grades make visibility of opposing traffic difficult.
- Lack of intersection lighting is a visibility issue at CR 40 and at 153rd Avenue.
- Wide median at Hwy 9 causes confusion for drivers.
- Without the ability to yield in median at 153rd Avenue, wait times to access or cross Hwy 23 are long.
- Median width is inconsistent – Hwy 9 and CR 90 allow for yielding in the median but 153rd Avenue does not.
- Other intersections have similar issues, such as North Shore Drive, 132nd Avenue, and 187th Avenue.



### Suggested Improvements

- Make all medians wider at intersections.
- Lower posted speed limit.
- Reduce roadway curvature and grade changes at intersections.
- Install J-Turns.
- Install traffic signal or roundabout at Hwy 9.
- Realign CR 40 at Hwy 9 and install traffic signal or roundabout.
- Realign CR 40 at Hwy 9 and build an interchange with roundabouts.
- Install intersection lighting at CR 40 and at 153rd Avenue.
- Install acceleration lanes onto Hwy 23.