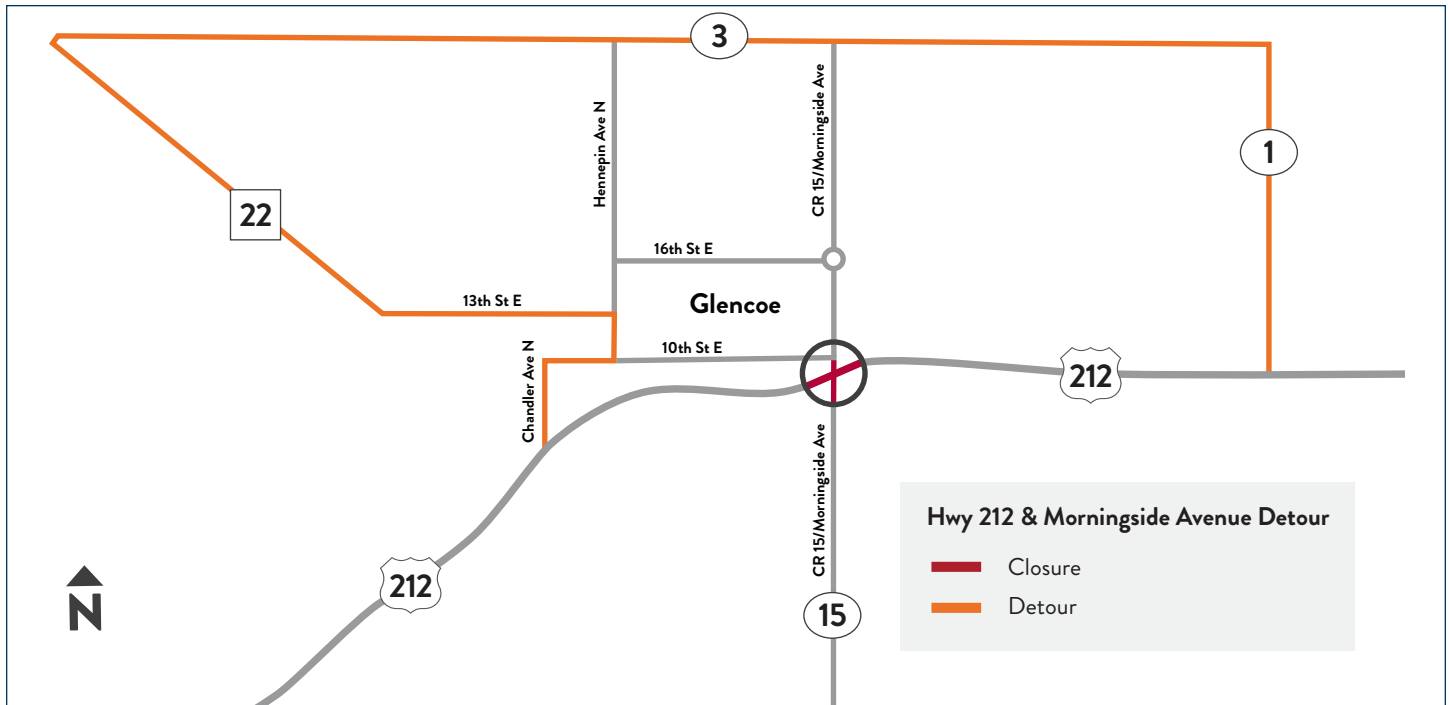


HWY 212 ROUNDABOUT PROJECT

Glencoe, MN

Project Overview

MnDOT, in partnership with McLeod County, is constructing a single lane roundabout at the intersection of Hwy 212 and CR 15/Morningside Ave. in Glencoe. The project also includes adding a multi-use trail on all sides of the roundabout to connect to the existing trails in the area.



Project Benefits

- Slow vehicle speeds and lower the risk of serious and fatal crashes
- Reduce traffic back-ups and improve traffic flow
- Have a mountable curb to accommodate vehicles of all sizes such as emergency vehicles, buses, farm equipment, and semi-trucks with trailers
- Provide safe crossing for people who walk and bike

Traffic Impacts & Detour

- The project will be built in 2024, and work will require a detour.
- Motorists should expect delays

Project Timeline

- In-person & virtual meetings**
 - February 2022
 - Summer 2022
- Construction**
 - Begins in 2024



Stay Connected

Stay connected throughout construction.

Sign up for project email and text updates at:
mndot.gov/d8/projects/hwy212morningside

Contacts

Dave Nilan, *Project Manager*

Mandi Lighthizer-Schmidt, *Dir. of Public Engagement*

📞 612-214-5975

📞 320-212-6132

✉️ david.nilan@state.mn.us

✉️ mandi.lighthizer-schmidt@state.mn.us