

3:09:00 PM






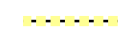









3/11/2012

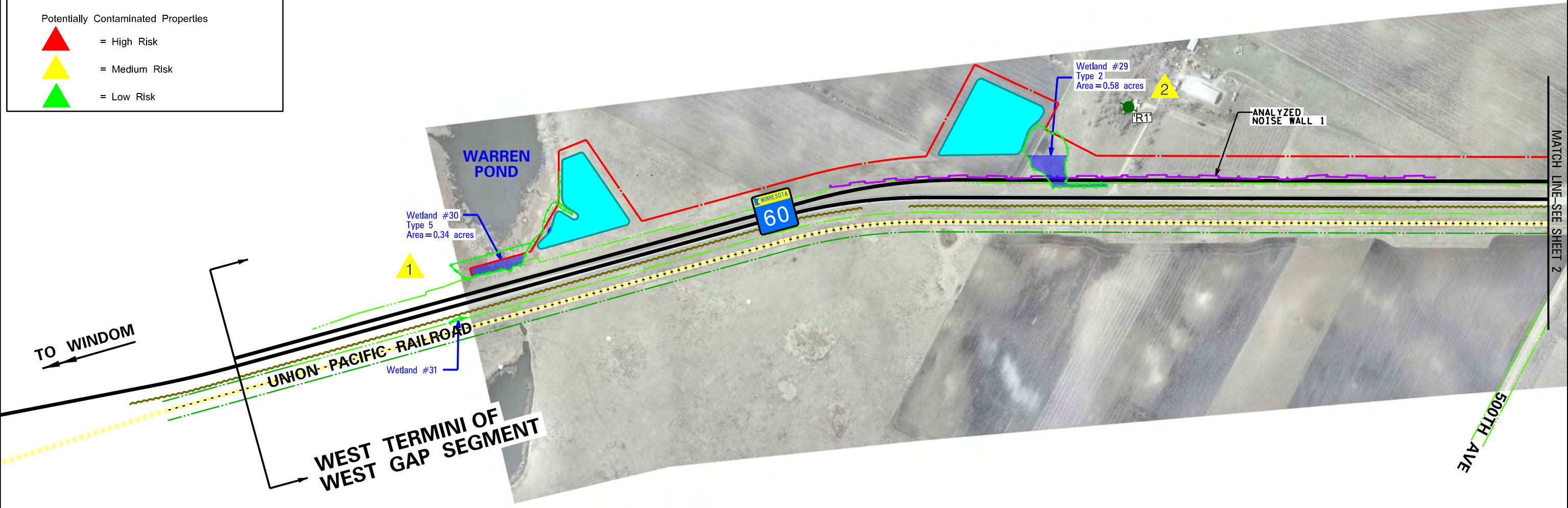
1

Plot By: cflor  
S:\KON\Mnt07\116353\5-dsgn\EIS DGNs & Figures\116353\_EIS pnshts.dgn





### LEGEND

-  Proposed Centerline Alignments
-  Proposed Right of Way
-  Existing Right of Way
-  Existing Railroad Right of Way
-  Historic Railroad
-  Property Relocation
-  Wetland Boundary
-  Wetland Impact
-  Prairie Remnant Location
-  Noise Monitoring & Receptor Sites
-  Analyzed Noise Barrier
-  Access Closure
- Potentially Contaminated Properties**
-  = High Risk
-  = Medium Risk
-  = Low Risk



DATE: 3/12/2012

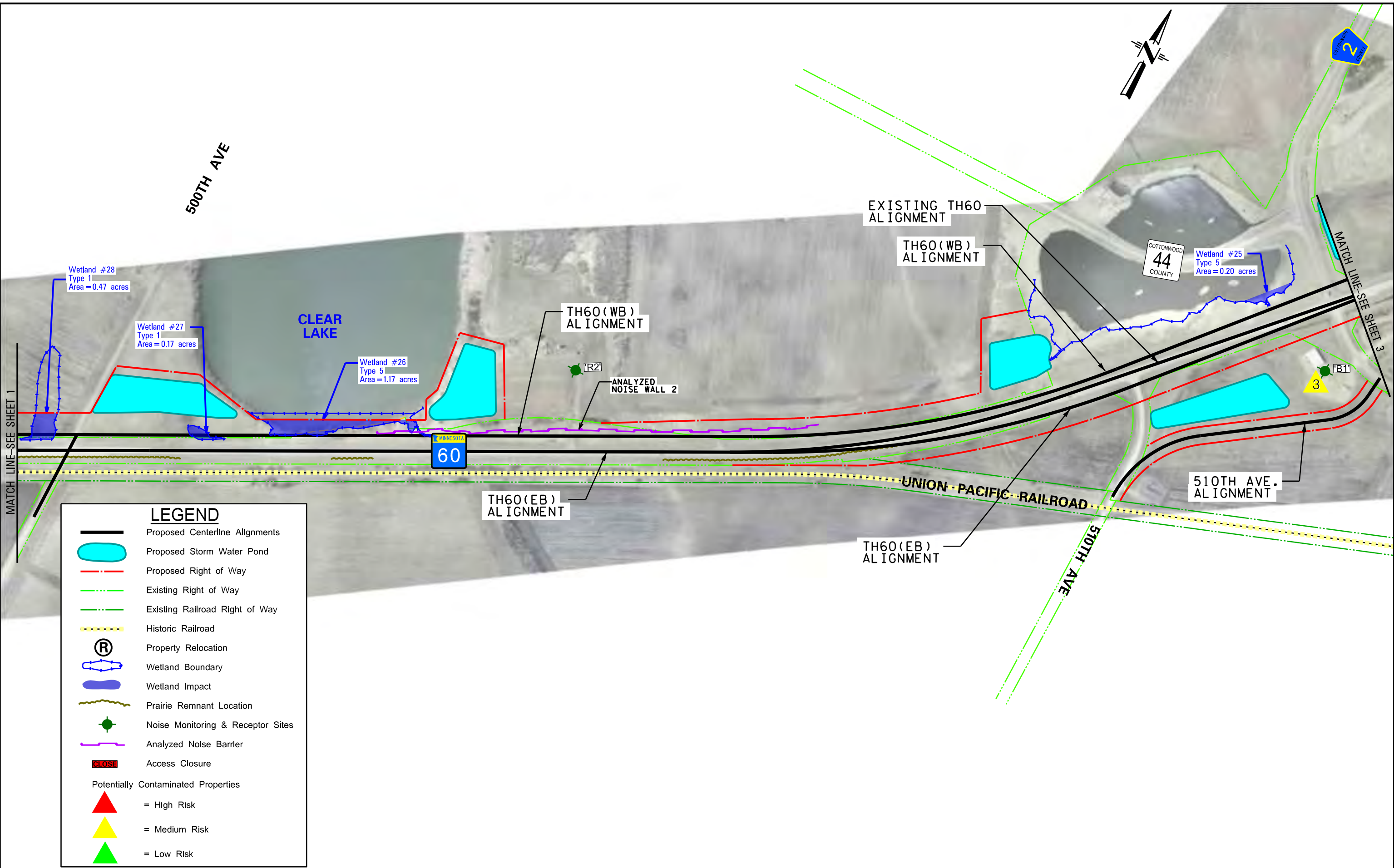



MINNESOTA DEPARTMENT OF TRANSPORTATION  
**T.H. 60**  
 FROM WINDOM TO ST. JAMES

BUILD ALTERNATIVE

**WEST GAP**

FIGURE  
**A1**



**LEGEND**

- Proposed Centerline Alignments
- Proposed Storm Water Pond
- Proposed Right of Way
- Existing Right of Way
- Existing Railroad Right of Way
- Historic Railroad
- Property Relocation (R)
- Wetland Boundary
- Wetland Impact
- Prairie Remnant Location
- Noise Monitoring & Receptor Sites
- Analyzed Noise Barrier
- Access Closure
- Potentially Contaminated Properties
  - High Risk (Red Triangle)
  - Medium Risk (Yellow Triangle)
  - Low Risk (Green Triangle)

DATE: 2/15/2012

MINNESOTA DEPARTMENT OF TRANSPORTATION  
**T.H. 60**  
 FROM WINDOM TO ST. JAMES

BUILD ALTERNATIVE

WEST GAP

FIGURE A2



3:16:00 PM  
 1/19/2012  
 3  
 S:\K0\MM\mt07\116353\5-dsgn\EIS DGNs & Figures\116353\EIS pnshts.dgn  
 PLOT BY: nblanchard

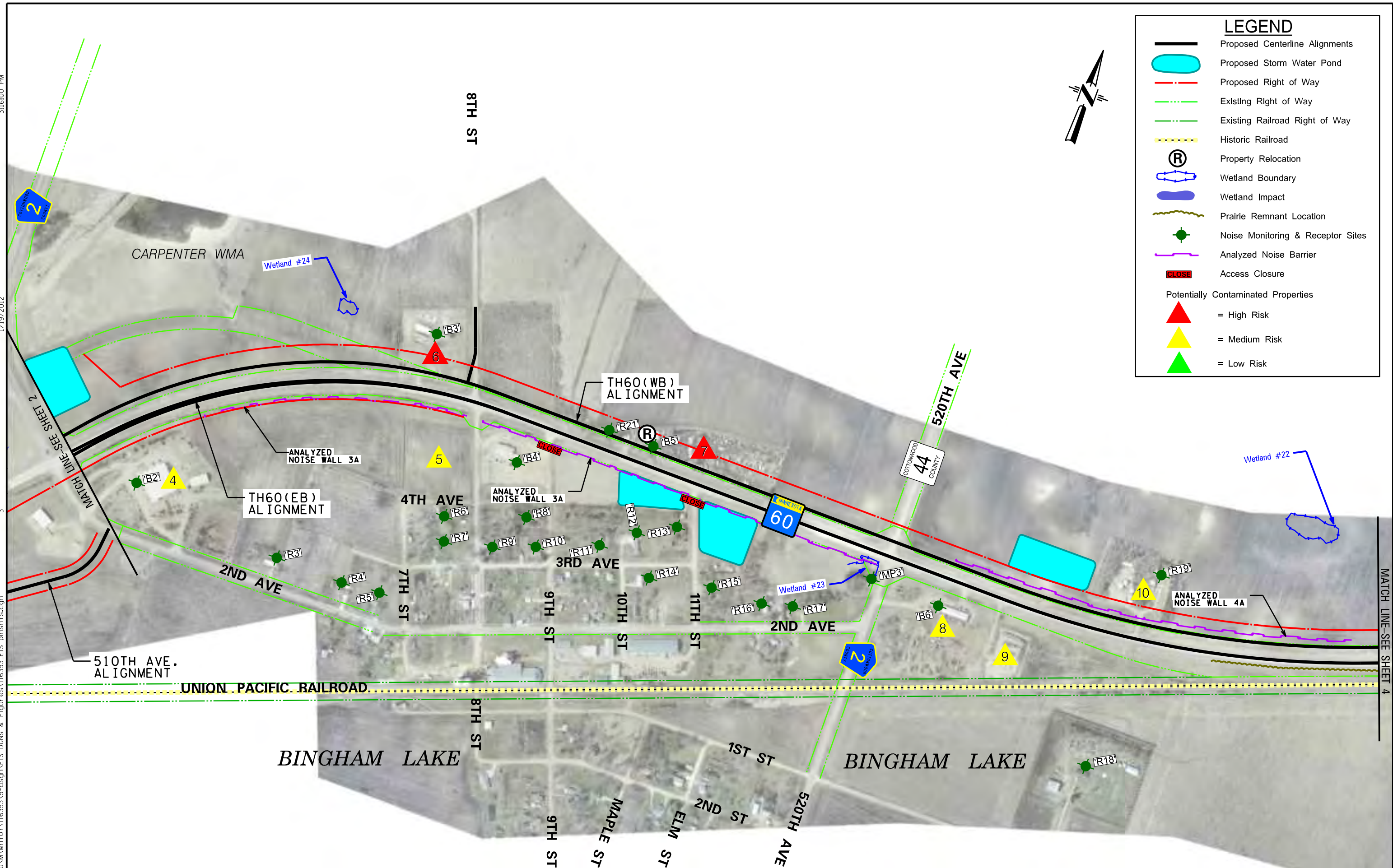


### LEGEND

- Proposed Centerline Alignments
- Proposed Storm Water Pond
- Proposed Right of Way
- Existing Right of Way
- Existing Railroad Right of Way
- Historic Railroad
- Property Relocation
- Wetland Boundary
- Wetland Impact
- Prairie Remnant Location
- Noise Monitoring & Receptor Sites
- Analyzed Noise Barrier
- Access Closure

Potentially Contaminated Properties

- = High Risk
- = Medium Risk
- = Low Risk



DATE: 1/19/2012

MINNESOTA DEPARTMENT OF TRANSPORTATION  
**T.H. 60**  
 FROM WINDOM TO ST. JAMES

**BUILD ALTERNATIVE**

**WEST GAP**

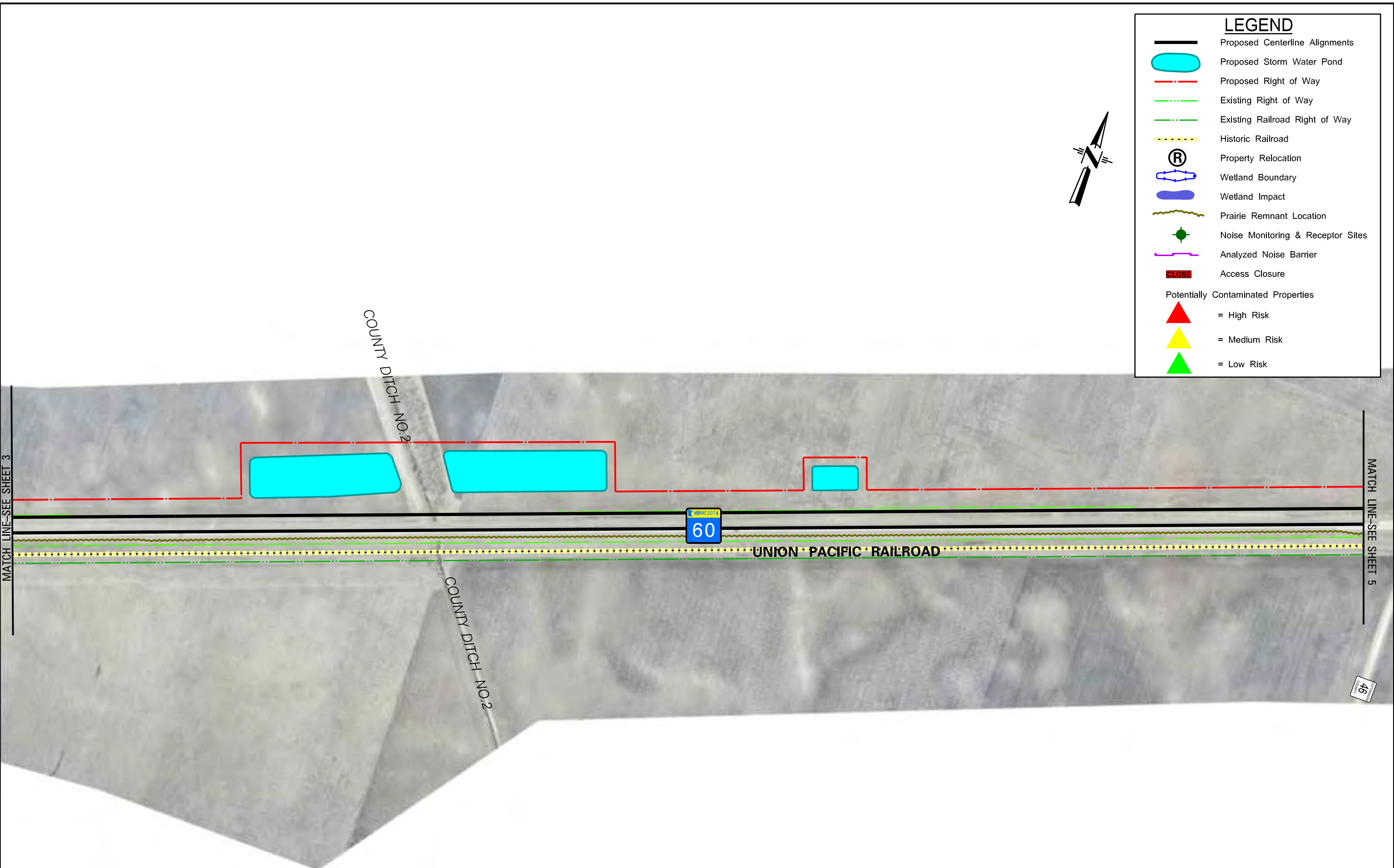
FIGURE **A3**

3:16:26 PM

1/19/2012

4

Plot by: nblanchard  
S:\KON\Mnt07\116353\5-dsgn\EIS DGNs & Figurees\116353\EIS pnsnts.dgn



LEGEND	
	Proposed Centerline Alignments
	Proposed Storm Water Pond
	Proposed Right of Way
	Existing Right of Way
	Existing Railroad Right of Way
	Historic Railroad
	Property Relocation
	Wetland Boundary
	Wetland Impact
	Prairie Remnant Location
	Noise Monitoring & Receptor Sites
	Analyzed Noise Barrier
	Access Closure
Potentially Contaminated Properties	
	= High Risk
	= Medium Risk
	= Low Risk

DATE: 1/19/2012

MINNESOTA DEPARTMENT OF TRANSPORTATION  
**T.H. 60**  
 FROM WINDOM TO ST. JAMES

BUILD ALTERNATIVE

**WEST\_GAP**

FIGURE **A4**








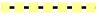










3:16:50 PM

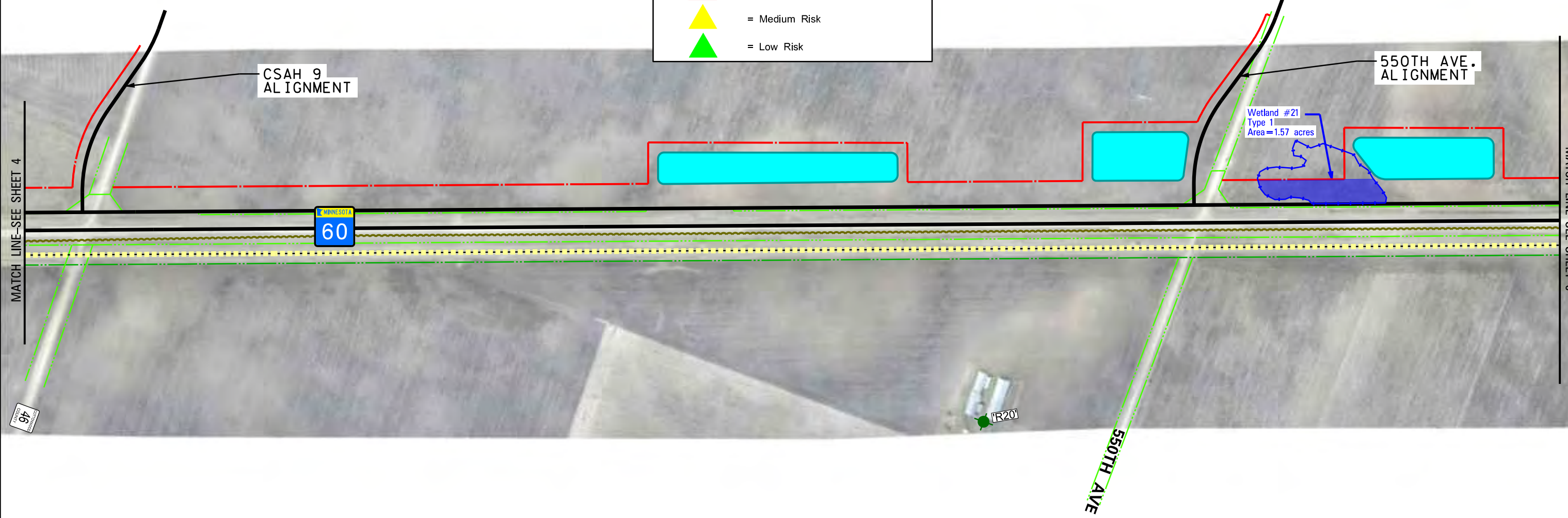
1/19/2012

5

Plot\_Bf: nblanchard S:\K0\MM\mt07\116353\5-dsgn\EIS DGNs & Figures\116353\EIS pnshts.dgn

### LEGEND



-  Proposed Centerline Alignments
-  Proposed Storm Water Pond
-  Proposed Right of Way
-  Existing Right of Way
-  Existing Railroad Right of Way
-  Historic Railroad
-  Property Relocation
-  Wetland Boundary
-  Wetland Impact
-  Prairie Remnant Location
-  Noise Monitoring & Receptor Sites
-  Analyzed Noise Barrier
-  Access Closure
- Potentially Contaminated Properties**
-  = High Risk
-  = Medium Risk
-  = Low Risk



MATCH LINE-SEE SHEET 4

MATCH LINE-SEE SHEET 6

DATE: 1/19/2012

MINNESOTA DEPARTMENT OF TRANSPORTATION  
**T.H. 60**  
 FROM WINDOM TO ST. JAMES

BUILD ALTERNATIVE

**WEST GAP**

FIGURE  
**A5**

















1:59:44 PM

9/8/2011

6

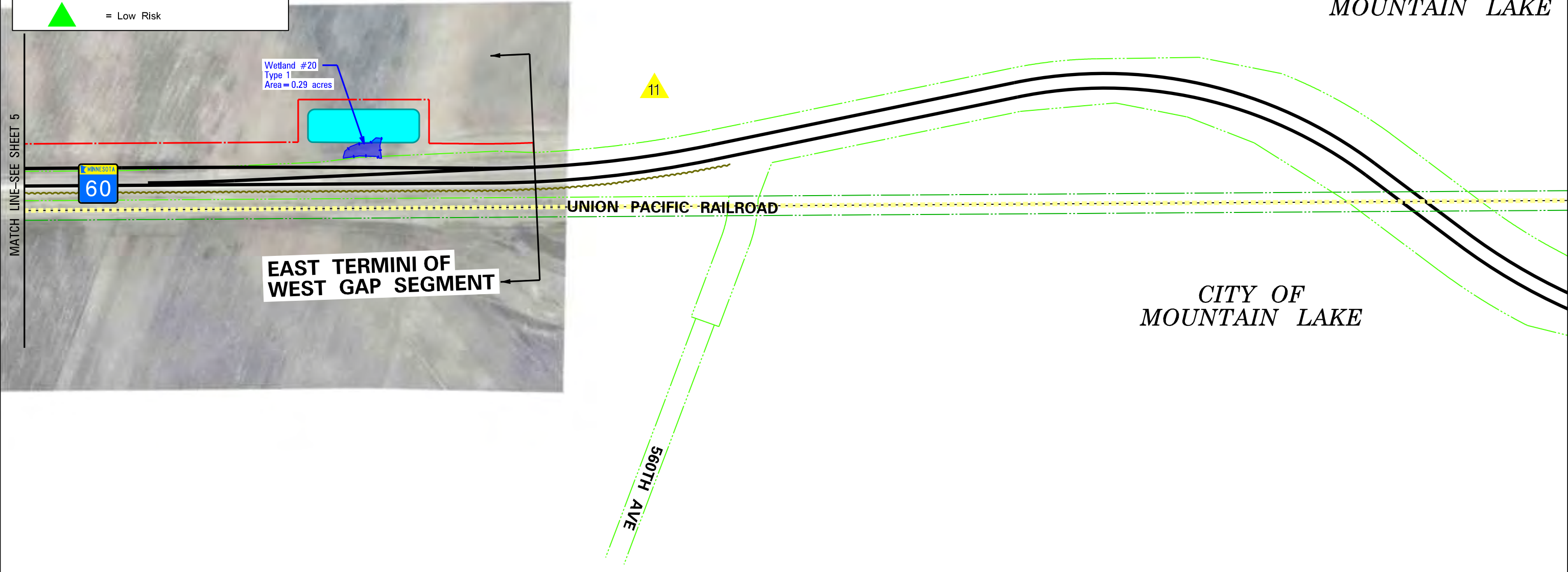
PLOT BY: mtran  
S:\KON\Mnt07\116353\5-dsgn\EIS DGNS & Figures\116353\_EIS pnsnts.dgn

### LEGEND

-  Proposed Centerline Alignments
-  Proposed Storm Water Pond
-  Proposed Right of Way
-  Existing Right of Way
-  Existing Railroad Right of Way
-  Historic Railroad
-  Property Relocation
-  Wetland Boundary
-  Wetland Impact
-  Prairie Remnant Location
-  Noise Monitoring & Receptor Sites
-  Analyzed Noise Barrier
-  Access Closure
- Potentially Contaminated Properties**
-  = High Risk
-  = Medium Risk
-  = Low Risk



*CITY OF MOUNTAIN LAKE*



Wetland #20  
Type 1  
Area = 0.29 acres

11

MINNESOTA  
60

UNION PACIFIC RAILROAD

**EAST TERMINI OF WEST GAP SEGMENT**

560TH AVE

*CITY OF MOUNTAIN LAKE*

DATE:  
9/8/2011



MINNESOTA DEPARTMENT OF TRANSPORTATION  
**T.H. 60**  
FROM WINDOM TO ST. JAMES

BUILD ALTERNATIVE

**WEST GAP**

FIGURE  
**A6**