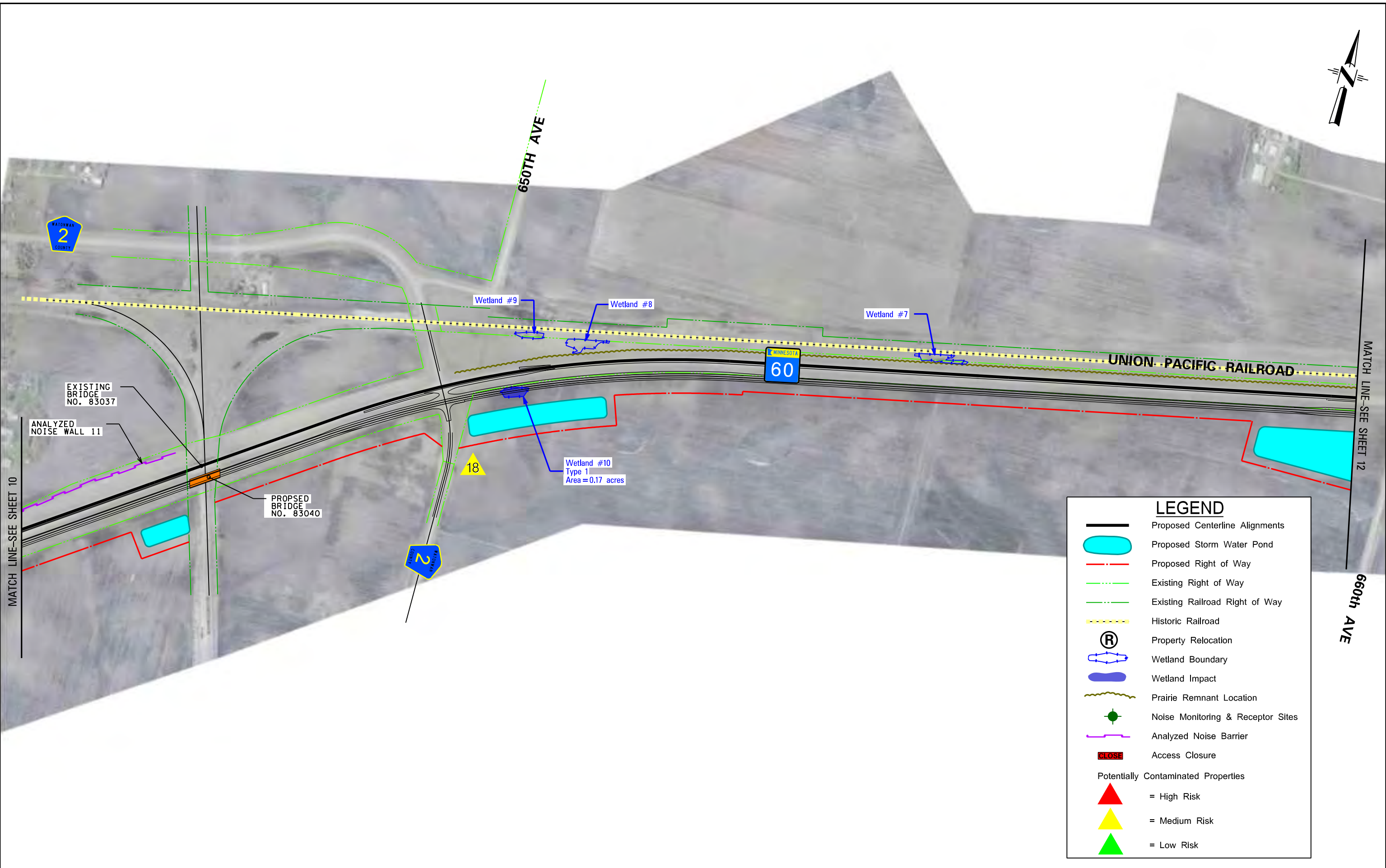


2:00:17 PM

9/8/2011

11

Plot By: mtrian  
S:\KON\Mnt07\116353\5-dsgn\EIS DGNs & Figures\116353\_EIS pnshts.dgn



LEGEND	
	Proposed Centerline Alignments
	Proposed Storm Water Pond
	Proposed Right of Way
	Existing Right of Way
	Existing Railroad Right of Way
	Historic Railroad
	Property Relocation
	Wetland Boundary
	Wetland Impact
	Prairie Remnant Location
	Noise Monitoring & Receptor Sites
	Analyzed Noise Barrier
	Access Closure
Potentially Contaminated Properties	
	= High Risk
	= Medium Risk
	= Low Risk

DATE: 9/8/2011



MINNESOTA DEPARTMENT OF TRANSPORTATION  
**T.H. 60**  
FROM WINDOM TO ST. JAMES

**BUILD ALTERNATIVE**

**EAST GAP**

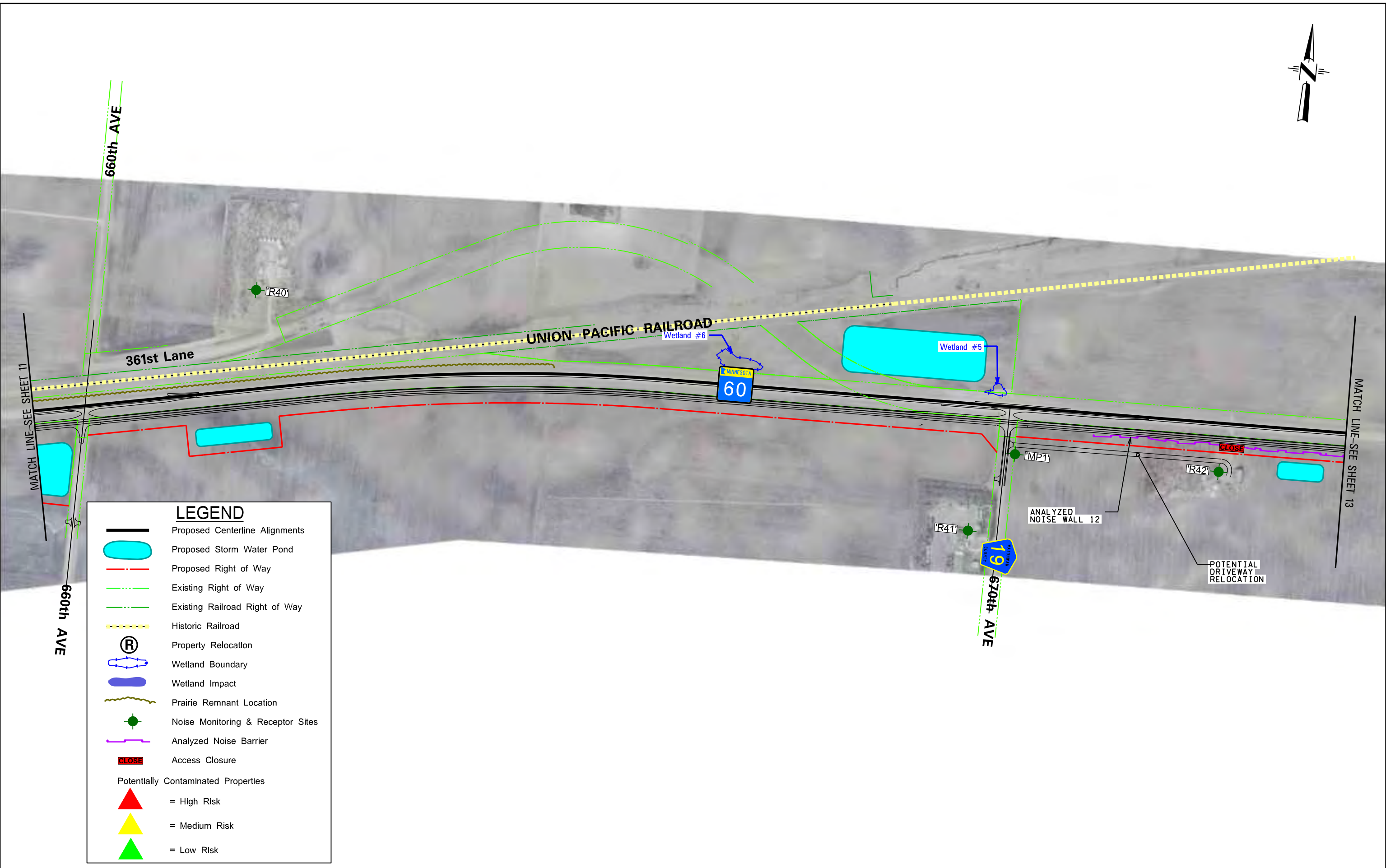
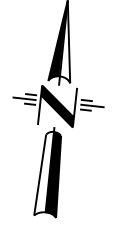
FIGURE **A11**

2:00:22 PM

9/8/2011

12

Plot By: mtran  
S:\KON\Mnt07\116353\5-dsgn\EIS DGNS & Figures\116353\_EIS\_pnshts.dgn



**LEGEND**

- Proposed Centerline Alignments
- Proposed Storm Water Pond
- Proposed Right of Way
- Existing Right of Way
- Existing Railroad Right of Way
- Historic Railroad
- Property Relocation
- Wetland Boundary
- Wetland Impact
- Prairie Remnant Location
- Noise Monitoring & Receptor Sites
- Analyzed Noise Barrier
- Access Closure

Potentially Contaminated Properties

- = High Risk
- = Medium Risk
- = Low Risk

DATE: 9/8/2011

MINNESOTA DEPARTMENT OF TRANSPORTATION  
**T.H. 60**  
 FROM WINDOM TO ST. JAMES

**BUILD ALTERNATIVE**

**EAST GAP**

FIGURE  
**A12**

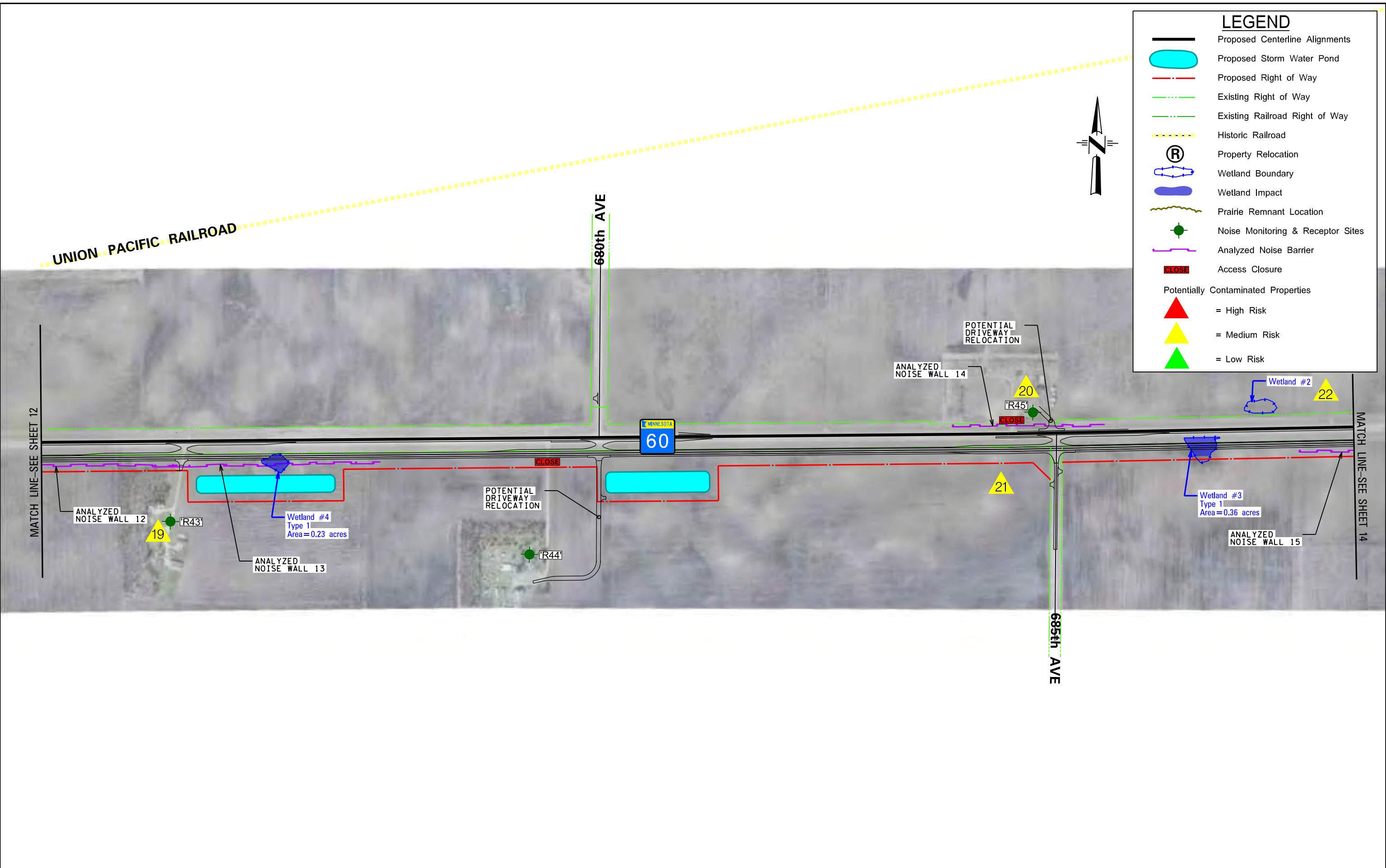


2:00:27 PM

9/8/2011

13

Plot By: miron  
S:\KON\Mnt07\116353\5-dsgn\EIS DGNS & Figures\116353\_EIS\_pnsnts.dgn

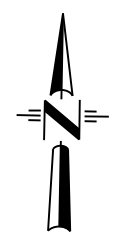


### LEGEND

- Proposed Centerline Alignments
- Proposed Right of Way
- Existing Right of Way
- Existing Railroad Right of Way
- Historic Railroad
- Property Relocation
- Wetland Boundary
- Wetland Impact
- Prairie Remnant Location
- Noise Monitoring & Receptor Sites
- Analyzed Noise Barrier
- Access Closure

Potentially Contaminated Properties

- = High Risk
- = Medium Risk
- = Low Risk



DATE: 9/8/2011

MINNESOTA DEPARTMENT OF TRANSPORTATION  
**T.H. 60**  
 FROM WINDOM TO ST. JAMES

BUILD ALTERNATIVE

**EAST GAP**

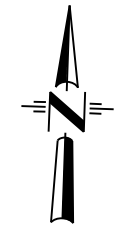
FIGURE **A13**

2:00:32 PM

9/8/2011

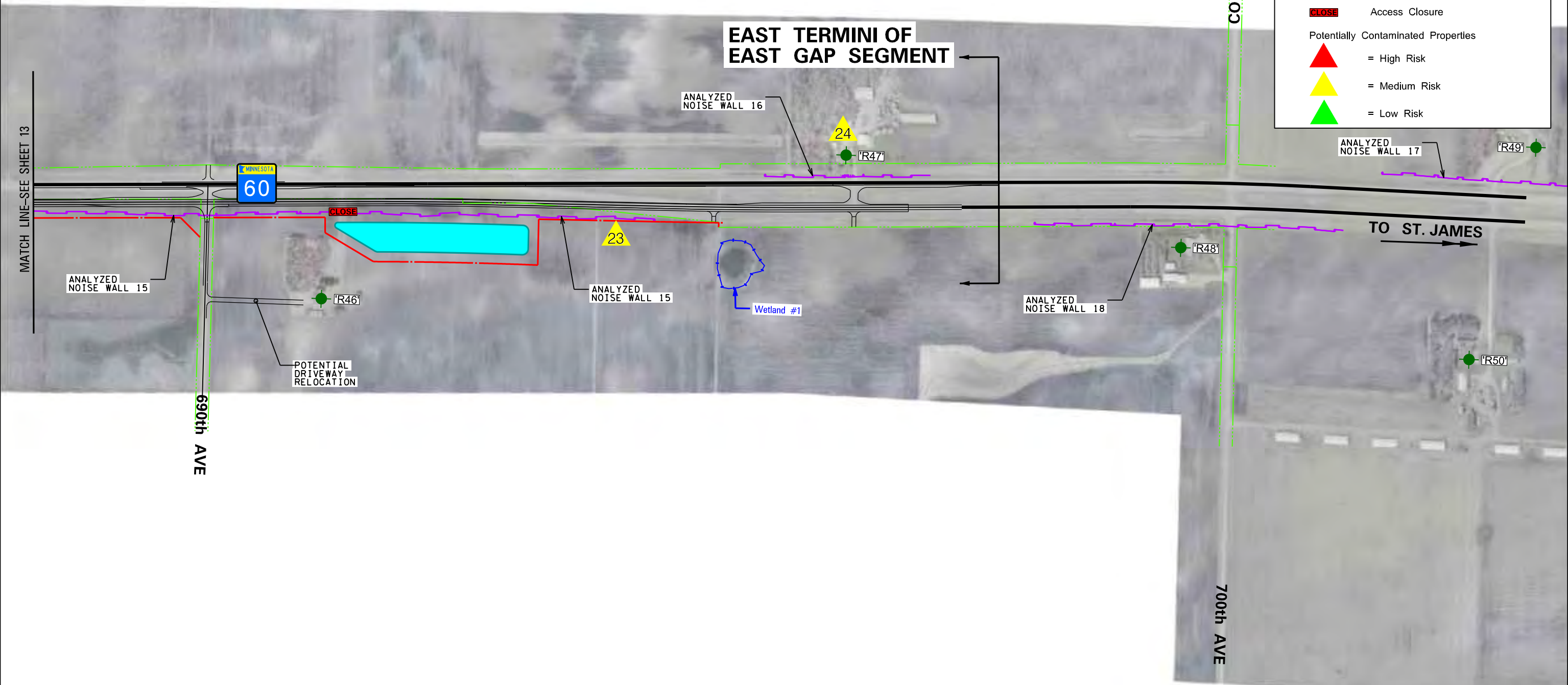
14

Plot by: mtran  
S:\KON\Mnt07\116353\5-dsgn\EIS DGNs & Figures\116353\_EIS\_pnshts.dgn



LEGEND	
	Proposed Centerline Alignments
	Proposed Storm Water Pond
	Proposed Right of Way
	Existing Right of Way
	Existing Railroad Right of Way
	Historic Railroad
	Property Relocation
	Wetland Boundary
	Wetland Impact
	Prairie Remnant Location
	Noise Monitoring & Receptor Sites
	Analyzed Noise Barrier
	Access Closure
Potentially Contaminated Properties	
	= High Risk
	= Medium Risk
	= Low Risk

### EAST TERMINI OF EAST GAP SEGMENT



DATE: 9/8/2011

MINNESOTA DEPARTMENT OF TRANSPORTATION  
**T.H. 60**  
 FROM WINDOM TO ST. JAMES

BUILD ALTERNATIVE

**EAST GAP**

FIGURE **A14**