

Hwy 22/Hwy 109 Wells Issues and Opportunities Engagement Summary

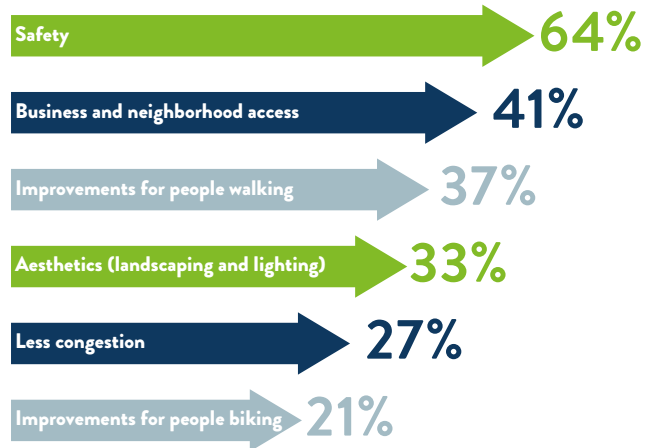
Public feedback collected Nov. 30, 2020 – Jan. 8, 2021

MnDOT will be reconstructing Hwy 22 (2nd Ave SW/2nd Ave. NW) in Wells between the northern Hwy 109 intersection to just south of 12th St SW, and Hwy 109 (1st St. NW) from west of Rose Hill Cemetery to Hwy 22. The reconstruction project will:

- Increase safety for people walking and biking
- Improve the road and utilities

MnDOT collected feedback to help identify issues and opportunities for improvements on Hwy 22 and Hwy 109 through an online survey and interactive comment map.

161 people provided feedback
Participants top priorities for corridor improvements:



How do you travel on Hwy 22?

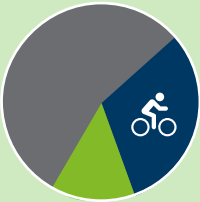
62% walk on Hwy 22

37% who do not walk said they would if there were pedestrian improvements

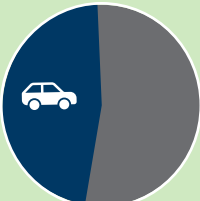


36% bike on Hwy 22

30% who do not bike said they would if there were bicyclist improvements



47% use on-street parking on Hwy 22



How do you travel on Hwy 109?

39% walk on Hwy 109

21% who do not walk said they would if there were pedestrian improvements

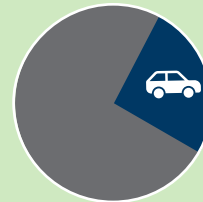


30% bike on Hwy 109

22% who do not bike said they would if there were bicyclist improvements



27% use on-street parking on Hwy 109



Corridor issues and opportunities

Railroad crossing

The sidewalk does not continue over the railroad tracks, so people walking must share travel lanes with cars to cross

South Hwy 22/Hwy 109 intersection

- The narrow intersection requires tight turning movements
- Drivers on south Hwy 22 speed through the intersection
- Drivers do not stop for people walking or biking at this intersection

3rd St. crosswalk

Frequent pedestrian crossings at crosswalk

7th St. crosswalk

People walking and biking feel safe crossing Hwy 22

Visibility at Hwy 22 intersections

Trees growing in the boulevard are causing visibility issues for drivers at driveways and intersections, including:

- South Hwy 109
- Co. Rd. 61 / Franklin St.
- 1st St. SW
- 10th St. SE

Hwy 22/11th St. intersection

- No safe place for pedestrians and bicyclists to cross Hwy 22 near the high school
- Heavy traffic at this intersection before and after school



Overall corridor themes

- Road and sidewalk pavement is in poor condition
- Nighttime visibility is an issue
- Drivers speeding through town is a concern