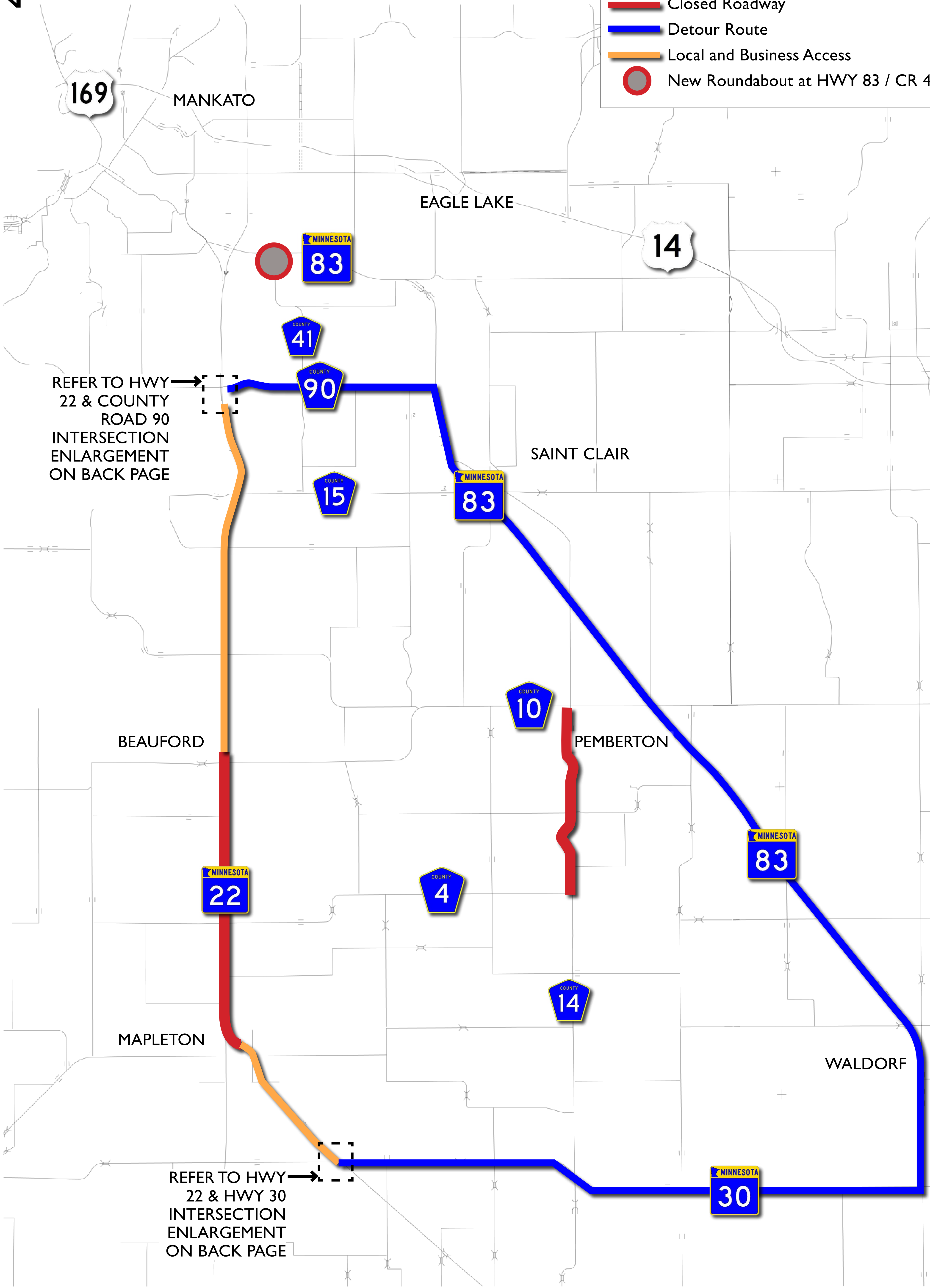


# HWY 22 Construction 2017



**LEGEND**

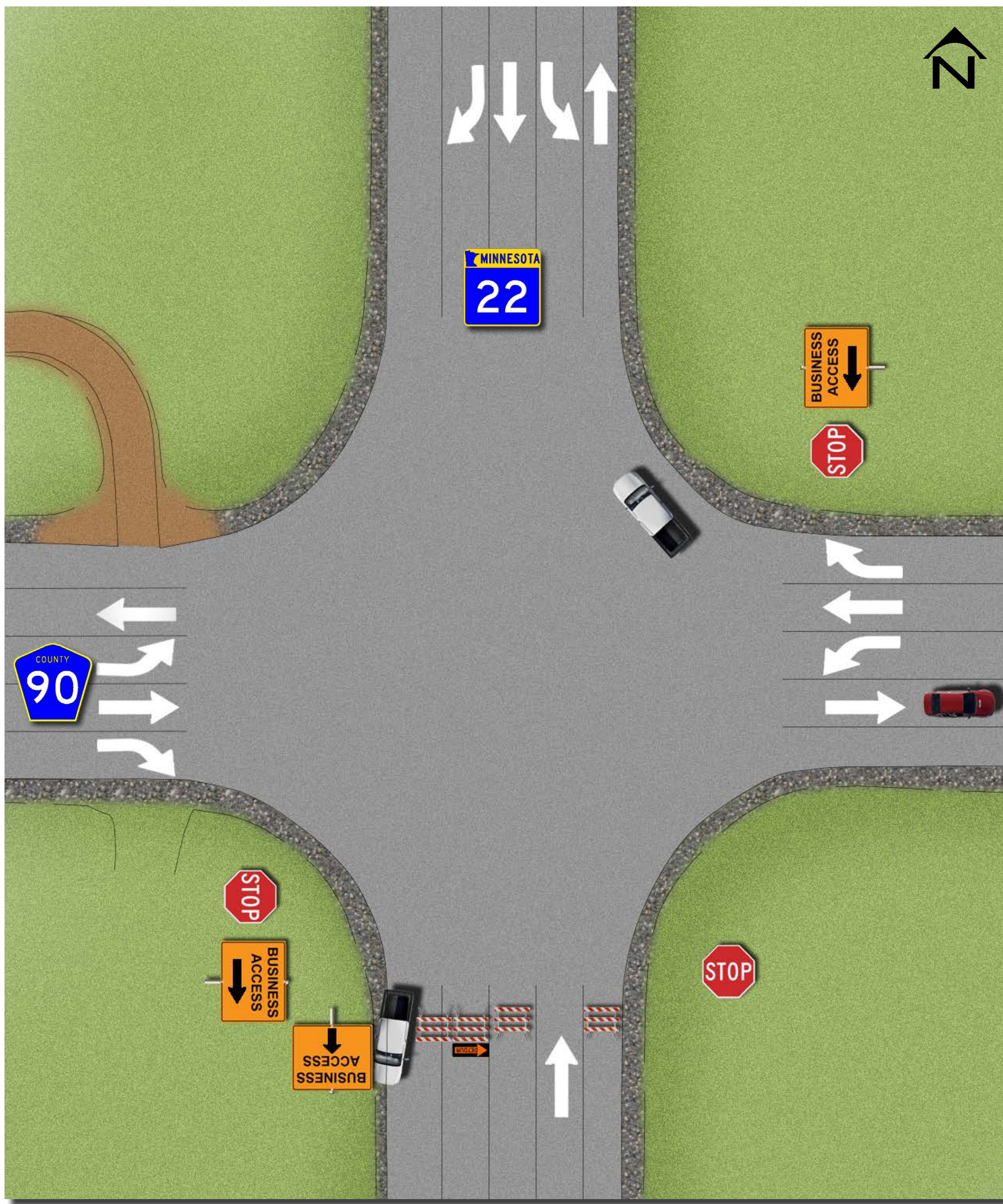
- Closed Roadway
- Detour Route
- Local and Business Access
- New Roundabout at HWY 83 / CR 41



REFER TO HWY 22 & COUNTY ROAD 90 INTERSECTION ENLARGEMENT ON BACK PAGE

REFER TO HWY 22 & HWY 30 INTERSECTION ENLARGEMENT ON BACK PAGE

HWY 22 &  
COUNTY ROAD 90  
INTERSECTION



HWY 22 & HWY 30 INTERSECTION

