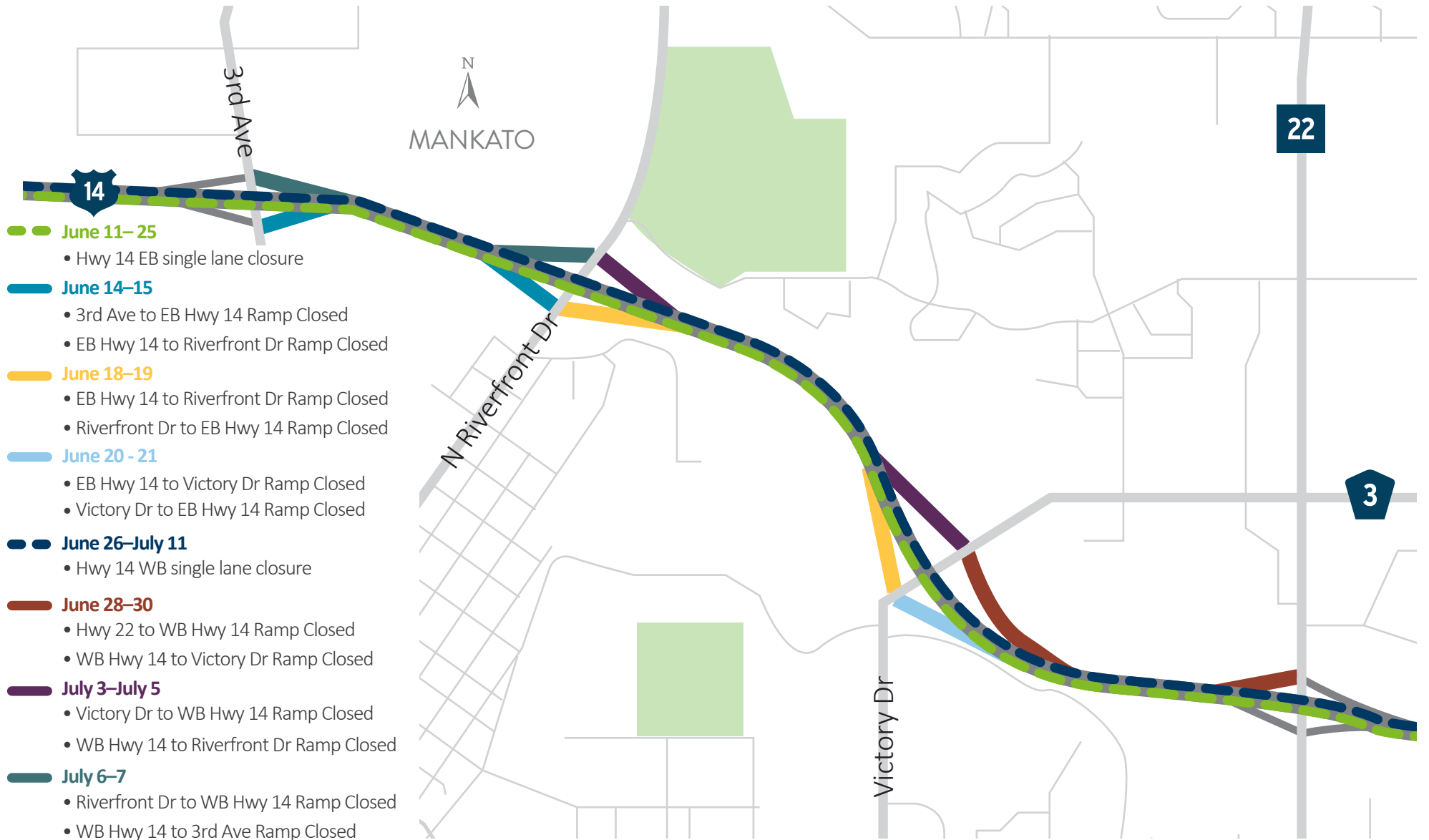


Hwy 14 Anticipated Construction Schedule



Not Shown: Traffic impacts in mid-July for Lookout Dr. to Lor Ray Dr. (North Mankato), including Lookout Dr. ramp closures

**Schedule subject to change due to weather and/or unforeseen circumstances(mapersion 6-19-18)*



website:
www.mndot.gov/d7/projects/hwy14mankato