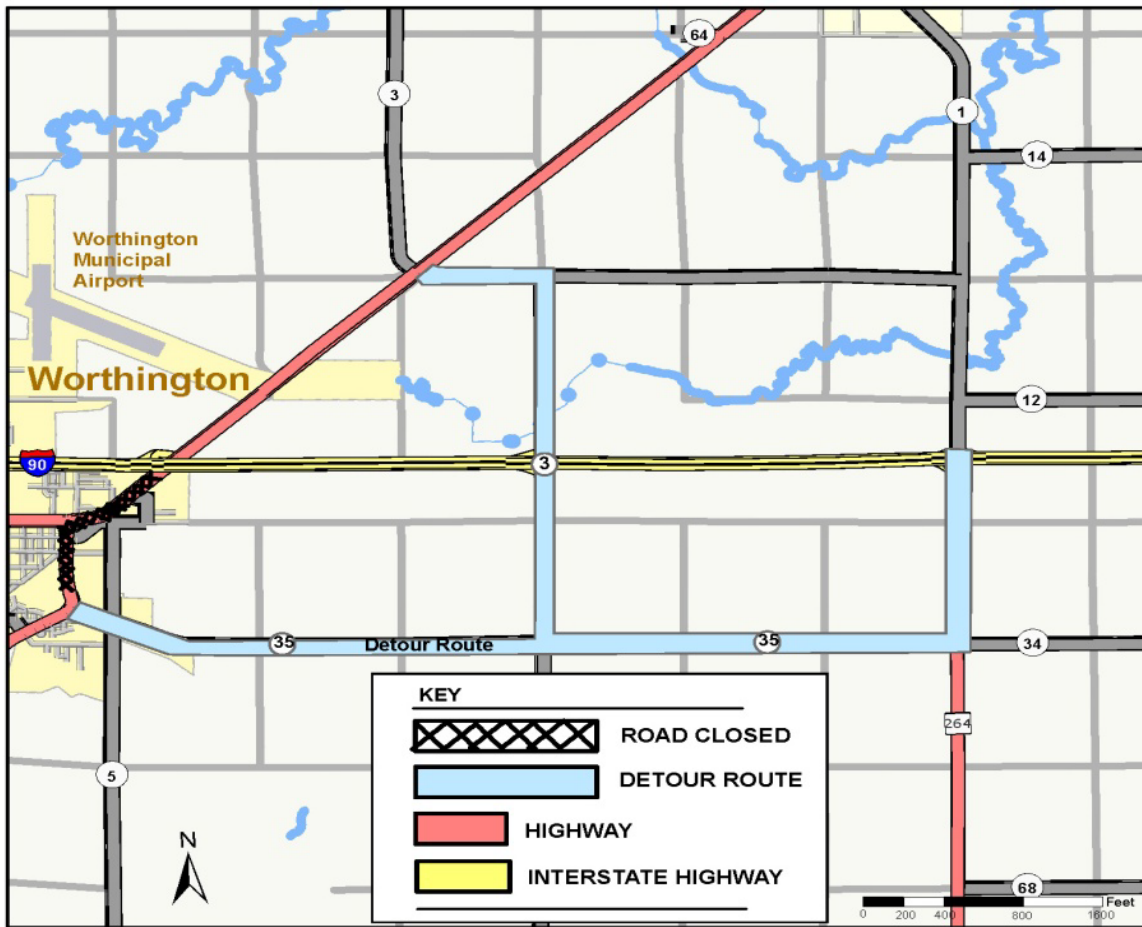


Highway 60 Worthington Four-lane Expansion

Highway 60 Phase 3 Detour for 2013



2013 Schedule:

Phase 3

(N. of County Road 35 to N. of I-90)

Construction: Opens late Fall 2013

- Complete reconstruction of Highway 60 and I-90 ramps in several stages.
- Construction of major storm sewer to drain the Union Pacific railroad bridge underpass
- Includes the construction of roundabouts at the eastbound I-90 ramps and the Highway 59 intersection.
- This project will be followed by a separate landscaping project in 2014.

MnDOT Contact Information:

Bob Williams, Project Engineer

507-831-8026

bob.williams@state.mn.us

Poncho White, Business Liaison

507-822-0809

lonny.white@state.mn.us

Revised: April 2013



Minnesota Department of
Transportation
District 7
2151 Bassett Drive
Mankato, MN 56001-
5302

2013 Schedule:

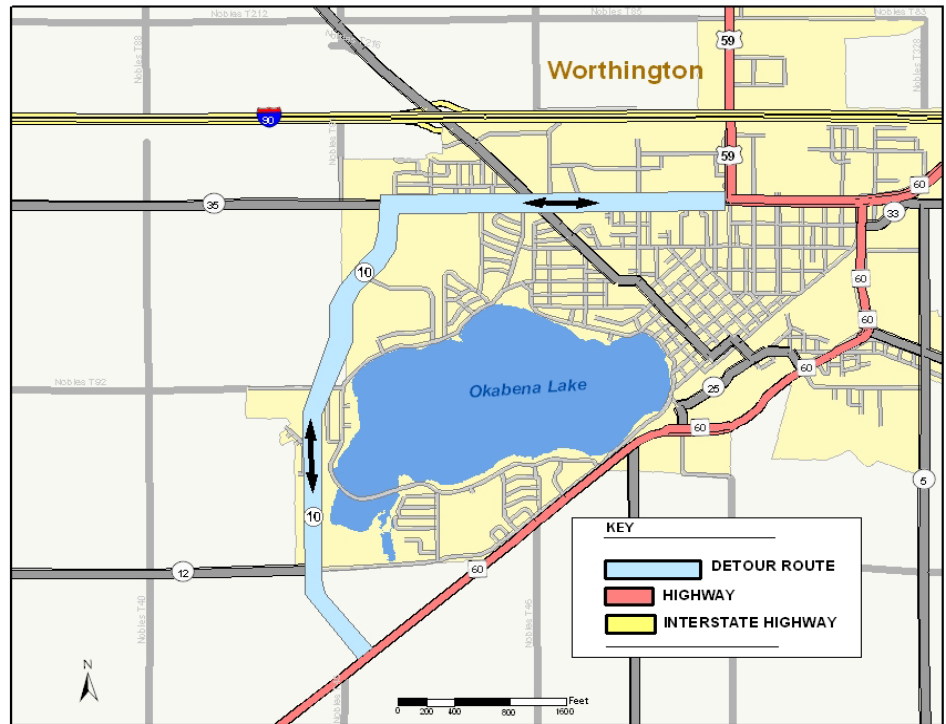
Phase 3

(N. of County Road 35 to N. of I-90)

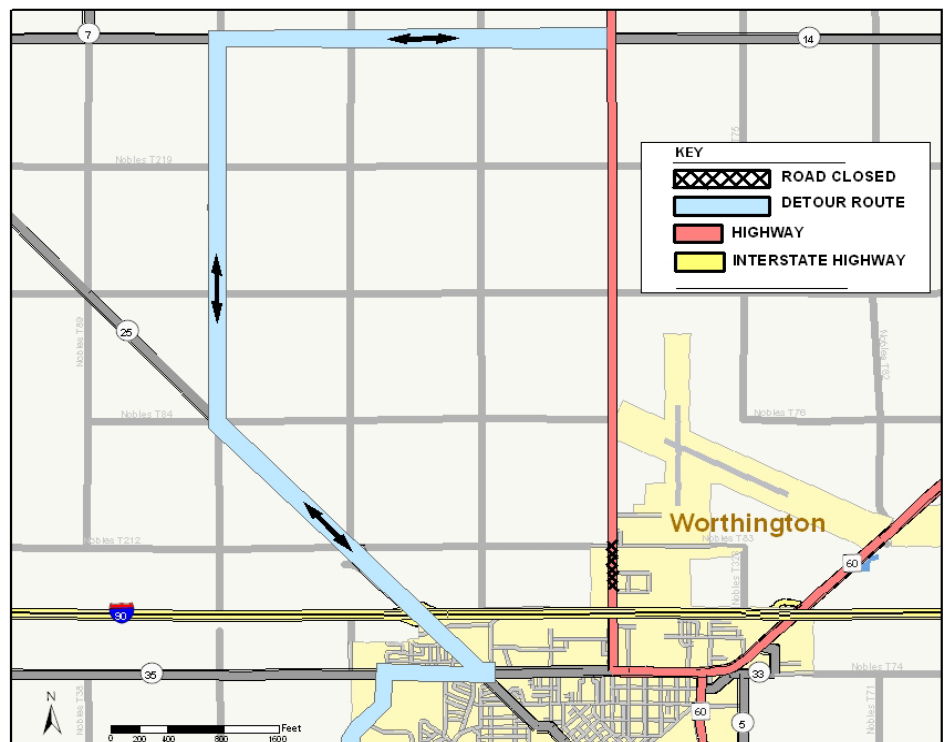
Construction: Opens late Fall 2013

- *Highway 59 traffic will be detoured using Nobles County Road 10.*
- *Highway 60 traffic will be detoured to the east using Nobles County Roads.*
- *Westbound I-90 traffic to and from Highway 60 to the north will remain open.*
- This project will be followed by a separate landscaping project in 2014.

Highway 59 Detour for 2013



Highway 59 Detour for Mid 2013



For more information (including photo-designs and roundabout visuals) go to www.dot.state.mn.us/d7/projects/hwy60/

Project Benefits:

- Provides continuity between adjacent 4-lane sections
- Improves safety with 4-lane divided design and removing skew at intersections
- Increases highway capacity

MnDOT Contact Information:

Bob Williams, Project Engineer

507-831-8026

bob.williams@state.mn.us

Poncho White, Business Liaison

507-822-0809

lonny.white@state.mn.us

Revised: April 2013



Minnesota Department of
Transportation
District 7
2151 Bassett Drive
Mankato, MN 56001-
5302