



## Background

The Winona Bridge is located on Highway 43 in Winona, crossing the Mississippi River and several city streets in Winona. This critical link connects Minnesota Highway 43 to Wisconsin Highway 54 and provides travelers with direct access between downtown Winona, Latsch Island, and communities in Wisconsin.

- Owned by the state of Minnesota
- Built in 1941 and remodeled in 1985
- 2009 average daily traffic volume: 11,100 vehicles; 500 heavy commercial vehicles
- Crosses the Mississippi River, railroad tracks and city streets

## Design

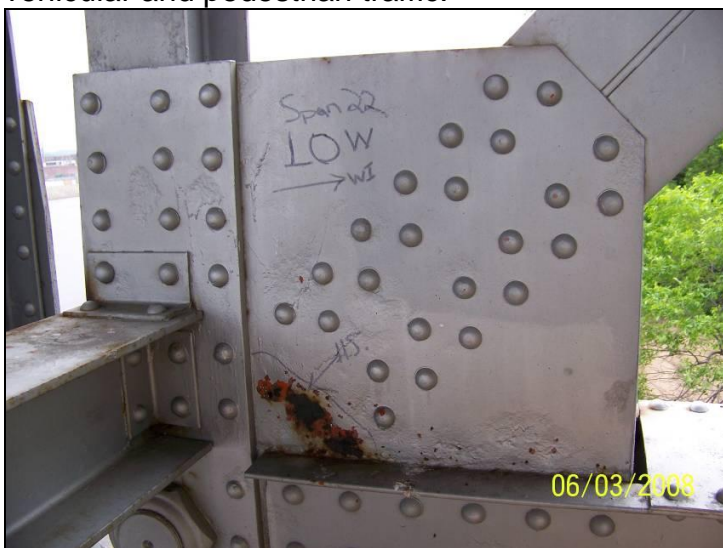
- High truss
- 2,289 feet long with a main span of 450 feet
- 34.4 feet wide
- Carries two lanes of traffic (one in each direction)

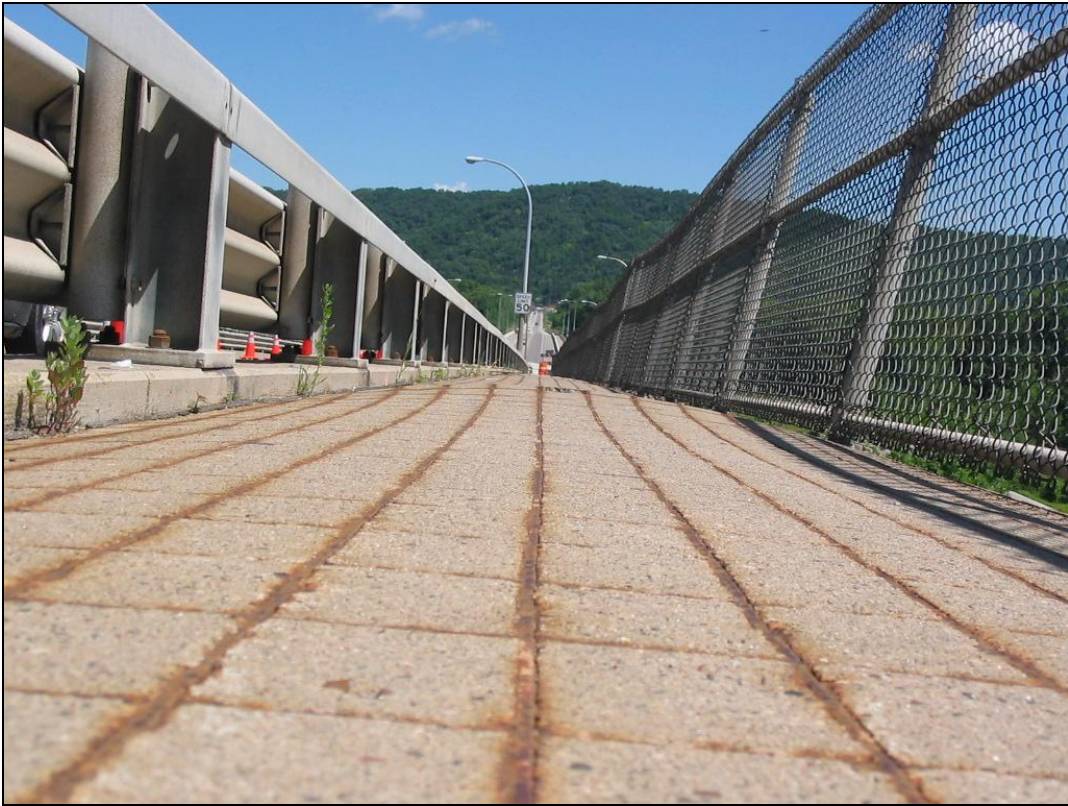
## Project History

In the fall 2008, Mn/DOT initiated the first steps in developing a project to rehabilitate or replace the existing Winona Bridge. The preliminary design process began in early 2009, and is now focusing on rehabilitation options. Stakeholder and public involvement is an integral part of the preliminary design and environmental documentation process. Municipal approval of the preferred alternative will be required from the city of Winona before MnDOT proceeds to final design.

## 2008 Repair Schedule

- Special inspections completed the week of June 2nd, 2008.
- Bridge closed to traffic on June 3<sup>rd</sup>, 2008 due to gusset plate inspection findings.
- Repairs were made to the panel points with deteriorated gusset plates, the sidewalk was replaced, and scattered panel points were painted.
- After the gusset plate repairs were completed, the bridge was reopened to both vehicular and pedestrian traffic.





### **2010 Repair Schedule**

- June 3 – Rehabilitation Study site visit
- Early June – one gusset plate repair after the site visit review for the Rehabilitation Study
- June 21-25 – in-depth bridge inspection commenced
- June 29-July
  - 7-8 repairs directly after the in-depth inspection
  - Weight limits restricted to 40 tons, no overweight permits issued (still is in effect)
- July 26-August 17, 2010 (16 days of onsite repair work)
  - 56 total repairs
  - Removal of deteriorated concrete from under the deck
  - Spot painted the repaired areas and additional corroded areas
  - The project repair work had no unexpected issues or concerns





### **2011 Inspections**

- In July 2011, MnDOT removed loose concrete from the underside of the bridge in downtown Winona.
- Routine inspections in 2011 identified no significant problems and no special maintenance was needed.

## Funding

- Current total project cost estimate is \$150-\$175 Million (2008 dollars), but is dependent on which alternative is selected. The cost estimate includes all project costs including engineering, right of way, and construction. The cost range reflects the unknowns in the project due to the preliminary engineering and environmental processes, which have not yet started. Unknown variables include whether rehabilitation will be selected, approach work impacts, right of way, and environmental mitigation. This estimate reflects a preliminary scoping level estimate. Construction for the project is currently planned to begin after July 1, 2014, but an exact schedule hasn't been determined.
- The bridge is eligible for all sources of Mn/DOT construction funds: including Trunk Highway bonds, Federal Highway funds and state funds.
- The bridge is included as a Tier 1 Bridge in the MN 2008 Laws, Ch. 152, which has advanced the project from 2017 to 2014.



**Contact:** Jai Kalsy, MnDOT senior design engineer, 507/286-7545 or  
Kristin Kammuller, MnDOT community relations coordinator, 507/286-7684  
<http://www.dot.state.mn.us/d6/projects/winonabridge/index.html>