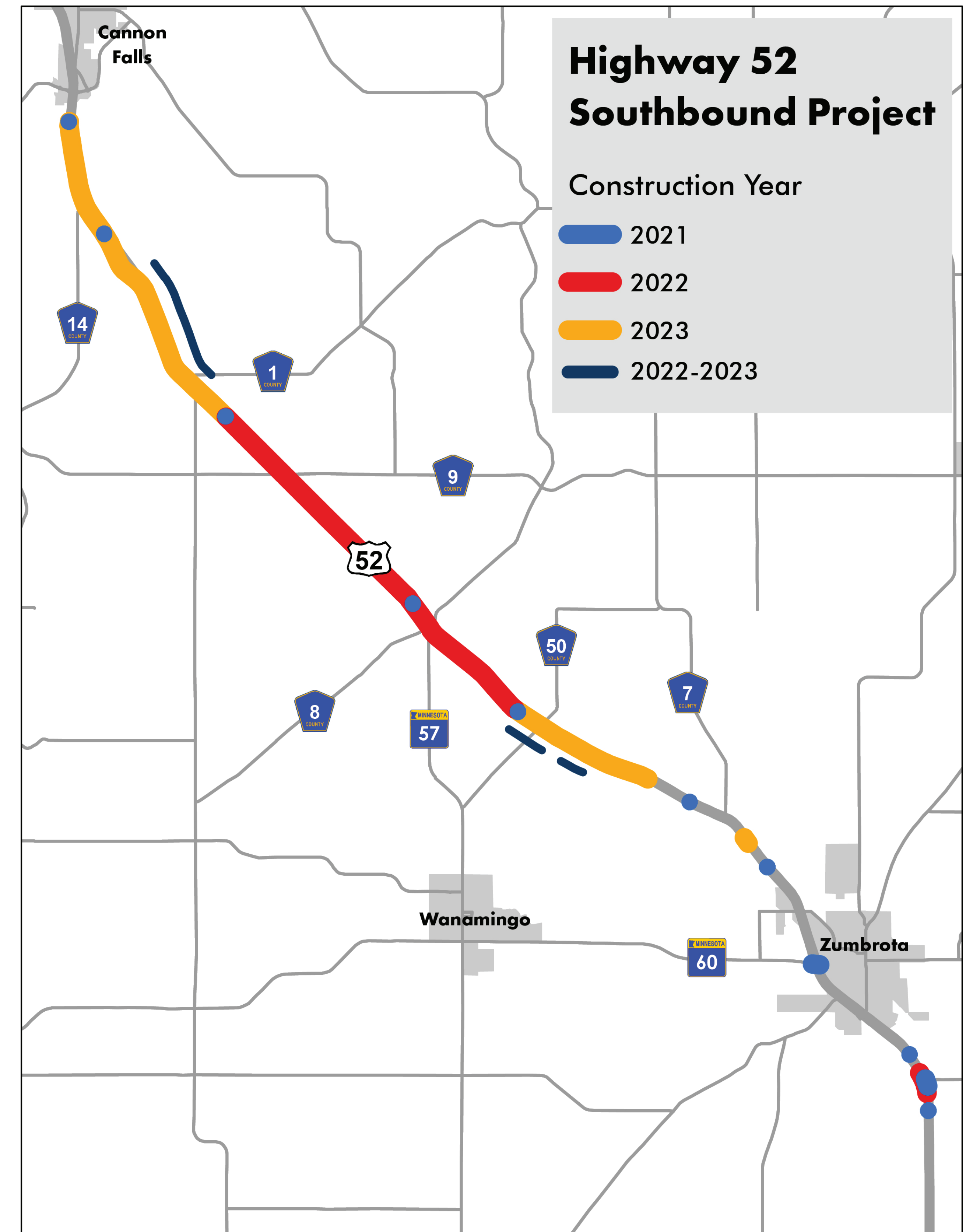




Construction schedule



WELCOME!



What is the purpose of the project?

- Reduce safety risks
- Improve the pavement condition
- Manage access points

What will the project involve and when is it happening?

2021

What has been completed in 2021:

- Various median crossover lanes were constructed on Hwy 52 for future construction work
- Hwy 60 West overpass bridge was replaced
- Northbound Hwy 52 bridge at Hwy 60 East interchange south of Zumbrota was replaced

2022

- Reconstruct Hwy 52 southbound from (4,000 feet north) Goodhue County Road 9 to Goodhue County Road 50

- Construct interchange at Hwy 57 / Goodhue County Road 8 at Hwy 52 - This will include two new bridges on Hwy 52 and Belle Creek Box Culvert replacement
- Replace southbound Hwy 52 bridge at Hwy 60 East interchange
- Construct Goodhue County Road 14 connection, frontage roads, and cul de sacs

2023

- Replace southbound Hwy 52 bridge over Zumbro River
- Reconstruct Hwy 52 southbound from Goodhue County Road 24 in Cannon Falls to (4,000 feet) north of County Road 9
- Reconstruct Hwy 52 southbound from County Road 50 to 1.3 miles north of Goodhue County Road 7
- Construct frontage roads and cul de sacs
- Construct a noisewall along northbound Hwy 52 south of Hwy 58 interchange at Zumbrota

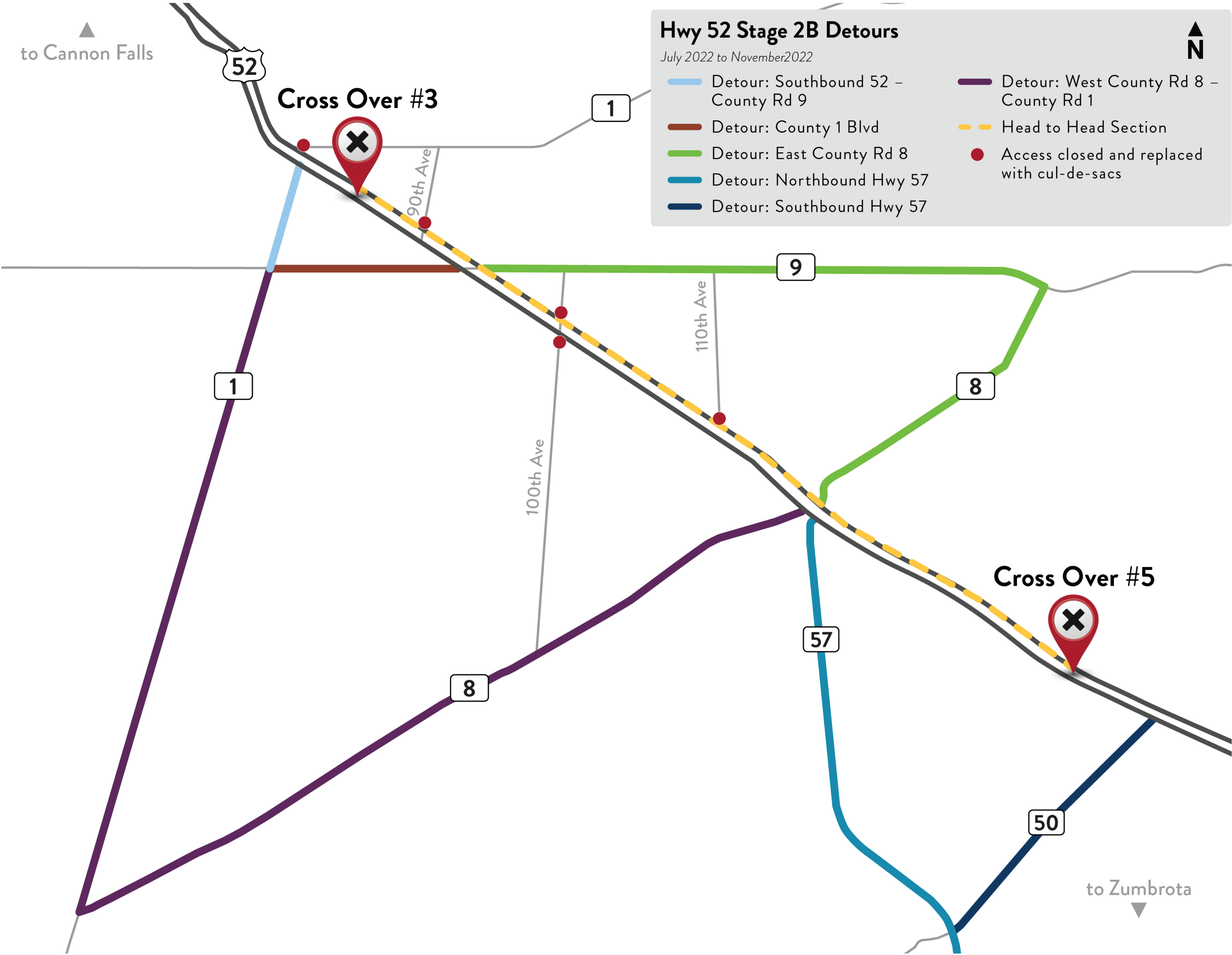
Construction Zones 2022 - Crossovers and Head to Head 2A

Anticipated: April 2022 – July 2022



Construction Zones 2022 – Crossovers and Head to Head 2B

Anticipated: July 2022 – November 2022



Hwy 52 SB Bridge Detour

Anticipated: Mid-May – September 2022



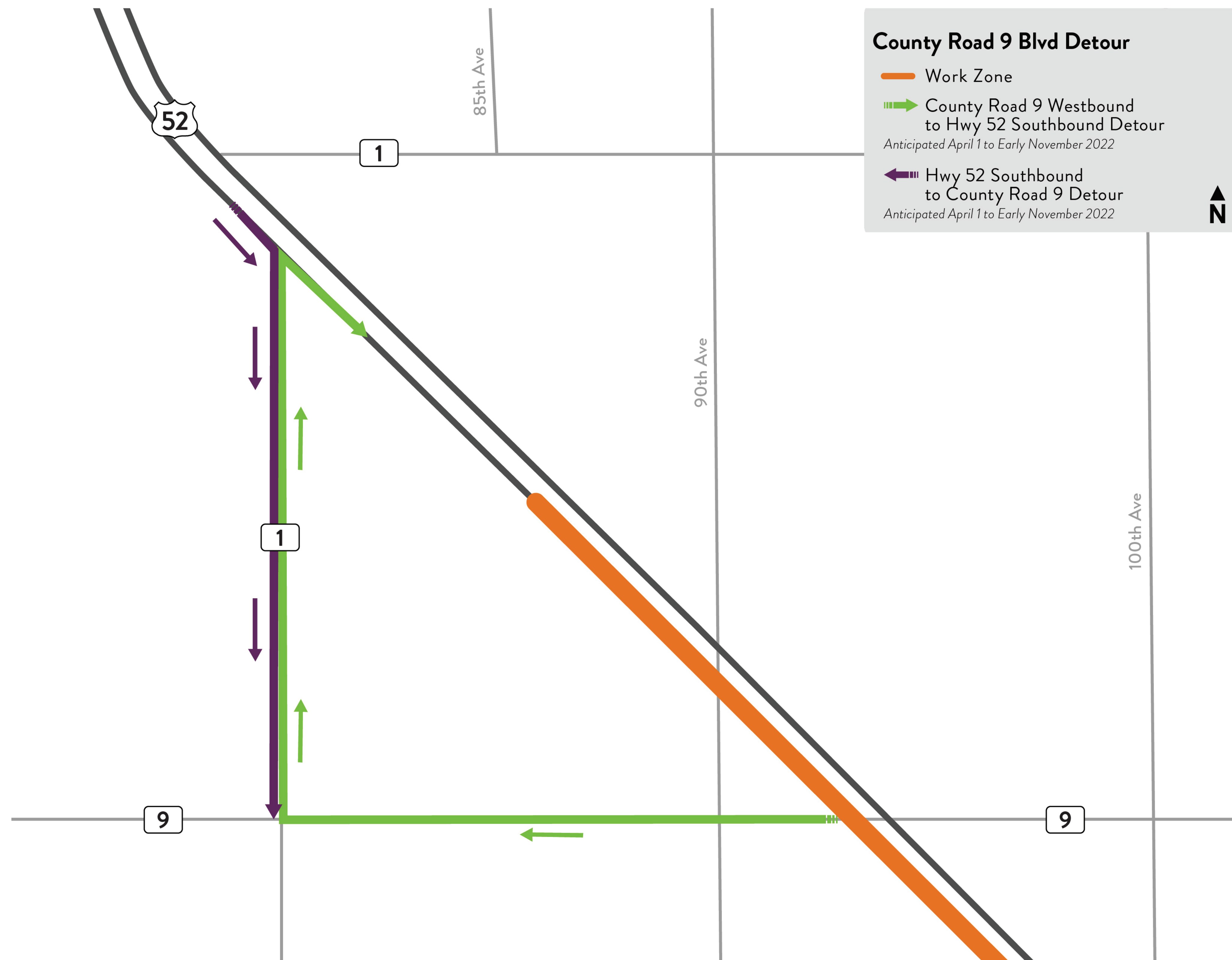
County Road 14 Construction

Anticipated: Mid-April to Mid-June 2022



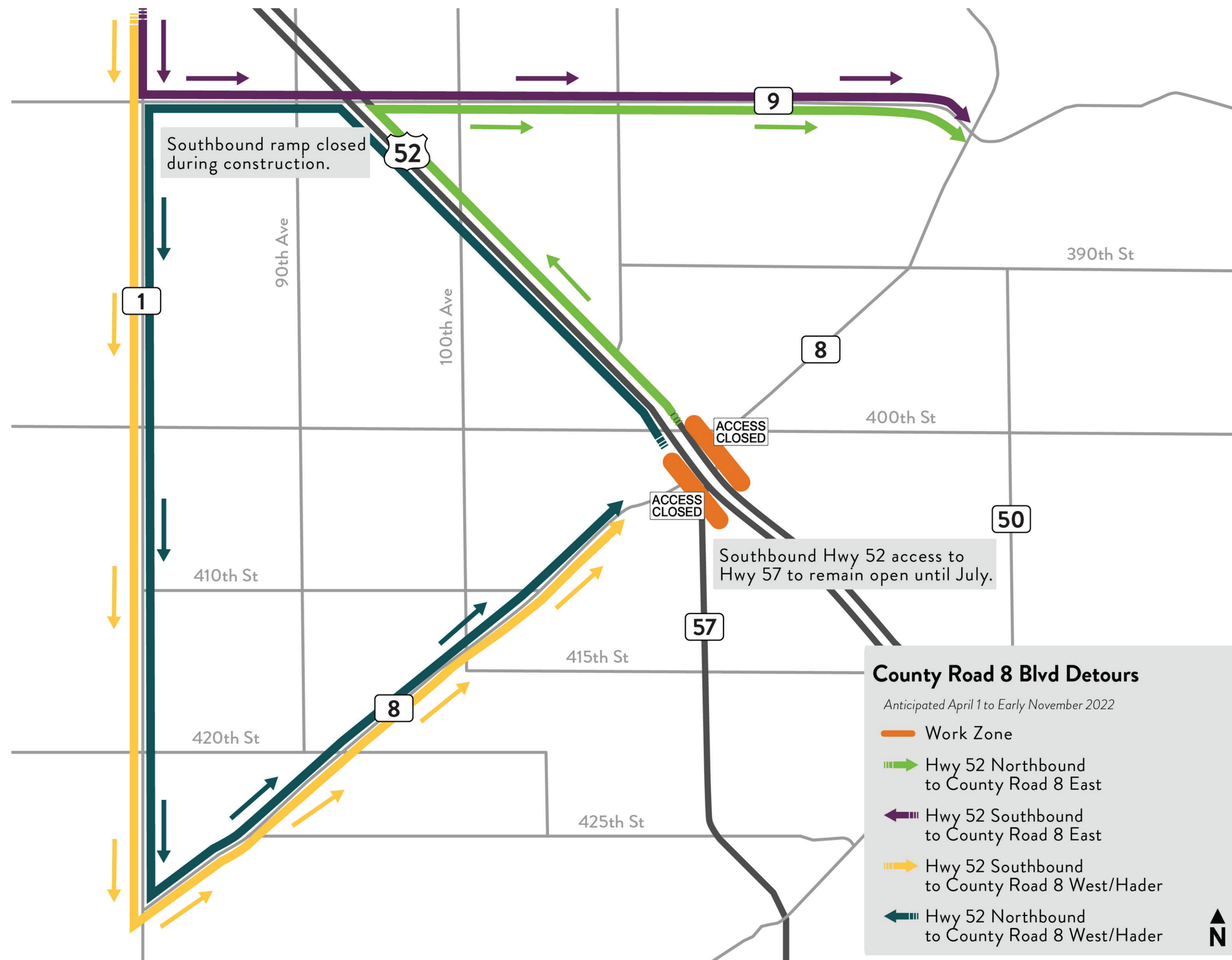
County Road 9 Detour

Anticipated: April 1 to Early November 2022



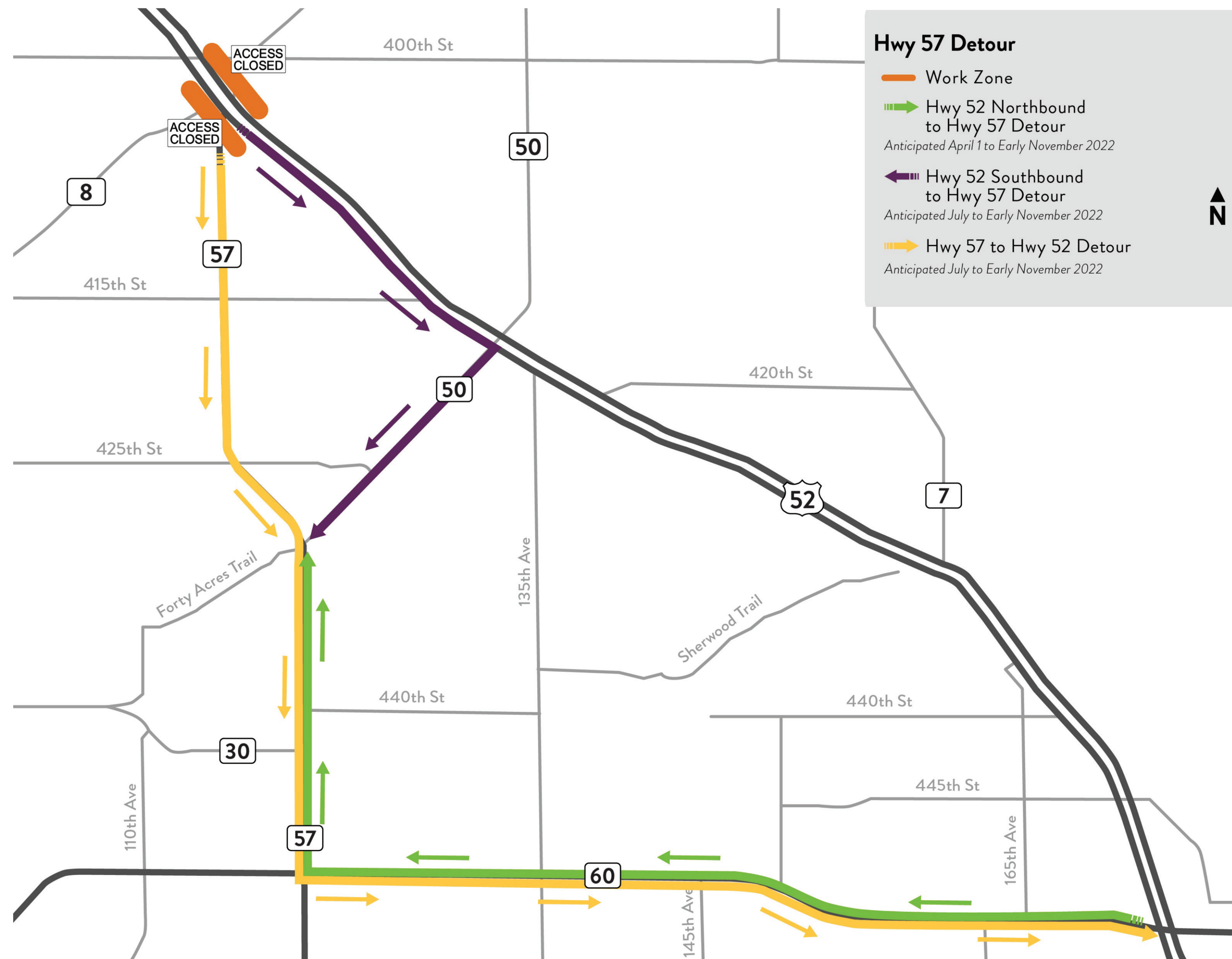
County Road 8 Detour

Anticipated: April to Early November 2022



Hwy 57 Detour

Anticipated: April to Early November 2022



Hader Interchange – Aerial View

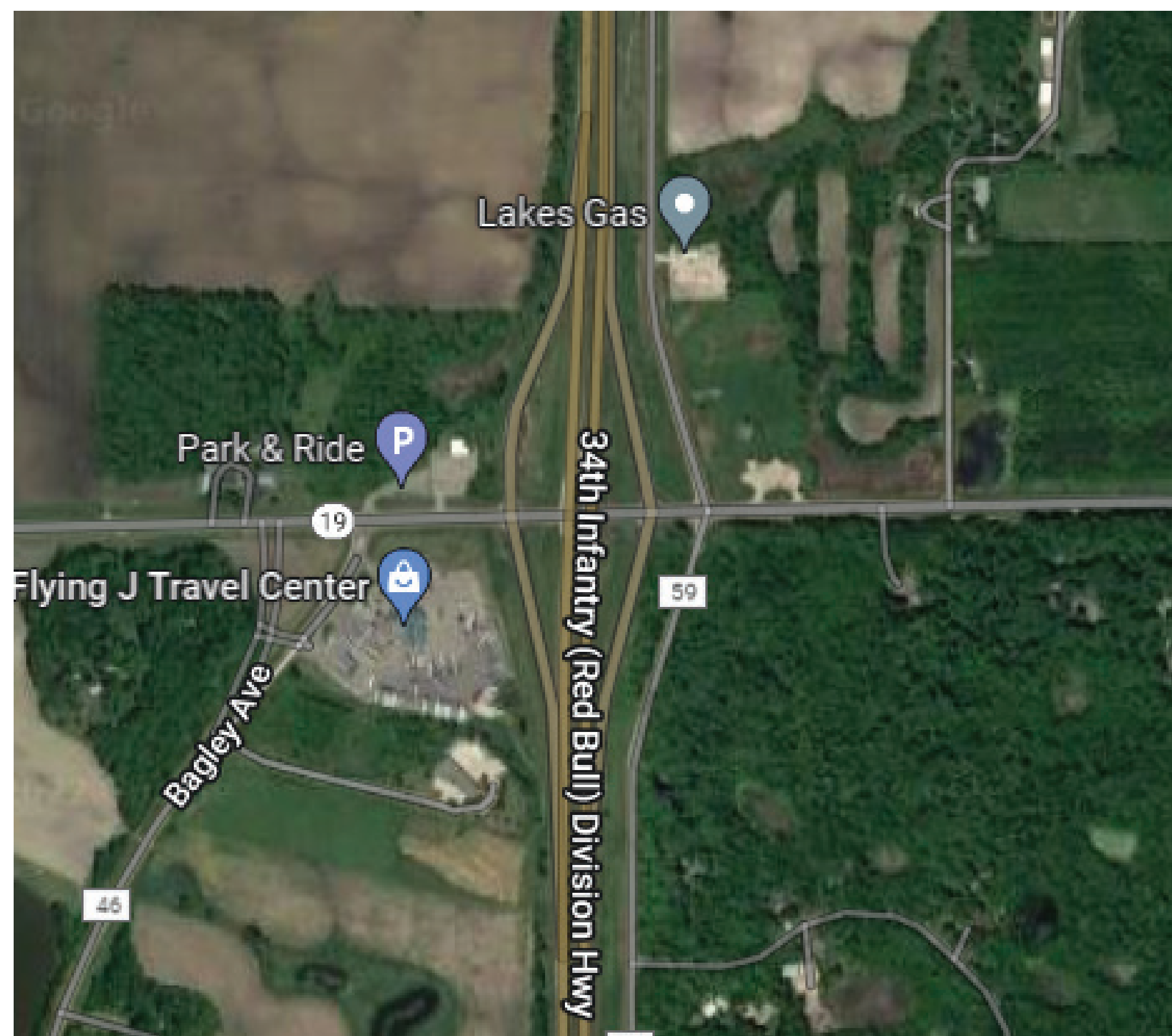


Interchange – Local Examples

**Hwy 19 under I-35
(Northfield)**



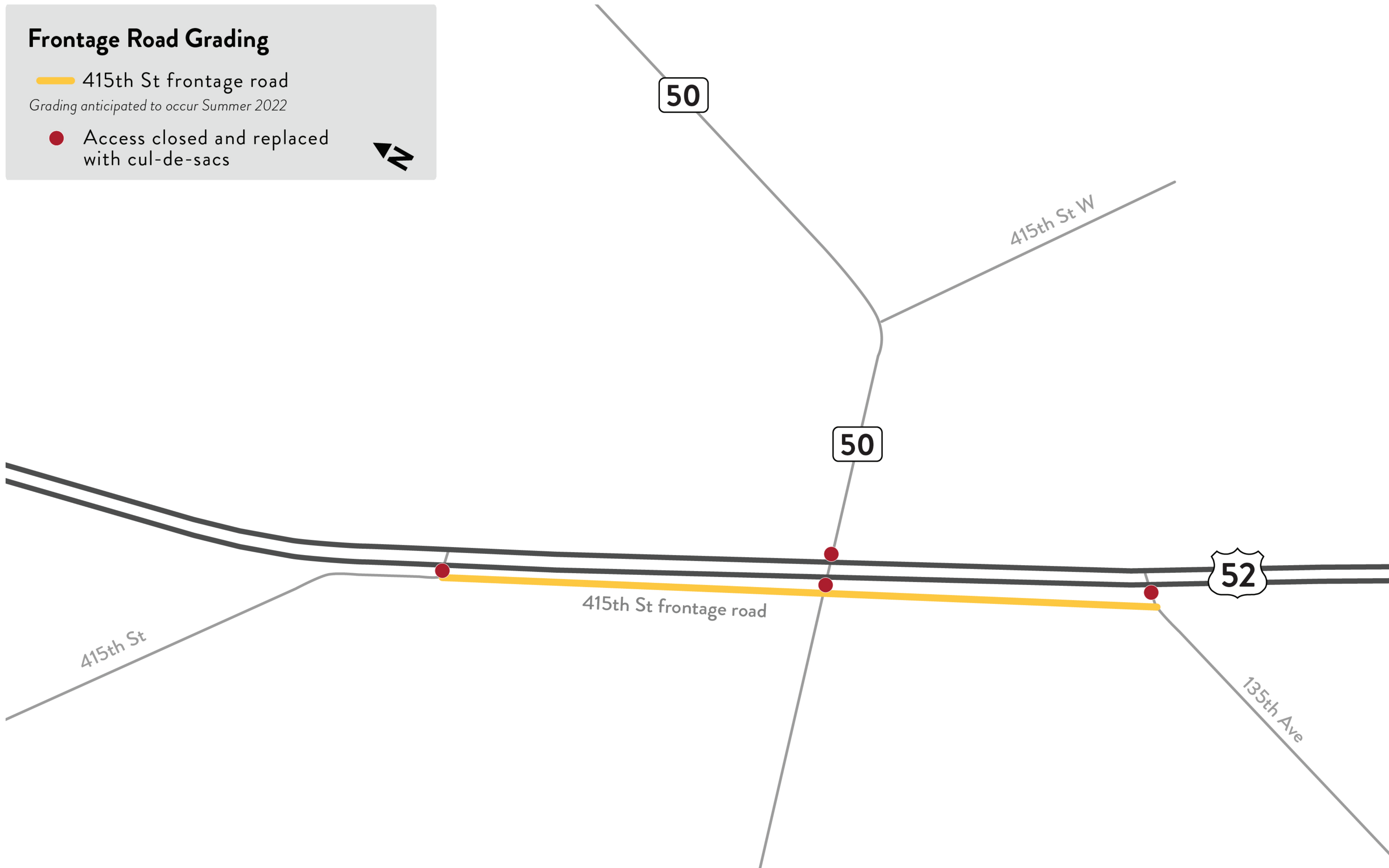
**Hwy 60 Eastbound under
Hwy 52 Southbound (Zumbrota)**



Frontage Roads: Construction



Frontage Roads: Grading



Stay connected, Stay informed

Hwy 52 Zumbrota to Cannon Falls



Updates are posted on MnDOT's District 6 Facebook page and to our email and text subscribers. Follow us on Facebook: @MnDOTSoutheast



Email and text subscribers will get real-time notifications about upcoming construction impacts and public open house events.



Our website has more information and will be updated regularly. Maps, detour routes, and more can be found there as the project progresses.



Contact Communications Manager, Brenda Thomas, brenda.thomas@kljeng.com



Follow us on Twitter: @MnDOTSoutheast



Call the project hotline: (507) 205-9017