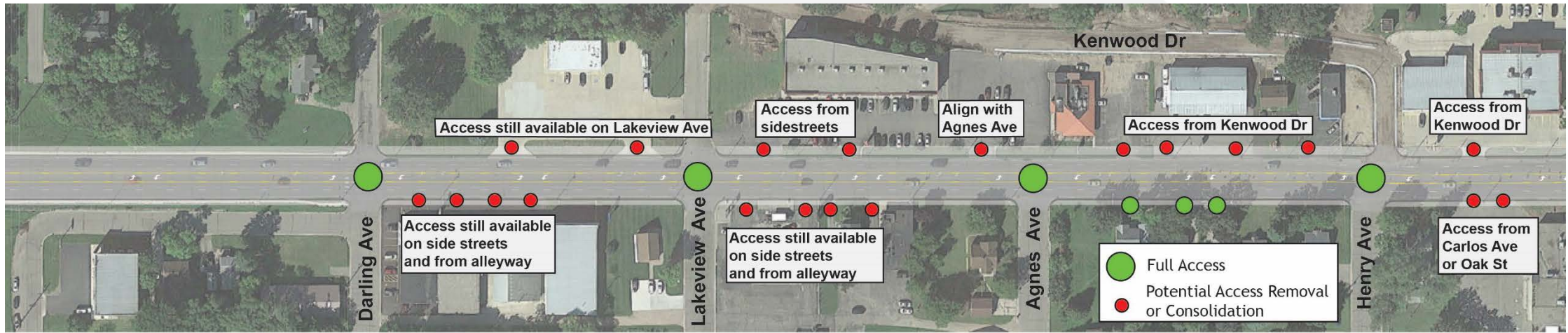


An aerial photograph of an industrial or commercial district, featuring numerous large buildings, parking lots filled with vehicles, and extensive storage areas with stacks of materials. A semi-transparent dark blue rectangular overlay is centered over the image, containing the text 'Corridor: 3rd Avenue to Nokomis Street'. The word 'Corridor:' is in red, while the rest of the text is in white.

Corridor: 3rd Avenue to
Nokomis Street

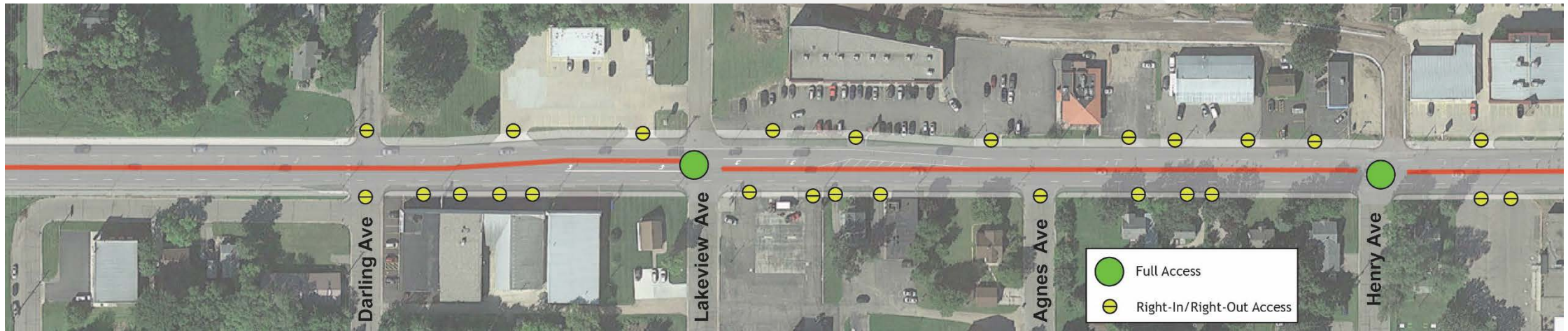
5-Lane Section



Scoring Category	Category Weight	Category Score	Notes	Weighted Score
Vehicle Efficiency and Safety	43	●●●●●●●○	Increased capacity improves traffic flow and improves gap selection for side street vehicles. Consolidation of redundant accesses will reduce the number of conflict points and improve traffic operations and safety.	●●●●●○○○ (5.8)
Bicycle and Pedestrian Connectivity and Safety	24	●●●●●●●○	Adds sidewalks and bicycle facilities (north side shared use path). Access management reduces number of conflicts between cars and pedestrians/bikes.	
Property and Environmental Impacts	18	○○○○○○○○○○	75' typical roadway width would impact business parking on the west side of the corridor and residential yards on the east side of the corridor.	
Cost	16	●●●○○○○○○○	Estimated project cost: \$715k	



4/5 Lanes with Raised Medians



Scoring Category	Category Weight	Category Score	Notes	Weighted Score
Vehicle Efficiency and Safety	43	●●●●●●●○	Increased capacity improves traffic flow and improves gap selection for side street vehicles. Consolidation of redundant accesses will reduce the number of conflict points and improve traffic operations and safety.	●●●●●●○○○ (6.3)
Bicycle and Pedestrian Connectivity and Safety	24	●●●●●●●○	Adds sidewalks and bicycle facilities (north side shared use path). Access management reduces number of conflicts between cars and pedestrians/bikes.	
Property and Environmental Impacts	18	○○○○○○○○○○	70' typical roadway width would impact business parking on the west side of the corridor and residential yards on the east side of the corridor.	
Cost	16	●●●○○○○○○○	Estimated project cost: \$660k	



Summary

Alternative	Scoring Category	Category Weight	Category Score	Weighted Score
Do Nothing	Vehicle Efficiency and Safety	43	○○○○○○○○○○	●●●○○○○○○○ (3.4)
	Bicycle and Pedestrian Connectivity and Safety	24	○○○○○○○○○○	
	Property and Environmental Impacts	18	●●●●●●●●●●	
	Cost	16	●●●●●●●●●●	
Five-Lane Section with Access Management	Vehicle Efficiency and Safety	43	●●●●●●●●○○	●●●●●○○○○○ (5.8)
	Bicycle and Pedestrian Connectivity and Safety	24	●●●●●●●●○○	
	Property and Environmental Impacts	18	○○○○○○○○○○	
	Cost	16	●●●○○○○○○○	
Four/Five-Lane Section With Median	Vehicle Efficiency and Safety	43	●●●●●●●●●○	●●●●●○○○○○ (6.3)
	Bicycle and Pedestrian Connectivity and Safety	24	●●●●●●●●○○	
	Property and Environmental Impacts	18	○○○○○○○○○○	
	Cost	16	●●●○○○○○○○	