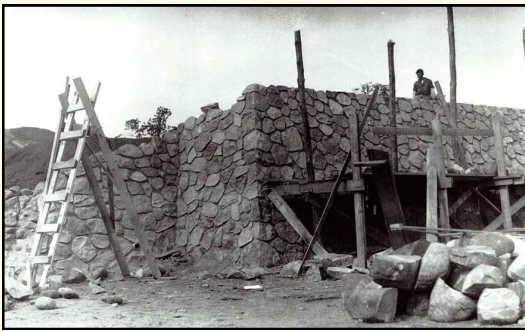


The Garrison Concourse on Highway 169 in Garrison, Minnesota, is roughly 100 miles north of the St. Paul/Minneapolis metro area and is nestled on the western edge of Lake Mille Lacs, one of the state's most popular angling destinations.

The Concourse was constructed by the Civilian Conservation Corps (commonly known as the CCC), one of Franklin Roosevelt's New Deal initiatives, between 1936 and 1939.



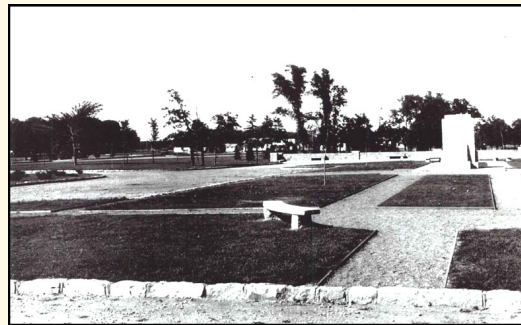
Designed according to the National Park Service Rustic Style and built by the CCC, the Concourse consists of pink and gray native stone. Arching 180 feet into the lake, the Concourse rises a dozen feet above the water and extends over 330 feet along the lakeshore. Considered one of the finest roadside rest areas ever built in Minnesota, the Concourse is currently under consideration for a listing in the National Register of Historic Places.

Sadly, time and the harsh Minnesota weather conditions have taken their toll on this structure

Elements from much of the Concourse have suffered substantial weathering, but the most critical area is the base of the overlook wall, which has been thrashed by waves and ice for seven decades. While the wall remains structurally sound, it is being undermined by wind, waves and weather.

The Minnesota Department of Transportation (Mn/DOT) has been charged with the responsibility to rehabilitate this historic structure.

The time the overlook was built coincided with an extended drought period, including the lowest reported Mille Lacs lake level of 1245.74 feet on October 16, 1936.



Prep work for Garrison Concourse Rehabilitation

Prep work for the rehabilitation of the wall at the historic Garrison Concourse on Mille Lacs Lake began in November, 2010.

Crews salvaged rock from the wall that had fallen into Mille Lacs Lake and documented, then stored the rock over the winter at the Mn/DOT facility in Garrison. Following the salvage operations, temporary riprap was placed to protect the outer wall.

This work was done in an effort to preserve the historical integrity of the site over winter.

The Concourse projects 180 feet into the lake, rises 12 feet out of the water, and extends 336 feet along the shoreline. It was actually built on dry land during the drought years of the Great Depression.



Historic Rehabilitation

Historic rehabilitation began in May 2011, when crews begin installing temporary sheet piling and started dewatering to allow restoration of the outer wall facing the lake.

This work requires the closure of the Concourse to the public. Access to the rest area will be contained to the walleye statue and the grounds. Actual restoration work will begin in August, 2011. The wall will be reconstructed with similar pink and black granite that was used when it was constructed in 1936 by the Civilian Conservation Corps. The outer wall restoration work is scheduled to be completed by the end of November, 2011.

The project is funded with a combination of state and federal funding, which includes money from the American Recovery and Reinvestment Act that provided \$1.2 million for the restoration efforts for the outer wall.

In May, 2010, the Preservation Alliance of Minnesota listed the Garrison Concourse as one of the state's 10 Most Endangered Historic Places. It also was designated one of the 10 Most Endangered Roadside Places by the Society for Commercial Archeology and shares that list with sites along Route 66.

Mn/DOT Contacts

Joe Cameron
Project Supervisor
218-828-5740

Judy Jacobs
Communications Specialist
218-828-5706



Minnesota Department of Transportation
7694 Industrial Park Drive
Baxter, Mn 56425

Your Destination... Our Priority

www.dot.state.mn.us



Garrison Concourse Historic Rehabilitation Project

