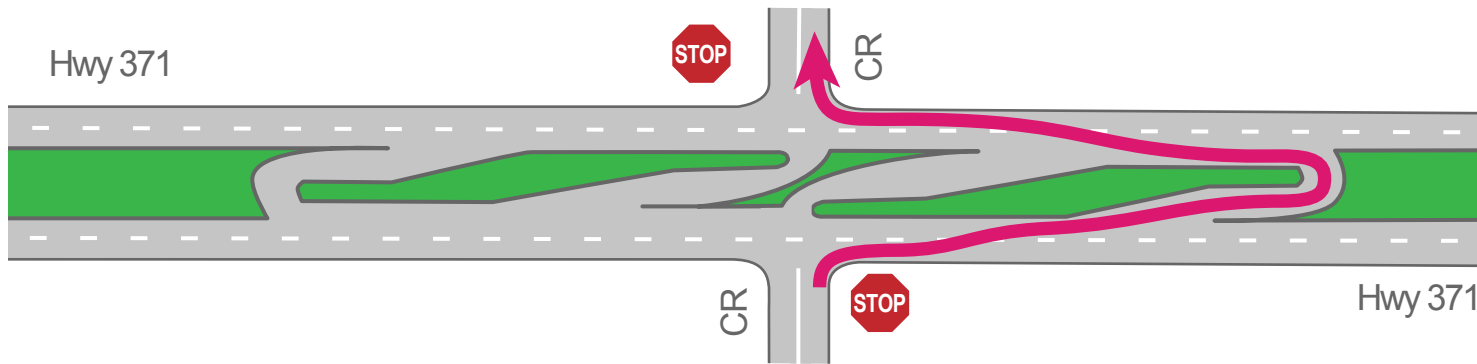
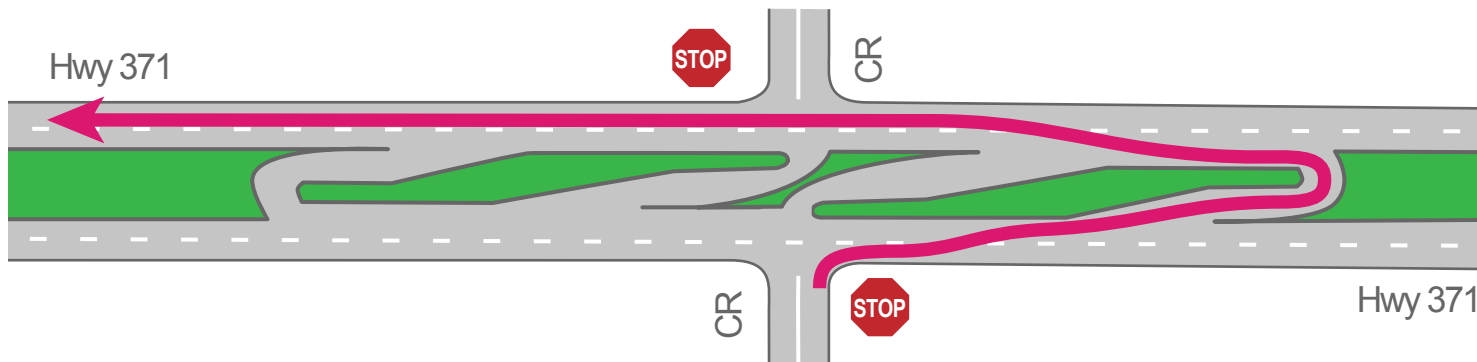


Crossing a divided highway using a Reduced Conflict Intersection



Left hand turn onto a divided highway using a Reduced Conflict Intersection



About RCIs

Reduced Conflict Intersections (RCIs) are intersections that decrease fatalities and injuries caused by broadside crashes on four-lane divided highways. RCIs can also be known as J-Turns or Michigan Lefts.

Pequot Lakes

Two new RCIs opened on Hwy 371 at CR 168/107 and CR 112 in Pequot Lakes on June 6, 2017. The RCIs are part of the four lane expansion project from Nisswa to Jenkins in 2016-2017.

