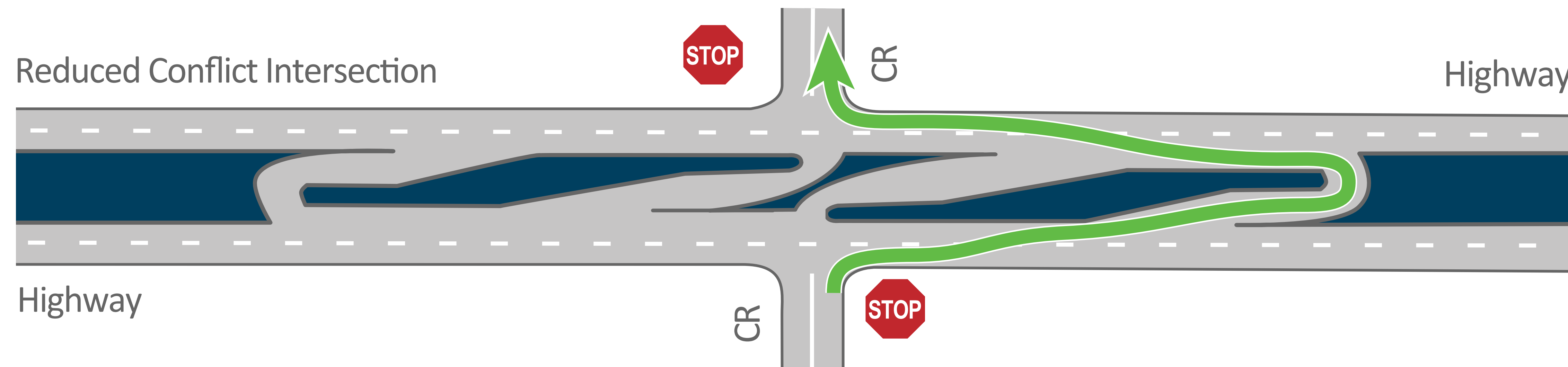
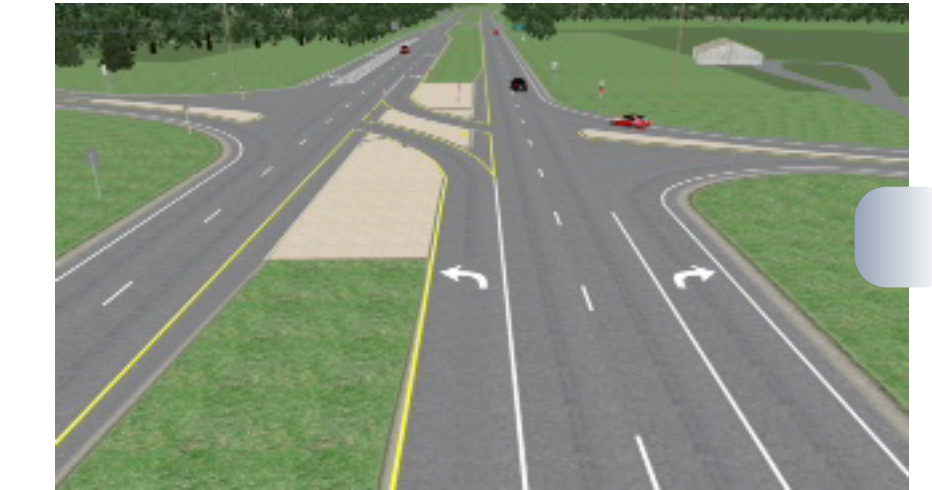
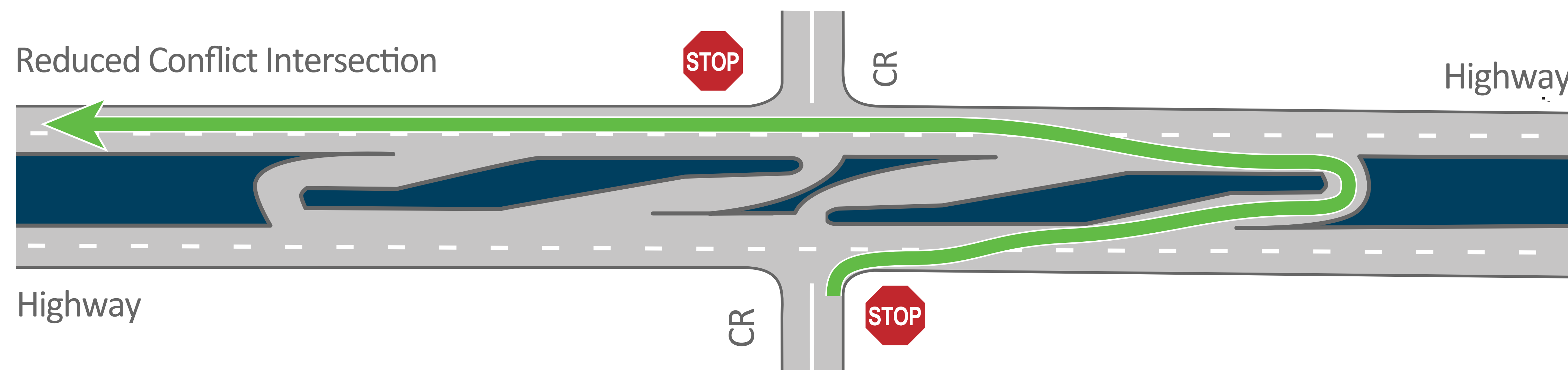


## CROSSING a divided highway



## LEFT HAND TURN onto a divided highway



### About RCIs

**Reduced Conflict Intersections (RCIs)** are intersections that decrease fatalities and injuries caused by broadside crashes on four-lane divided highways. RCIs can also be known as RCUTs or J-Turns

### Benefits of RCIs

**Improved safety**—Studies show a 70 percent reduction in fatalities and a 42 percent reduction in injury crashes where RCIs are used

**Faster to build**—RCIs can be designed and built in approximately one year. Interchanges typically take 3-5 years

**Lower cost**—RCIs are often less expensive than constructing an intersection with a stop light and are a fraction the cost of building an interchange