

United States Department of the Interior
National Park Service

National Register of Historic Places
Continuation Sheet

Section: F

Page 247

Railroads in Minnesota, 1862-1956

Name of Property

Minnesota, Statewide

County and State

Figures

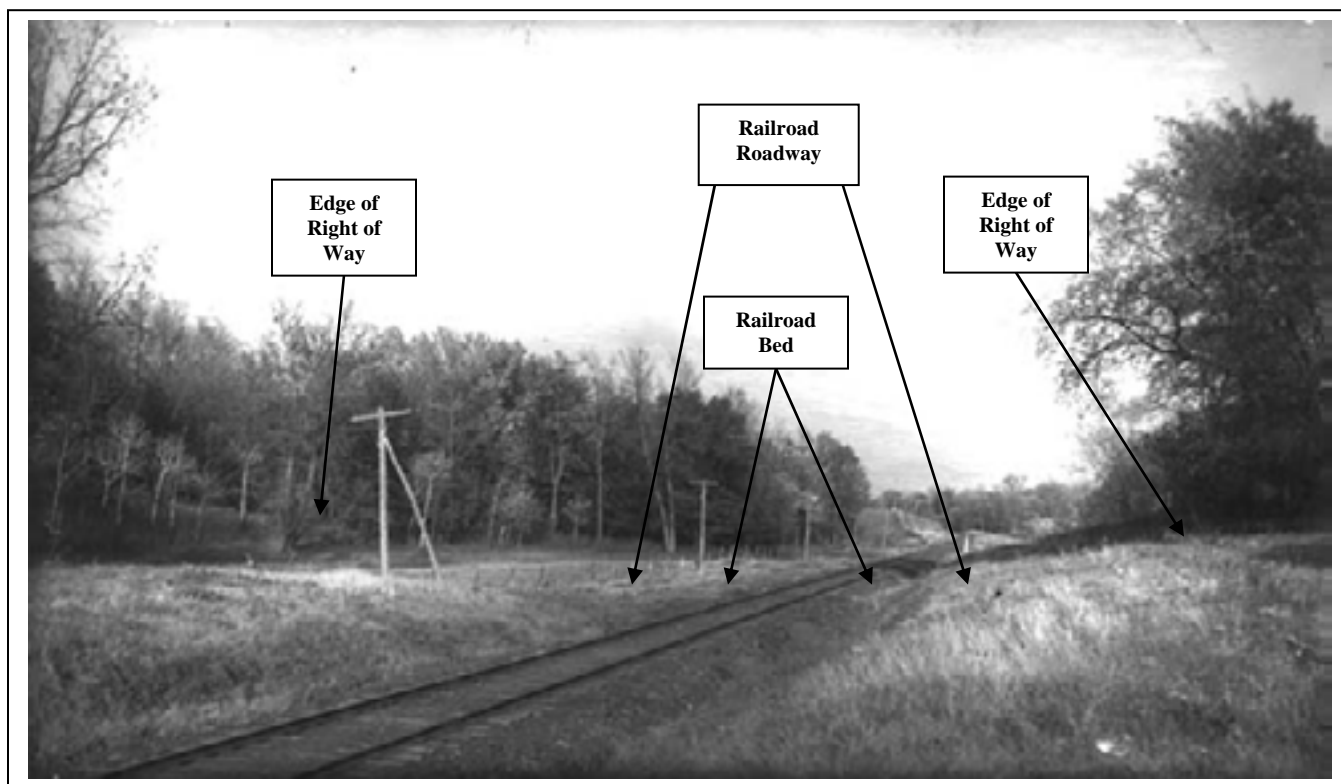


Figure 1. Railroad Corridor, Young America vicinity, ca. 1915

**United States Department of the Interior
National Park Service**

**National Register of Historic Places
Continuation Sheet**

Section: F

Page 248

Railroads in Minnesota, 1862-1956
Name of Property
Minnesota, Statewide
County and State



MHS. Location No. HE6.4 p14

Figure 2. Single-tracked roadway near dalles of the St. Croix River, ca. 1890

United States Department of the Interior
National Park Service

National Register of Historic Places
Continuation Sheet

Section: F

Page 249

Railroads in Minnesota, 1862-1956

Name of Property

Minnesota, Statewide

County and State



MHS Location No. MJ2.9 WL r9

Figure 3. Double-tracked roadway and depot, Wilder, ca. 1909

United States Department of the Interior
National Park Service

National Register of Historic Places
Continuation Sheet

Section: F

Page 250

Railroads in Minnesota, 1862-1956
Name of Property
Minnesota, Statewide
County and State



Figure 4. Multiple tracks at the Union Station, Minneapolis, ca. 1880s

National Register of Historic Places Continuation Sheet

Page 251

Name of Property

County and State

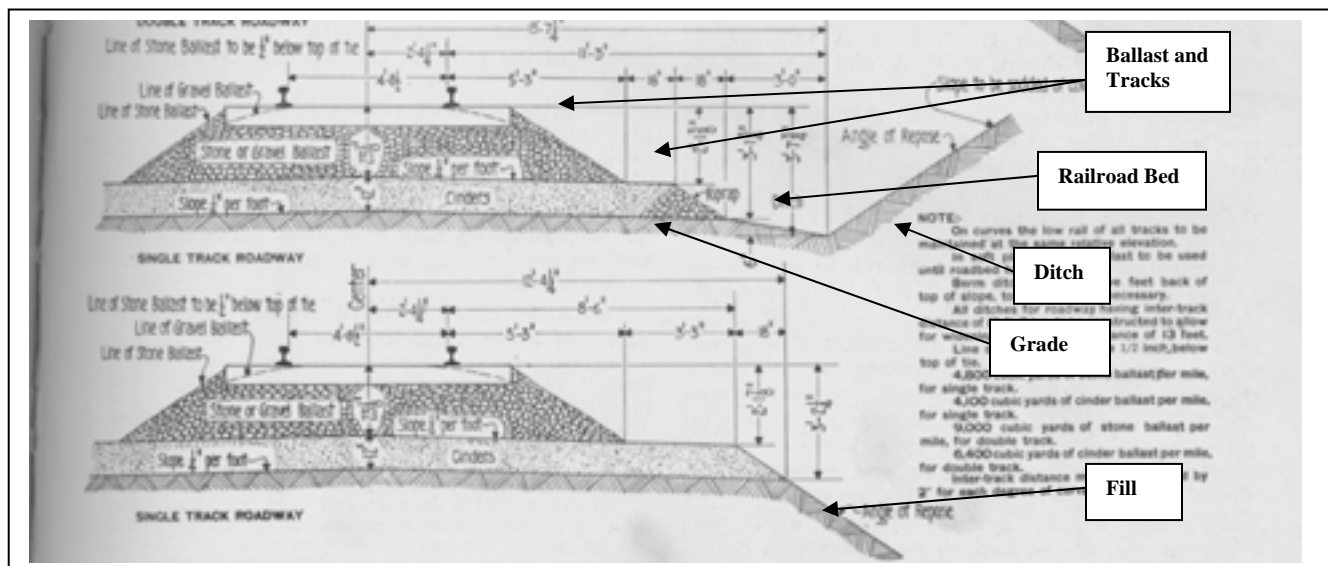


Figure 5. Typical railroad roadway cross section (Howson 1926:95)

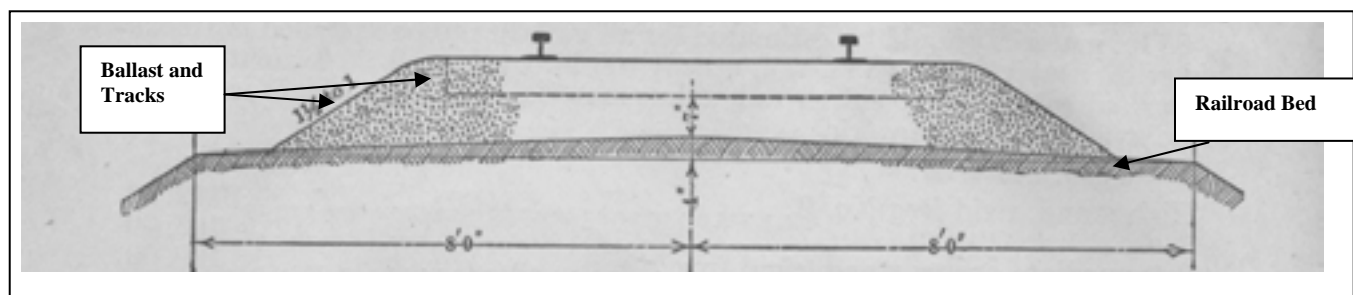


Figure 6. Typical railroad bed, ballast, and tracks (Orrock 1918:14)

**United States Department of the Interior
National Park Service**

**National Register of Historic Places
Continuation Sheet**

Section: F

Page 252

Railroads in Minnesota, 1862-1956
Name of Property
Minnesota, Statewide
County and State



Figure 7. Tracks over typical stone ballast (Howson 1926:146)

**United States Department of the Interior
National Park Service**

**National Register of Historic Places
Continuation Sheet**

Section: F

Page 253

Railroads in Minnesota, 1862-1956
Name of Property
Minnesota, Statewide
County and State

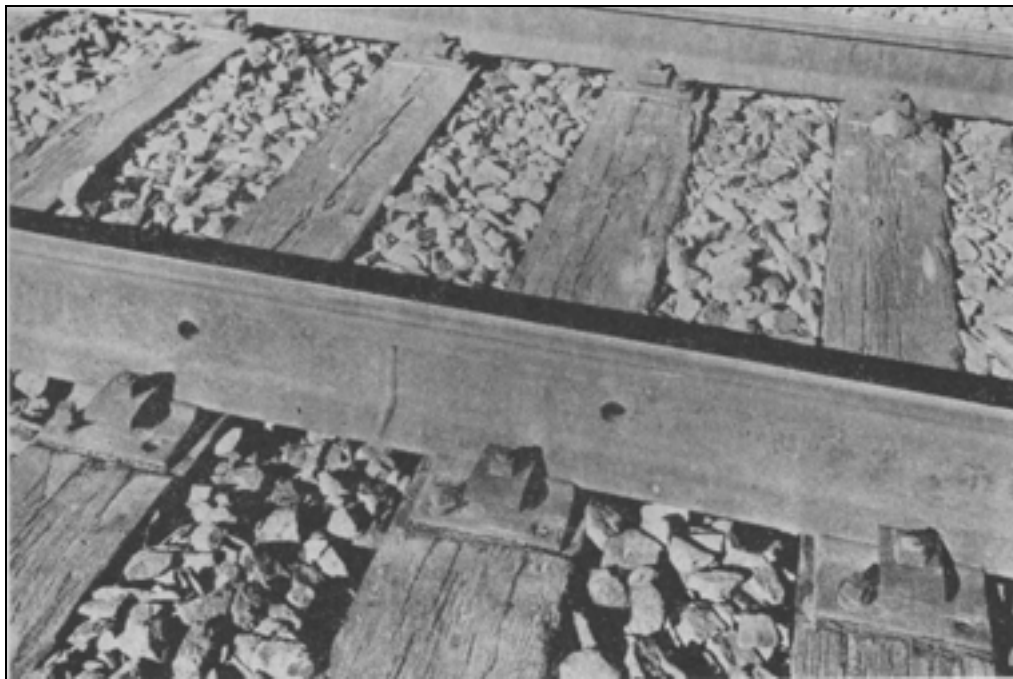


Figure 8. Steel rails on wood ties (Hay 1953:381)

United States Department of the Interior
National Park Service

National Register of Historic Places
Continuation Sheet

Section: F

Page 254

Railroads in Minnesota, 1862-1956

Name of Property

Minnesota, Statewide

County and State

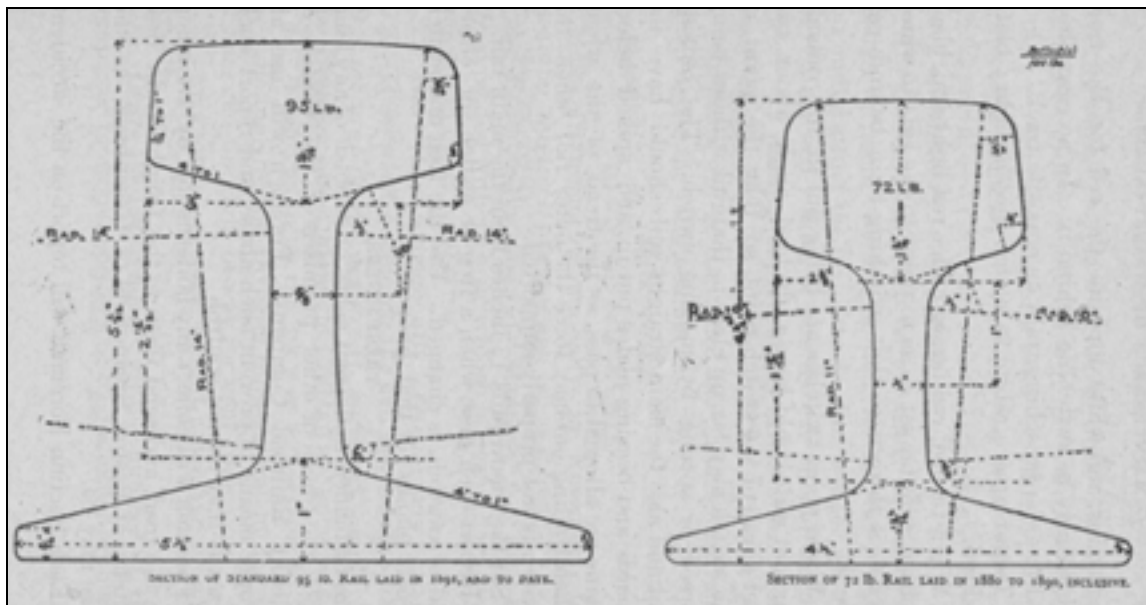


Figure 9. Cross section of "inverted T" profile (Smith 1906:19)



Figure 10. Top and bottom views of tie plate (Howson 1926:235)

**United States Department of the Interior
National Park Service**

**National Register of Historic Places
Continuation Sheet**

Section: F

Page 255

Railroads in Minnesota, 1862-1956
Name of Property
Minnesota, Statewide
County and State



Figure 11. Construction of drainage ditches (Rench 1946:21)

United States Department of the Interior
National Park Service

National Register of Historic Places
Continuation Sheet

Section: F

Page 256

Railroads in Minnesota, 1862-1956

Name of Property

Minnesota, Statewide

County and State



Figure 12. Tile pipe for drainage (Howson 1926:123)

**United States Department of the Interior
National Park Service**

**National Register of Historic Places
Continuation Sheet**

Section: F

Page 257

Railroads in Minnesota, 1862-1956

Name of Property

Minnesota, Statewide

County and State

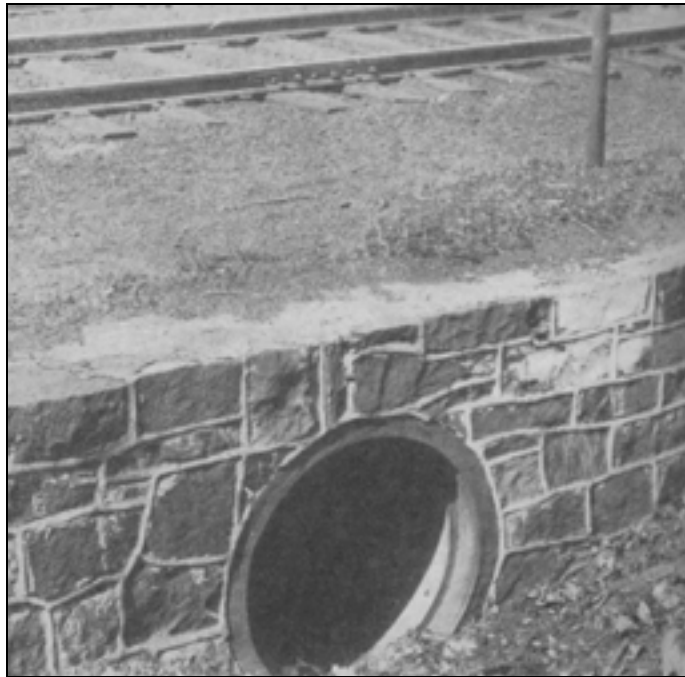


Figure 13. Cast-iron and masonry pipe culvert (Howson 1926:448)



Figure 14. Typical pile trestle bridge (Howson 1926:527)

United States Department of the Interior
National Park Service

National Register of Historic Places
Continuation Sheet

Section: F

Page 258

Railroads in Minnesota, 1862-1956
Name of Property
Minnesota, Statewide
County and State



Figure 15. High steel viaduct (Howson 1926:468)

**United States Department of the Interior
National Park Service**

**National Register of Historic Places
Continuation Sheet**

Section: F

Page 259

Railroads in Minnesota, 1862-1956

Name of Property

Minnesota, Statewide

County and State

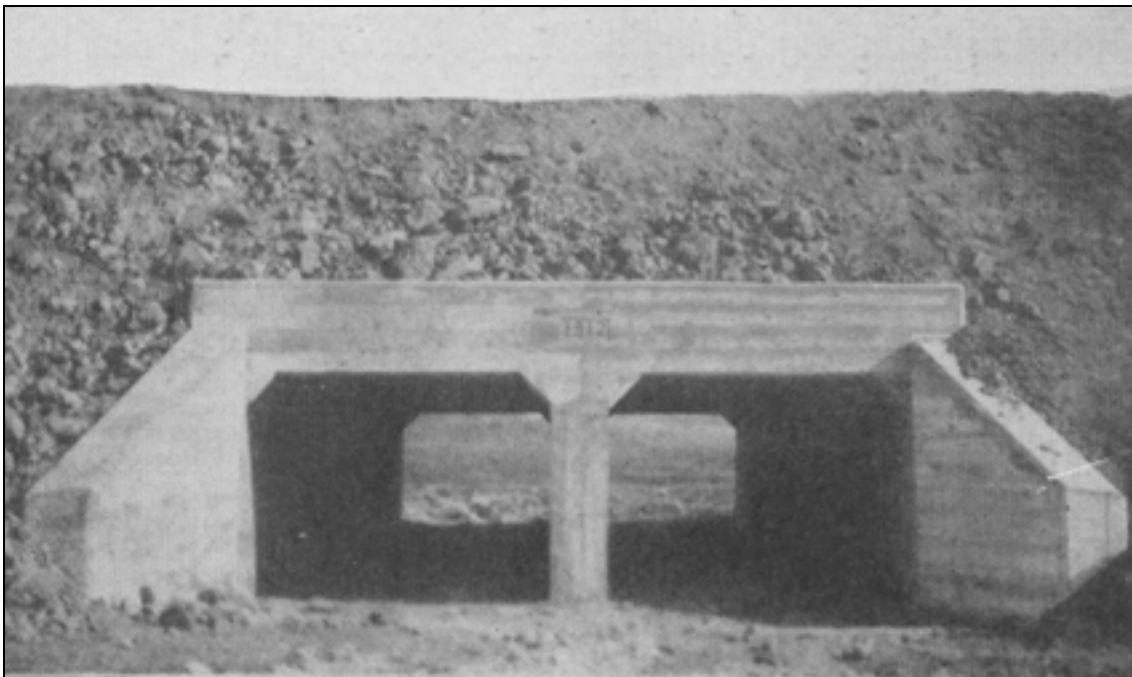


Figure 16. Double concrete box culvert (Howson 1926:445)

United States Department of the Interior
National Park Service

National Register of Historic Places
Continuation Sheet

Section: F

Page 260

Railroads in Minnesota, 1862-1956

Name of Property

Minnesota, Statewide

County and State



Figure 17. Railroad maintenance yard, station, and classification yard, Tracy, 1939

**United States Department of the Interior
National Park Service**

**National Register of Historic Places
Continuation Sheet**

Section: F

Page 261

Railroads in Minnesota, 1862-1956

Name of Property

Minnesota, Statewide

County and State

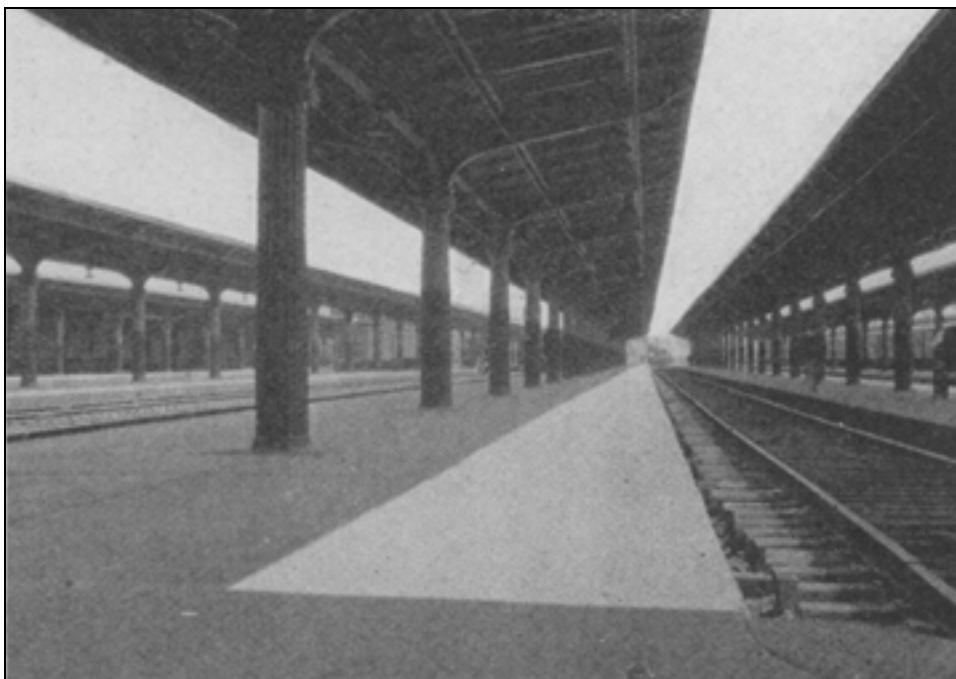


Figure 18. Low concrete passenger platform (Howson 1926:551)

United States Department of the Interior
National Park Service

National Register of Historic Places
Continuation Sheet

Section: F

Page 262

Railroads in Minnesota, 1862-1956

Name of Property

Minnesota, Statewide

County and State



MHS. Location No. MH5.9 F1.3 p43

Figure 19. Flag depot below Fort Snelling, ca. 1880



Figure 20. Passenger depot (Howson 1926:543)

United States Department of the Interior
National Park Service

National Register of Historic Places
Continuation Sheet

Section: F

Page 263

Railroads in Minnesota, 1862-1956

Name of Property

Minnesota, Statewide

County and State



Figure 21. Combination depot at Echo, ca. 1910s (Hofsommer 2005:235)

**United States Department of the Interior
National Park Service**

**National Register of Historic Places
Continuation Sheet**

Section: F

Page 264

Railroads in Minnesota, 1862-1956
Name of Property
Minnesota, Statewide
County and State



MHS. Location No. MH5.9 MP8 r167

Figure 22. Union Depot, Minneapolis, 1890

United States Department of the Interior
National Park Service

National Register of Historic Places
Continuation Sheet

Section: F

Page 265

Railroads in Minnesota, 1862-1956

Name of Property

Minnesota, Statewide

County and State



Figure 23. Railroad storage warehouse (Howson 1926:556)

United States Department of the Interior
National Park Service

National Register of Historic Places
Continuation Sheet

Section: F

Page 266

Railroads in Minnesota, 1862-1956

Name of Property

Minnesota, Statewide

County and State



MHS. Location No. MI8.9 BC p1

Figure 24. Section house at Ball Club, ca. 1900

**United States Department of the Interior
National Park Service**

**National Register of Historic Places
Continuation Sheet**

Section: F

Page 267

Railroads in Minnesota, 1862-1956

Name of Property

Minnesota, Statewide

County and State



Figure 25. Water tank (Howson 1926:734)

**United States Department of the Interior
National Park Service**

**National Register of Historic Places
Continuation Sheet**

Section: F

Page 268

Railroads in Minnesota, 1862-1956

Name of Property

Minnesota, Statewide

County and State



Figure 26. Coaling station (Howson 1926:567)

United States Department of the Interior
National Park Service

National Register of Historic Places
Continuation Sheet

Section: F

Page 269

Railroads in Minnesota, 1862-1956

Name of Property

Minnesota, Statewide

County and State

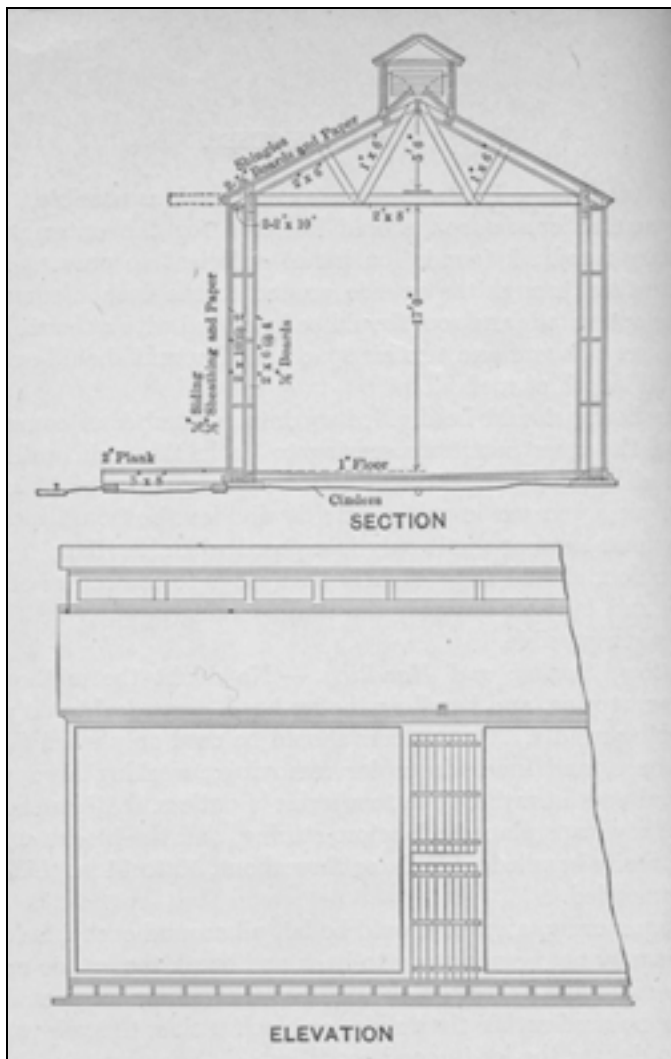


Figure 27. Typical ice house drawings (Orrock 1918:398)

**United States Department of the Interior
National Park Service**

**National Register of Historic Places
Continuation Sheet**

Section: F

Page 270

Railroads in Minnesota, 1862-1956

Name of Property

Minnesota, Statewide

County and State



Figure 28. Interlocking tower (Howson 1926:792)

United States Department of the Interior
National Park Service

National Register of Historic Places
Continuation Sheet

Section: F

Page 271

Railroads in Minnesota, 1862-1956

Name of Property

Minnesota, Statewide

County and State

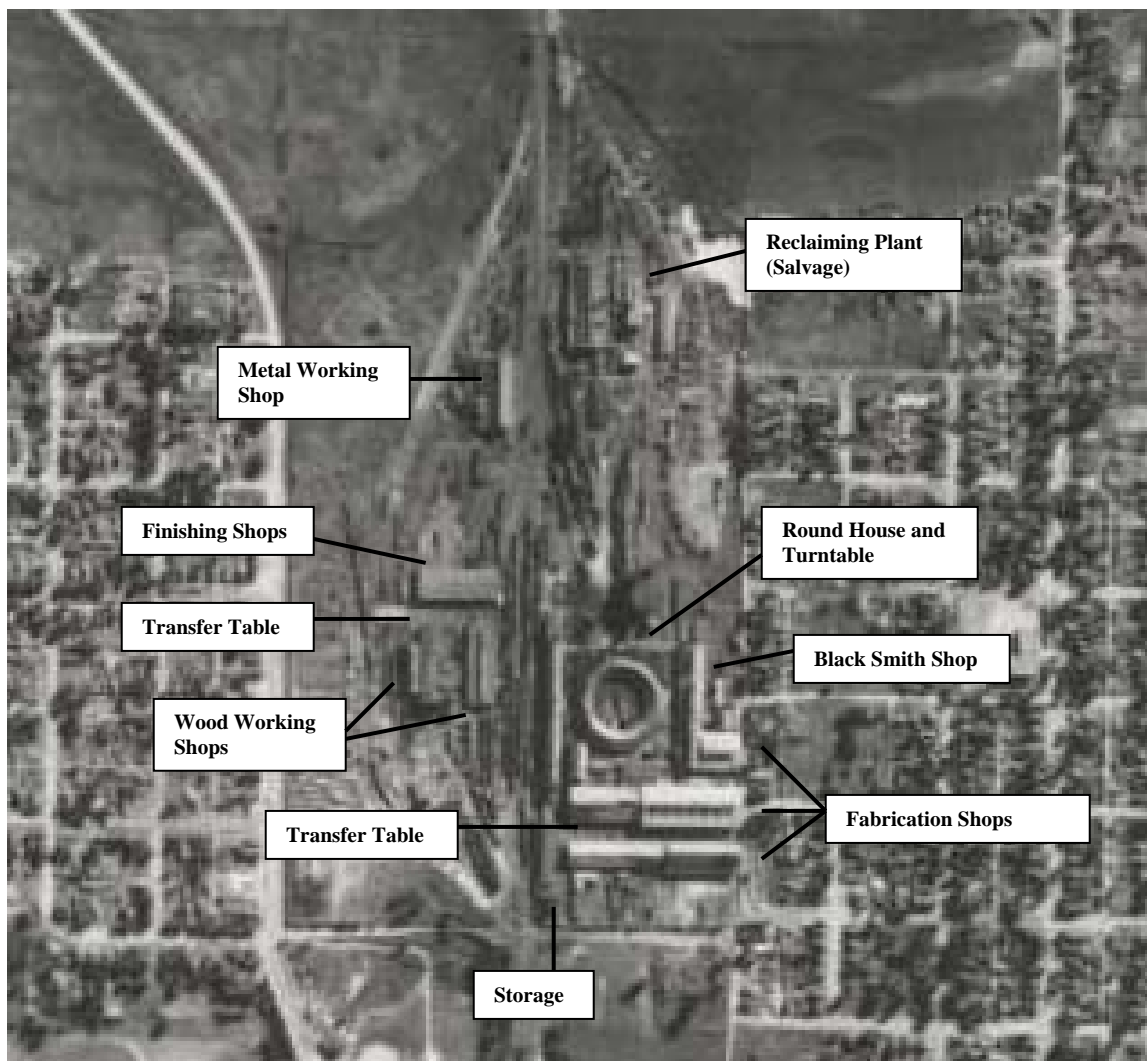


Figure 29. Railroad yards with shop complex, Brainerd, 1939

United States Department of the Interior
National Park Service

National Register of Historic Places
Continuation Sheet

Section: F

Page 272

Railroads in Minnesota, 1862-1956

Name of Property

Minnesota, Statewide

County and State



Figure 30. Northern Pacific railroad yard, St. Paul, 1899



Figure 31. Engine house (Howson 1926:561)

United States Department of the Interior
National Park Service

National Register of Historic Places
Continuation Sheet

Section: F

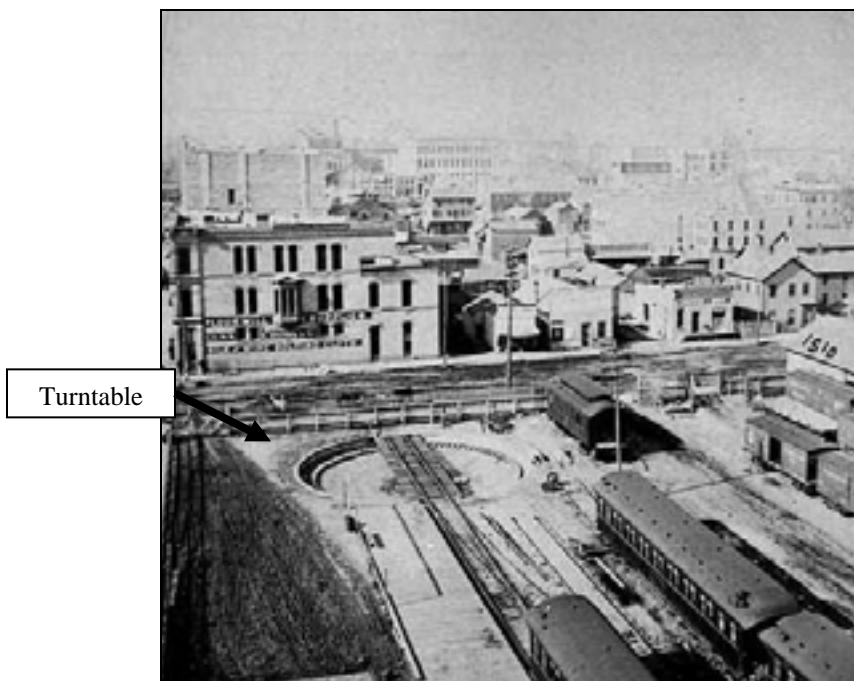
Page 273

Railroads in Minnesota, 1862-1956

Name of Property

Minnesota, Statewide

County and State



MHS Location No. HE6.7M r3

Figure 32. Railroad yard with turntable, Minneapolis, ca. 1880

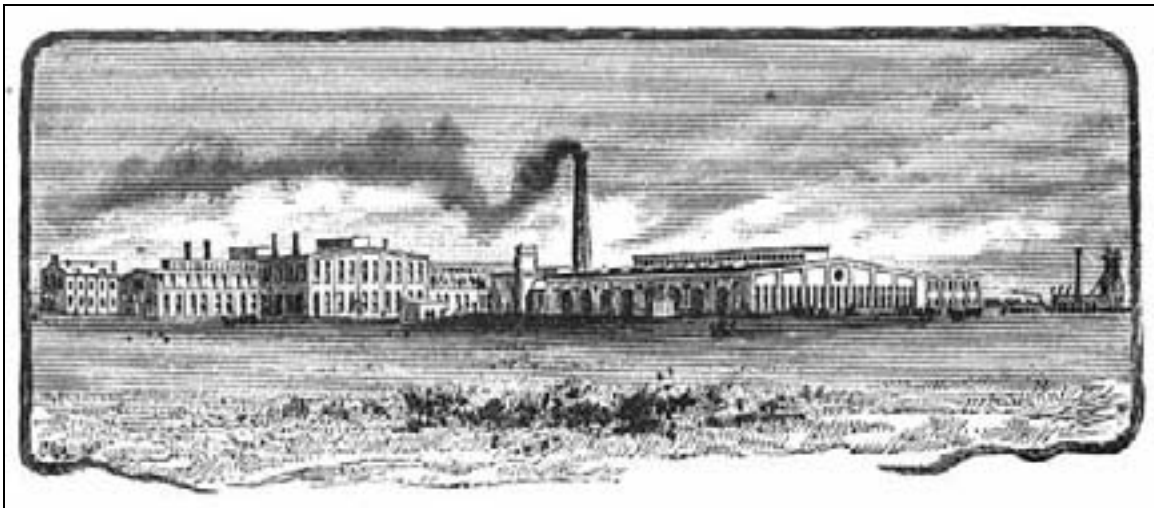
**United States Department of the Interior
National Park Service**

**National Register of Historic Places
Continuation Sheet**

Section: F

Page 274

Railroads in Minnesota, 1862-1956
Name of Property
Minnesota, Statewide
County and State



MHS Location No. MR2.9 SP3.1N p121

Figure 33. Rendering of Northern Pacific Como Shops, St. Paul, 1886

**United States Department of the Interior
National Park Service**

**National Register of Historic Places
Continuation Sheet**

Section: F

Page 275

Railroads in Minnesota, 1862-1956

Name of Property

Minnesota, Statewide

County and State

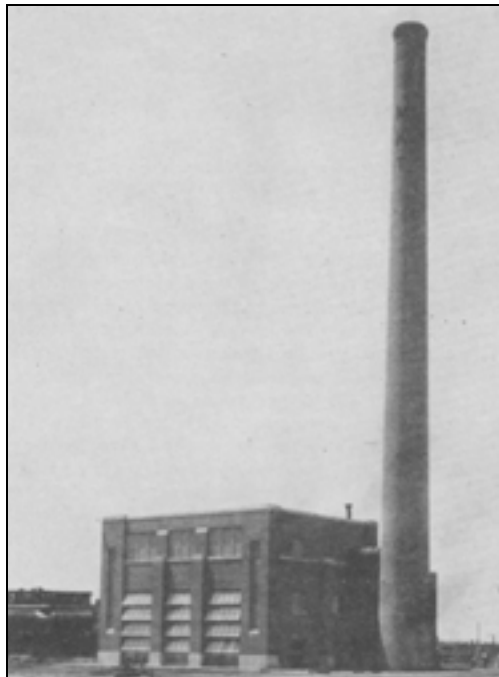


Figure 34. Power house (Howson 1926:585)

United States Department of the Interior
National Park Service

National Register of Historic Places
Continuation Sheet

Section: F

Page 276

Railroads in Minnesota, 1862-1956
Name of Property
Minnesota, Statewide
County and State



Figure 35. Ash pit at Connecticut Eastern Railroad Museum, Willimantic, CT

**United States Department of the Interior
National Park Service**

**National Register of Historic Places
Continuation Sheet**

Section: F

Page 277

Railroads in Minnesota, 1862-1956

Name of Property

Minnesota, Statewide

County and State



Figure 36. Northern Pacific office and shops, Brainerd, ca. 1875