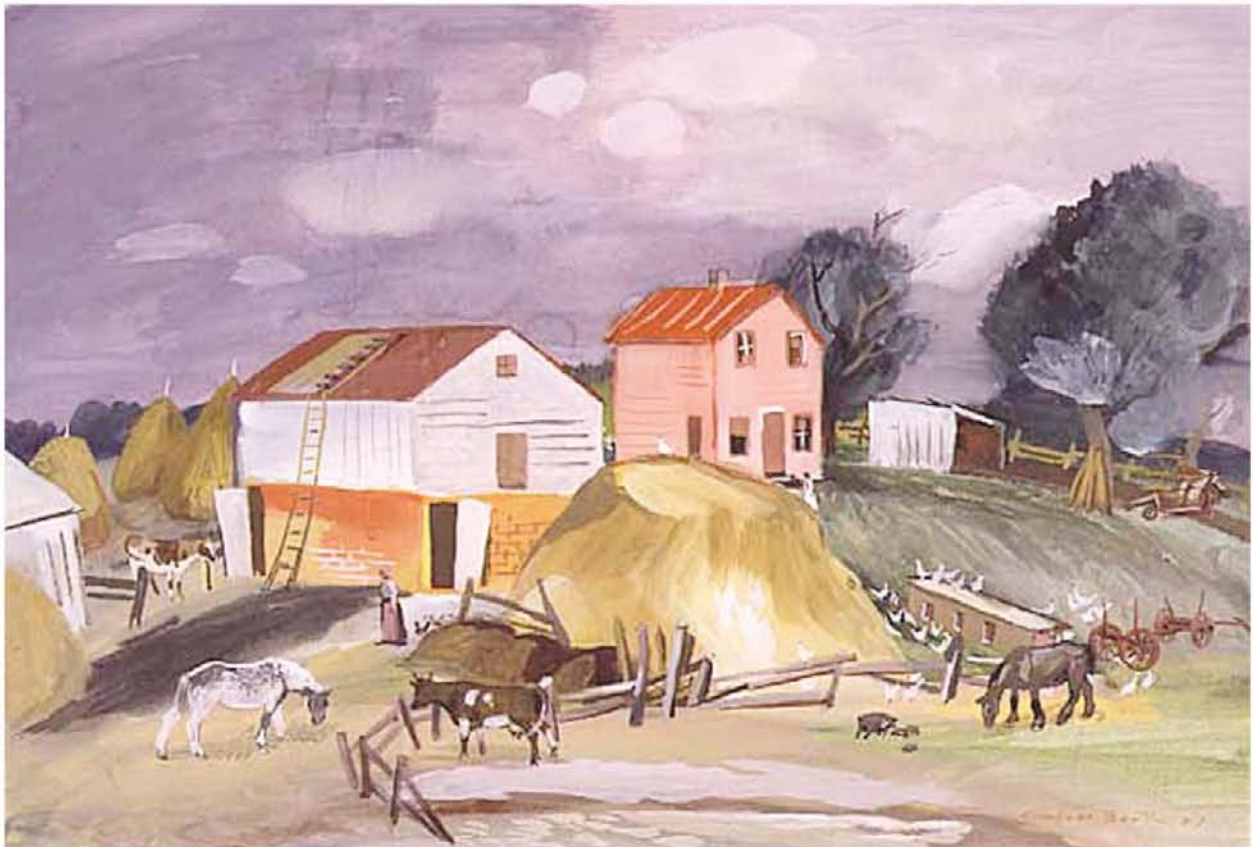


# HISTORIC CONTEXT STUDY OF MINNESOTA FARMS, 1820-1960

Vol 1



---

prepared for the  
**Minnesota Dept of Transportation**

Susan Granger and Scott Kelly  
Gemini Research June 2005

# TABLE OF CONTENTS

## Volume 1

<b>INTRODUCTION</b> . . . . .	<b>1.1</b>
<b>OBJECTIVES AND METHODS</b> . . . . .	<b>2.1</b>
<b>DEVELOPMENTAL PERIODS</b> . . . . .	<b>3.1</b>
Period 1: Early Settlement, 1820-1870 . . . . .	3.3
Period 2: Development of a Wheat Monoculture, 1860-1885 . . . . .	3.15
Period 3: Diversification and the Rise of Dairying, 1875-1900 . . . . .	3.27
Period 4: Industrialization and Prosperity, 1900-1920 . . . . .	3.43
Period 5: Developing the Cutover, 1900-1940 . . . . .	3.61
Period 6: Development of Livestock Industries, 1900-1940 . . . . .	3.77
Period 7: Depression and the Interwar Period, 1920-1940 . . . . .	3.89
Period 8: World War II and the Postwar Period, 1940-1960 . . . . .	3.105
<b>SNAPSHOT OF FARMING REGIONS IN 1940</b> . . . . .	<b>4.1</b>
<b>PLANNING AND BUILDING FARM STRUCTURES</b> . . . . .	<b>5.1</b>
Design Considerations . . . . .	5.1
Designers and Builders . . . . .	5.17
Building Materials . . . . .	5.35
Barn Forms and Terminology . . . . .	5.63
<b>INDIVIDUAL FARM ELEMENTS</b> . . . . .	<b>6.1</b>
Acetylene or Carbide Gas Structures . . . . .	6.5
Airplane Hangars . . . . .	6.9
Animal Underpasses . . . . .	6.13
Beef Barns . . . . .	6.17
Boundary Markers . . . . .	6.29
Brooder Houses . . . . .	6.33
Bull Barns . . . . .	6.41
Cattle Guards . . . . .	6.45
Cesspools and Septic Tanks . . . . .	6.47
Cisterns . . . . .	6.51
Combination Buildings . . . . .	6.57
Corncribs . . . . .	6.61

## Volume 2

<b>INDIVIDUAL FARM ELEMENTS, CONTINUED</b>	
Dairy Barns . . . . .	6.81
Drainage Structures . . . . .	6.119
Erosion Control Structures . . . . .	6.129
Farm Shops . . . . .	6.137
Farmhouses . . . . .	6.143
Farms . . . . .	6.165
Farmsteads . . . . .	6.175
Farmyards . . . . .	6.187
Fences . . . . .	6.191
Field Rock Piles . . . . .	6.203
Fields and Pastures . . . . .	6.207
Garages . . . . .	6.215
Gardens (Vegetable) . . . . .	6.219
General Purpose or Combination Barns . . . . .	6.223
Granaries, Elevators, Bins, Dryers . . . . .	6.233
Greenhouses, Hotbeds, Coldframes . . . . .	6.251
Hay Barns or Sheds . . . . .	6.255
Hired Workers' Housing . . . . .	6.265
Hog Barns and Hog Cots . . . . .	6.275
Horse Barns . . . . .	6.293
Housebarns . . . . .	6.299
Icehouses . . . . .	6.301
Implement or Machine Sheds . . . . .	6.307
Irrigation Structures . . . . .	6.315
Landscaping and Ornamental Plantings . . . . .	6.319
Manure Pits or Bunkers . . . . .	6.325
Milk Houses . . . . .	6.329
Milking Barns . . . . .	6.339
Orchards . . . . .	6.345
Other Animal Husbandry Elements . . . . .	6.351

Other Crop Husbandry Elements . . . . .	6.353	Pumps and Pump Houses . . . . .	6.399
Other Domestic Elements . . . . .	6.355	Roads, Lanes, Tracks, Sidewalks . . . . .	6.405
Other Service and Utility Elements . . . . .	6.357	Roadside Markets . . . . .	6.415
Potato Warehouses . . . . .	6.359	Root Cellars . . . . .	6.419
Poultry Houses . . . . .	6.365	Saunas . . . . .	6.427
Power Houses . . . . .	6.387	Scale Houses . . . . .	6.431
Privies . . . . .	6.393	Sheep Barns . . . . .	6.433
Propane Gas Structures . . . . .	6.397	Shelterbelts . . . . .	6.441

## Volume 3

### INDIVIDUAL FARM ELEMENTS, CONTINUED

Silos . . . . .	6.445	Utility Poles and Equipment . . . . .	6.503
Smokehouses . . . . .	6.465	Water Power Structures . . . . .	6.509
Springhouses and Springboxes . . . . .	6.469	Water Tanks and Tank Houses . . . . .	6.513
Stock Tanks . . . . .	6.473	Wells . . . . .	6.517
Stockyards . . . . .	6.477	Wetlands . . . . .	6.525
Sugarhouses . . . . .	6.485	Windbreaks . . . . .	6.529
Summer Kitchens . . . . .	6.489	Windmills . . . . .	6.533
Threshing Barns . . . . .	6.493	Woodlots . . . . .	6.541
Tobacco Barns . . . . .	6.499	Woodsheds . . . . .	6.545

### EVALUATION OF NATIONAL REGISTER ELIGIBILITY . . . . . 7.1

<b>APPENDIX A.</b>	Focus on Government Land Programs . . . . .	8.1
<b>APPENDIX B.</b>	Focus on Minnesota Crops . . . . .	9.1
<b>APPENDIX C.</b>	Focus on Minnesota Livestock . . . . .	10.1
<b>APPENDIX D.</b>	Focus on Mechanical Technology . . . . .	11.1
<b>APPENDIX E.</b>	Focus on Biotechnology and Agrichemicals . . . . .	12.1
<b>APPENDIX F.</b>	Focus on Farm Electrification . . . . .	13.1
<b>APPENDIX G.</b>	Focus on Farm Journalism . . . . .	14.1
<b>APPENDIX H.</b>	Focus on University of Minnesota Programs . . . . .	15.1
<b>APPENDIX I.</b>	Focus on the USDA and the Minnesota Department of Agriculture . . . . .	16.1
<b>APPENDIX J.</b>	Focus on Farmers' Organizations . . . . .	17.1
<b>APPENDIX K.</b>	Original Research Design . . . . .	18.1
<b>APPENDIX L.</b>	Bibliography for Further Research . . . . .	19.1

## Volume 4

### HISTORICAL ARCHAEOLOGY OF MINNESOTA FARMSTEADS