

Plotting Layouts to PDF from InterPlot Organizer

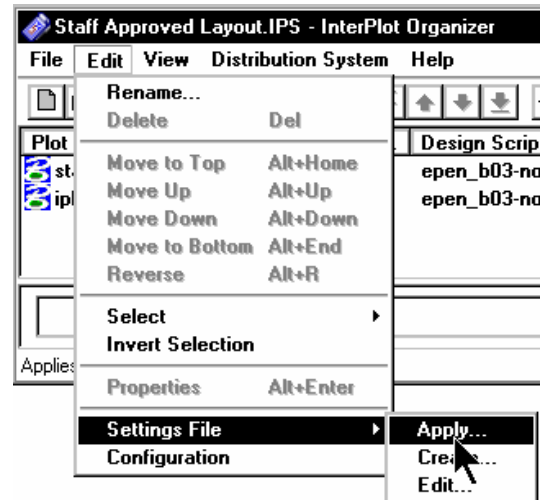
It's possible to push a 36-inch wide by 200 inch long (or longer) "plot" to a PDF file using InterPlot Organizer. This tip sheet covers the process after the initial plot has been created in the InterPlot Organizer. There are two basic steps needed to create the PDF:

1. Associating an appropriate InterPlot settings file (.SET) with your plot file
2. Create the PDF from the InterPlot Organizer file menu using File > Export to PDF.

Seed InterPlot settings files can be found on your standards server at *S:\MndotV8stds\DOT_IPLOT\settings*. If this not the case, check with your CAD Administrator. The seed settings files contain information about a plotting queue, color table, pen table, display settings and paper size. There are two files, either of which you can use *PDFLayoutAscii.set* and *PDFLayoutBinary.set*. Both contain the same information. *PDFLayoutascii.set* can be edited with a text editor. *PDFLayoutBinary.set* must be edited in InterPlot Organizer with the "Edit > Settings File > Edit... tool". If you intend to edit either one, make a local copy first. They should run from any location if your S: drive is mapped to your standards server.

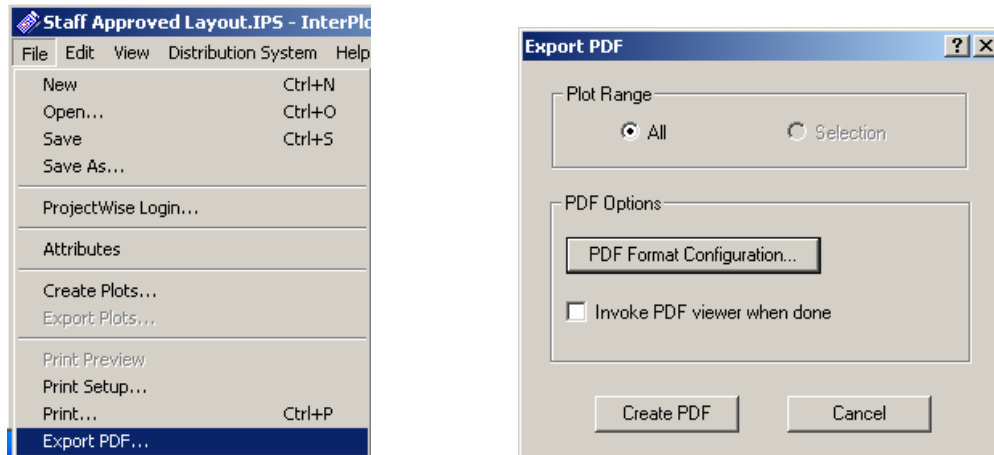
Step 1: Associating the .SET file with the Plot Name

1. Open the InterPlot Organizer for your project.
2. Highlight the plot(s) to push to PDF. Multiple selections are supported, as they created as separate pages in a single PDF file.
3. From the InterPlot Organizer pull down menus, select **Edit > Settings File > Apply**. The "Select a Settings File" dialog opens. Navigate to: "PDFLayoutBinary.set"
4. Click **Open**.
5. A message is displayed that the Settings file contains a common section and will modify attributes of the plot. Click **Yes** to apply the changes.



Step 2: Initiating the PDF file Creation

1. You may adjust individual plot properties if necessary (scale, rotation, etc.) prior to plotting.
2. Select **File > Export to PDF** from the IPS menu, which opens the Export PDF dialog.



3. Three options are supported:
 - Plot Range lets you expand your selection to All plots. Recommended setting is to leave at “Selection” when you have picked files to print as PDF prior to picking command.
 - PDF Format Configuration lets you change resolution, add extended data or embed links and adjust document security on the PDF file. Recommend leaving at default settings unless you have verified specific problems with document clarity.
 - Invoke PDF Viewer when done automatically opens the newly created PDF in Adobe Reader so you can view/check it. Recommend leaving this in default (Off) when plotting multiple plots or plotting later versions of same. Clicking it on will add some time for processing each plot.
4. Click **Create PDF**. When prompted for where to create the file, navigate to the appropriate directory and click **OK**.

As PDF creation begins, you can watch the “Creating File:” status bar at the bottom of the InterPlot Organizer dialog. In general most PDF’s will generate in two minutes or less. However, larger plots require more time, so be patient. Give it time.