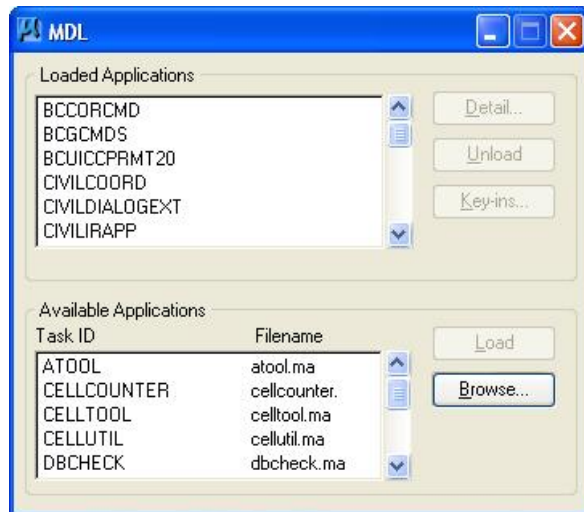


Paving Reports and Pavement Shape TINs

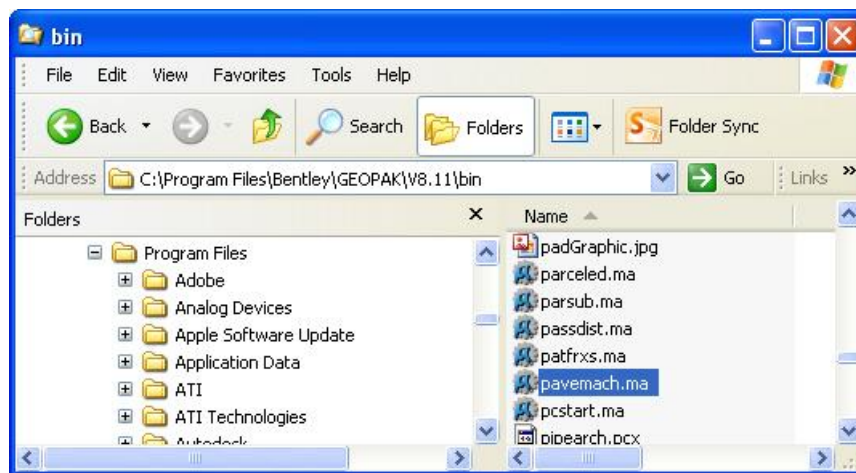


Creating a Paving Report using *pavemach.ma*

1. Open **dqfront_sh.dgn** (pavement shape file).
2. Select **Utilities > MDL Applications > Browse > C:\Program Files\Bentley\GEOPAK\V8.11\bin**

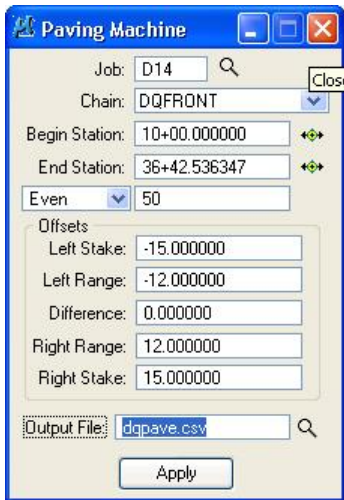


3. Select **pavemach.ma** from the MicroStation menu.



4. In the Paving Machine dialog fill us the following settings:
5. Navigate and select **d14** for the Job.
6. Select the Chain **dqfront**.
7. Key-in Begin Station of **27+00**. Key-in End Station of **36+00**.
8. Select **Even**.Key-in **50** for Even.
9. Key-in **-15** for the Left Stake. Key-in **-12** for the Left Range.
10. Key-in **0** for the Difference.
11. Key-in **12** for the Right Range. Key-in **15** for the Right Stake.

12. Key-in **dqpave.csv** for the filename.



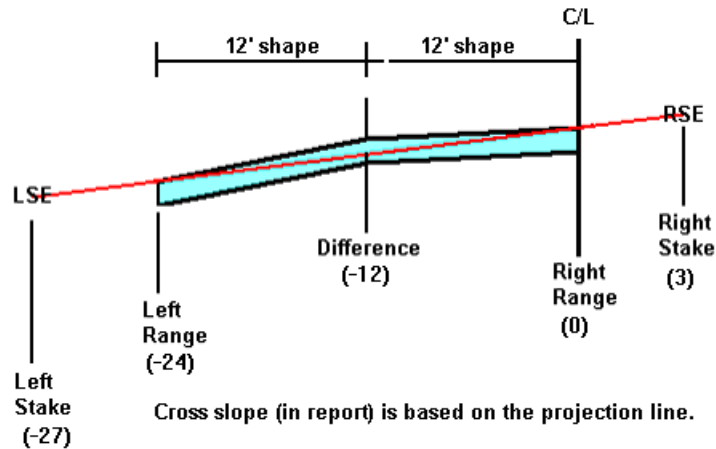
16. Select **Apply**.

17. Open **dqpave.csv** and review results.

Warning: If you get an elevation = 999999 it means that you are not on the pavement shape in the settings in the Paving Machine dialog.

18. Close Paving Machine and MDL dialogs.

Hint: The elevation at the range points are computed via the superelevation shapes. The optional difference is then applied. The elevations of the stakes are determined by projecting a line through the range points and extending the projection to the right and left stake. The diagram below illustrates the values and elevations. Note both offsets and ranges may be to the right or left of the baseline, it is not necessary to straddle it.



In this example the offset are in (*) also we are using a 3 foot offset from the stake to the edge of the pavement.