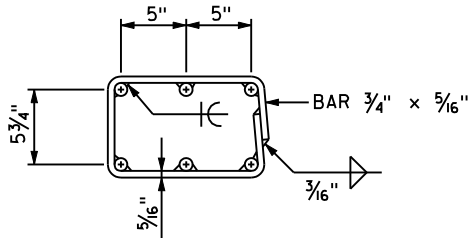


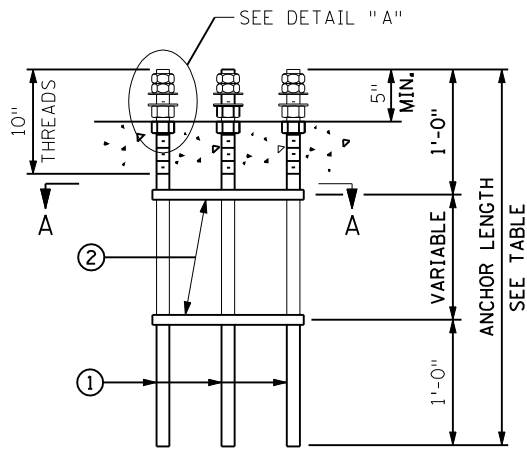
SECTION A-A

ALTERNATE MECHANICAL CAGE

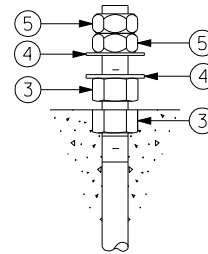


SECTION A-A

ALTERNATE WELDED CAGE



ELEVATION



DETAIL "A"

NOTES:

ALL RODS ARE TO BE 1" NOMINAL DIA. WITH 1 - 8UNC - 2A THREADS. HEAVY HEX NUTS, JAM NUTS, AND FLAT WASHERS PER Mn/DOT SPEC. 3391.2A FOR 1" DIA. THREADED RODS. NUTS TO BE TAPPED 1/64" OVERSIZED PRIOR TO GALVANIZING, AND RETAPPED TO STANDARD SIZE AFTER GALVANIZING.

GALVANIZE THREADED RODS, CAGES, AND NUTS AFTER FABRICATION AS PER Mn/DOT SPEC. 3392.

TOP OF THE LOWER NUTS SHALL BE FLUSH WITH TOP OF CONCRETE RAILING.

SUBSTITUTE MATERIALS PER Mn/DOT SPEC. 1605.

- ① THREADED RODS, STEEL AS PER Mn/DOT SPEC. 3309, 3310, OR 3385 TYPE B (6 REQUIRED).
- ② PROVIDE A MECHANICAL OR WELDED CAGE FOR ROD ALIGNMENT. STEEL AS PER Mn/DOT SPEC. 3306 (2 REQUIRED).
- ③ HEAVY HEX NUTS FOR 1" DIA. RODS (12 REQUIRED).
- ④ FLAT WASHERS FOR 1" DIA. RODS (12 REQUIRED).
- ⑤ JAM NUTS FOR 1" DIA. RODS (12 REQUIRED).

| STANDARD RAIL TYPES (SEE PLANS FOR TYPE) | ANCHOR LENGTH |
|--|---------------|
| TYPE "F" MEDIAN | 3'-0" |
| TYPE "F" W/O CONCRETE WEARING COURSE | 3'-0" |
| TYPE "F" W/ CONCRETE WEARING COURSE | 3'-2" |
| TYPE "F" WITH SIDEWALK/ BRIDGE SLAB | 3'-10" |
| TYPE "F" ON RETAINING WALL | 3'-0" |
| CONCRETE PARAPET WITH FENCE | 2'-8" |
| | |
| | |
| | |

APPROVED: NOVEMBER 22, 2002

STATE OF MINNESOTA
DEPARTMENT OF TRANSPORTATION

REVISED
10-26-2004
03-02-2005

DETAIL NO.

ANCHOR BOLT CLUSTER FOR LIGHT POLES

B950

Daniel J. Waseyan
STATE BRIDGE ENGINEER