



Office of Technical Support  
Estimating Unit  
Mail Stop 692  
395 John Ireland Boulevard  
St. Paul, MN 55155

Office Tel:(651) 296-0807  
Fax:(651) 296-0804

January 25, 2006

To: Addressees

From: Nancy Sannes  
Estimates Engineer

Subject: Cost Index – 2005 Fourth Quarter / Year-End

The Minnesota Highway Construction Composite Cost Index for the fourth quarter of 2005 is 193.94. The fourth quarter index was based on \$7.7 million of work considered from 7 projects. The quarterly costs shown by indicator item are as follows:

**Fourth Quarter 2005 Indicator Costs**

<b>Item</b>	<b>Quantity</b>	<b>Cost</b>	<b>Unit Cost</b>
<b>Excavation</b>	1,022,020 CY	\$2,703,364.89	\$2.65/CY
<b>Reinforcing Steel</b>	365,290 lb	\$351,325.20	\$0.96/lb
<b>Structural Steel</b>	0 lb	\$0.00	\$0.00/lb
<b>Structural Concrete</b>	2,661 CY	\$1,067,382.85	\$401.12/CY
<b>Concrete Pavement</b>	0 CY	\$0.00	\$0.00/CY
<b>Plant-Mixed Bituminous</b>	99,169 ton	\$3,622,550.50	\$36.53/ton
<b>Total</b>		<b>\$7,744,623.44</b>	

The Composite Cost Index for the fourth quarter of 2005 is up 38.41 from the fourth quarter 2004. Project information from the fourth quarter of 2005 is compared to the fourth quarter of 2004 below.

## Minnesota Highway Construction Project Summary

	2004 Q4	2005 Q4
<b>Number of Projects Awarded</b>	30 <sup>1</sup>	13 <sup>2</sup>
<b>Awarded Amount (\$ million)</b>	\$63.5 <sup>1</sup>	\$57.5 <sup>2</sup>
<b>Total Number of Bidders</b>	139 <sup>1</sup>	68 <sup>2</sup>
<b>Average No. of Bidders</b>	4.6 <sup>1</sup>	5.2 <sup>2</sup>
<b>Number of Cost Index Projects</b>	17	7
<b>Cost Index Amount (\$ million)</b>	\$26.1	\$7.7
<b>Excavation Index</b>	171.37	131.93
<b>Structures Index</b>	160.98	199.22
<b>Surfacing Index</b>	148.28	211.41
<b>Composite Cost Index (CI)</b>	155.53	193.94

<sup>1</sup> Includes S.P. 1401-150 Design Build, award amount \$8.6 million.

<sup>2</sup> Includes S.P. 5508-84 Design Build, award amount \$36.8 million.

The average number of bidders per project was 5.4 for the fourth quarter of 2005. In comparison, the average number of fourth quarter bidders in 2004 and 2003 were 4.6 and 4.7 respectively.

The following tables summarize the quarterly and year-end project information and indices for 2005.

### 2005 Minnesota Highway Construction Project Summary

	Q1	Q2	Q3	Q4	Year 2005
<b>No. of Projects Awarded</b>	63 <sup>1</sup>	82	31	13 <sup>2</sup>	189 <sup>1,2</sup>
<b>Awarded Amount (\$ million)</b>	\$346.0 <sup>1</sup>	\$176.1	\$148.1	\$57.5 <sup>2</sup>	\$727.7 <sup>1,2</sup>
<b>Total No. of Bidders</b>	286 <sup>1</sup>	285	109	68 <sup>2</sup>	748 <sup>1,2</sup>
<b>Average No. of Bidders</b>	4.5 <sup>1</sup>	3.5	3.5	5.2 <sup>2</sup>	4.0 <sup>1,2</sup>
<b>No. of CI Projects</b>	34	32	7	7	80
<b>CI Amount (\$ million)</b>	\$46.9	\$66.5	\$71.5	\$7.7	\$192.6
<b>Excavation Index</b>	91.95	152.75	135.85	131.93	130.43
<b>Structures Index</b>	201.24	176.24	172.91	199.22	177.39
<b>Surfacing Index</b>	172.12	177.31	206.06	211.41	172.53
<b>Composite Cost Index</b>	169.57	173.44	185.71	193.94	167.97

<sup>1</sup> Includes S.P. 1017-12 Design Build, award amount \$238.1 million.

<sup>2</sup> Includes S.P. 5508-84 Design Build, award amount \$36.8 million.

The Composite Cost Index for the year 2005 is 167.97 up 18.36 from 2004. The following table shows the dollar amount (millions) of work considered in the Composite Cost Index for each of the indicator items and a comparison of the unit cost reported for the years 2004 and 2005.

## 2004/2005 Indicator Costs

Item	Year 2004			Year 2005		
	Quantity	Cost *	Unit Cost	Quantity	Cost *	Unit Cost
Excavation	10,852,755 CY	\$22.5	\$2.07/CY	10,859,232 CY	\$28.4	\$2.61/CY
Reinforcing Steel	5,440,869 lb	\$4.6	\$0.84/lb	10,020,611 lb	\$8.9	\$0.89/lb
Structural Steel	1,747,679 lb	\$2.0	\$1.16/lb	18,338,424 lb	\$26.2	\$1.43/lb
Structural Concrete	45,110 CY	\$14.1	\$312.19/CY	67,559 CY	\$22.9	\$338.76/CY
Concrete Pavement	334,894 CY	\$26.4	\$78.69/CY	190,493 CY	\$19.5	\$102.34/CY
Plant-Mixed Bituminous	2,667,763 ton	\$73.5	\$27.53/ton	2,960,014 ton	\$86.8	\$29.32/ton
<b>Total</b>		<b>\$143.0</b>			<b>\$192.6</b>	

\* millions of dollars

The following table compares the year 2004 and 2005 project information and indices.

### 2004/2005 Minnesota Highway Construction Project Information Comparison

	Year 2004	Year 2005
No. of Projects Awarded	202 <sup>1,2</sup>	189 <sup>3,4</sup>
Awarded Amount (\$ million)	\$489.7 <sup>1,2</sup>	\$727.7 <sup>3,4</sup>
Total No. of Bidders	825 <sup>1,2</sup>	748 <sup>3,4</sup>
Average No. of Bidders	4.1 <sup>1,2</sup>	4.0 <sup>3,4</sup>
No. of CI Projects	95	80
CI Amount (\$ million)	\$143.0	\$192.6
Excavation Index	103.48	130.43
Structures Index	160.5	177.39
Surfacing Index	155.6	172.53
Composite Cost Index	149.61	167.97

<sup>1</sup> Includes S.P. 1401-150 Design Build, award amount \$8.6 million.

<sup>2</sup> Includes S.P. 2785-304 Design Build, award amount \$135.6 million.

<sup>3</sup> Includes S.P. 1017-12 Design Build, award amount \$238.1 million.

<sup>4</sup> Includes S.P. 5508-84 Design Build, award amount \$36.8 million.

The average number of bidders per project for the year 2005 was 4.0. In comparison, the average number of bidders in 2004 and 2003 were 4.1 and 4.3 respectively.

Attached is an explanation of the derivation of the Minnesota Cost index, charts of quarterly and annual Minnesota highway construction cost trends and a table and chart comparing the yearly Minnesota Composite Cost Index with the latest yearly FHWA index.

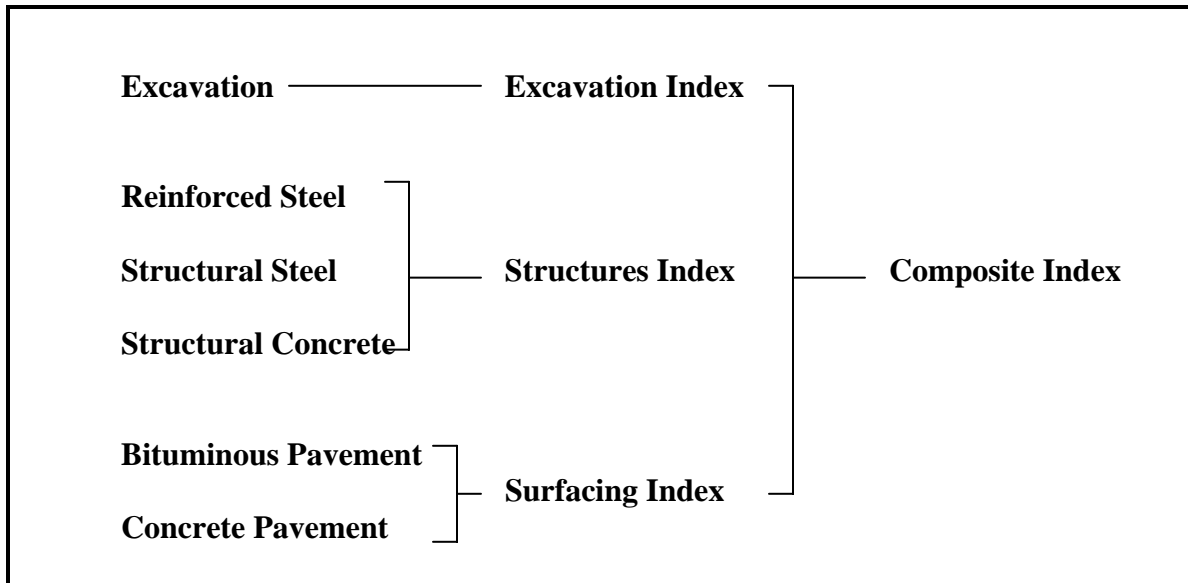
Attachments

Cc: File

# Minnesota Construction Cost Index

The Minnesota Construction Cost Index is an indicator of price trends for highway construction.

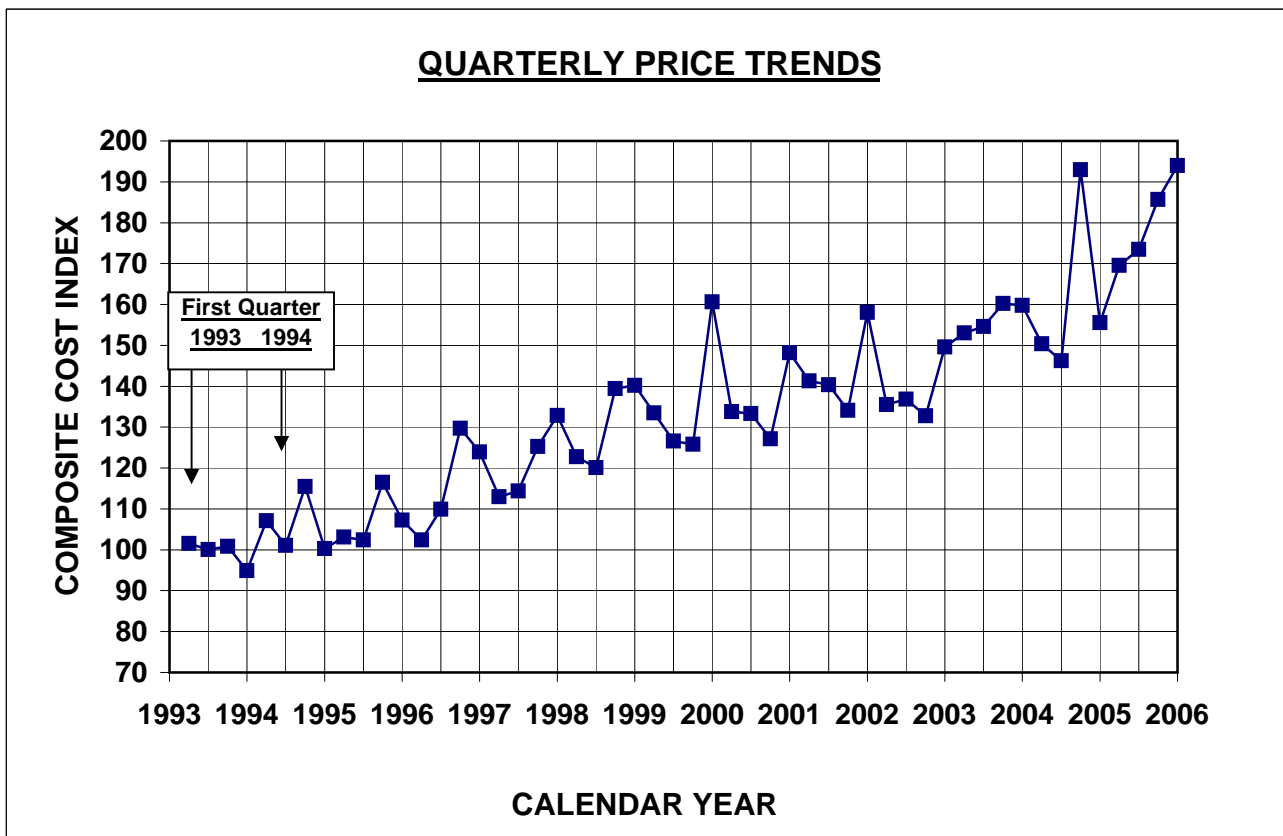
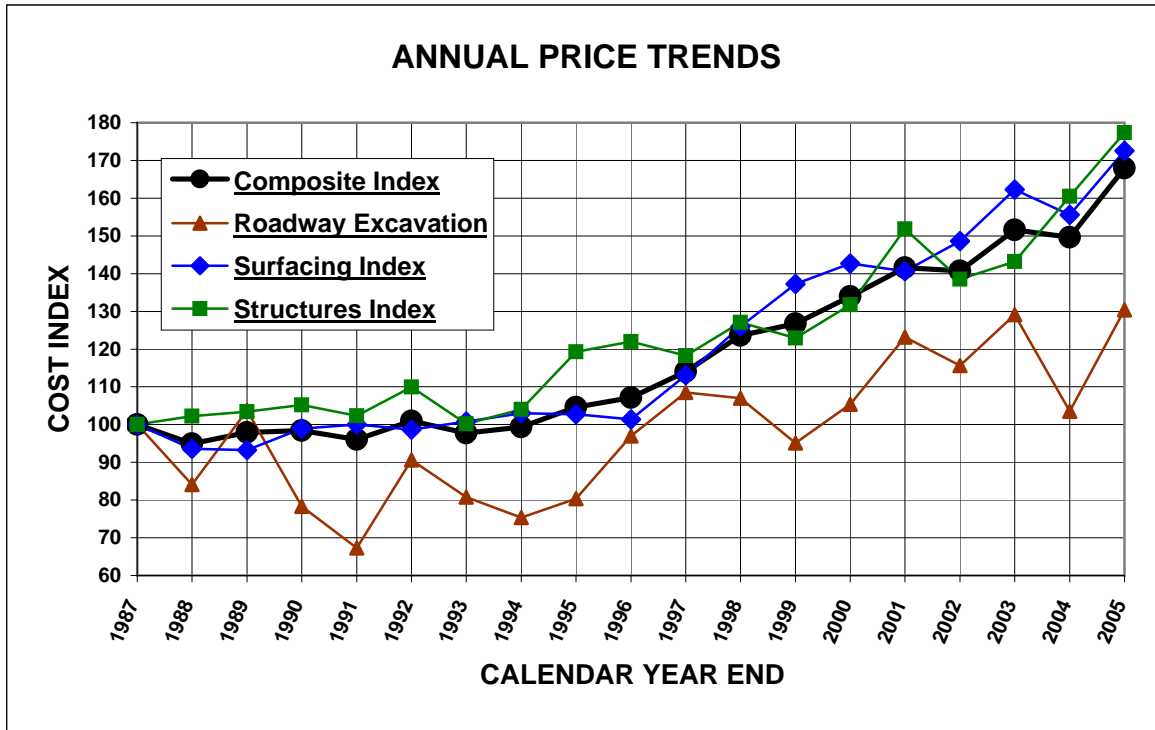
It is composed of six indicator items: roadway excavation, to indicate the price trends for all roadway excavation; concrete pavement and plant-mixed bituminous, to indicate the price trend for all surfacing types; and reinforcing steel, structural steel, and structural concrete, to indicate the price trend for structures.



Each quarter, an average unit price is computed for each indicator item. The unit price is based upon the actual bids from projects **excluding Design Build projects**, costing more than \$100,000, and let during that quarter. These unit prices include the cost of material, labor, equipment, overhead and profit.

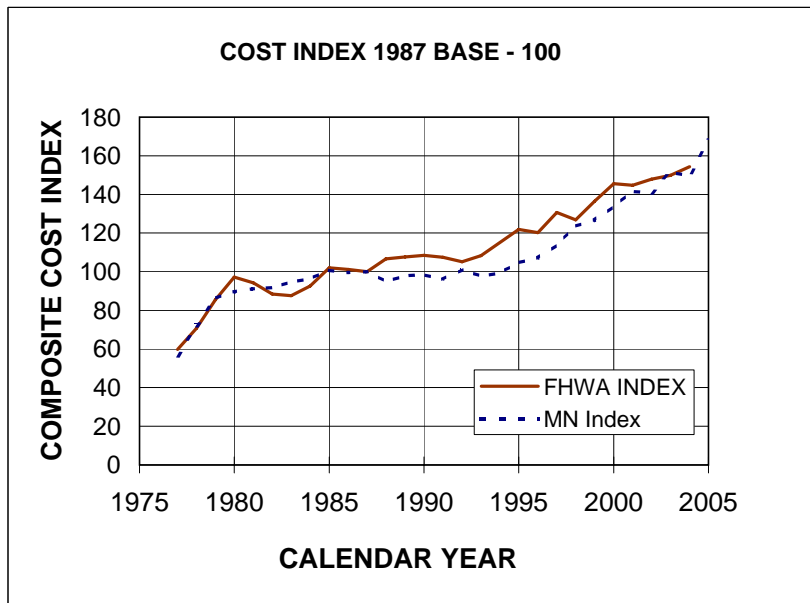
These unit prices along with the 1987 base unit prices are used to compute the Construction Cost Index. Additionally, the 1987 quantities are used to combine these indices as shown above into an excavation index, a surfacing index, a structures index and a composite index.

# Minnesota Highway Construction Cost Trends



**HIGHWAY CONSTRUCTION COST INDEX 1987 BASE-100**

<u>Year</u>	<u>FHWA Index</u>	<u>MN Index</u>
1975		
1976		
1977	59.80	56.40
1978	70.70	72.10
1979	85.50	86.30
1980	97.20	89.60
1981	94.20	91.20
1982	88.50	91.80
1983	87.60	94.80
1984	92.60	96.40
1985	102.00	100.70
1986	101.10	99.60
1987	100.00	100.00
1988	106.60	94.90
1989	107.70	97.90
1990	108.50	98.40
1991	107.50	96.00
1992	105.10	101.00
1993	108.30	97.70
1994	115.10	99.30
1995	121.90	104.60
1996	120.20	107.10
1997	130.60	114.00
1998	126.90	123.58
1999	136.50	126.75
2000	145.60	133.91
2001	144.80	141.61
2002	147.90	140.73
2003	149.80	151.60
2004	154.40	149.61
2005		167.97



1987 Base Year = 100  
 FHWA Index includes projects > \$500,000  
 Mn/DOT Index includes projects > \$100,000

## PRICE TRENDS FOR FEDERAL-AID HIGHWAY CONSTRUCTION

1987 Base

Year	Common excavation		Surfacing					Structures							Composite index
	Average contract price (cu. yd.)	Index	Portland cement concrete <sup>2</sup>		Bituminous concrete		Surfacing index	Reinforcing steel		Structural steel		Structural concrete		Structures index	
			Average contract price (sq. yd.)	Index	Average contract price (ton)	Index		Average contract price (lb.)	Index	Average contract price (lb.)	Index	Average contract price (cu. yd.)	Index		
1972	.72	29.7	6.42	43.6	9.23	37.5	39.5	.181	41.1	.342	38.6	100.17	41.6	40.7	38.6
1973	.80	33.0	7.00	47.5	10.02	40.7	42.9	.207	47.0	.372	42.0	111.81	46.4	45.4	42.5
1974	1.00	41.2	8.88	60.3	14.74	59.8	60.0	.339	76.9	.551	62.3	136.80	56.8	61.7	57.9
1975	1.03	42.5	8.88	60.3	15.13	61.4	61.0	.297	67.4	.554	62.6	138.76	57.6	60.6	58.1
1976	1.03	42.5	8.92	60.6	14.83	60.2	60.3	.258	58.5	.484	54.7	139.59	58.0	57.2	56.3
1977	1.16	47.8	9.95	67.5	15.47	62.8	64.3	.272	61.7	.520	58.8	143.51	59.6	59.7	59.8
1978	1.54	63.5	11.90	80.8	17.16	69.6	73.3	.316	71.7	.603	68.1	172.41	71.6	70.7	70.7
1979	1.62	66.8	14.02	95.2	21.21	86.1	89.0	.421	95.5	.759	85.8	211.33	87.8	88.6	85.5
1980	1.83	75.5	14.92	101.3	25.29	102.6	102.2	.483	109.6	.941	106.3	226.68	94.1	100.0	97.2
1981	1.76	72.6	14.17	96.2	25.63	104.0	101.4	.438	99.4	.790	89.3	231.64	96.2	94.9	94.2
1982	1.59	65.6	13.03	88.5	24.33	98.7	95.3	.407	92.4	.762	86.1	219.63	91.2	90.0	88.5
1983	1.74	71.8	12.69	86.1	24.27	98.5	94.4	.398	90.3	.708	80.0	213.85	88.8	86.7	87.6
1984	1.90	78.4	13.64	92.6	26.52	107.6	102.7	.409	92.8	.709	80.1	218.02	90.5	88.2	92.6
1985	2.24	92.4	14.31	97.1	28.52	115.7	109.6	.444	100.7	.796	89.9	243.60	101.2	98.1	102.0
1986	2.28	94.0	15.63	106.1	26.48	107.4	107.0	.442	100.3	.850	96.0	236.37	98.2	98.0	101.1
1987	2.42	100.0	14.80	100.0	24.65	100.0	100.0	.441	100.0	.885	100.0	240.81	100.0	100.0	100.0
1988	2.72	112.2	14.33	97.3	24.91	101.1	99.8	.494	112.1	.924	104.4	274.12	113.8	111.0	106.6
1989	2.40	99.0	15.17	103.0	24.08	97.7	99.4	.556	126.2	1.018	115.0	283.40	117.7	118.4	107.7
1990	2.38	98.1	15.91	108.0	24.52	99.5	102.3	.529	120.0	1.010	114.1	286.18	118.8	117.8	108.5
1991	2.32	95.5	16.58	112.5	25.52	103.6	106.5	.505	114.6	1.030	116.4	264.98	110.0	112.5	107.5
1992	2.20	90.8	17.80	120.8	24.66	100.1	106.9	.520	117.9	.916	103.5	259.61	107.8	108.4	105.1
1993	2.50	103.2	18.81	127.7	26.26	106.6	113.5	.467	106.0	.861	97.3	261.89	108.7	105.3	108.3
1994	2.75	113.2	20.88	141.7	27.80	112.8	122.3	.515	116.8	.847	95.7	271.94	112.9	109.0	115.1
1995	2.73	112.8	22.07	149.8	28.87	117.1	127.9	.542	122.9	.922	104.2	302.66	125.7	119.5	121.9
1996	2.92	120.6	19.64	133.3	27.50	111.6	118.7	.581	121.5	1.068	120.7	293.85	122.0	121.6	120.2
1997	2.85	117.6	23.75	161.2	23.39	119.2	133.0	.567	128.7	1.186	134.0	320.90	133.2	132.7	130.6
1998	3.01	124.3	23.65	160.5	25.00	101.4	120.8	.544	123.4	1.111	125.5	337.25	140.0	133.4	126.9
1999	2.93	120.9	23.49	159.5	32.28	130.9	140.3	.554	125.7	1.224	138.3	342.24	142.1	138.3	136.5
2000	3.01	124.1	25.30	171.7	35.15	142.6	152.2	.549	124.6	1.351	152.6	363.66	151.0	146.9	145.6
2001	3.05	125.9	28.21	191.5	34.93	141.7	158.1	.601	136.4	1.201	135.8	339.44	140.9	138.8	144.8
2002:															
First quarter	3.05	125.7	24.26	164.7	31.00	125.8	138.5	.618	140.2	1.628	183.9	395.18	164.1	165.2	148.4
Second quarter	2.94	121.3	32.31	219.3	35.52	144.1	168.8	.631	143.2	1.427	161.2	393.88	163.6	159.5	157.5
Third quarter	3.05	125.6	23.66	160.6	36.16	146.7	151.3	.583	132.3	1.433	161.9	377.90	156.9	154.0	148.6
Fourth quarter	2.67	109.9	28.31	192.2	33.33	135.2	153.9	.620	140.8	.972	109.8	336.13	139.6	131.9	137.6
Annual	2.94	121.2	25.86	175.5	34.14	138.5	150.7	.610	138.4	1.436	162.2	374.96	155.7	154.5	147.9
2003:															
First quarter	5.15	212.2	23.55	159.8	32.35	131.3	140.6	0.647	146.7	1.177	133.0	441.81	183.5	163.8	161.6
Second quarter	3.23	133.1	24.33	165.1	33.86	137.4	146.5	.833	188.9	1.272	143.7	425.42	176.6	170.0	154.8
Third quarter	4.09	168.6	29.07	197.3	31.92	129.5	151.8	.631	143.1	1.102	124.6	374.83	155.6	145.3	151.4
Fourth quarter	2.67	110.0	21.14	143.5	31.57	128.1	133.1	.667	151.3	1.241	140.2	383.96	159.4	152.9	138.4
Annual	3.45	142.3	23.95	162.6	32.54	132.0	142.1	.718	162.9	1.219	137.8	406.02	158.5	159.5	149.8
2004:															
First quarter	2.97	122.4	25.78	174.9	33.61	136.4	149.0	.677	153.5	1.140	128.8	370.83	153.9	147.2	144.3
Second quarter	3.32	136.9	30.60	207.7	35.54	144.2	165.0	.786	178.3	2.455	277.4	402.69	167.2	198.2	175.4
Third quarter	3.33	137.5	23.39	158.8	38.14	154.7	156.1	.828	187.9	1.135	128.2	253.35	105.2	125.4	139.8
Fourth quarter	3.58	147.6	29.69	201.6	40.60	164.7	176.8	.941	213.4	1.419	160.4	365.14	151.6	164.5	166.9
Annual	3.29	135.7	26.97	183.1	36.97	149.9	160.8	.815	184.8	1.521	171.9	331.49	137.6	154.7	154.4
2005:															
First quarter	3.59	147.9	31.49	213.8	39.77	161.3	178.6	1.057	239.8	1.492	168.6	222.72	92.5	137.8	155.9
Second quarter	4.26	175.8	42.67	289.6	43.40	176.1	213.4	1.000	226.8	1.645	185.9	549.70	228.3	216.8	209.2
Third quarter															
Fourth quarter															
Annual															

### MN/DOT COST INDEX

<u>Year</u>	<u>Roadway Excavation</u>	<u>Bituminous Surfacing</u>	<u>Concrete Surfacing</u>	<u>Surfacing Index</u>	<u>Reinforce. Steel</u>	<u>Structural Steel</u>	<u>Structural Concrete</u>	<u>Structures Index</u>	<u>Composite Index</u>
<b>1987</b>	100.00	100.00	100.00	100.00	100.00	100.00	100.00	100.00	100.00
<b>1988</b>									
1st Quarter	66.35	92.87	76.99	89.60	108.25	113.11	91.18	98.44	88.98
2nd Quarter	111.84	96.02	107.04	98.29	107.22	103.87	95.60	99.37	100.58
3rd Quarter	87.81	94.14	104.76	96.33	110.27	110.57	110.45	110.43	99.46
4th Quarter	89.72	103.63		103.63	115.44	107.04	94.37	100.80	100.39
Year End	84.08	95.68	85.55	93.59	109.73	109.34	97.90	102.26	94.90
<b>1989</b>									
1st Quarter	121.34	88.57	92.72	89.42	120.87	141.72	101.41	112.36	101.11
137.56	70.45	90.06	87.63	89.56	108.73	102.24	98.24	101.04	90.35
3rd Quarter	137.56	107.54	135.39	113.28	116.66	107.48	94.73	101.34	113.09
4th Quarter		91.13		91.13	138.53	121.78	146.33	140.47	111.64
Year End	103.72	92.01	94.50	93.23	115.99	111.15	97.29	103.45	97.90
<b>1990</b>									
1st Quarter	75.54	100.19	81.67	96.37	115.62	140.73	102.05	111.55	98.06
2nd Quarter	67.71	96.79	104.57	98.39	122.11	105.43	110.57	111.97	98.17
3rd Quarter	97.07	122.17	102.13	118.04	117.17	112.70	92.03	100.67	109.65
4th Quarter	66.99	106.72	148.85	115.41	118.55	108.99	133.76	126.38	111.83
Year End	78.30	100.58	97.24	98.89	117.48	112.81	99.09	105.17	98.41
<b>1991</b>									
1st Quarter	86.48	103.02	111.23	104.71	115.23	123.22	91.37	101.72	101.16
2nd Quarter	67.72	96.75	105.58	98.57	110.99	128.81	103.22	109.27	97.43
3rd Quarter	105.04				122.95		110.48	113.49	110.44
4th Quarter	47.98	81.65	111.81	87.87	106.38	84.44	80.29	86.22	81.62
Year End	67.31	97.72	109.11	100.07	111.54	121.31	93.98	102.28	96.04
<b>1992</b>									
1st Quarter	134.20	110.24	90.36	106.14	106.10	96.66	92.71	96.07	107.07
2nd Quarter	84.69	95.94	103.65	97.53	119.25	109.95	112.93	113.67	100.67
3rd Quarter	90.06	102.36	92.40	100.31	99.53	108.35	131.75	121.22	105.29
4th Quarter	99.54	105.41		105.41	105.69	91.58	116.35	109.83	106.01
Year End	90.60	99.05	97.07	98.64	106.37	105.54	112.38	109.98	100.98
<b>1993</b>									
1st Quarter	81.02	104.73	87.06	101.08	118.06	139.75	102.08	111.88	101.53
2nd Quarter	81.51	101.97	101.79	101.93	109.83	128.78	97.52	105.46	100.08
3rd Quarter		117.01		117.01	97.06		65.66	73.25	100.83
4th Quarter	73.97	94.47	84.12	92.33	119.80	112.58	104.90	109.22	94.91
Year End	80.75	101.91	96.30	100.75	108.13	127.30	90.07	100.21	97.70
<b>1994</b>									
1st Quarter	115.56	97.54	95.57	97.13	115.00	95.98	123.67	120.83	107.11
2nd Quarter	75.92	102.90	104.22	103.17	114.87		109.55	110.84	101.09
3rd Quarter	152.37	109.02	136.56	114.70	99.78	111.66	96.09	99.56	115.44
4th Quarter	65.52	110.42	103.89	109.08	109.23	98.51	98.97	100.93	100.29
Year End	75.38	102.48	104.96	102.99	105.52	110.88	101.55	103.98	99.32
<b>1995</b>									
1st Quarter	85.69	95.53	115.74	99.70	120.72	122.37	114.68	117.23	103.10
2nd Quarter	71.02	99.49		99.49	121.32	132.48	117.95	121.17	102.42
3rd Quarter	77.42	113.46	111.29	113.02	151.42		144.16	145.92	116.46
4th Quarter	92.70	107.55	109.43	107.93	121.52		111.82	114.16	107.29
Year End		99.81	113.94	102.73	121.47	126.83	116.53	119.32	104.63
<b>1996</b>									
1st Quarter	83.05	92.20	123.35	98.62	118.80	178.06	100.96	118.05	102.38
2nd Quarter	119.58	95.01	113.11	98.74	130.48		127.59	128.29	109.88
3rd Quarter	124.27	131.87	150.79	135.77	120.96		119.41	119.79	129.72
4th Quarter	95.12	124.66	113.40	122.34	141.02		144.36	143.55	123.91
Year End	97.01	97.12	117.89	101.40	120.85	178.06	106.59	121.98	107.13
<b>1997</b>									
1st Quarter	117.41	107.57	112.89	108.66	117.44	93.82	125.60	118.39	112.93
2nd Quarter	96.00	107.53	153.26	116.96	129.60	107.48	117.89	118.40	114.38
3rd Quarter	122.35	130.99		130.99	124.92	119.62	116.28	118.59	125.27
4th Quarter	127.75	134.59	0.00	134.59					132.88
Year End	108.51	109.84	125.63	113.10	122.08	99.44	122.32	118.25	114.03
<b>1998</b>									
1st Quarter	100.29	124.56	135.20	126.75	130.86		125.58	126.86	122.75
2nd Quarter	104.63	122.21	133.04	124.44	123.71		118.20	119.53	120.10
3rd Quarter	135.95	150.01	129.84	145.85	133.21		126.04	127.51	139.40
4th Quarter		155.16		155.16	122.66	146.08	110.58	119.22	140.22
Year End	106.99	124.06	132.22	125.95	127.70	146.08	121.58	127.10	123.58



**MN/DOT COST INDEX**  
(CONTINUED)

<u>Year</u>	<u>Roadway</u> <u>Excavation</u>	<u>Bituminous</u> <u>Surfacing</u>	<u>Concrete</u> <u>Surfacing</u>	<u>Surfacing</u> <u>Index</u>	<u>Reinforce.</u> <u>Steel</u>	<u>Structural</u> <u>Steel</u>	<u>Structural</u> <u>Concrete</u>	<u>Structures</u> <u>Index</u>	<u>Composite</u> <u>Index</u>
<b>1999</b>									
1st Quarter	90.59	130.95	210.30	147.31	133.64		126.39	128.14	133.51
2nd Quarter	92.34	137.50	139.09	137.83	121.34		121.92	121.78	126.58
3rd Quarter	85.22	135.66		135.66	125.58	168.87	121.78	130.81	125.78
4th Quarter	182.25	143.08	202.56	155.34	132.10	107.12	183.75	160.00	160.66
Year End	95.07	135.87	142.46	137.23	124.73	114.64	124.72	122.95	126.75
<b>2000</b>									
1st Quarter	96.35	141.29	153.08	143.73	142.36	151.96	125.61	133.57	133.77
2nd Quarter	111.93	138.88	158.17	142.86	137.49	136.03	120.21	126.43	133.33
3rd Quarter	102.18	128.03		128.03	137.29		140.48	139.71	127.13
4th Quarter	115.61	136.47	170.73	143.53	149.27		185.41	176.66	148.21
Year End	105.38	138.87	157.19	142.65	139.49	137.59	127.59	131.71	133.91
<b>2001</b>									
1st Quarter	91.27	131.58	133.42	131.96	166.65		196.86	189.55	141.28
2nd Quarter	116.05	135.28	149.20	138.15	135.53	219.62	144.03	155.60	140.36
3rd Quarter	109.17	130.04	154.51	135.09	140.67	166.76	138.68	144.01	134.11
4th Quarter	157.83	160.90	185.56	165.98	149.31	86.82	158.62	144.16	158.06
Year End	123.17	137.25	153.92	140.69	142.53	171.70	149.25	151.85	141.61
<b>2002</b>									
1st Quarter	123.44	147.14	119.78	141.50	151.68	143.03	120.19	130.48	135.49
2nd Quarter	148.48	149.69	140.07	147.71	150.31	165.23	85.03	112.13	136.82
3rd Quarter		132.77		132.77					132.77
4th Quarter	95.26	157.12	161.93	158.12	167.64	154.74	158.85	159.88	149.61
Year End	115.64	150.27	142.16	148.60	159.74	157.32	126.43	138.49	140.73
<b>2003</b>									
1st Quarter	119.16	168.38	149.65	164.51	165.32	124.83	149.85	148.55	153.05
2nd Quarter	149.11	166.29	171.88	167.44	168.38	109.25	130.53	134.34	154.57
3rd Quarter	126.34	162.12	190.96	168.07	166.04		161.37	162.50	160.21
4th Quarter	142.18	144.11		144.11	162.08	139.53	213.05	189.98	159.77
Year End	129.12	163.83	156.17	162.25	166.37	116.91	143.23	143.23	151.60
<b>2004</b>									
1st Quarter	89.34	157.99	145.67	155.45	184.40	166.06	166.16	169.78	150.36
2nd Quarter	101.93	156.99	153.21	156.21	193.40		135.92	149.83	146.23
3rd Quarter	156.87	173.66	220.06	183.23	231.70	126.15	253.80	226.99	192.95
4th Quarter	171.37	153.88	126.70	148.28	175.45	195.43	146.69	160.98	155.53
Year End	103.48	159.35	141.15	155.60	191.19	162.96	150.02	160.50	149.61
<b>2005</b>									
1st Quarter	91.95	159.35	221.30	172.12	206.72	281.37	176.99	201.24	169.57
2nd Quarter	152.75	163.52	230.40	177.31	206.89	201.87	159.27	176.24	173.44
3rd Quarter	135.85	214.40	173.97	206.06	195.34	199.90	158.17	172.91	185.71
4th Quarter	131.93	211.41		211.41	219.49		192.75	199.22	193.94
Year End	130.43	169.66	183.55	172.53	202.26	201.13	162.78	177.39	167.97