



Minnesota Department of Transportation

Memo

Office of Technical Support
Mail Stop 692
395 John Ireland Blvd.
St. Paul, MN 55155

Office Tel: (651)366-4639
Fax: (651)366-4680

Aug. 20, 2009

To: Addressees

From: Mary Lacho
Estimates Engineer

Subject: Cost Index – 2009 First Quarter

The Minnesota Highway Construction Composite Cost Index for the first quarter of 2009 is 247.42. The first quarter index was based on \$160.11 million of work considered from 48 projects. Project lettings for the ARRA (American Recovery and Reinvestment Act) of 2009 projects began with the March 13th letting. We will see a sharp increase in the number of jobs being let this year as a result.

- The average Excavation cost was \$2.61/CY, down \$0.27/CY from the first quarter of 2008. 15 projects were considered this quarter.
- The average Reinforcing Steel cost was \$0.93/lb, down \$0.86/lb from the first quarter of 2008. 17 projects were considered this quarter.
- The Structural Steel cost was \$5.00/lb. One project was considered.
- The average Structural Concrete cost was \$441.72, up \$46.95 from the first quarter of 2008. 12 projects were considered this quarter.
- The average Concrete Pavement cost was \$99.95/CY, down \$101.82/CY from the first quarter of 2008. 10 projects were considered this quarter.
- The average Plant Mixed Bituminous cost was \$46.23/ton, up \$5.59/ton from the first quarter of 2008. Overall, 2008 saw a sharp rise and then a rapid decline in oil prices. On the average, the first quarter of 2009 held steady on bituminous prices. 42 projects were considered this quarter.

First quarter, 2009 project information is compared to first quarter 2008 below.

Indicator Costs

Item	First Quarter 2008			First Quarter 2009		
	Quantity	Cost *	Unit Cost	Quantity	Cost *	Unit Cost
Excavation	366,886CY	\$1.05	\$2.88/CY	4,973,246 CY	\$13.00	\$2.61/CY
Reinforcing Steel	7,409,922 lb	\$13.29	\$1.79/lb	3,672,681 lb	\$3.42	\$0.93/lb
Structural Steel	0 lb		/lb	2,520 lb	\$0.01	\$5.00/lb
Structural Concrete	21,711CY	\$8.57	\$394.77/CY	31,333 CY	\$13.84	\$441.72/CY
Concrete Pavement	5,237 CY	\$1.06	\$201.77/CY	330,648 CY	\$33.05	\$99.95/CY
Plant-Mixed Bituminous	257,540 ton	\$10.47	\$40.64/ton	2,093,748 ton	\$96.79	\$46.23/ton
Total		\$34.44			\$160.11	

* millions of dollars

Minnesota Highway Construction Project Summary

	2008 Q1	2009 Q1
Number of Projects Awarded	45	89
Awarded Amount (\$ million)	\$127.85	\$302.50
Total Number of Bidders	209	479
Average Number of Bidders	4.6	5.4
Number of Cost Index Projects	19	48
Cost Index Amount (\$ million)	\$33.44	\$160.11
Excavation Index	143.43	130.35
Structures Index	***	298.60
Surfacing Index	261.34	249.34
Composite Cost Index (CI)	***	247.42

*** Not computed due to the absence of data for associated indicator items.

The average number of bidders per project was 4.6 for the first quarter of 2008. In comparison, the average number of first quarter bidders in 2009 was 5.4.

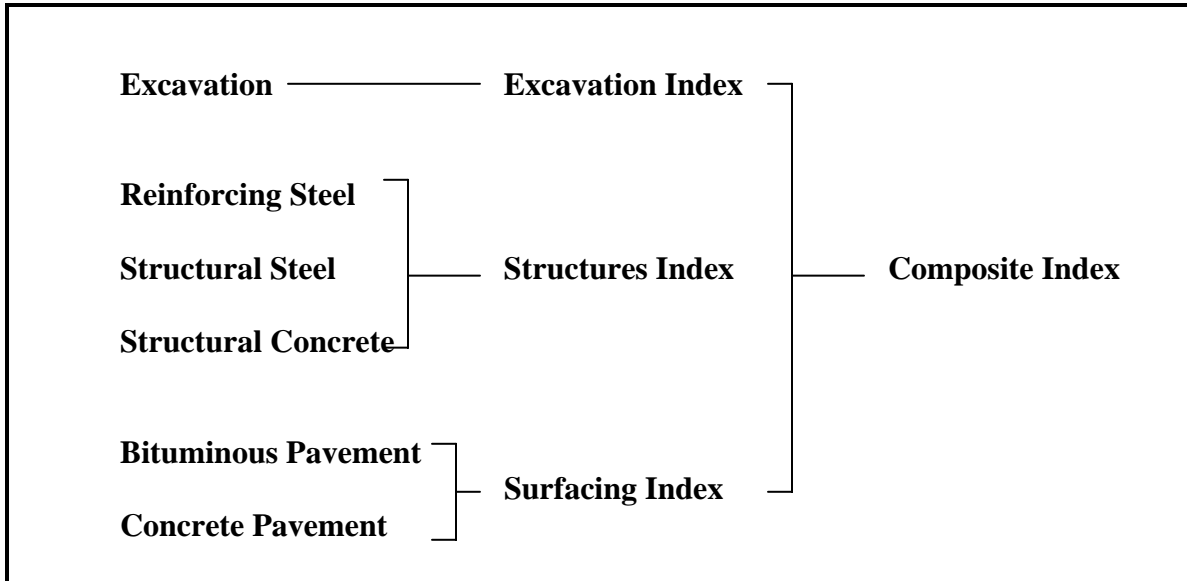
Attached is an explanation of the derivation of the Minnesota Cost index, charts of quarterly and annual Minnesota highway construction cost trends and a table and chart comparing the yearly Minnesota Composite Cost Index with the latest yearly FHWA Index.

cc: File

Minnesota Construction Cost Index

The Minnesota Construction Cost Index is an indicator of price trends for highway construction.

It is composed of six indicator items: roadway excavation, to indicate the price trends for all roadway excavation; concrete pavement and plant-mixed bituminous, to indicate the price trend for all surfacing types; and reinforcing steel, structural steel, and structural concrete, to indicate the price trend for structures.

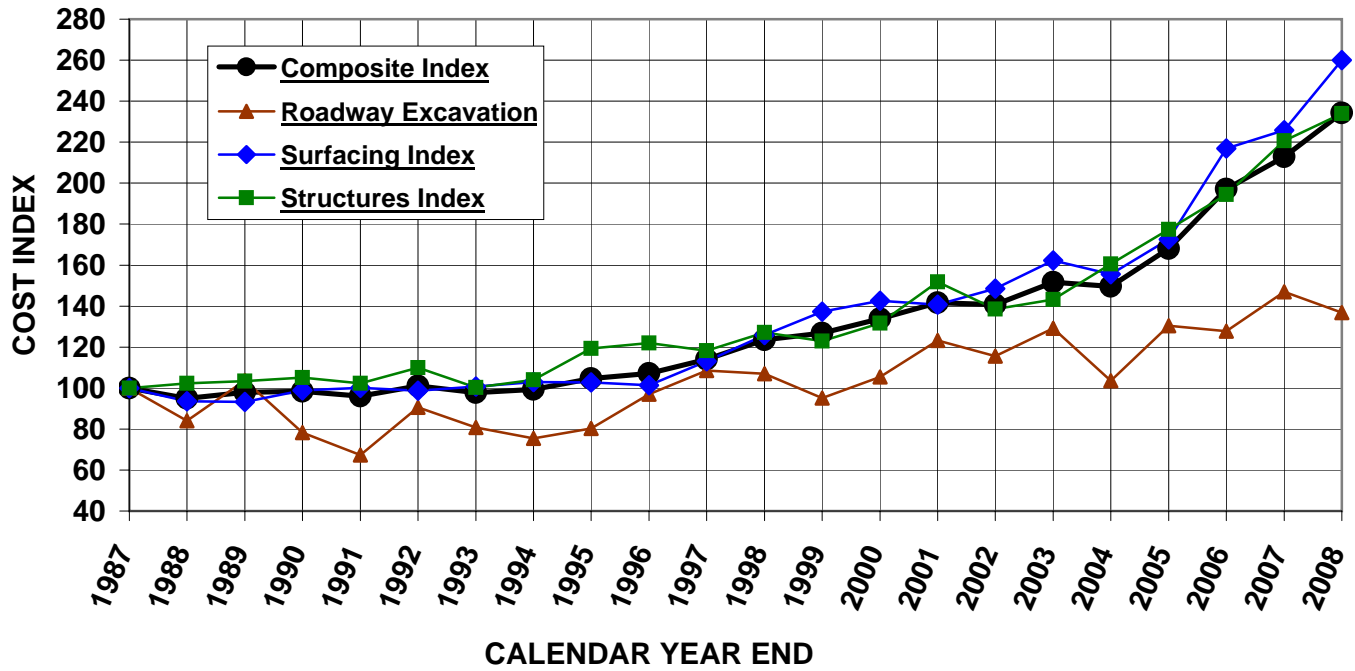


Each quarter, an average unit price is computed for each indicator item. The unit price is based upon the actual bids from projects **excluding Design Build projects**, costing more than \$100,000, and let during that quarter. These unit prices include the cost of material, labor, equipment, overhead and profit.

These unit prices along with the 1987 base unit prices and quantities are used to compute the Excavation, Surfacing, Structures and Composite Index.

Minnesota Highway Construction Cost Trends

ANNUAL PRICE TRENDS



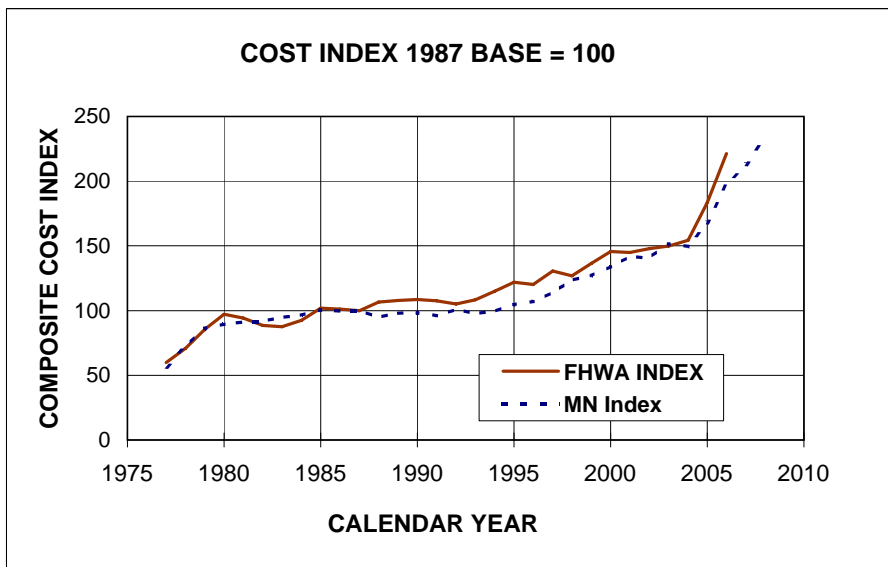
YEARLY & QUARTERLY PRICE TRENDS



NOTE: In 2007, the FHWA stopped collecting Price Trend data, and no longer provide the reports necessary to complete the comparison graphs.

HIGHWAY CONSTRUCTION COST INDEX 1987 BASE-100

<u>Year End</u>	<u>FHWA Index</u>	<u>MN Index</u>
1975		
1976		
1977	59.80	56.40
1978	70.70	72.10
1979	85.50	86.30
1980	97.20	89.60
1981	94.20	91.20
1982	88.50	91.80
1983	87.60	94.80
1984	92.60	96.40
1985	102.00	100.70
1986	101.10	99.60
1987	100.00	100.00
1988	106.60	94.90
1989	107.70	97.90
1990	108.50	98.40
1991	107.50	96.00
1992	105.10	101.00
1993	108.30	97.70
1994	115.10	99.30
1995	121.90	104.60
1996	120.20	107.10
1997	130.60	114.00
1998	126.90	123.58
1999	136.50	126.75
2000	145.60	133.91
2001	144.80	141.61
2002	147.90	140.73
2003	149.80	151.60
2004	154.40	149.61
2005	183.60	167.97
2006	221.30	197.10
2007		212.88
2008		234.22
2009		
2010		



1987 Base Year = 100
 FHWA Index includes projects > \$500,000
 Mn/DOT Index includes projects > \$100,000

PRICE TRENDS FOR FEDERAL-AID HIGHWAY CONSTRUCTION

1987 Base

Year	Common excavation		Surfacing					Structures						Composite index	
	Average contract price (cu. yd.)	Index	Portland cement concrete ²		Bituminous concrete		Surfacing index	Reinforcing steel		Structural steel		Structural concrete			Structures index
			Average contract price (sq. yd.)	Index	Average contract price (ton)	Index		Average contract price (lb.)	Index	Average contract price (lb.)	Index	Average contract price (cu. yd.)	Index		
1972	.72	29.7	6.42	43.6	9.23	37.5	39.5	.181	41.1	.342	38.6	100.17	41.6	40.7	38.6
1973	.80	33.0	7.00	47.5	10.02	40.7	42.9	.207	47.0	.372	42.0	111.81	46.4	45.4	42.5
1974	1.00	41.2	8.88	60.3	14.74	59.8	60.0	.339	76.9	.551	62.3	136.80	56.8	61.7	57.9
1975	1.03	42.5	8.88	60.3	15.13	61.4	61.0	.297	67.4	.554	62.6	138.76	57.6	60.6	58.1
1976	1.03	42.5	8.92	60.6	14.83	60.2	60.3	.258	58.5	.484	54.7	139.59	58.0	57.2	56.3
1977	1.16	47.8	9.95	67.5	15.47	62.8	64.3	.272	61.7	.520	58.8	143.51	59.6	59.7	59.8
1978	1.54	63.5	11.90	80.8	17.16	69.6	73.3	.316	71.7	.603	68.1	172.41	71.6	70.7	70.7
1979	1.62	66.8	14.02	95.2	21.21	86.1	89.0	.421	95.5	.759	85.8	211.33	87.8	88.6	85.5
1980	1.83	75.5	14.92	101.3	25.29	102.6	102.2	.483	109.6	.941	106.3	226.68	94.1	100.0	97.2
1981	1.76	72.6	14.17	96.2	25.63	104.0	101.4	.438	99.4	.790	89.3	231.64	96.2	94.9	94.2
1982	1.59	65.6	13.03	88.5	24.33	98.7	95.3	.407	92.4	.762	86.1	219.63	91.2	90.0	88.5
1983	1.74	71.8	12.69	86.1	24.27	98.5	94.4	.398	90.3	.708	80.0	213.85	88.8	86.7	87.6
1984	1.90	78.4	13.64	92.6	26.52	107.6	102.7	.409	92.8	.709	80.1	218.02	90.5	88.2	92.6
1985	2.24	92.4	14.31	97.1	28.52	115.7	109.6	.444	100.7	.796	89.9	243.60	101.2	98.1	102.0
1986	2.28	94.0	15.63	106.1	26.48	107.4	107.0	.442	100.3	.850	96.0	236.37	98.2	98.0	101.1
1987	2.42	100.0	14.80	100.0	24.65	100.0	100.0	.441	100.0	.885	100.0	240.81	100.0	100.0	100.0
1988	2.72	112.2	14.33	97.3	24.91	101.1	99.8	.494	112.1	.924	104.4	274.12	113.8	111.0	106.6
1989	2.40	99.0	15.17	103.0	24.08	97.7	99.4	.556	126.2	1.018	115.0	283.40	117.7	118.4	107.7
1990	2.38	98.1	15.91	108.0	24.52	99.5	102.3	.529	120.0	1.010	114.1	286.18	118.8	117.8	108.5
1991	2.32	95.5	16.58	112.5	25.52	103.6	106.5	.505	114.6	1.030	116.4	264.98	110.0	112.5	107.5
1992	2.20	90.8	17.80	120.8	24.66	100.1	106.9	.520	117.9	.916	103.5	259.61	107.8	108.4	105.1
1993	2.50	103.2	18.81	127.7	26.26	106.6	113.5	.467	106.0	.861	97.3	261.89	108.7	105.3	108.3
1994	2.75	113.2	20.88	141.7	27.80	112.8	122.3	.515	116.8	.847	95.7	271.94	112.9	109.0	115.1
1995	2.73	112.8	22.07	149.8	28.87	117.1	127.9	.542	122.9	.922	104.2	302.66	125.7	119.5	121.9
1996	2.92	120.6	19.64	133.3	27.50	111.6	118.7	.581	121.5	1.068	120.7	293.85	122.0	121.6	120.2
1997	2.85	117.6	23.75	161.2	23.39	119.2	133.0	.567	128.7	1.186	134.0	320.90	133.2	132.7	130.6
1998	3.01	124.3	23.65	160.5	25.00	101.4	120.8	.544	123.4	1.111	125.5	337.25	140.0	133.4	126.9
1999	2.93	120.9	23.49	159.5	32.28	130.9	140.3	.554	125.7	1.224	138.3	342.24	142.1	138.3	136.5
2000	3.01	124.1	25.30	171.7	35.15	142.6	152.2	.549	124.6	1.351	152.6	363.66	151.0	146.9	145.6
2001	3.05	125.9	28.21	191.5	34.93	141.7	158.1	.601	136.4	1.201	135.8	339.44	140.9	138.8	144.8
2002	2.94	121.2	25.86	175.5	34.14	138.5	150.7	.610	138.4	1.436	162.2	374.96	155.7	154.5	147.9
2003	3.45	142.3	23.95	162.6	32.54	132.0	142.1	.718	162.9	1.219	137.8	406.02	158.5	159.5	149.8
2004:															
First quarter	2.97	122.4	25.78	174.9	33.61	136.4	149.0	.677	153.5	1.140	128.8	370.83	153.9	147.2	144.3
Second quarter	3.32	136.9	30.60	207.7	35.54	144.2	165.0	.786	178.3	2.455	277.4	402.69	167.2	198.2	175.4
Third quarter	3.33	137.5	23.39	158.8	38.14	154.7	156.1	.828	187.9	1.135	128.2	253.35	105.2	125.4	139.8
Fourth quarter	3.58	147.6	29.69	201.6	40.60	164.7	176.8	.941	213.4	1.419	160.4	365.14	151.6	164.5	166.9
Annual	3.29	135.7	26.97	183.1	36.97	149.9	160.8	.815	184.8	1.521	171.9	331.49	137.6	154.7	154.4
2005:															
First quarter	3.59	147.9	31.49	213.8	39.77	161.3	178.6	1.057	239.8	1.492	168.6	222.72	92.5	137.8	155.9
Second quarter	4.26	175.8	42.67	289.6	43.40	176.1	213.4	1.000	226.8	1.645	185.9	549.70	228.3	216.8	209.2
Third quarter	4.99	205.9	31.58	214.4	54.09	219.4	217.8	.862	195.6	1.717	193.9	507.98	210.9	203.8	209.9
Fourth quarter	3.69	152.3	34.25	232.5	54.36	220.5	224.5	.827	187.6	1.485	167.8	512.35	212.7	196.6	201.3
Annual	3.99	164.6	33.42	226.8	45.56	184.9	198.6	.941	213.6	1.571	177.5	394.88	163.9	176.0	183.6
2006:															
First quarter	4.13	170.4	34.28	232.7	45.99	186.6	201.7	.795	180.4	1.520	171.8	397.21	164.9	169.4	182.8
Second quarter	3.56	146.9	44.04	298.9	59.03	239.5	259.0	.874	198.2	1.701	192.1	728.51	302.5	255.5	240.6
Third quarter	5.31	218.9	29.60	200.9	57.20	232.1	221.8	.928	210.6	1.985	224.2	416.93	173.1	193.0	208.7
Fourth quarter	6.43	265.4	35.56	241.4	59.59	241.8	241.6	.961	218.0	1.710	193.3	628.72	261.1	235.8	242.6
Annual	4.51	186.1	37.94	257.5	55.25	224.2	235.1	.872	197.9	1.736	196.1	574.80	238.7	220.5	221.3

MN/DOT COST INDEX

<u>Year</u>	<u>Roadway Excavation</u>	<u>Bituminous Surfacing</u>	<u>Concrete Surfacing</u>	<u>Surfacing Index</u>	<u>Reinforce. Steel</u>	<u>Structural Steel</u>	<u>Structural Concrete</u>	<u>Structures Index</u>	<u>Composite Index</u>
<u>1987</u>	100.00	100.00	100.00	100.00	100.00	100.00	100.00	100.00	100.00
<u>1988</u>									
1st Quarter	66.35	92.87	76.99	89.60	108.25	113.11	91.18	98.44	88.98
2nd Quarter	111.84	96.02	107.04	98.29	107.22	103.87	95.60	99.37	100.58
3rd Quarter	87.81	94.14	104.76	96.33	110.27	110.57	110.45	110.43	99.46
4th Quarter	89.72	103.63		103.63	115.44	107.04	94.37	100.80	100.39
Year End	84.08	95.68	85.55	93.59	109.73	109.34	97.90	102.26	94.90
<u>1989</u>									
1st Quarter	121.34	88.57	92.72	89.42	120.87	141.72	101.41	112.36	101.11
137.56	70.45	90.06	87.63	89.56	108.73	102.24	98.24	101.04	90.35
3rd Quarter	137.56	107.54	135.39	113.28	116.66	107.48	94.73	101.34	113.09
4th Quarter		91.13		91.13	138.53	121.78	146.33	140.47	111.64
Year End	103.72	92.01	94.50	93.23	115.99	111.15	97.29	103.45	97.90
<u>1990</u>									
1st Quarter	75.54	100.19	81.67	96.37	115.62	140.73	102.05	111.55	98.06
2nd Quarter	67.71	96.79	104.57	98.39	122.11	105.43	110.57	111.97	98.17
3rd Quarter	97.07	122.17	102.13	118.04	117.17	112.70	92.03	100.67	109.65
4th Quarter	66.99	106.72	148.85	115.41	118.55	108.99	133.76	126.38	111.83
Year End	78.30	100.58	97.24	98.89	117.48	112.81	99.09	105.17	98.41
<u>1991</u>									
1st Quarter	86.48	103.02	111.23	104.71	115.23	123.22	91.37	101.72	101.16
2nd Quarter	67.72	96.75	105.58	98.57	110.99	128.81	103.22	109.27	97.43
3rd Quarter	105.04				122.95		110.48	113.49	110.44
4th Quarter	47.98	81.65	111.81	87.87	106.38	84.44	80.29	86.22	81.62
Year End	67.31	97.72	109.11	100.07	111.54	121.31	93.98	102.28	96.04
<u>1992</u>									
1st Quarter	134.20	110.24	90.36	106.14	106.10	96.66	92.71	96.07	107.07
2nd Quarter	84.69	95.94	103.65	97.53	119.25	109.95	112.93	113.67	100.67
3rd Quarter	90.06	102.36	92.40	100.31	99.53	108.35	131.75	121.22	105.29
4th Quarter	99.54	105.41		105.41	105.69	91.58	116.35	109.83	106.01
Year End	90.60	99.05	97.07	98.64	106.37	105.54	112.38	109.98	100.98
<u>1993</u>									
1st Quarter	81.02	104.73	87.06	101.08	118.06	139.75	102.08	111.88	101.53
2nd Quarter	81.51	101.97	101.79	101.93	109.83	128.78	97.52	105.46	100.08
3rd Quarter		117.01		117.01	97.06		65.66	73.25	100.83
4th Quarter	73.97	94.47	84.12	92.33	119.80	112.58	104.90	109.22	94.91
Year End	80.75	101.91	96.30	100.75	108.13	127.30	90.07	100.21	97.70
<u>1994</u>									
1st Quarter	115.56	97.54	95.57	97.13	115.00	95.98	123.67	120.83	107.11
2nd Quarter	75.92	102.90	104.22	103.17	114.87		109.55	110.84	101.09
3rd Quarter	152.37	109.02	136.56	114.70	99.78	111.66	96.09	99.56	115.44
4th Quarter	65.52	110.42	103.89	109.08	109.23	98.51	98.97	100.93	100.29
Year End	75.38	102.48	104.96	102.99	105.52	110.88	101.55	103.98	99.32
<u>1995</u>									
1st Quarter	85.69	95.53	115.74	99.70	120.72	122.37	114.68	117.23	103.10
2nd Quarter	71.02	99.49		99.49	121.32	132.48	117.95	121.17	102.42
3rd Quarter	77.42	113.46	111.29	113.02	151.42		144.16	145.92	116.46
4th Quarter	92.70	107.55	109.43	107.93	121.52		111.82	114.16	107.29
Year End		99.81	113.94	102.73	121.47	126.83	116.53	119.32	104.63
<u>1996</u>									
1st Quarter	83.05	92.20	123.35	98.62	118.80	178.06	100.96	118.05	102.38
2nd Quarter	119.58	95.01	113.11	98.74	130.48		127.59	128.29	109.88
3rd Quarter	124.27	131.87	150.79	135.77	120.96		119.41	119.79	129.72
4th Quarter	95.12	124.66	113.40	122.34	141.02		144.36	143.55	123.91
Year End	97.01	97.12	117.89	101.40	120.85	178.06	106.59	121.98	107.13
<u>1997</u>									
1st Quarter	117.41	107.57	112.89	108.66	117.44	93.82	125.60	118.39	112.93
2nd Quarter	96.00	107.53	153.26	116.96	129.60	107.48	117.89	118.40	114.38
3rd Quarter	122.35	130.99		130.99	124.92	119.62	116.28	118.59	125.27
4th Quarter	127.75	134.59	0.00	134.59					132.88
Year End	108.51	109.84	125.63	113.10	122.08	99.44	122.32	118.25	114.03
<u>1998</u>									
1st Quarter	100.29	124.56	135.20	126.75	130.86		125.58	126.86	122.75
2nd Quarter	104.63	122.21	133.04	124.44	123.71		118.20	119.53	120.10
3rd Quarter	135.95	150.01	129.84	145.85	133.21		126.04	127.51	139.40
4th Quarter		155.16		155.16	122.66	146.08	110.58	119.22	140.22
Year End	106.99	124.06	132.22	125.95	127.70	146.08	121.58	127.10	123.58

MN/DOT COST INDEX
(CONTINUED)

<u>Year</u>	<u>Roadway</u> <u>Excavation</u>	<u>Bituminous</u> <u>Surfacing</u>	<u>Concrete</u> <u>Surfacing</u>	<u>Surfacing</u> <u>Index</u>	<u>Reinforce.</u> <u>Steel</u>	<u>Structural</u> <u>Steel</u>	<u>Structural</u> <u>Concrete</u>	<u>Structures</u> <u>Index</u>	<u>Composite</u> <u>Index</u>
1999									
1st Quarter	90.59	130.95	210.30	147.31	133.64		126.39	128.14	133.51
2nd Quarter	92.34	137.50	139.09	137.83	121.34		121.92	121.78	126.58
3rd Quarter	85.22	135.66		135.66	125.58	168.87	121.78	130.81	125.78
4th Quarter	182.25	143.08	202.56	155.34	132.10	107.12	183.75	160.00	160.66
Year End	95.07	135.87	142.46	137.23	124.73	114.64	124.72	122.95	126.75
2000									
1st Quarter	96.35	141.29	153.08	143.73	142.36	151.96	125.61	133.57	133.77
2nd Quarter	111.93	138.88	158.17	142.86	137.49	136.03	120.21	126.43	133.33
3rd Quarter	102.18	128.03		128.03	137.29		140.48	139.71	127.13
4th Quarter	115.61	136.47	170.73	143.53	149.27		185.41	176.66	148.21
Year End	105.38	138.87	157.19	142.65	139.49	137.59	127.59	131.71	133.91
2001									
1st Quarter	91.27	131.58	133.42	131.96	166.65		196.86	189.55	141.28
2nd Quarter	116.05	135.28	149.20	138.15	135.53	219.62	144.03	155.60	140.36
3rd Quarter	109.17	130.04	154.51	135.09	140.67	166.76	138.68	144.01	134.11
4th Quarter	157.83	160.90	185.56	165.98	149.31	86.82	158.62	144.16	158.06
Year End	123.17	137.25	153.92	140.69	142.53	171.70	149.25	151.85	141.61
2002									
1st Quarter	123.44	147.14	119.78	141.50	151.68	143.03	120.19	130.48	135.49
2nd Quarter	148.48	149.69	140.07	147.71	150.31	165.23	85.03	112.13	136.82
3rd Quarter		132.77		132.77					132.77
4th Quarter	95.26	157.12	161.93	158.12	167.64	154.74	158.85	159.88	149.61
Year End	115.64	150.27	142.16	148.60	159.74	157.32	126.43	138.49	140.73
2003									
1st Quarter	119.16	168.38	149.65	164.51	165.32	124.83	149.85	148.55	153.05
2nd Quarter	149.11	166.29	171.88	167.44	168.38	109.25	130.53	134.34	154.57
3rd Quarter	126.34	162.12	190.96	168.07	166.04		161.37	162.50	160.21
4th Quarter	142.18	144.11		144.11	162.08	139.53	213.05	189.98	159.77
Year End	129.12	163.83	156.17	162.25	166.37	116.91	143.23	143.23	151.60
2004									
1st Quarter	89.34	157.99	145.67	155.45	184.40	166.06	166.16	169.78	150.36
2nd Quarter	101.93	156.99	153.21	156.21	193.40		135.92	149.83	146.23
3rd Quarter	156.87	173.66	220.06	183.23	231.70	126.15	253.80	226.99	192.95
4th Quarter	171.37	153.88	126.70	148.28	175.45	195.43	146.69	160.98	155.53
Year End	103.48	159.35	141.15	155.60	191.19	162.96	150.02	160.50	149.61
2005									
1st Quarter	91.95	159.35	221.30	172.12	206.72	281.37	176.99	201.24	169.57
2nd Quarter	152.75	163.52	230.40	177.31	206.89	201.87	159.27	176.24	173.44
3rd Quarter	135.85	214.40	173.97	206.06	195.34	199.90	158.17	172.91	185.71
4th Quarter	131.93	211.41		211.41	219.49		192.75	199.22	193.94
Year End	130.43	169.66	183.55	172.53	202.26	201.13	162.78	177.39	167.97
2006									
1st Quarter	179.64	216.37	168.40	206.48	209.17	167.23	196.99	194.19	198.82
2nd Quarter	137.70	241.00	191.38	230.77	192.81	194.21	184.52	187.87	204.11
3rd Quarter	137.17	217.53	*	**	257.26	*	230.67	**	**
4th Quarter	95.01	228.13	*	**	247.81	*	212.00	**	**
Year End	127.80	228.04	173.91	216.88	205.99	183.53	193.74	194.39	197.10
2007									
1st Quarter	190.17	255.61	222.49	248.78	236.81	283.08	202.21	223.31	232.47
2nd Quarter	114.76	224.06	155.14	209.85	221.84	187.19	214.66	211.27	196.60
3rd Quarter	* /**	213.40	*	**	*	*	*	**	**
4th Quarter	117.03	209.36	*	**	*	*	*	**	**
Year End	147.02	232.91	198.59	225.84	233.69	262.24	204.79	220.64	212.88
2008									
1st Quarter	143.43	235.23	361.90	261.34	409.19	*	189.70	**	**
2nd Quarter	134.37	278.48	170.51	256.22	286.47	267.39	199.61	228.83	230.20
3rd Quarter	* /**	314.60	*	**	295.44	215.32	196.42	219.48	**
4th Quarter	217.71	350.82	*	**	242.71	*	187.20	**	**
Year End	136.85	282.00	175.62	260.06	349.63	239.92	195.24	233.87	234.22
2009									
1st Quarter	130.35	267.53	179.27	249.34	212.65	703.64	212.26	298.60	247.42

* No information available

**Not computed due to the absence of data for indicator item(s).