

LRRB INV 828 Local Road Material Properties and Calibration for MnPAVE

Task 5 Report Expand MnPAVE Help Files

Bruce Tanquist, Assistant Pavement Design Engineer
Minnesota Department of Transportation
May 23, 2008

Introduction

The MnPAVE help files are typical of many Windows applications with "Contents", "Index", and "Find" tabs (see Figure 1). Many of the Help topics replicate the appearance of the MnPAVE modules, with clickable buttons that jump to the corresponding help topic. The help files have been expanded and updated to encompass the new features and updates in Version 5.3. In addition, the "Index" (Figure 2) and "Find" (Figure 3) features have been expanded to make it easier for users to locate topics of interest.

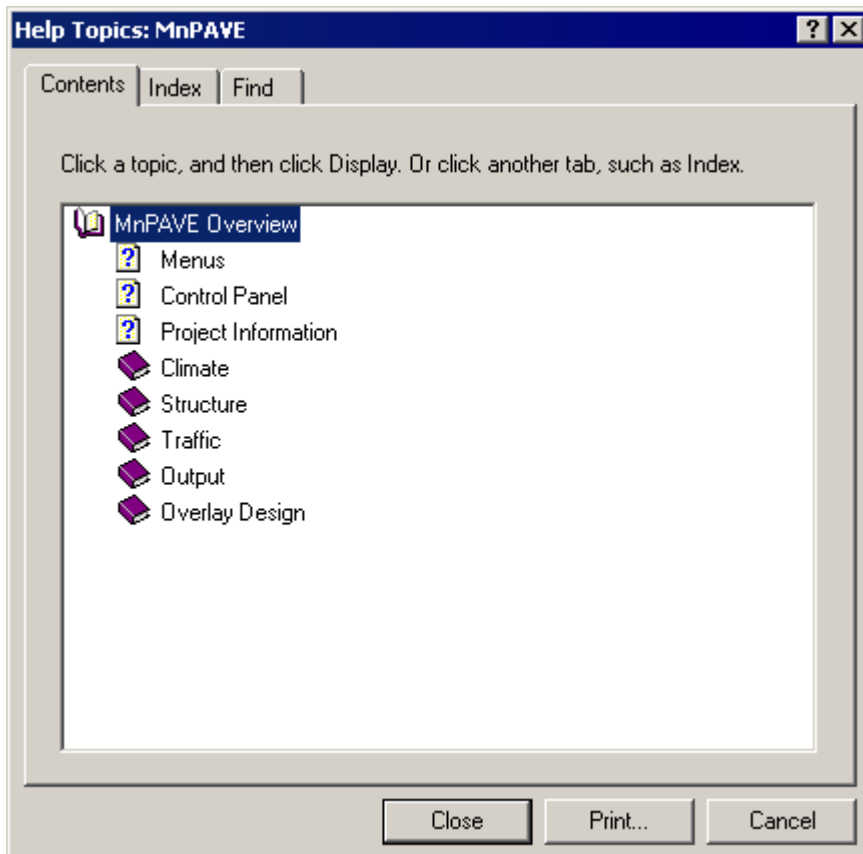


Figure 1: MnPAVE Help Window

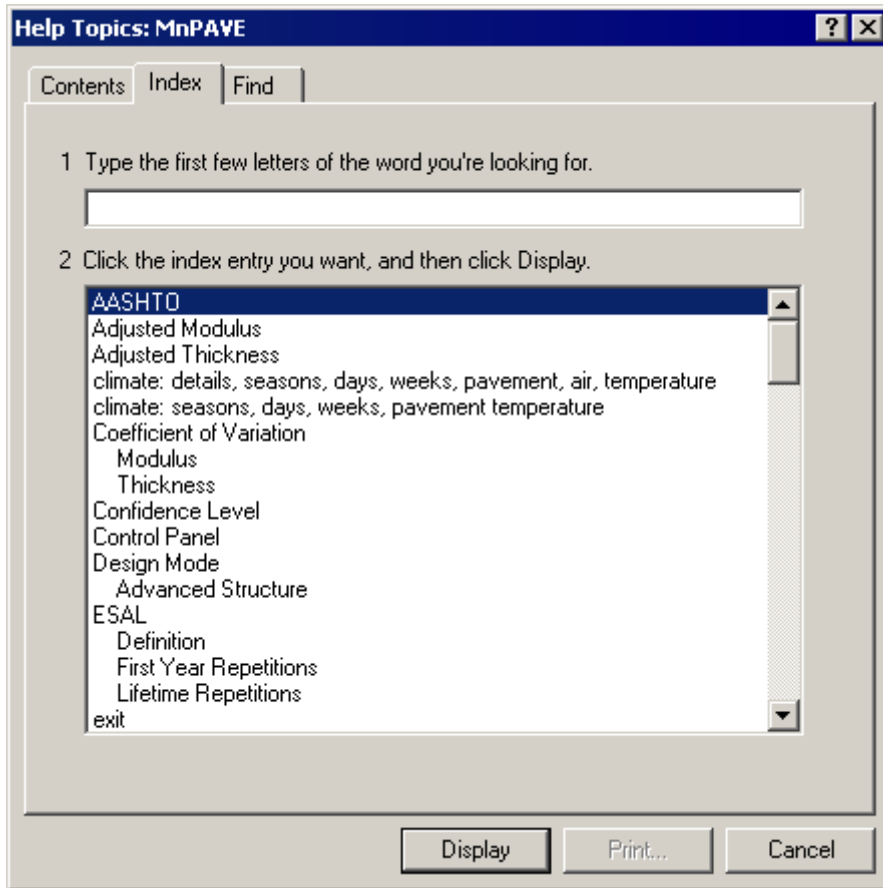
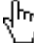


Figure 2: MnPAVE Help "Index" Feature

The "Index" feature is a way of quickly locating a main topic or subject. As text is typed into the top window, the blue highlight bar automatically jumps to topics that begin with the letters typed.

The "Find" feature is used to locate all topics containing the desired keyword. As text is entered the list of keywords is narrowed to those beginning with the letters typed. The user can then click on the desired keyword and a list of relevant topics appears below.

In topics with clickable images, links are indicated when a hand pointer  appears over a portion of the image when the mouse is moved there (see Figure 4). Clicking the left mouse button either opens a pop-up description or jumps to the relevant topic.

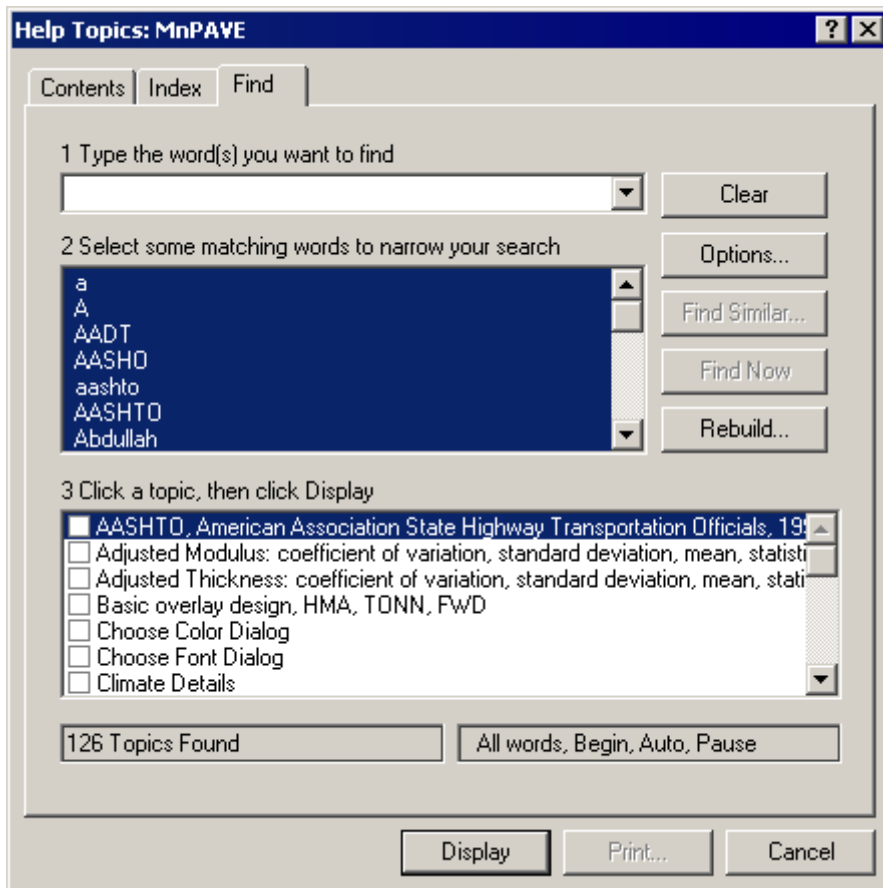


Figure 3: MnPAVE Help "Find" Feature

New topics include reliability features such as defining coefficient of variation (COV) for layer thickness and modulus, setting a "Confidence Level" for these properties, and Monte Carlo simulation to determine the reliability of the results. New methods of estimating traffic load spectra are also covered. Reference to the "Research Mode" was added for users who wish to explore the non-standard features in MnPAVE such as viewing stress and strain output, changing default values, and adjusting transfer functions.

Existing topics have been expanded to include more detailed descriptions as well as references to other sources of information.

The newly expanded Help files are intended to serve as a stand-alone manual for the user or as a supplement to the printed User's Guide.

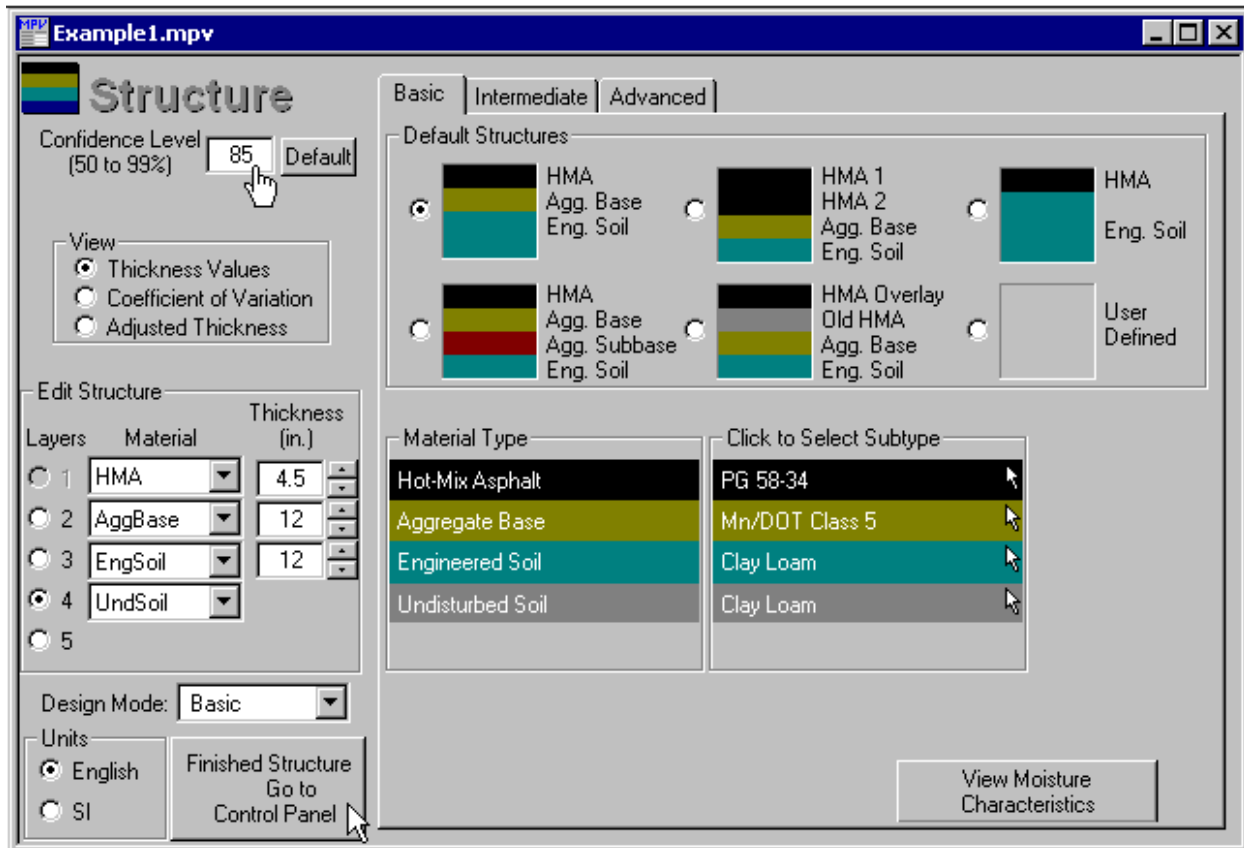


Figure 4: Basic Structure Help Image with Hand Pointer