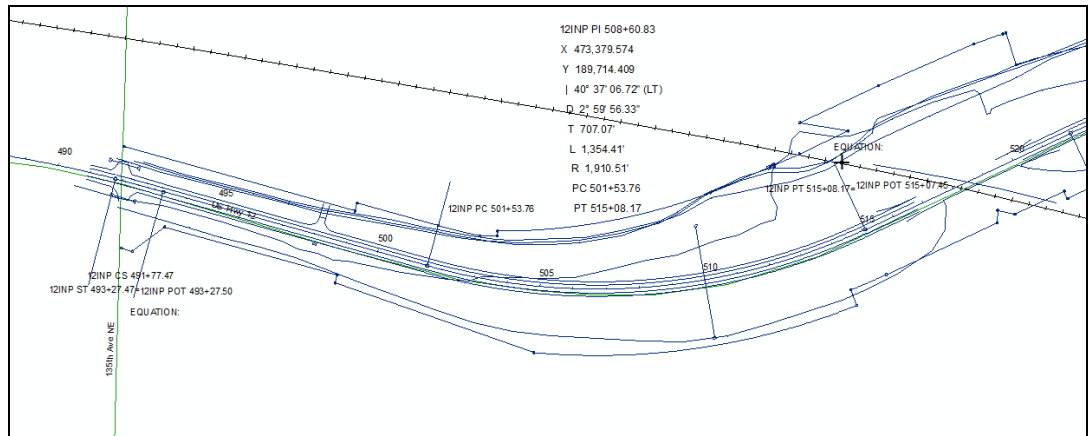


# Intelligent Compaction for Quality Assurance

BOMAG Data – TH12 Near Atwater June 28, 2005

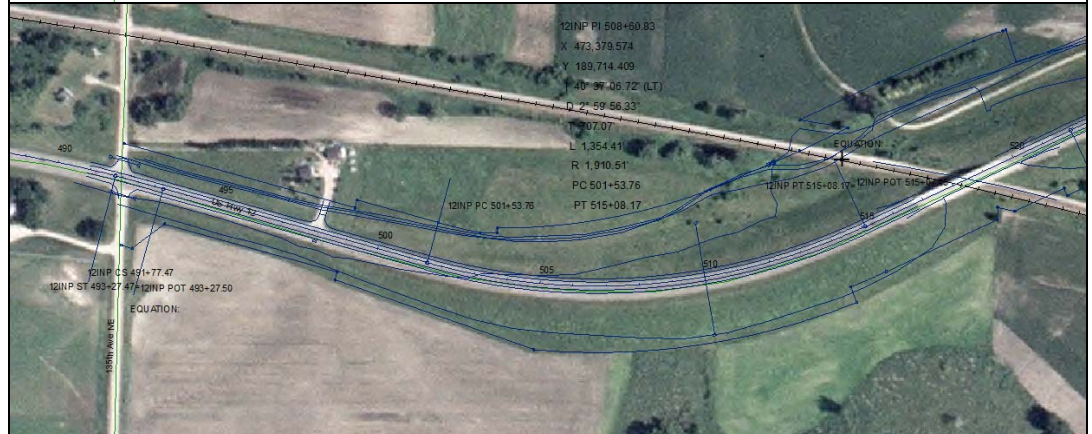
## 1. Preconstruction

- Import Microstation files into ArcMap.
- Develop coordinate-station conversions.
- Prepare database to process data.
- Obtain aerial photo from GIS archive.



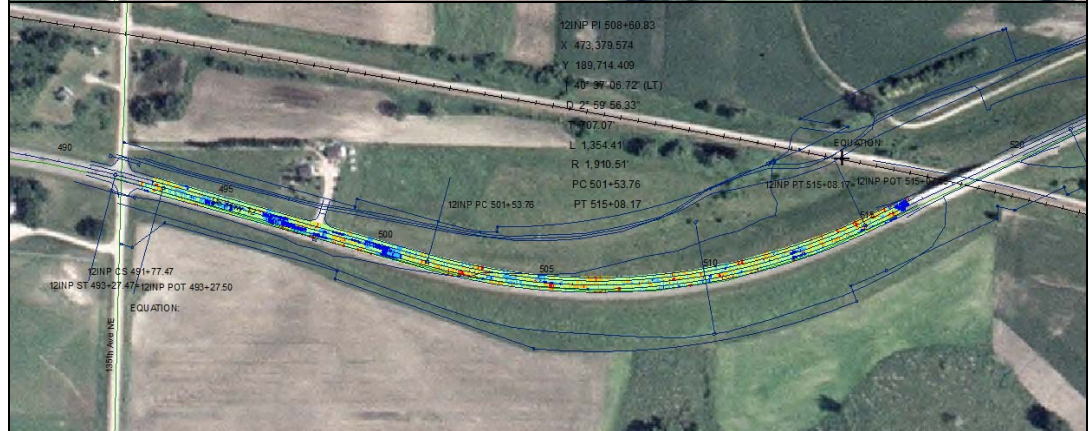
## 2. Visual Reference

- Include aerial photograph.
- Help Mn/DOT inspector identify quality assurance test locations.



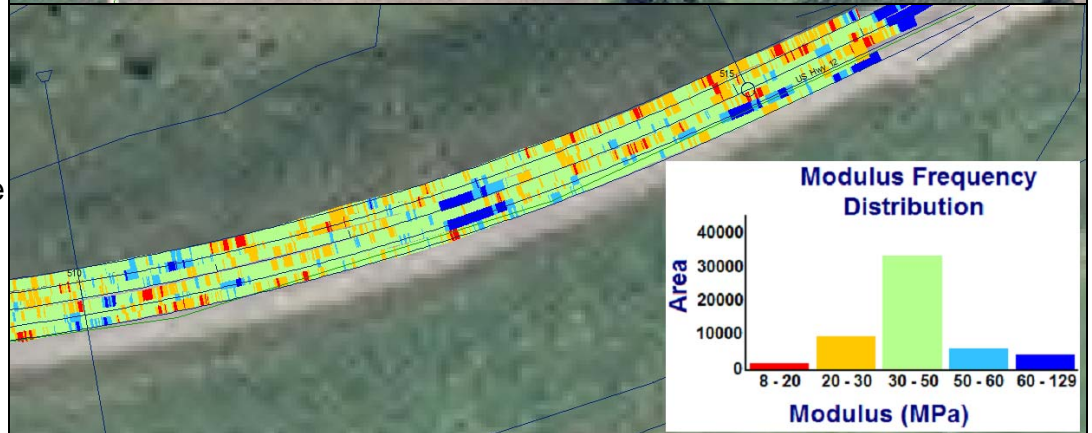
## 3. Construction Day

- Import compactor data as it becomes available.
- Superimpose compactor data on construction plans.



## 4. Inspection Points

- Use new material specifications and geostatistical methods to determine locations for quality assurance testing.
- Process quality assurance test results.



Mn/DOT ICTGI Team – November 2005

[john.siekmeier@dot.state.mn.us](mailto:john.siekmeier@dot.state.mn.us)

[ruth.roberson@state.mn.us](mailto:ruth.roberson@state.mn.us)

[bruce.tanquist@dot.state.mn.us](mailto:bruce.tanquist@dot.state.mn.us)