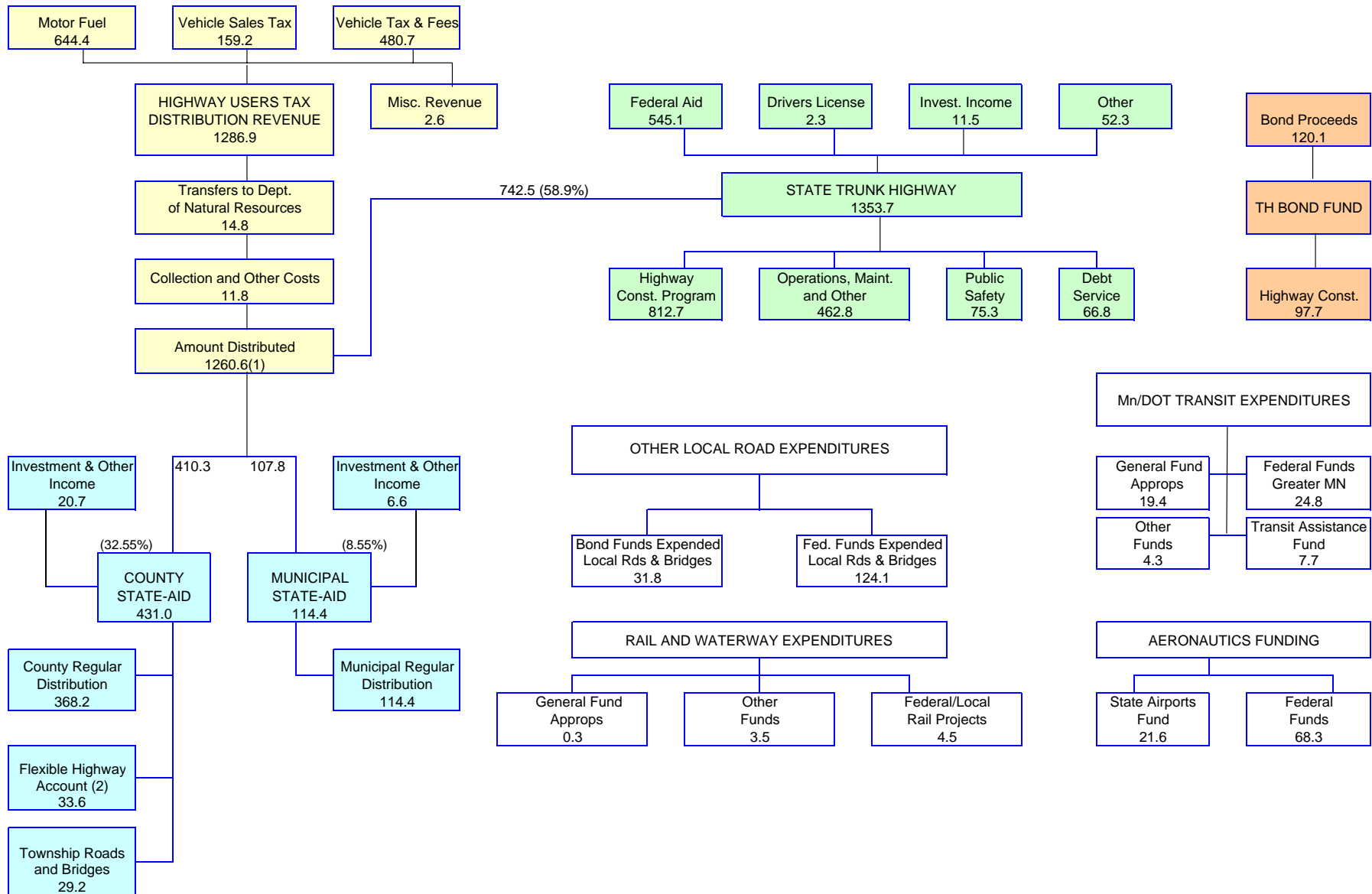


**MINNESOTA STATE GOVERNMENT
REVENUE AND EXPENDITURES FOR TRANSPORTATION PURPOSES
ALL SOURCES OF FUNDS (Dollars in Millions)
FY 2007 Final**



(1) - Net Revenues \$1260.3 plus \$.3 from Fund Balance
 (2) - Trunk Highway = \$7.4, County Turnback = \$24.8, Municipal Turnback = \$1.5.