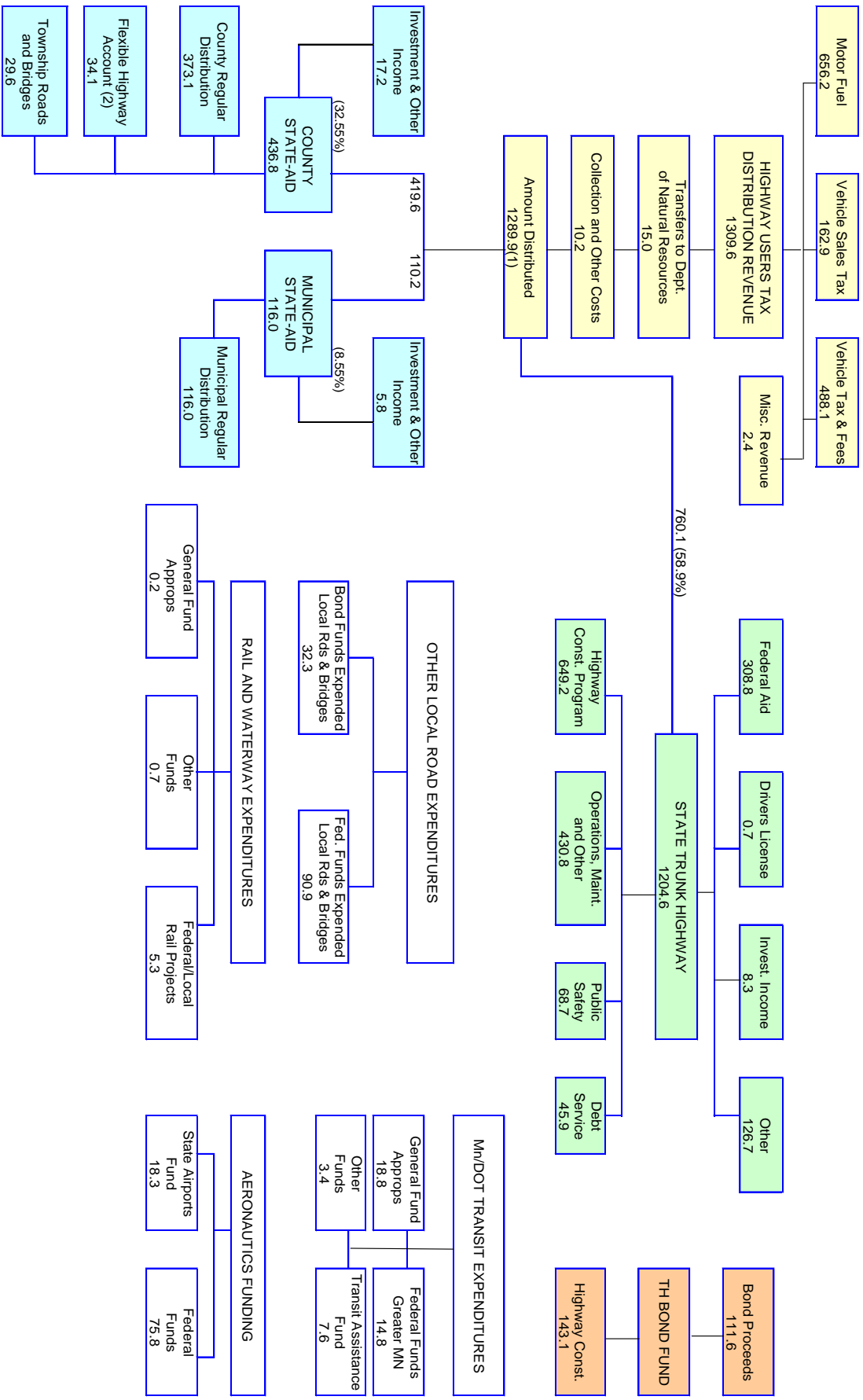


MINNESOTA STATE GOVERNMENT
 REVENUE AND EXPENDITURES FOR TRANSPORTATION PURPOSES
 ALL SOURCES OF FUNDS (Dollars in Millions)
 FY 2006 Final



(1) - Net Revenues \$1284.4 plus \$5.5 from Fund Balance
 (2) - Trunk Highway = \$10.4, County Turnback = \$18.0, Municipal Turnback = \$5.7.