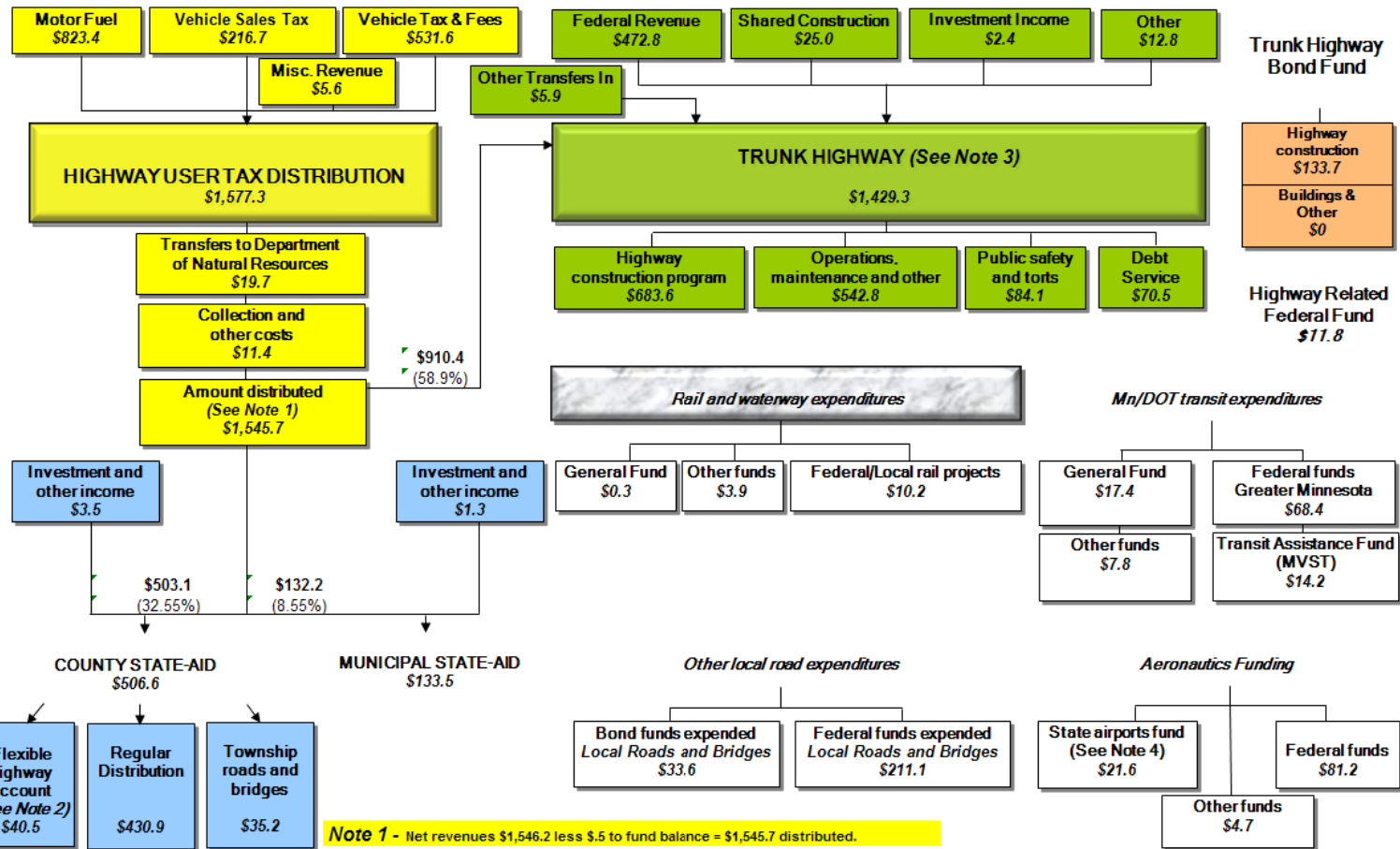


STATE OF MINNESOTA
REVENUE AND EXPENDITURES FOR TRANSPORTATION PURPOSES
ALL SOURCES OF FUNDS (\$ MILLIONS)
 FY 2010 FINAL (BUDGETARY BASIS)



Note 1 - Net revenues \$1,546.2 less \$5.5 to fund balance = \$1,545.7 distributed.

Note 2 - County turnback = \$40.5.

Note 3 - Net revenues \$1,429.3 less \$48.3 to fund balance = \$1,381.0 expend. & transfers out.

Note 4 - Excludes hangar loan activity

Prepared by Mn/DOT Office of Financial Management
 Financial Reporting
 January 6, 2011